

Cadet Name: \_\_\_\_\_

Date: \_\_\_\_\_

1. (U1C1L1:Q1) If someone asked you about what you expect to get out of Army JROTC, which one of the following responses would you use to best inform them about the mission and purpose of JROTC?

A) "We expect to learn military skills as future soldiers, sailors, airmen, and Marines for our armed forces. That's the purpose of JROTC."

B) "We expect to develop the skills and participate in a variety of experiences and leadership situations to help us become better citizens. That's the mission of JROTC."

C) "We expect to participate in an alternative method of normal classroom learning. That's the purpose of JROTC."

D) "We expect to save our future employers training dollars by learning leadership skills in JROTC. That's the mission of JROTC."

2. (U1C1L1:Q2) A friend of yours tells you that citizenship can't be developed in a classroom. She believes that people learn citizenship skills from their families. Which of the following answers would you use to best demonstrate your citizenship skills, and to best explain how Army JROTC develops citizenship?

A) "Army JROTC does teach citizenship skills with classroom discussions and public speaking opportunities."

B) "Families can set the foundation for good citizenship, but Army JROTC helps promote it further through projects outside of the home."

C) "I know what you mean, that's why we have study groups that cover a variety of academic subjects both in and out of the classroom."

D) "Army JROTC teaches us how we could be good citizens by joining the Army or one of the other armed services."

3. (U1C1L1:Q3) Leadership Theory and Application lessons teach Cadets the BE, KNOW, and DO of leadership. A friend of yours said that she understood the BE and DO parts, but wasn't sure about the KNOW. Which of the following would be a good example to illustrate what KNOW means?

A) A Cadet receives an award.

B) A Cadet demonstrates a performance task.

C) A Cadet gets promoted to a leadership position.

D) A Cadet motivates a team to accomplish a mission.

4. (U1C1L1:Q4) The JROTC Instructor asked your friend what he knew about Army JROTC. He

replied that he had heard both good and bad things about it. He also said that he thought it would be a good place to learn leadership, but that he was sure he wasn't going to like some of the challenges. The instructor smiled because she liked his answer, then she thanked your friend for his candor. Your friend didn't know what that meant, so the instructor asked you if you knew.

What should you say?

- A) Candor means fairness, openness, and frankness.
- B) Candor means obligation, devotion, and duty.
- C) Candor means poise, certainty, and self-belief.
- D) Candor is integrity, moral fiber, and disposition.

5. (U1C1L1:G1) What is the mission of Army JROTC?

- A) To train young men and women in Army tactics.
- B) To help students graduate from high school.
- C) To increase enlistment in the Armed Forces.
- D) To motivate young people to be better citizens.

6. (U1C1L1:G2) In your LET texts, what will Leadership Theory and Application teach you?

- A) How to influence others while you are leading them.
- B) How to be a leader.
- C) What you do while you are leading.
- D) All of the above

7. (U1C1L1:V1) Choose the word that best matches the definition below.

"A program that teaches high school students the values of good citizenship while giving them an introduction to the US Army."

- A) Cadet
- B) mission
- C) challenges
- D) JROTC

8. (U1C1L1:V2) Choose the word that best matches the definition below.

"A specific job given to a person or group of persons to accomplish."

- A) Cadet

- B) mission
- C) unique
- D) JROTC

9. (U1C1L1:V3) Choose the word that best matches the definition below.

"A high school student enrolled in the leadership and citizenship activities through JROTC."

- A) Cadet
- B) mission
- C) unique
- D) motivate

10. (U1C1L1:V4) Choose the word that best matches the definition below.

"Being the only one of its kind."

- A) Cadet
- B) opportunities
- C) unique
- D) JROTC

11. (U1C1L1:V5) Choose the word that best matches the definition below.

"Provide a need or a purpose that causes a person to want to do something."

- A) challenges
- B) opportunities
- C) motivate
- D) JROTC

12. (U1C1L1:V6) Choose the word that best matches the definition below.

"To arouse the interest of one's actions or efforts; to stimulate; the quality of requiring full use of one's abilities, energy, and resources; to demand identification from someone before they are allowed to enter or pass."

- A) challenges
- B) opportunities
- C) motivate
- D) mission

13. (U1C1L1:V7) Choose the word that best matches the definition below.

"Favorable or advantageous circumstances or a combination of circumstances."

- A) challenges
- B) opportunities
- C) motivate
- D) unique

14. (U1C1L2:Q1) Arrange the following sentences in order to best explain the evolution of Army JROTC into what it is today.

(A.) Captain Alden Partridge founded the American Literary, Scientific, and Military Academy, now known as Norwich University, in Norwich, Vermont in 1819.

(B.) The ancient Greeks, the Romans, the Japanese, and feudal Europeans all had their own schools for military education.

(C.) Army JROTC is active in more than 1,500 high schools in all 50 states, the District of Columbia, Asia, Europe, and the Caribbean.

(D.) Captain Partridge's idea of combining drill practice and physical conditioning, language training, mathematics, law, and military history was so successful that it quickly spread to other schools.

(E.) Congress passed the National Defense Act and created ROTC and JROTC "To motivate young people to be better citizens."

- A) B, A, D, E, C
- B) B, E, A, D, C
- C) B, D, A, C, E
- D) B, E, D, A, C

15. (U1C1L2:Q2) Teamwork is the ability to work well with others towards a common goal. It is one of the hallmarks of Army JROTC. If you were describing some of the activities you do in JROTC to develop teamwork, what would you most likely be talking about?

- A) Classes that teach the dangers of substance abuse
- B) Drill and ceremonies, first aid, and map reading
- C) Goal-setting and financial planning
- D) The importance of diet and exercise in maintaining good health

16. (U1C1L2:Q3) You are the leader of a team of Cadets that successfully accomplished a number of tasks. Initially, your team consisted of new Cadets from many different backgrounds. They did not work well together and you had to constantly settle disputes. Your leadership skills helped guide them to complete the tasks and build a strong, cohesive team.

Because of your team's success, you were commended by your JROTC Instructor for your specific skill in:

- A) Public Speaking
- B) Conflict Resolution
- C) Cultural Diversity
- D) Good Citizenship

17. (U1C1L2:Q4) For a class assignment, you and the other Cadets were told to write down what you thought were the goals of JROTC on a 3X5 card. After everyone had written down 4-5 goals, you were told to exchange 3X5 cards with other Cadets. The instructor asked if anyone if they thought any of the goals were wrong.

On the card you now have, which of the following goals would you recommend not using as a goal for JROTC?

- A) Cadets will achieve positive self-esteem and the ability to work effectively in a culturally diverse society.
- B) Cadets will develop the ability to think logically and communicate effectively.
- C) Cadets will prepare for careers in the military services.
- D) Cadets will acquire knowledge about the dangers of substance abuse, and mental management, including goal setting and positive self-talk.

18. (U1C1L2:G1) When was JROTC established by Congress?

- A) 1961
- B) 1916
- C) 1776
- D) 1830

19. (U1C1L2:G2) Name the congressional act that launched the JROTC program.

- A) The Civil Rights Act
- B) The No Child Left Behind Act
- C) The National Fitness Act
- D) The National Defense Act of 1916

20. (U1C1L2:G3) Where in the U.S. was the first JROTC program established as the American

Literary, Scientific, and Military Academy?

- A) Connecticut
- B) Virginia
- C) Sacramento, California
- D) Norwich, Vermont

21. (U1C1L2:G4) One of the goals of the JROTC curriculum is to encourage students to graduate from \_\_\_\_\_.

- A) College
- B) High School
- C) Basic Training
- D) Two-Year Colleges

22. (U1C1L2:G5) T or F: One of the LET goals for Cadets is to get Cadets to graduate from high school.

- A) True
- B) False

23. (U1C1L2:G6) T or F: One of the LET goals is to get Cadets to join the military service.

- A) True
- B) False

24. (U1C1L2:G7) T or F: One of the LET goals is to teach Cadets conflict resolution skills.

- A) True
- B) False

25. (U1C1L2:G8) JROTC was established in the year \_\_\_\_\_ by an act of Congress.

- A) 1942
- B) 1902
- C) 1916
- D) 1776

26. (U1C1L2:G9) The academy in Norwich, Vermont, which had the first JROTC program was the \_\_\_\_\_ Academy.

- A) American Literary, Scientific, and Military
- B) Military
- C) West Point

D) American Military

27. (U1C1L2:G10) T or F: The mission of JROTC is to train citizen soldiers for the future of the U.S.

- A) True
- B) False

28. (U1C1L2:V1) Choose the word that best completes the sentence below.

As a leader, Bob was able to settle disputes in a cohesive manner using his \_\_\_\_\_ skills.

- A) leadership
- B) conflict resolution
- C) National Defense Act
- D) culturally diverse

29. (U1C1L2:V2) Choose the word that best completes the sentence below.

JROTC prepares high school students for responsible \_\_\_\_\_ roles while making them aware of the benefits of citizenship.

- A) leadership
- B) conflict resolution
- C) National Defense Act
- D) culturally diverse

30. (U1C1L2:V3) Choose the word that best completes the sentence below.

The local high school has many students who are from all over the world, making the school \_\_\_\_\_.

- A) leadership
- B) conflict resolution
- C) National Defense Act
- D) culturally diverse

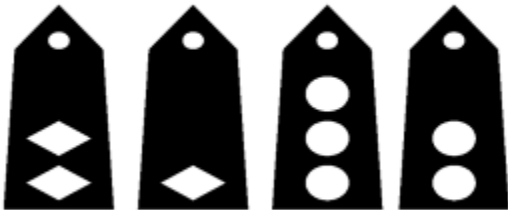
31. (U1C1L2:V4) Choose the word that best completes the sentence below.

The US Army Junior Reserve Officers' Training Corps (JROTC) formally came into being with the passage of the \_\_\_\_\_ in 1916.

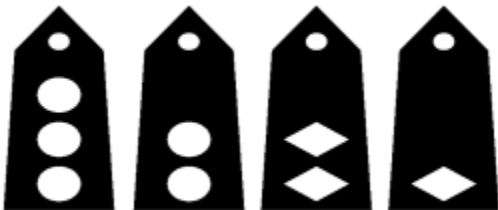
- A) leadership
- B) conflict resolution
- C) National Defense Act
- D) culturally diverse

32. (U1C1L3:Q1) From highest to lowest, what is the correct order of Cadet officer ranks?

A)



B)

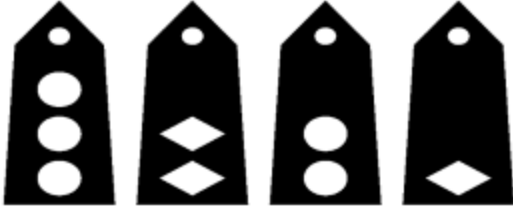


C)



D)





33. (U1C1L3:Q2) If you met a Cadet with this rank, how should you greet her?



- A) "Good morning, Cadet Staff Sergeant."
- B) "Good morning, Cadet Sergeant."
- C) "Good morning, Cadet Master Sergeant."
- D) "Good morning, Ma'am."

34. (U1C1L3:Q3) As a new Cadet, you are being introduced to your chain of command. The person wearing this rank is most likely your \_\_\_\_\_.



- A) Battalion Commander
- B) Company Commander
- C) Platoon Leader
- D) Squad Leader

35. (U1C1L3:Q4) Your job is to make sure the Battalion Commander's guidance is understood and acted on by the Company Commanders and the Battalion Staff. You also manage the staff so that all of the different staff sections coordinate and work with each other to advise the Commander, plan projects and activities, perform administrative duties, maintain security, and issue property.

What is your position in the Battalion?

- A) Adjutant (S-1)
- B) Battalion Coordinating Staff Officer
- C) Battalion Command Sergeant Major
- D) Executive Officer (XO)

36. (U1C1L3:Q5) You have just been appointed as the new Commander of your JROTC Company. During your assumption of command, you found that your company's personnel records and training schedules are a mess.

You know that your battalion has the correct records and schedules, so you request copies of them from your Battalion \_\_\_\_\_ and \_\_\_\_\_.

- A) S-1 (Adjutant); S-2 (Information & Security)
- B) S-1 (Adjutant); S-3 (Operations)
- C) S-2 (Information & Security); S-3 (Operations)
- D) S-3 (Operations); S-4 (Logistics)

37. (U1C1L3:G1) T or F: In the pyramid of authority in JROTC, from the top to the bottom of the pyramid is a chain of command.

- A) True
- B) False

38. (U1C1L3:G2) Define "chain of command."

- A) Number of immediate subordinates under one's control.
- B) The succession of leaders through which authority passes down the ranks.
- C) The pyramid of authority.
- D) The rank or grade held by a Cadet JROTC member.

39. (U1C1L3:G3) What is the purpose of using the chain of command?

- A) To prevent lawsuits against enlisted personnel.
- B) To limit the number of individuals in one's span of control.
- C) To ensure the unity of a command.
- D) It ensures that all members are working together as a team to accomplish their individual tasks and those of the unit.

40. (U1C1L3:G4) Define "span of control."

- A) The number of immediate subordinates, one commander, or leader can effectively control, supervise, or direct.
- B) Synonymous with chain of command.
- C) The duties of the S-2, who is responsible for staff matters pertaining to security.
- D) The number of supervisors one answers to in any given day.

41. (U1C1L3:G74) Name the three levels of authority in the pyramid of authority.

- A) Unity of command, Span of control, Chain of command
- B) Enlisted, Warrant, and Officer ranks
- C) Basic, Intermediate, and Top
- D) Subordinates, Self, and Supervisors

42. (U1C1L3:G5) The two terms used by the military to classify soldiers are \_\_\_\_\_ and \_\_\_\_\_.

- A) Rank and grade
- B) Officer and enlisted
- C) Male and female
- D) Retired and active duty

43. (U1C1L3:G6) Explain the difference between the military terms "ranks" and "grade."

A) Rank is a title indicating a Soldier's position and responsibility, while grade is a letter/number combination denoting a Soldier's pay rate.

B) Rank applies only to enlisted Soldiers, while grade applies to officers.

C) Rank is from O-2 to O-6, while grade is from PFC to E-8.

D) Rank has to do with a drill movement, while grade refers to LET-level.

44. (U1C1L3:G7) What category of Soldier holds the grades of E-1 through E-9?

A) Retired Soldiers

B) Officers

C) Army Reserve Soldiers

D) Enlisted Soldiers

45. (U1C1L3:G8) What category of Soldier holds the grades of W-1 through W-5?

A) Technicians

B) General officers

C) Warrant officers

D) Enlisted officers

46. (U1C1L3:G9) What category of Soldier holds the grades of O-1 through O-6?

A) Officers over the age of thirty.

B) Master sergeants and top sergeants.

C) Retirees

D) Company and field grade officers

47. (U1C1L3:G10) What category of Soldier holds the grades of O-7 through O-11?

A) Warrant officers

B) Only those who work in the Pentagon

C) General officers

D) Army personnel only

48. (U1C1L3:G11) T or F: Specialists are comparable in rank to corporals, but they are commonly referred to as technicians.

A) True

B) False

49. (U1C1L3:G12) T or F: Technicians, also called specialists, are largely responsible for

commanding other enlisted personnel.

- A) True
- B) False

50. (U1C1L3:G13) A company consists of a headquarters section and at least two \_\_\_\_\_.

- A) Battalions
- B) Teams
- C) Squads
- D) Platoons

51. (U1C1L3:G14) T or F: Noncommissioned officers are not in supervisory positions over personnel in lower grades.

- A) True
- B) False

52. (U1C1L3:G15) T or F: Commissioned officers are appointed by the President and confirmed by the Senate.

- A) True
- B) False

53. (U1C1L3:G16) T or F: A JROTC warrant officer denotes a JROTC technician.

- A) True
- B) False

54. (U1C1L3:G17) To whom does the Cadet Battalion Commander report?

- A) The First Sergeant of the command.
- B) Up and down his or her chain of command.
- C) To the Army Instructors and to the principal.
- D) No one. Others report to the Cadet Battalion Commander.

55. (U1C1L3:G18) Each \_\_\_\_\_ is composed of a headquarters section and at least two or three squads.

- A) Squad
- B) Team
- C) Battalion
- D) Platoon

56. (U1C1L3:G19) What is the rank of a JROTC Battalion Commander?

- A) Cadet Lieutenant
- B) Cadet Lieutenant Colonel
- C) Cadet Captain
- D) Cadet Major

57. (U1C1L3:G20) What is the rank of a JROTC Company Commander?

- A) Cadet Major
- B) Cadet Captain
- C) Cadet Lieutenant Colonel
- D) Cadet First Sergeant

58. (U1C1L3:G21) What is the rank of a JROTC Battalion Executive Officer?

- A) Cadet Captain
- B) Cadet Colonel
- C) Cadet Major
- D) Cadet General

59. (U1C1L3:G22) Who in a unit is primarily responsible for staff matters pertaining to security?

- A) The S-3, also called the Training Officer.
- B) The JROTC Senior Army Instructor.
- C) The S-2, also called the Battalion Intelligence or Security Officer.
- D) The Information Officer

60. (U1C1L3:G23) What are the primary responsibilities of the Battalion S-3?

- A) To answer media questions.
- B) To assist the Battalion Commander in the preparation, conduct, and supervision of all Cadet battalion training activities.
- C) To track JROTC inventory of property.
- D) To advise the staff on the conditions of all weapons.

61. (U1C1L3:G24) Whose job is it to act as the contact between the corps of cadets and all news media and student publications?

- A) The Battalion Ordinance Officer
- B) The Battalion Public Affairs Officer, also called the Information Officer
- C) The Battalion Supply Officer

D) The Battalion Logistics Officer

62. (U1C1L3:G25) The \_\_\_\_\_ officer advises the S-4, battalion commander, and instructor staff on the condition of all weapons.

- A) Battalion Ordnance Officer
- B) Battalion Information Officer
- C) Battalion Logistics Officer
- D) Battalion Communications Officer

63. (U1C1L3:G26) Who is responsible for setting up and maintaining all signal or public address/projection/sound equipment issued to the Cadet battalion?

- A) The Battalion Information Officer
- B) The Battalion Communications Officer, also called the Signal Officer
- C) The Battalion Logistics Officer
- D) The Battalion Supply Officer

64. (U1C1L3:G27) Who is responsible for the maintenance, security, record keeping, issue, and turn-in of all U.S. government property (except ordnance) for the battalion?

- A) The Battalion Signal Officer
- B) The Battalion Information Officer
- C) The Battalion Logistics or Supply Officer, also known as the S-4
- D) The Battalion Commander

65. (U1C1L3:G28) What are the responsibilities of a team leader?

- A) A team leader is responsible for publicizing all the accomplishments of the team.
- B) A team leader is responsible for monitoring team spirit and team attendance at school events.
- C) A team leader is responsible for the formation, appearance, training, and discipline of their team members and must be ready to assume control of the squad in the absence of the squad leader.
- D) All of the above

66. (U1C1L3:G29) Name the duties and responsibilities of a team member.

- A) Properly wear the uniform.
- B) Take care of equipment.
- C) Be on time for official formations.
- D) All of the above

67. (U1C1L3:G30) Name the three elements in the Pyramid of Authority.

- A) Positional authority, expert authority, peer authority.
- B) Authority of expertise, authority of association, positional authority.
- C) Unity of command, span of control, and chain of custody.
- D) Unity of command, span of control, and chain of command

68. (U1C1L3:G31) The number of immediate subordinates, one commander, or leader can effectively control, supervise, or direct describes the leader's \_\_\_\_\_.

- A) Unity of command
- B) Span of control
- C) Chain of command
- D) Pyramid of authority

69. (U1C1L3:G32) A \_\_\_\_\_ consists of a headquarters section and at least two platoons.

- A) Company
- B) Team
- C) Battalion
- D) Brigade

70. (U1C1L3:G33) Commissioned officers are appointed by the \_\_\_\_\_ and confirmed by the Senate.

- A) Congress
- B) President
- C) Senate
- D) Voting populace

71. (U1C1L3:G34) The Battalion Intelligence or Security Officer, also called the \_\_\_\_\_, is responsible for staff matters pertaining to security.

- A) S-2
- B) S-5
- C) S-1
- D) S-3

72. (U1C1L3:G35) The person responsible for the preparation, conduct, and supervision of all Cadet battalion training activities is the \_\_\_\_\_.

- A) S-5, also called the Special Projects Officer.
- B) S-4, also called the Logistics Officer
- C) S-3, also called the Battalion Operations and Training officer



D) S-1, also called the Adjutant

73. (U1C1L3:G36) The contact person between the corps of cadets and all news media and student publications is the \_\_\_\_\_.

- A) Senior Army Instructor
- B) Battalion Public Affairs Officer, also called the Information Officer
- C) Battalion Executive Officer, also called the X-O
- D) Special Projects Officer, also called the S-5

74. (U1C1L3:G37) Name three Battalion Special Staff positions.

- A) The Battalion Communications (or Signal) Officer
- B) The Battalion Ordinance Officer
- C) The Battalion Public Affairs (or Information) Officer
- D) All of the above

75. (U1C1L3:G38) Another name for the Battalion Personnel Staff Officer is the \_\_\_\_\_.

- A) Battalion Ordinance Officer
- B) Signal Officer
- C) Special Projects Officer
- D) Battalion Command Sergeant Major

76. (U1C1L3:G39) What Battalion Officer advises the staff on the condition of all weapons?

- A) The Battalion Special Projects Officer
- B) The Battalion Ordnance Officer
- C) The Battalion Personnel Staff Officer
- D) The Battalion Communications Officer

77. (U1C1L3:G40) What are the duties of the Battalion Communications Officer, also called the Signal Officer?

- A) Setting up and maintaining all signal or public address, projection, and sound equipment issued to the Cadet battalion.
- B) Tracking, issuing, and maintenance on all weapons.
- C) Speaking with the public media and serving as liaison between the media and school personnel.
- D) Keeping track of all U.S. property (except ordinance) for a battalion.

78. (U1C1L3:G41) What is the role of the Battalion Logistics or Supply Officer, also called the S-4?

- A) Keeping track of all U.S. government property (except ordnance) for the battalion.
- B) Keeping track of all ordnance for the battalion.
- C) Setting up and maintaining public address, projection, and sound equipment for a battalion.
- D) To serve as the contact person between the corps of cadets and all news media and student publications.

79. (U1C1L3:G42) Who is responsible for the formation, appearance, training, and discipline of their team members?

- A) The Battalion XO
- B) The platoon leaders
- C) The squad leaders
- D) The team leaders

80. (U1C1L3:G43) T or F: Two duties of a team leader are to set the example at all times and to know the number, names and personal information on all assigned personnel.

- A) True
- B) False

81. (U1C1L3:G44) Who is the company commander's primary assistant?

- A) The Senior Army Instructor
- B) The company executive officer (or XO)
- C) The Squad leader
- D) The battalion command sergeant major

82. (U1C1L3:G45) Who assumes command in the absence of the company commander?

- A) The battalion command sergeant major
- B) The platoon leader
- C) The Special Projects Officer (or S-5)
- D) The company executive officer (or XO)

83. (U1C1L3:G46) What is the principal Cadet enlisted assistant to the battalion commander?

- A) The battalion command sergeant major
- B) The platoon leader
- C) The battalion adjutant (or S-1)
- D) The Cadet XO

84. (U1C1L3:G47) Who is directly responsible for a platoon of Cadets?

- A) The command or sergeant major
- B) The executive officer (or XO)
- C) A platoon leader (or Cadet 2<sup>nd</sup> Lieutenant)
- D) The battalion adjutant

85. (U1C1L3:G48) What is the role of the S-5?

- A) To plan and coordinate special projects as outlined by the Cadet battalion commander, the Cadet battalion XO, or the instructor staff.
- B) To train the operations and training officer.
- C) To keep the battalion logistics officer informed.
- D) To maintain weapons.

86. (U1C1L3:G49) Who is the administrative assistant to the battalion commander?

- A) The battalion Operations or Training Officer (or S-3)
- B) The battalion Special Projects Officer (or S-5)
- C) The battalion Ordinance Officer
- D) The battalion adjutant (or S-1), who is usually a Cadet captain or major

87. (U1C1L3:G50) The Battalion Operations and Training Officer is also known as the \_\_\_\_\_.

- A) S-1
- B) S-4
- C) S-3
- D) S-5

88. (U1C1L3:G51) Whose job is it to prepare weekly training schedules?

- A) The company executive officer (or XO)
- B) The Battalion Operations and Training Officer (S-3)
- C) The Special Projects Officer (S-5)
- D) The Battalion Command Sergeant Major

89. (U1C1L3:G52) Who is responsible for all the battalion does or fails to do?

- A) The Executive Officer
- B) The Senior Army Instructor
- C) The Command Sergeant Major
- D) The Battalion Commander

90. (U1C1L3:G53) T or F: A company commander is expected to be an expert in drill.

- A) True
- B) False

91. (U1C1L3:G54) Personnel designated as specialists are comparable to the non-commissioned officer rank of \_\_\_\_\_.

- A) Private
- B) Warrant officers
- C) Sergeants
- D) Corporal

92. (U1C1L3:G55) \_\_\_\_\_ are those personnel who have advanced above the first three entry level positions and are in a supervisory position over personnel in lower grades.

- A) Non-commissioned officers
- B) Officers
- C) Enlisted personnel
- D) Warrant officers

93. (U1C1L3:G56) The S-4, also called the Battalion Logistics or Supply Officer, is responsible for what in a battalion?

- A) For advising the staff on the condition of all weapons.
- B) For all communications between the command and outside media entities.
- C) For maintenance, security, record keeping, issue, and turn in of all U.S. government property (except ordnance).
- D) For all staff matters pertaining to security.

94. (U1C1L3:G57) A Battalion Communications Officer is also called a \_\_\_\_\_.

- A) Signal Officer
- B) Ordnance Officer
- C) Logistics Officer
- D) Executive Officer

95. (U1C1L3:G58) The Battalion \_\_\_\_\_ officer is responsible for advising the S-4, battalion commander, and instructor staff on the condition of all weapons.

- A) Signal
- B) Ordnance
- C) Special Projects

D) Executive

96. (U1C1L3:G59) Another name for the Battalion Command Sergeant Major is \_\_\_\_\_.

- A) CSM
- B) S-1
- C) Logistics officer
- D) Training officer

97. (U1C1L3:G60) Which officer in a Battalion assists the battalion commander and the instructor staff in matters pertaining to unit security?

- A) The S-2
- B) The S-3
- C) The S-4
- D) The S-5

98. (U1C1L3:G61) Commissioned officers in the U.S. military are appointed by the President and confirmed by \_\_\_\_\_.

- A) The Congress
- B) The Senate
- C) Their representatives
- D) Their company commanders

99. (U1C1L3:G62) What is "span of control?"

- A) The number of immediate subordinates, one commander, or leader can effectively control, supervise, or direct.
- B) The vertical chain of command in an organization.
- C) The lateral coordination span within a military unit.
- D) The number of subordinates a leader is directly and indirectly responsible for.

100. (U1C1L3:G63) The unity of command, the span of control, and the chain of command are the three elements of \_\_\_\_\_.

- A) Leadership
- B) Positional Authority
- C) The Pyramid of Authority

D) Command Voice

101. (U1C1L3:G64) Specialists are comparable in rank to the noncommissioned officer rank of \_\_\_\_\_.

- A) Warrant officer
- B) Corporal
- C) Sergeant Major
- D) All noncommissioned officers

102. (U1C1L3:G65) Special projects officers are also known as \_\_\_\_\_.

- A) The S-4
- B) The S-5
- C) The S-3
- D) The S-1

103. (U1C1L3:G66) Which member of the battalion staff is the principal Cadet enlisted assistant to the battalion commander?

- A) Platoon Sergeant
- B) Battalion Command Sergeant Major
- C) The S-1
- D) The S-3

104. (U1C1L3:G67) Name two responsibilities of a team leader.

- A) Set the example at all times; know your personnel
- B) Assist team members with activities.
- C) Inspect team members for preparedness.
- D) All of the above

105. (U1C1L3:G68) Whose responsibility is it to form up the squad correctly?

- A) The Squad Leader
- B) The Company Commander
- C) The Platoon Sergeant
- D) The Battalion X-O

106. (U1C1L3:G69) Whose job is it to be completely informed of all platoon matters in order to assume control of the platoon in the absence of the platoon leader?

- A) The Platoon Leader
- B) A Specialist with the longest time in grade
- C) The Platoon Sergeant
- D) The Company Commander

107. (U1C1L3:G70) T or F: A Platoon leader must enforce all orders from superiors whether or not the platoon leader agrees with them.

- A) True
- B) False

108. (U1C1L3:G71) Who in a platoon is responsible for resolving all leadership, training, and discipline problems at the platoon level?

- A) The Platoon Sergeant
- B) The Squad Leader
- C) The Platoon Leader
- D) The Company Commander

109. (U1C1L3:G72) The principle that in every effective military unit there must be only one commander who has authority and responsibility for all that unit does or fails to do is called \_\_\_\_\_.

- A) Span of Responsibility
- B) Span of Control
- C) Chain of Command
- D) Unity of Command

110. (U1C1L3:G73) The number of immediate subordinates one leader can effectively control, supervise, or direct is known as \_\_\_\_\_.

- A) Span of control
- B) Span of consideration
- C) Unity of command
- D) Chain of command

111. (U1C1L3:V1) Choose the word that best matches the definition below.

"People who devote themselves to a particular occupation or field of study; the enlisted rank in the Army corresponding to a corporal."

- A) platoons
- B) company

- C) battalion
- D) specialist
- E) enlisted

112. (U1C1L3:V2) Choose the word that best matches the definition below.

"A subdivision of a military regiment or battalion that constitutes the lowest administrative unit. It is usually under the command of a captain and is made up of at least two platoons."

- A) platoons
- B) company
- C) battalion
- D) specialist
- E) enlisted

113. (U1C1L3:V3) Choose the word that best matches the definition below.

"Relating to or constituting the part of the military force below officers."

- A) platoons
- B) company
- C) battalion
- D) specialist
- E) enlisted

114. (U1C1L3:V4) Choose the word that best matches the definition below.

"Subdivisions of a company-size military unit normally consisting of two or more squads or sections; the leader is usually a second lieutenant."

- A) platoon
- B) company
- C) battalion
- D) specialist
- E) enlisted

115. (U1C1L3:V5) Choose the word that best matches the definition below.

"A military unit made up of two or more companies or batteries and a headquarters that is commanded by a lieutenant colonel, is the smallest unit to have staff, and is administratively self-sufficient."



- A) platoon
- B) company
- C) battalion
- D) specialist
- E) enlisted

116. (U1C1L3:V6) Choose the word that best matches the definition below.

"The smallest units in the Army organization composed of a varying number of personal, depending on the type of element, and led by a noncommissioned officer."

- A) squad
- B) team
- C) succession
- D) subordinate

117. (U1C1L3:V7) Choose the word that best matches the definition below.

"A person lower in rank or grade."

- A) squad
- B) team
- C) succession
- D) subordinate

118. (U1C1L3:V8) Choose the word that best matches the definition below.

"The order of persons next in line for an office or rank that is held by another."

- A) squad
- B) team
- C) succession
- D) subordinate

119. (U1C1L3:V9) Choose the word that best matches the definition below.

"A group of people approximating one-half of a squad and normally led by a junior noncommissioned officer."

- A) squad
- B) team
- C) succession
- D) subordinate

120. (U1C1L4:Q1) While talking about awards with some other Cadets, your friend asks everyone which award they would most like to receive. While the others talked about individual awards, you were thinking about an award that would reflect your skill as a leader. Which award are you thinking about?



- A) Distinguished Cadet Award for Scholastic Excellence
- B) Honor Unit with Distinction
- C) Varsity Athletic Ribbon
- D) U. S. Army Recruiting Command Award for JROTC

121. (U1C1L4:Q2) Getting motivated, making a commitment, showing initiative, being responsible, and facing your fears are five steps that help you "Strive for Success." You already motivated yourself by saying that you are going to join Army JROTC to help reach your goals.

Which steps did you demonstrate by signing up and becoming a JROTC Cadet?

- A) Making a commitment and showing initiative
- B) Being responsible and facing your fears
- C) Facing your fears and getting motivated
- D) Getting motivated and making a commitment

122. (U1C1L4:Q3) Institutional awards are presented by superintendents, principles, and Army instructors. They recognize achievement and participation in a variety of areas. Army JROTC categorizes some awards as having more merit than others.

The order of merit for individual awards, from highest to lowest is:

- A) Academic, athletic, military, miscellaneous
- B) Academic, military, athletic, miscellaneous
- C) Military, academic, athletic, miscellaneous
- D) Military, athletic, academic, miscellaneous

123. (U1C1L4:Q4) You are a Cadet's supervisor. You assigned your Cadet to prepare and present a briefing about the structure of the Army JROTC Battalion to incoming freshmen. The Cadet immediately prepared a complete and effective presentation of the material, and gave an excellent briefing to you during rehearsal. After the rehearsal, the Cadet asked if someone else could give the presentation to the new freshmen.

He said that he did not feel comfortable speaking in front of large groups. What should your course of action be?

- A) Assign someone good at public speaking to give the briefing
- B) Counsel the Cadet on being responsible and living up to obligations
- C) Counsel the Cadet on facing fears and developing a healthy self-esteem
- D) Tell the Cadet to complete the task that was assigned

124. (U1C1L4:G1) Name the three types of unit decorations.

- A) Physical fitness awards, participation awards, and time-in-grade awards
- B) Squad, team, and platoon unit decorations
- C) Merit Unit, Honor Unit, and Honor Unit with Distinction
- D) None of the above

125. (U1C1L4:G2) What are two kinds of awards given to Cadets?

- A) Team and squad awards
- B) Personal awards and public awards
- C) Unit awards and individual awards
- D) Physical Fitness Awards and Academic Achievement Awards

126. (U1C1L4:G3) Where is the Merit Unit insignia worn on a class A or B uniform?

- A) Above the right shirt pocket.
- B) Centered over the left shirt button pocket.
- C) On the shoulder board above the rank designators.
- D) None of the above

127. (U1C1L4:G4) What color is the Honor Unit with Distinction insignia and where is it worn?

A) The yellow five-pointed star is worn above the right pocket of the class A or B uniform.

B) The blue six-pointed star is worn above the right pocket.

C) The red triangle is worn above the left pocket of class A or B uniforms.

D) The yellow five-pointed star is worn on the shoulder boards of a uniform.

128. (U1C1L4:G5) What are the two main categories of individual awards given to Cadets for superior performance?

A) Institutional and national awards

B) Personal recognition and public recognition awards

C) Merit unit awards and scholastic excellence awards

D) Team and squad awards

129. (U1C1L4:G6) Who awards the Distinguished Cadet Award for Scholastic Excellence?

A) The JROTC Senior Army Instructor

B) The Battalion commander

C) Your first or master sergeant

D) The principal of a school

130. (U1C1L4:G7) To whom is the National Sojourners Award given?

A) To a Cadet who travels extensively abroad.

B) To an outstanding Cadet at each installation who contributed the most to encourage and demonstrate Americanism.

C) To a Cadet who demonstrates academic excellence.

D) To a Cadet who demonstrates superior physical fitness.

131. (U1C1L4:G8) The annual award presented to a LET 3 Cadet for achievement of scholastic excellence in military and academic subjects and development of leadership is the \_\_\_\_\_.

A) The Recruiting Ribbon.

B) National Sojourners Award.

C) Legion of Valor Bronze Cross for Achievement.

D) President's Physical Fitness Award.

132. (U1C1L4:G9) T or F: The Recruiting Ribbon is awarded to those Cadets who are recruited into the military while in high school.

A) True

B) False

133. (U1C1L4:G10) To win the Physical Fitness Award, male Cadets must be able to run a mile in how many minutes?

- A) 10:00 or less
- B) 9:30 or less
- C) 8:30 or less
- D) 6:30 or less

134. (U1C1L4:G11) To win the Physical Fitness Award, female Cadets must be able to run a mile in how many minutes?

- A) 6:45 or less
- B) 10:45 or less
- C) 7:30 or less
- D) 8:30 or less

135. (U1C1L4:G12) Who is eligible for the Association of Military Colleges and Schools of the U.S. award?

- A) Cadets in four-year college programs.
- B) Cadets who have been in JROTC for one full year.
- C) There is no such award.
- D) Full-time Cadets who have completed at least two full years of JROTC.

136. (U1C1L4:G13) The Merit Unit, Honor Unit, and Honor Unit with Distinction are three types of \_\_\_\_\_ awards.

- A) Unit
- B) Battalion
- C) Academic
- D) Performance

137. (U1C1L4:G14) The two main categories of individual rewards given to Cadets for superior performance are \_\_\_\_\_ and \_\_\_\_\_ awards.

- A) Unit and battalion
- B) Institutional and national awards
- C) Public and private
- D) Local and state

138. (U1C1L4:G15) The award given to the outstanding Cadet at each installation who contributed the most to encourage and demonstrate Americanism is \_\_\_\_\_.

- A) The Daughters of the American Revolution Award
- B) Commendation Ribbon
- C) President's Physical Fitness Award
- D) The National Sojourners Award

139. (U1C1L4:G16) T or F: To win the JROTC Physical Fitness Award, males must run a mile in 8:30 or less, and females must run a mile in 10:45 or less.

- A) True
- B) False

140. (U1C1L4:G17) To whom is the Superior Cadet Award awarded?

- A) It is awarded annually to the Cadet with the highest G.P.A. in each LET level.
- B) It is awarded annually to the most physically fit Cadet in each LET level.
- C) It is awarded annually to the most decorated Cadet in each LET level.
- D) It is awarded to Cadet staff officers for outstanding performance.

141. (U1C1L4:G18) For what is the Daughters of the American Revolution Award given?

- A) For outstanding ability and achievement.
- B) For outstanding academic grade point average.
- C) For students with exemplary parent/daughter relationships.
- D) For Cadets with the highest scores in history in each LET level.

142. (U1C1L4:G19) For what is the Commendation Ribbon awarded?

- A) For recruiting peers into JROTC
- B) For academic excellence in one's LET level.
- C) For duty that far exceeds that expected for grade and experience of the Cadet.
- D) For high scores in Academic Challenge Competition.

143. (U1C1L4:G20) Which awards come first in the order of merit -military awards, athletic awards, or academic awards?

- A) Military awards
- B) Athletic awards
- C) Academic awards
- D) All have equal merit

144. (U1C1L4:G21) T or F: Military awards come in the first order of merit of the awards given in JROTC.

- A) True
- B) False

145. (U1C1L4:G22) The award given for duty that far exceeds that expected for grade and experience of a Cadet is the \_\_\_\_\_ Ribbon.

- A) Appreciation
- B) Experience
- C) Recruitment
- D) Commendation

146. (U1C1L4:G23) To whom is the National Sojourners Award given?

- A) The student with the highest academic average in JROTC
- B) The most outstanding LET 3 Cadet in an JROTC program.
- C) The most improved student in an JROTC program.
- D) To an outstanding Cadet who contributed the most to encourage and demonstrate Americanism.

147. (U1C1L4:G24) Name the three types of unit decorations in JROTC.

- A) Personal Unit, Merit Unit, and School Unit with Distinction
- B) School Unit, Personal Unit with Distinction, and Team Unit
- C) Team Unit, School Unit, and Merit Unit with Distinction
- D) Merit Unit, Honor Unit, and Honor Unit with Distinction

148. (U1C1L4:V1) Choose the word that best describes the scenario below.

Dan really wanted to go see the new action movie on Saturday, but he had already promised to help his dad mow the lawn.

- A) commitment
- B) initiative
- C) decorations
- D) athletic award

149. (U1C1L4:V2) Choose the word that best describes the scenario below.

Lauren was excited to go to a ceremony where she would be acknowledged for her softball skills.

- A) unit award
- B) academic award
- C) miscellaneous award
- D) athletic award

150. (U1C1L4:V3) Choose the word that best describes the scenario below.

Justin was recently acknowledged by the principal of the school for his outstanding community service.

- A) military award
- B) individual award
- C) athletic award
- D) academic award

151. (U1C1L4:V4) Choose the word that best describes the scenario below.

Roger has several ribbons and medals on his uniform, indicating his many accomplishments in JROTC.

- A) commitment
- B) motivation
- C) decorations
- D) responsibility

152. (U1C1L4:V5) Choose the word that best describes the scenario below.

Mary's teachers unanimously decided she should be recognized for all of her hard work in biology. What kind of award would they give Mary?

- A) academic award
- B) individual award
- C) unit award
- D) athletic award

153. (U1C1L4:V6) Choose the word that best describes the scenario below.

Jerry was very excited about today. His unit was to be recognized for their hard work. What kind of award was Jerry's unit receiving?

- A) miscellaneous award
- B) unit award
- C) motivation



D) responsibility

154. (U1C1L4:V7) Choose the word that best describes the scenario below.

Sandy spilt some soda on the floor at lunch when no one was looking. Instead of leaving the mess, she cleaned it up. By doing this, what was Sandy taking for her actions?

- A) unit award
- B) individual award
- C) responsibility
- D) athletic award

155. (U1C1L4:V8) Choose the word that best describes the scenario below.

Robin is to receive the Personal Appearance Ribbon today. What type of award is this?

- A) commitment
- B) motivation
- C) decorations
- D) military award

156. (U1C1L4:V9) Choose the word that best describes the scenario below.

David has a goal of being able to run two miles. He has a training plan and is going to start today. What is David showing?

- A) initiative
- B) athletic award
- C) motivation
- D) miscellaneous award

157. (U1C1L4:V10) Choose the word that best describes the scenario below.

Sophie recently received an award for recruiting three friends to the JROTC program. What kind of award did she receive?

- A) academic award
- B) individual award
- C) miscellaneous award
- D) military award

158. (U1C1L4:V11) Choose the word that best describes the scenario below.

Debbie's parents told her if she received an "A" on her math test, they would buy Debbie the

new tennis racket she had been wanting. She plans to study very hard during the week before the test. With the promise of a new tennis racket, what are Debbie's parents providing her?

- A) commitment
- B) motivation
- C) decorations
- D) initiative

159. (U1C1L5:Q1) Read the following statements, and select the correct answer.

The Class A uniform is worn during ceremonies, social functions, formal inspections, and as required by the Army JROTC Instructor.

The Class B uniform is worn at summer camp, field training, and while participating on special teams.

- A) Both statements are TRUE.
- B) Both statements are FALSE.
- C) The first statement is TRUE; the second is FALSE.
- D) The first statement is FALSE; the second is TRUE.

160. (U1C1L5:Q2) Which of the following rules for placement of awards, insignias, and decorations is not correct?

- A) Awards are worn in order of precedence from top to bottom and from right to left
- B) Brass articles like the lapel insignia, belt buckle, and cap insignia should be highly shined and free of tarnish
- C) On the male uniform, the nameplate is centered on the right pocket between the top pocket seam and the top of the button hole
- D) On the female uniform, the Honor Unit Star is worn one-half inch above the nameplate and centered

161. (U1C1L5:Q3) A junior Cadet asked you to check his uniform prior to an inspection that is to occur in two days. When you inspect it, you find that the overall appearance of the uniform looks good, but there are several deficiencies that you think the Cadet should have found. Which one of the following courses of action should you take to teach the Cadet how to properly conduct a pre-inspection?

- A) Give the Cadet a list of the corrections he needs to make, and have him come back tomorrow for another pre-inspection, then repeat it again if necessary
- B) Have the Cadet create or find a checklist with all of the parts of the uniform, conduct his own self-inspection, then bring it back to you to make sure he did it properly
- C) Make the necessary corrections to make sure the Cadet is prepared

D) Tell the Cadet that he has some deficiencies and to figure out what they are and to correct them prior to the inspection

162. (U1C1L5:Q4) You are the battalion commander of an Army JROTC battalion, and you will be conducting a uniform inspection of your battalion today. You are confident that your uniform is correct because you have won several competitions involving wear of the uniform and your Battalion Sergeant Major conducted a pre-inspection for you. However, you woke up late after studying all night and didn't have time to shave before you went to school. Although good grooming is important, this is a uniform inspection after all, and the inspection begins in five minutes.

Which of the following courses of action should you take?

- A) Conduct the inspection, but inspect only uniforms, not personal appearance and grooming
- B) Cancel the inspection because you are not ready for it
- C) Delegate the conduct of the inspection to your Battalion Sergeant Major
- D) Inform the chain of command that the inspection will be delayed for 5 minutes while you shave

163. (U1C1L5:G1) What uniform is worn during ceremonies, social functions, and formal inspections?

- A) Class B Uniform
- B) ACU Uniform
- C) Class A Uniform
- D) None. Civilian clothes are worn for these events.

164. (U1C1L5:G2) What uniform is worn during all occasions except field training and formal social occasions?

- A) Class A uniforms
- B) The ACU
- C) Class B uniforms
- D) Any of the above

165. (U1C1L5:G3) T or F: A black neck tie is optional with the long-sleeved shirt of the Class B uniform.

- A) True
- B) False

166. (U1C1L5:G4) T or F: A black necktie is optional with the Class B short-sleeved shirt.

- A) True
- B) False

167. (U1C1L5:G5) T or F: A black belt with a brass buckle must be worn with a Class A uniform even though the belt does not show.

- A) True
- B) False

168. (U1C1L5:G7) The appropriate dress for summer camp and for participation on special teams is the \_\_\_\_\_ uniform.

- A) Class A
- B) Class B
- C) Army Combat
- D) Military Dress Blue

169. (U1C1L5:G8) How is the garrison cap positioned on the head?

- A) With the front vertical crease of the cap centered on the forehead in a straight line with the nose and tilted slightly to the right but not touching the ear.
- B) With the back vertical crease of the cap centered on the forehead in a straight line with the nose and tilted slightly to the right touching the ear.
- C) With the front vertical crease of the cap centered on the forehead in a straight line with the nose and tilted slightly to the left but not touching the ear.
- D) With the back vertical crease touching the nape of the neck tilted slightly towards the right ear.

170. (U1C1L5:G9) What insignias do Cadet officers wear on their garrison caps?

- A) Grade insignias
- B) Unit insignias
- C) Sublevel insignias
- D) They don't wear insignias on caps.

171. (U1C1L5:G10) What insignia does an enlisted Cadet wear on the garrison cap?

- A) Grade insignia
- B) Subdued insignia
- C) Yellow Honor Unit with Distinction insignia
- D) ROTC insignia

172. (U1C1L5:G11) Where is the insignia positioned on the Cadet garrison cap?

A) On the left side of the cap one inch from the crease and centered vertically between the top braid and the cap's bottom.

B) On the right side of the cap, centered between the braid and the cap's bottom.

C) On the crease and one inch from the bottom.

D) The insignia is not worn on the garrison cap.

173. (U1C1L5:G12) Where are grade insignias worn on both the long and short sleeved JROTC shirts?

A) On the shirt pocket on the left side.

B) On the shirt pocket on the right side.

C) It varies between schools. Generally they are worn on shoulder marks or shirt collars.

D) None of the above.

174. (U1C1L5:G13) On the male uniform, where is the nameplate placed on the uniform?

A) On the left pocket over the heart.

B) On top of and covering the pocket flap seam on the right pocket.

C) On the left pocket between the top pocket seam and the top of the buttonhole.

D) On the right pocket between the top pocket seam and the top of the pocket buttonhole.

175. (U1C1L5:G14) What is a gigline?

A) A type of fishing equipment used for catching frogs or toads.

B) A line formed by the seam of the shirt aligned with the zipper flap and the edge of the belt buckle on certain JROTC uniforms.

C) A queue of Soldiers waiting to use a telephone.

D) A line of individuals in a particular marching formation.

176. (U1C1L5:G15) T or F: For males, t-shirts are optional under Class A and B uniforms.

A) True

B) False

177. (U1C1L5:G16) T or F: Wearing of hats out-of-doors is optional with uniforms, depending on the weather.

A) True

B) False

178. (U1C1L5:G17) T or F: Male Cadets are allowed to wear facial hair if it is well groomed and in good taste.

- A) True
- B) False

179. (U1C1L5:G18) How much jewelry is a female Cadet allowed to wear?

- A) An unlimited amount as long as it is in good taste
- B) A wrist watch, an identification bracelet, no more than two rings, and small circular earrings that do not exceed  $\frac{1}{4}$  inch in diameter
- C) Two pieces; not including a wristwatch
- D) Seven pieces

180. (U1C1L5:G19) T or F: The supply officer is responsible for ensuring that Cadets' uniforms are cleaned and pressed.

- A) True
- B) False

181. (U1C1L5:G20) T or F: Black tennis or casual shoes such as loafers may be substituted for black low quarter shoes or pumps with the JROTC uniforms.

- A) True
- B) False

182. (U1C1L5:G21) Who is responsible for inspecting the uniform prior to a formal inspection?

- A) The company first sergeant
- B) The Cadet wearing the uniform inspects it first, then a peer inspects the uniform, and then the Cadet stands for a formal inspection.
- C) The Executive Officer, or XO
- D) The Squad leader

183. (U1C1L5:G22) What is the standard for a male Cadet's hair style?

- A) The hairs must meet the bottom of the shirt collar.
- B) It must be neatly trimmed with sideburns no lower than the bottom of the ear lobe.
- C) Any style is acceptable as long as it is clean and well-groomed.
- D) The hair must be neatly trimmed with sideburns no lower than the bottom of the ear opening.

184. (U1C1L5:G23) What is the standard for a female Cadet's hair style?

- A) Should be styled so that it does not touch the top of the collar and so the cap can be worn easily.

B) There is no standard as long as it is well groomed and the cap can be worn correctly.  
C) It must be cut so it does not touch the top of the shirt collar.  
D) It must be really trimmed with sideburns no lower than the bottom of the ear opening.

185. (U1C1L5:G24) Name three factors that affect personal appearance.

- A) Height, weight, and blood pressure.
- B) Tidy hair, clean fingernails, and good posture.
- C) Age, income, and race.
- D) All of the above.

186. (U1C1L5:G25) T or F: Battle Dress Uniforms may be worn outside of school activities, such as during a hunting weekend or at a workplace that involves physical labor.

- A) True
- B) False

187. (U1C1L5:G26) If a male Cadet is wearing a long-sleeved Class B uniform shirt, the Cadet must also wear a \_\_\_\_\_.

- A) Black necktie
- B) Garrison cap
- C) Green necktie
- D) Subdued grade insignias

188. (U1C1L5:G27) The headgear that is approved for wear with the Class A or B uniform is called the \_\_\_\_\_.

- A) Class A cap
- B) Class B headgear
- C) Garrison cap
- D) Any of the above

189. (U1C1L5:G28) When wearing shoulder cords, where is the ferrule positioned?

- A) To the front of the uniform.
- B) Towards the shirt collar.
- C) To the back of the uniform.
- D) Down the crease of the shirt sleeve.

190. (U1C1L5:G30) For enlisted Cadets, what direction does the chevron of a grade insignia point on a uniform shirt?

- A) The chevron points toward the sleeve.
- B) The chevron points toward the front pocket.
- C) The chevron points toward the shoulder blade.
- D) The chevron points toward the collar.

191. (U1C1L5:G31) What is the purpose of wearing white t-shirts beneath Class A and B uniform shirts?

- A) To protect the clothing from damaging perspiration.
- B) To wick moisture away from the body, thereby preventing heat injuries.
- C) To keep the wearer warm so as to prevent hypothermia.
- D) To make the uniform look tidy and fit better.

192. (U1C1L5:G32) T or F: Fad hair styles are allowed on Cadets as long as they don't interfere with proper wearing of the garrison cap.

- A) True
- B) False

193. (U1C1L5:G33) Name three elements of good grooming.

- A) Daily showers, teeth brushing, a rested appearance, clean hands and nails, a tidy uniform, etc
- B) Table manners, using proper salutations with others, and writing proper thank-you notes
- C) Painting one's nails, standing up straight, and setting a proper table
- D) Weekly showers, teeth brushing, a tidy uniform, a rested appearance, and clean hands and nails

194. (U1C1L5:G34) The line formed by the seam of the shirt aligned with the zipper flap and the edge of the belt buckle on certain JROTC uniforms is known as the \_\_\_\_\_.

- A) Gigline
- B) Trouser line
- C) Shirt alignment
- D) Straight gig

195. (U1C1L5:G35) What is the main cause of tarnish on brass belt buckles and uniform buttons?

- A) Baby oil
- B) Friction
- C) Air
- D) Perspiration



196. (U1C1L5:G36) Individual awards for academic, athletic, and military excellence are worn where on the uniform?

- A) On the left shirt pocket or left pocket area.
- B) On the left sleeve, one inch above the hem, and centered.
- C) On the right shirt pocket or pocket area.
- D) On the left collar, just above the rank insignias.

197. (U1C1L5:G37) T or F: When wearing individual awards, it is appropriate to wear the ribbon and the medal for the same award at the same time.

- A) True
- B) False

198. (U1C1L5:G38) When is it appropriate to start a second row of individual award ribbons on a uniform shirt?

- A) When you have four or more ribbons
- B) When the row goes from center buttons to the side seam
- C) When you have at least six ribbons
- D) When your number of ribbons can be evenly divided for balance

199. (U1C1L5:G39) Ribbons are worn on the uniform in order of precedence. Define "precedence."

- A) In order according to the date they were received
- B) In order according to how much you value them
- C) In order according to importance
- D) In order according to their sentimental value

200. (U1C1L5:G40) What is a ferrule on a uniform?

- A) A decorative metal cap attached to the end of a shoulder cord to prevent fraying
- B) An animal symbol often found on unit badges
- C) Another name for the brass belt buckle
- D) The device on the back of nameplates and ribbons into which the sharp end of a pin goes

201. (U1C1L5:G41) Where are honor unit stars worn on a uniform?

- A) One-fourth of an inch above the top seam of the left pocket
- B) One-fourth of an inch above the rank insignia on the shirt collar
- C) Above and centered on the row of ribbons

D) One-fourth of an inch above the top seam of the right pocket

202. (U1C1L5:G42) T or F: An honor unit star is always worn by itself and unadorned.

A) True

B) False

203. (U1C1L5:G43) A decorative metal cap attached to the end of a shoulder cord to prevent it from fraying is called a \_\_\_\_\_.

A) Ferrule

B) Stay

C) Blousing garter

D) Fray cap

204. (U1C1L5:G44) Ribbons are worn on the uniform in order according to importance, also called \_\_\_\_\_.

A) Precedence

B) Rank

C) Preference

D) File

205. (U1C1L5:G45) T or F: It is appropriate to start a second row of ribbons on a uniform shirt when you have six or more individual award ribbons.

A) True

B) False

206. (U1C1L5:G46) T or F: It is inappropriate to wear the ribbon and the medal for the same award at the same time.

A) True

B) False

207. (U1C1L5:G47) What awards are worn on the left shirt pocket or left pocket area of the uniform?

- A) Unit awards for Cadet academic and athletic performance
- B) Individual awards for academic, athletic, or military excellence
- C) All awards a Cadet is authorized to wear
- D) Only individual competitive awards

208. (U1C1L5:G48) The main cause of tarnish on brass belt buckles and uniform buttons is \_\_\_\_\_.

- A) Oxidation
- B) Respiration
- C) Perspiration
- D) Recreation

209. (U1C1L5:G49) What is a gigline?

- A) A method for catching frogs.
- B) The alignment of one's hands with the seam of the uniform trousers.
- C) How straight one stands while at attention.
- D) The alignment of the edge of the uniform shirt, the belt buckle, and the flap of the zipper on trousers.

210. (U1C1L5:G50) Cleanliness that includes showering, teeth brushing, clean hands and nails, and a tidy uniform are all elements of \_\_\_\_\_.

- A) A code of conduct
- B) Healthiness
- C) Good grooming
- D) Etiquette

211. (U1C1L5:G51) T or F: Male Cadets are prohibited from wearing facial hair with the uniform.

- A) True
- B) False

212. (U1C1L5:G52) T or F: The JROTC instructor is responsible for making all decision on appropriateness of fad hair styles worn with the uniform.

- A) True
- B) False

213. (U1C1L5:V1) Choose the word that best matches the definition below.

"The arrangement of several elements on the same line."

- A) nap
- B) precedence
- C) bisecting
- D) align

214. (U1C1L5:V2) Choose the image showing an "Army Combat Uniform (ACU)."

A)



B)



c)



215. (U1C1L5:V3) Choose the word that best matches the definition below.

"To cut or divide into two equal parts.

- A) nap
- B) precedence

- C) bisecting
- D) align

216. (U1C1L5:V4) Choose the image showing a "Class A Uniform."

A)



B)



C)



217. (U1C1L5:V5) Choose the image showing a "Class B Uniform."

A)



B)



c)



218. (U1C1L5:V6) What is the definition of the word "chevron"?

- A) a decorative metal cap attached to the end of a shoulder cord to prevent fraying
- B) line formed by the seam of the shirt aligned with the zipper flap and edge of the belt buckle
- C) a soft, fuzzy finish or cloth formed by short fibers raised on the surface
- D) insignia consisting of stripes meeting at an angle to indicate (enlisted) grade or rank



219. (U1C1L5:V7) What is the definition of the word "ferrule"?

- A) a decorative metal cap attached to the end of a shoulder cord to prevent fraying
- B) line formed by the seam of the shirt aligned with the zipper flap and edge of the belt buckle
- C) a soft, fuzzy finish or cloth formed by short fibers raised on the surface
- D) insignia consisting of stripes meeting at an angle to indicate grade or rank

220. (U1C1L5:V8) Choose the word that best matches the definition below.

"To adapt to the proper size or shape."

- A) fitted
- B) sized
- C) hemmed
- D) align

221. (U1C1L5:V9) Choose the word that best describes the scenario below.

This day occurs on a set schedule and the Cadets anticipate it with pride. They wear their Class A uniforms and wait for the official examination of their JROTC unit.

- A) garrison inspection
- B) formal inspection
- C) pre-inspection
- D) prom

222. (U1C1L5:V10) Choose the uniform where you would not wear a garrison gap.

- A)



B)



C)



223. (U1C1L5:V11) What is the definition of the word "gigline"?

- A) a decorative metal cap attached to the end of a shoulder cord to prevent fraying
- B) line formed by the seam of the shirt aligned with the zipper flap and edge of the belt buckle
- C) a soft, fuzzy finish or cloth formed by short fibers raised on the surface
- D) insignia consisting of stripes meeting at an angle to indicate grade or rank

224. (U1C1L5:V12) Choose the word that best matches the definition below.

"To fold back and stitch down the edge of a garment."

- A) fitted
- B) sized
- C) bisected
- D) hemmed

225. (U1C1L5:V13) Choose the word that completes the title of this image in the red box.

CATEGORY	[ ] of the United States Army						
ENLISTED  (Green and Gold)	E-1	E-2	E-3	E-4		E-5	E-6
	no insignia Private	Private	Private 1st Class	Corporal	Specialist	Sergeant	Staff Sergeant
	E-7	E-8		E-9			
	Sergeant 1st Class	Master Sergeant	1st Sergeant	Sergeant Major	Command Sergeant Major	Sergeant Major of the Army	
WARRANT OFFICER  (Silver and Black)	W-1	W-2	W-3	W-4	W-5		
	Warrant Officer	Chief Warrant Officer	Chief Warrant Officer	Chief Warrant Officer	Master Warrant Officer		
COMPANY AND FIELD GRADE OFFICER  (Gold and Silver)	0-1	0-2	0-3	0-4	0-5	0-6	
	(gold) 2nd Lieutenant	(silver) 1st Lieutenant	Captain	Major	(silver) Lieutenant Colonel	Colonel	
	0-7	0-8	0-9	0-10		0-11	
GENERAL OFFICER  (Silver)							
	Brigadier General	Major General	Lieutenant General	General		General of the Army	

- A) Chevron
- B) Shoulder Marks
- C) Insignia
- D) Giglines

226. (U1C1L5:V14) What is the definition of the word "nap"?

- A) a decorative metal cap attached to the end of a shoulder cord to prevent fraying
- B) line formed by the seam of the shirt aligned with the zipper flap and edge of the belt buckle
- C) a soft, fuzzy finish or cloth formed by short fibers raised on the surface
- D) insignia consisting of stripes meeting at an angle to indicate grade or rank

227. (U1C1L5:V15) Choose the antonym for the word below.

nonsubdued

- A) bright

- B) dull
- C) shiny
- D) polished

228. (U1C1L5:V16) Choose the words that best complete the sentence below.

Wear your ribbons in order of \_\_\_\_\_ from top to bottom and from your right to left in one or more rows.

- A) precedence
- B) alignment
- C) gignline
- D) size

229. (U1C1L5:V17) Choose the word that best describes the scenario below.

You're looking forward to the big day and want to make sure your unit shines. Your instructor gives you a chance to make sure everything is in its proper place on your uniform and looks sharp.

- A) garrison inspection
- B) formal inspection
- C) pre-inspection
- D) prom

230. (U1C1L5:V18) Choose the words that best complete the sentence below.

\_\_\_\_\_ are a pair of broad pieces of stiffened cloth worn on uniforms to display the \_\_\_\_\_ of grade.

- A) Shoulder marks, insignia
- B) Ranks, precedence
- C) Shoulder boards, chevron
- D) Ferrules, insignia

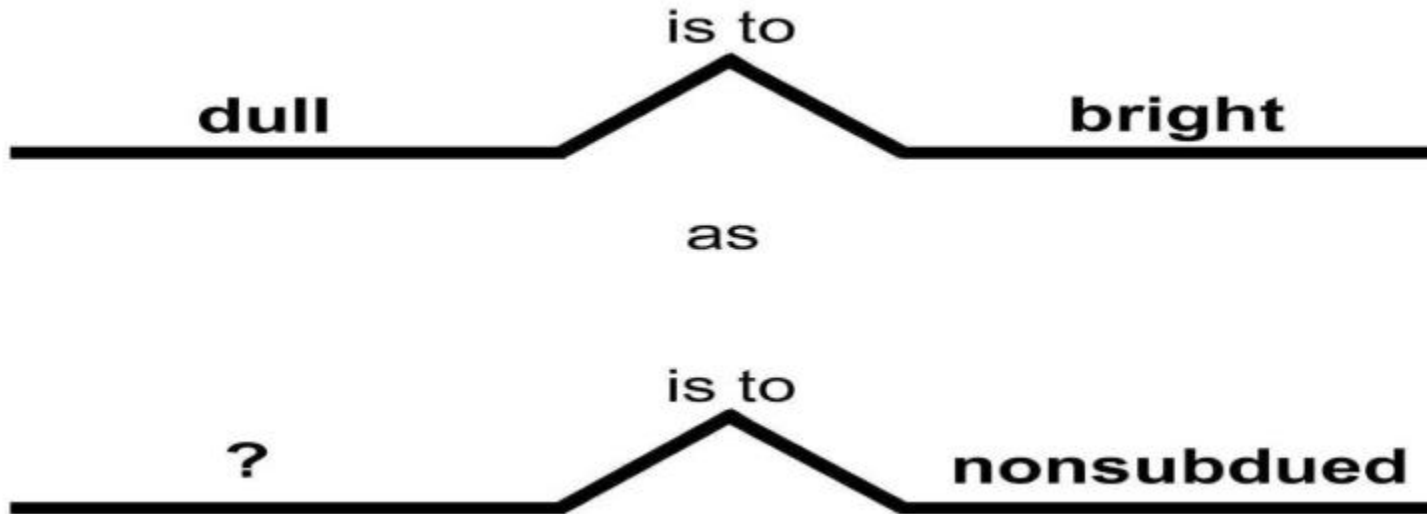
231. (U1C1L5:V19) Choose the word that best matches the definition below.

"The physical dimensions, proportions, magnitude, or extent of an object."

- A) sized
- B) hemmed

- C) fitted
- D) tarnish

232. (U1C1L5:V20) What word completes this analogy?



- A) tarnish
- B) divide
- C) align
- D) shining

233. (U1C1L6:Q1) A fellow Cadet was giving a presentation about our nation's flag. You noticed that some of his information was not accurate. Of the following sentences in his presentation, which of the following is not true about our nation's flag?

- A) The stripes represent the thirteen original colonies
- B) The garrison flag is flown on national holidays, except in stormy or windy weather when the storm flag is flown
- C) The stars each represent a specific state
- D) President Truman and Congress designated June 14<sup>th</sup> of each year as National Flag Day

234. (U1C1L6:Q2) Which of the following situations describes an incorrect way of displaying the United States Flag?

- A) Flags on walls, windows, or buildings are displayed with the union to the observer's upper left
- B) In parades or processions with other flags, the United States flag is always carried at the far right of a row, or to the front and center a column
- C) In auditoriums, meeting halls, or chapels, the United States flag is displayed to the

speaker's right as they face the audience

D) On Memorial Day, the flag is displayed at half-staff until the end of the day when it is raised to the top of the staff, then solemnly lowered

235. (U1C1L6:Q3) Prior to an assembly in the gym, you are watching the color guard practice posting the colors. During one of their rehearsals, you observe a new Cadet, not in uniform, stand at attention and render a hand salute as the flag passes him. As a leader who believes in giving positive feedback or making on-the-spot corrections, what do you tell him?

A) You commend him for showing the flag the proper respect.

B) You inform the Cadet that the proper procedure for showing respect indoors is to stand at attention and place his hand over his heart as the flag passes.

C) You inform the Cadet that he should call "Attention," then "Present, Arms" as the flag approaches, then "Order, Arms" after the flag has moved 6 paces past him.

D) You inform the Cadet that the proper procedure for showing respect indoors, whether in uniform or not, is to stand at attention until the flag is six steps past him.

236. (U1C1L6:Q4) You are in charge of your unit's color guard. You will be raising the flag in front the local National Guard Armory on President's Day, a national holiday. It is raining very hard when you get to the armory, and the wind is gusting up to 35 miles per hour. Your assistant asks which flag you want to raise.

Which flag should you select?

A) Ensign Flag

B) Garrison Flag

C) Post Flag

D) Storm Flag

237. (U1C1L6:G1) In what year did the Continental Congress establish the first stars and stripes flag?

A) 1776

B) 1845

C) 1902

D) 1777

238. (U1C1L6:G2) Who is credited with sewing the first U.S. flag?

A) George Washington

B) Mary Todd Lincoln

C) Betsy Ross

D) Martha Washington

239. (U1C1L6:G3) What do the stripes on the U.S. flag represent?

- A) The thirteen stripes represent the original thirteen colonies
- B) The blood lost in the Civil War
- C) The thirteen original signers of the Constitution
- D) The first thirteen states to join the Confederacy

240. (U1C1L6:G4) What do the colors on the U.S. flag represent?

- A) White represents Northern States; Red represents Southern states; Blue represents the Union
- B) Blue represents hope, purity, and innocence; White represents hardiness and valor; Red represents reverence to God, loyalty, vigilance, perseverance, and justice
- C) White represents death; Red represents rebellion; Blue represents clear skies of freedom
- D) White represents hope, purity, and innocence; Red represents hardiness and valor; Blue represents reverence to God, loyalty, vigilance, perseverance, and justice

241. (U1C1L6:G5) The terms "colors," "standard," and "ensign" are all synonyms for \_\_\_\_\_.

- A) The flag
- B) An officer's rank
- C) Enlisted ranks
- D) Patriotic bunting

242. (U1C1L6:G6) Name the three most common types of U.S. flags.

- A) Small, medium, and large
- B) Small, regulation, and garrison
- C) Storm, regulation, and foul weather
- D) Garrison, post, and storm

243. (U1C1L6:G7) What is the size and use of a garrison flag?

- A) The 10 feet by 19 feet flag is used for general display.
- B) The 20 feet by 38 feet garrison flag is flown at government buildings and military installations on all national holidays and for special occasions declared by the President.
- C) The 5 feet by 9½ feet flag is used during storms and windy weather.
- D) The 30 feet by 60 feet flag is displayed from atop multi-story buildings.

244. (U1C1L6:G8) What is the size and use of the post flag?



- A) The 20 feet by 38 feet flag is flown at government and military installations.
- B) The 5 feet by 9½ feet flag is used during storms and windy weather.
- C) The 30 feet by 60 feet flag is flown from atop multi-story buildings.
- D) The 10 feet by 19 feet flag is for general display when the garrison flag is not appropriate.

245. (U1C1L6:G9) What is the size and use of the storm flag?

- A) The 20 feet by 38 feet flag is flown at government and military installations.
- B) The 5 feet by 9 ½ feet storm flag is flown by state and federal governments only during stormy or windy weather.
- C) The 30 feet by 60 feet flag is flown from atop multi-story buildings.
- D) The 10 feet by 19 feet flag is for general display when the garrison flag is not appropriate.

246. (U1C1L6:G10) How do you properly dispose of a flag that is old or worn?

- A) Buried at sea.
- B) You should destroy it as a whole, privately, respectfully, and traditionally by burning it.
- C) Bury it in an urn in a National military cemetery.
- D) Tear it into strips or cut it into quarters and then burn it.

247. (U1C1L6:G11) When outdoors but not in formation, how and when do you show respect for the flag when you walk past it?

- A) You come to a full stop, come to attention, and render a hand salute.
- B) You should turn your head towards the flag and render a hand salute when you pass within six steps of the flag.
- C) You turn your head towards the flag and render a hand salute when ten steps from the flag, holding the hand salute until you are ten steps past the flag.
- D) None of the above

248. (U1C1L6:G12) The original thirteen colonies of the U.S. are represented on the flag by \_\_\_\_\_.

- A) The thirteen red and white stripes
- B) The color red
- C) The color white
- D) The white stars on the blue field

249. (U1C1L6:G13) What is a synonym for "flag" that is used by JROTC personnel.

- A) All of the below answers are correct.
- B) "Colors"
- C) "Ensign"
- D) "Standard"

250. (U1C1L6:G14) The \_\_\_\_\_ flag measures 20 feet by 38 feet and is flown on special occasions.

- A) Garrison
- B) Post
- C) Storm
- D) Ceremonial

251. (U1C1L6:G15) The \_\_\_\_\_ flag measures 10 feet by 19 feet and is used for general display.

- A) Storm
- B) Garrison
- C) Post
- D) Common

252. (U1C1L6:G16) The \_\_\_\_\_ flag measures 5 feet by 9-½ feet and is flown only during high winds or stormy weather.

- A) Storm
- B) Garrison
- C) Post
- D) Ceremonial flag

253. (U1C1L6:G17) The traditional way of disposing of a flag that is worn or badly stained is by \_\_\_\_\_.

- A) Burning
- B) Burial
- C) Burial at sea
- D) Tearing to bits and allowing the pieces to blow away.

254. (U1C1L6:G18) The original Pledge of Allegiance was written in \_\_\_\_\_.

- A) 1892
- B) 1942
- C) 1776
- D) 1392

255. (U1C1L6:G19) When was the Pledge of Allegiance written?

- A) In 1892. Congress officially recognized the pledge in 1942.
- B) In 1776. Congress officially recognized the pledge that same year.
- C) In 1492. Congress officially recognized the pledge in 1789.
- D) In 1945. Congress officially recognized the pledge that same year.

256. (U1C1L6:G20) What is the proper way to raise and lower a U.S. flag?

- A) It should be raised ceremoniously and lowered briskly.
- B) It always should pause at half-mast for a brief moment.
- C) It should be raised and lowered in a hurry to keep it from getting dirty.
- D) It should be raised briskly and lowered ceremoniously.

257. (U1C1L6:G21) T or F: U.S. flags may only fly from sunrise to sunset.

- A) True
- B) False

258. (U1C1L6:G22) Presidential proclamations contain the rules for displaying the flag at half-staff. For example, on Memorial Day, we display the flag at half-staff until noon, then raise it to the top of the staff. When do State and Federal governments also fly the flag at half-staff.

- A) a national emergency
- B) a terrorist attack
- C) a signal of relief
- D) when there is a death of a president, former president, principal official, or foreign dignitary

259. (U1C1L6:G23) What is the protocol for raising a flag to half mast in tribute to a deceased person?

- A) First raise the flag to the peak of the staff, then lower it to the half-staff position.
- B) Raise the flag to the midpoint of the pole and leave it there.
- C) Raise it immediately to half staff while those around salute it.
- D) Raise the flag to the peak of the staff, then lower all the way back down, then raise it up to the half-staff position.

260. (U1C1L6:G24) When displaying a flag flat against a wall either horizontally or vertically, how is it positioned?

- A) It is positioned with the union upper most and to the flag's own right (or to the observer's left).
- B) You should never display a flag flat against a wall.

- C) It is positioned with the union closest to the floor.
- D) It is positioned with the union upper most and to the flag's own left (or the observer's right).

261. (U1C1L6:G25) What is the "union" on the U.S. flag?

- A) The emblem on the flag symbolizing the southern states
- B) The emblem on the flag symbolizing the northern states
- C) The emblem on a flag symbolizing unity, such as the blue rectangle and stars on the U.S. flag
- D) The emblem on a flag symbolizing discord in our nation's history

262. (U1C1L6:G26) What is the proper way to display a U.S. flag in a window?

- A) Make sure the flag is outside the window in the open air.
- B) Place it with the union to the right of the observer in the street.
- C) Place it with the union to the left of the observer in the street.
- D) Place it with the union in the bottom left of the window as you face the window.

263. (U1C1L6:G27) What direction does the union of a U.S. flag point when it is hung vertically across an east-west street?

- A) The union is to the north
- B) The union is to the south
- C) The union is to the east
- D) The union is to the west

264. (U1C1L6:G28) When a U.S. flag is used to drape a casket, where is the union positioned?

- A) The union is positioned over the feet.
- B) The union is positioned at the head and over the right shoulder.
- C) The union is positioned at the head and over the left shoulder.
- D) The flag is never buried with a casket because a flag should never touch the ground.

265. U1C1L6:G29. T or F: On special occasions, a U.S. flag may be buried with a casket.

- A) True
- B) False

266. U1C1L6:G30. When flying more than one flag on a single halyard, where is the U.S. flag placed?

- A) To the left of all other flags
- B) At the peak of the staff, unless at the United Nations or at a religious service at sea

C) To the right of all other flags, unless at the United Nations or at a religious service at sea

D) At midstaff but at the same height as all other flags

267. U1C1L6:G31. What are the orders a commander calls to a formation of Cadets when Colors are about to pass by?

A) "Attention" and "To the flag"

B) "Attention" and "Face the Colors"

C) "To the flag" and "Present, Arms"

D) The commander orders "attention" and "present, arms" when the Colors are within six steps of the unit.

268. U1C1L6:G32. T or F: The traditional way of disposing of a U.S. flag is by burial at sea.

A) True

B) False

269. U1C1L6:G33. When the Colors are past a unit in formation, what command does a commander give to end a hand salute, and when is the command given?

A) The commander orders "restore, arms" when the Colors are six steps past the unit.

B) The commander orders "order, arms" once the Colors are six steps past the unit.

C) The commander orders "order, arms" when the Colors are twelve steps past the unit.

D) The commander orders "side, arms" when the Colors are six steps past the unit.

270. U1C1L6:G34. What does the color white on the U.S. flag symbolize?

A) Seven of the original 13 colonies

B) Hardiness and valor

C) Reverence for God, loyalty, justice

D) Hope, purity, and innocence

271. U1C1L6:G35. What does the color red on the U.S. flag symbolize?

A) It represents six of the original 13 colonies

B) The blood that was shed at Valley Forge

C) Hardiness and valor

D) Hope, purity, and innocence

272. U1C1L6:G36. What does the color blue on the U.S. flag symbolize?

A) The oceans that surround the U.S.

B) Hope, purity, and innocence.

C) Hope, purity, and innocence.  
D) The color of heaven for reverence for God, loyalty, vigilance, perseverance, and justice.

273. U1C1L6:G37. Name the three types of commonly displayed flags.

- A) Garrison, post, and storm flags
- B) Large, medium, and small
- C) Fair weather, foul weather, and garrison
- D) Garrison, post, and inclement

274. U1C1L6:G38. T or F: Each star on the U.S. flag has a particular state assigned to it.

- A) True
- B) False

275. U1C1L6:G39. In what year was the current 50-star U.S. flag adopted?

- A) 1959
- B) 1945
- C) 1960
- D) 1917

276. U1C1L6:G40. T or F: The flag that General George Washington stood under in 1776 when he took command of the Continental Army had on it the 13 Union stars in a circle.

- A) True
- B) False

277. U1C1L6:G41. When raising and lowering the U.S. flag to half-staff, what is the process?

- A) The flag should be raised to only half-staff and all other flags should be below it.
- B) On both raising and lowering the flag, it must first be raised to its peak position.
- C) Either the U.S. Congress or the President can order the flag to half-staff.
- D) When the flag is flown at half-staff, it is a sign the nation is in mourning.

278. U1C1L6:G42. When displaying a U.S. Flag by suspending it over a street, where is the union located?

- A) To the left of the stripes
- B) To the North on an east-west street, or to the East on a north-south street
- C) To the right of the stripes
- D) To the South on an east-west street, or to the West on a north-south street

279. U1C1L6:G43. What is the appropriate placement of a U.S. flag over a casket?

- A) The union should be at the head over the right shoulder.
- B) The union should be placed to the right of the audience.
- C) The union should be at the head and over the left shoulder.
- D) The stripes should be placed along the length of the casket.

280. U1C1L6:G44. T or F: Flags used during funerals may be allowed to touch the ground.

- A) True
- B) False

281. U1C1L6:G45. When displaying the flags of two or more nations, how are they hung?

- A) With the U.S. flag on top.
- B) With the U.S. flag below the guest nation's flag.
- C) From separate flagstaffs or poles of the same height and size.
- D) With the U.S. flag on the right.

282. U1C1L6:G46. Where is the U.S. flag carried when in procession with other flags?

- A) The U.S. flag should be on the right of the audience.
- B) The U.S. flag should stand higher than other flags.
- C) The U.S. flag is on the far right of the row of marching persons or in the front and center position if it is in a line of flags.
- D) The U.S. flag should be carried in front of, not in line with, other flags.

283. U1C1L6:G47. How do you position a flag for display in a window?

- A) Place it with the union to the left of the observer in the street.
- B) The U.S. flag should be placed with the union up.
- C) Place it with the union to the right of the observer in the street.
- D) Place it with the stripes to the left of the observers.

284. U1C1L6:G48. What is the size of a garrison flag?

- A) 10 feet by 26 feet
- B) 20 feet by 38 feet

- C) 5 feet by 9 feet
- D) 18 feet by 32 feet

285. U1C1L6:G49. What is the size of a post flag?

- A) 5 feet by 11 feet
- B) 7 feet by 13 feet
- C) 20 feet by 32 feet
- D) 10 feet by 19 feet

286. U1C1L6:G50. What is the size of a storm flag?

- A) 5 feet by 9 ½ feet
- B) 7 feet by 11 feet
- C) 20 feet by 39 feet
- D) 11 feet by 17 feet

287. U1C1L6:G51. The traditional method of destroying an old or worn flag is by \_\_\_\_\_.

- A) Burial
- B) Burning
- C) Disposal at sea
- D) None of the above

288. U1C1L6:G52. The flag that is flown during high winds or bad weather is the \_\_\_\_\_ flag.

- A) Garrison
- B) Standard
- C) Post
- D) Storm

289. U1C1L6:G53. The flag that is used for general display purposes is the \_\_\_\_\_ flag.

- A) Garrison
- B) Post
- C) Storm
- D) None of the above



290. U1C1L6:G54. The flag that is flown on special occasions is the \_\_\_\_\_.

- A) Special
- B) Storm
- C) Post
- D) Garrison

291. U1C1L6:G55. "Colors," "ensign," and "standard" are synonyms for \_\_\_\_\_.

- A) Banners
- B) Flags
- C) Uniforms
- D) Rank

292. U1C1L6:G56. The color \_\_\_\_\_ on the U.S. flag represents reverence for God, loyalty, vigilance, perseverance, and justice.

- A) Red
- B) Blue
- C) Blue
- D) White

293. U1C1L6:G57. The color \_\_\_\_\_ on the U.S. flag symbolizes hardiness and valor.

- A) Green
- B) White
- C) Blue
- D) Red

294. U1C1L6:G58. The color \_\_\_\_\_ on the U.S. Flag symbolizes hope, purity, and innocence.

- A) Green
- B) Blue
- C) White
- D) Red

295. U1C1L6:G59. What is a halyard?

- A) Shoulder board to which rank is attached
- B) Minority vote on a law in Congress.
- C) A rope or tackle used for hoisting or lowering, as for flags or sails.
- D) A small yard for animals held on boats.

296. U1C1L6:G60. T or F: When a flag is properly folded, only the blue field with stars will be visible.

- A) True
- B) False

297. U1C1L6:G61. When flying a pennant or another flag on the same halyard as the national flag, where is the national flag located?

- A) Always at the peak of the staff
- B) Always in the middle of all other flags
- C) Other flags should never be flown with the U.S. flag
- D) None of the above

298. U1C1L6:G62. Who in 1777 established the first stars and stripes flag of the U.S.?

- A) The first settlers of Plymouth Rock
- B) The Founding Fathers
- C) Betsy Ross
- D) The Continental Congress

299. (U1C1L6:V1) What is another word for the U.S. national flag?

- A) Union
- B) pennant
- C) Colors
- D) halyard

300. (U1C1L6:V2) What type of flag is described below?

a flag that is displayed or flown from an aircraft, ship, or boat as the symbol of nationality

- A) standard
- B) ensign

- C) garrison flag
- D) post flag
- E) storm flag

301. (U1C1L6:V3) What type of flag is described below?

type of flag flown on holidays and important occasions; 20 feet x 38 feet

- A) standard
- B) ensign
- C) garrison flag
- D) post flag
- E) storm flag

302. (U1C1L6:V4) Why would you fly a flag at "half-staff?"

- A) you never fly a flag at half-staff
- B) during bad weather to warn others
- C) during national holidays
- D) show respect for a deceased person

303. (U1C1L6:V5) What is a rope or tackle used for hoisting or lowering a flag?

- A) staff
- B) pennant
- C) ensign
- D) halyard

304. (U1C1L6:V6) What is a long, narrow flag tapering to a point or a swallowtail at the end?

- A) staff
- B) pennant
- C) ensign
- D) halyard

305. (U1C1L6:V7) What type of flag is described below?

type of flag used for everyday occasions; 10 feet by 19 feet

- A) standard
- B) ensign
- C) garrison flag
- D) post flag
- E) storm flag

306. (U1C1L6:V8) What is another word for flagpole?

- A) staff
- B) Colors
- C) ensign
- D) halyard

307. (U1C1L6:V9) Which term is interchangeable with "the Colors," and was formerly used for flags of mounted, motorized, and mechanized organizations?

- A) standard
- B) ensign
- C) garrison flag
- D) post flag
- E) storm flag

308. (U1C1L6:V10) What type of flag is described below?

type of flag flown in bad weather; 5 feet by 9 1/2 feet

- A) standard
- B) ensign
- C) garrison flag
- D) post flag
- E) storm flag

309. (U1C1L6:V11) What is the emblem on a flag symbolizing unity, such as the blue rectangle and stars on the U.S. flag?

- A) Union
- B) pennant
- C) Colors
- D) halyard

310. (U1C1L7:Q1) You and another Cadet won a trip and tickets to watch an international wrestling competition. The American wrestler in the heavyweight class lost a good match to a wrestler from another country. You know they will play that country's national anthem when they raise their flag at the awards ceremony. What should you do?

- A) Try to leave the arena before their national anthem is played.
- B) Stay for their national anthem, but turn your back to their flag, and talk with your friend.
- C) Set a good example of sportsmanship and respect by standing at attention and facing

their flag as it is raised.

D) Stay seated unless it is they play "The Star-Spangled Banner."

311. (U1C1L7:Q2) Which of the following is NOT a correct procedure for showing respect to ours and other friendly nation's national anthems?

A) When outdoors and in uniform, face the flag (or the source of the music if the flag is not visible), stand at attention, and render the hand salute while the music plays.

B) When outdoors and in civilian clothes, face the flag (or the source of the music if the flag is not visible), stand at attention, and place your hand over your heart.

C) When in a private vehicle on a military base, the vehicle should stop and the driver and passengers exit the vehicle and take the appropriate actions for being outside.

D) When indoors and under arms, stand at attention and salute while the national anthem or "To the Colors" is playing.

312. (U1C1L7:Q3) Which of the following is NOT true about "The Stars and Stripes Forever," our national march?

A) "The Stars and Stripes Forever" receives the same courtesies of respect as "The Star-Spangled Banner" and "To the Colors."

B) Just like our national anthem, our national march demonstrates the strength and power of patriotic music in the development of our national spirit.

C) John Phillips Sousa wrote "The Stars and Stripes Forever" on the steamer Teutonic, although he didn't put it on paper until he got to New York.

D) Like many patriotic songs, "The Stars and Stripes Forever" was an immediate hit. It is recognized as our national march in the United States Code of Federal Regulations.

313. (U1C1L7:G1) Define the term "anthems."

A) A refrain or chorus for a well-known song

B) Songs of gladness, praise, devotion, or patriotism

C) Songs written specifically to record a historical event

D) A folksong that captures the culture of a people

314. (U1C1L7:G2) Who wrote "The Star Spangled Banner?"

A) Francis Scott Key wrote it in 1814.

B) Martha Washington wrote it in 1777.

C) George Washington wrote it in 1789.

D) Mary Todd Lincoln wrote it in 1861.

315. (U1C1L7:G3) In what year did Congress declare "The Star Spangled Banner" the national anthem of the U.S.?

- A) In 1820; at the conclusion of the War of 1812
- B) In 1931; 117 years after it was written
- C) In 1812; the year it was written
- D) In 1901; almost a century after it was written

316. (U1C1L7:G4) What actions do you take if you are outdoors in uniform and you hear the national anthem?

- A) Stand at ease facing the flag or music and render the hand salute from the first note to the last.
- B) Face the flag, stand at attention, but do not salute from a distance.
- C) March in quick time toward the flag while saluting from the first note to the last.
- D) You face the flag or music, stand at attention, and render the hand salute from the first note to the last.

317. (U1C1L7:G5) T or F: If you are indoors and you hear the national anthem, you face the flag, stand at attention, and salute.

- A) True
- B) False

318. (U1C1L7:G6) T or F: On a military installation, all drivers must stop when the national anthem is played.

- A) True
- B) False

319. (U1C1L7:G7) Name the author and title of the national march of the U.S.

- A) John Philip Sousa's "The Stars and Stripes Forever"
- B) Frances Scott Keys' "Star Spangled Banner"
- C) Katherine Lee Bates' "America the Beautiful"
- D) John Philip Sousa's "Hands Across the Sea"

320. (U1C1L7:G8) What are the responsibilities of a driver who is in uniform on a military base when the driver hears the national anthem?

- A) The driver has no responsibilities as long as he or she remains in the car.
- B) The driver must pull to the side of the road, as if for a fire truck or ambulance.
- C) The driver must stop and stand until he or she thinks enough time has passed for the flag to be lowered.
- D) The driver must stop the vehicle, step out of the vehicle, face the flag or music, stand at attention, and salute until the last note is played.

321. (U1C1L7:G9) What are the responsibilities of a driver who is not in uniform on a military base when the driver hears the national anthem?

A) The driver must step out of the vehicle, face the flag or music, stand at attention, and place the right hand over the heart until the last note is played.

B) The driver must remain in the car, face the flag or music, and sit with good posture until the music ends.

C) The driver must pull to the side of the road, facing the car to the flag or music, and wait patiently for the music to end.

D) The driver has no obligations and may proceed to his or her destination.

322. (U1C1L7:G10) During an indoor ceremony, Cadets do not salute a flag unless they are under arms. Define the term "under arms."

A) Wearing shoulder boards or a class B uniform shirt.

B) Participating in a Color guard.

C) Carrying a weapon or equipment pertaining to a weapon.

D) Surrounded by others who are carrying sabers.

323. (U1C1L7:G11) What is the national march of the U.S.?

A) The 15-inch step

B) The 30-inch step

C) "Ruffles and Flourishes"

D) John Philip Sousa's "The Stars and Stripes Forever."

324. (U1C1L7:G12) A song already in a culture that becomes so popular that people claim it as a symbol for themselves and their nation is known as \_\_\_\_\_.

A) a jingle

B) a ballad

C) an anthem

D) a folksong

325. (U1C1L7:V1) Choose the word that best completes the sentence below.

National \_\_\_\_\_ are usually songs already in a culture that become so popular that the

people claim them as a symbol for themselves and their nation.

- A) under arms
- B) symbol
- C) anthems
- D) national march

326. (U1C1L7:V2) Choose the word that best completes the sentence below.

"The Stars and Stripes Forever" is recognized as the U.S. \_\_\_\_\_.

- A) under arms
- B) symbol
- C) anthems
- D) national march

327. (U1C1L7:V3) Choose the word that best completes the sentence below.

When you carry a weapon or the equipment pertaining to a weapon, you are considered \_\_\_\_\_.

- A) under arms
- B) symbol
- C) anthems
- D) national march

328. (U1C1L7:V4) Choose the word that best completes the sentence below.

Francis Scott Key, as a prisoner of war, watched the \_\_\_\_\_ of Baltimore, Maryland during the War of 1812. He wrote "The Star Spangled Banner" the next morning after seeing the American flag still standing.

- A) bombardment
- B) "The Star-Spangled Banner"
- C) symbol
- D) under arms

329. (U1C1L7:V5) Choose the word that best completes the sentence below.

Many people consider the national anthem of a country a \_\_\_\_\_ for themselves.



- A) bombardment
- B) "The Star-Spangled Banner"
- C) symbol
- D) under arms

330. (U1C1L7:V6) Choose the word that best completes the sentence below.

The national anthem for the United States is \_\_\_\_\_.

- A) bombardment
- B) "The Star-Spangled Banner"
- C) symbol
- D) under arms

331. (U1C1L8:Q1) You are the Rifle Team Commander. The vice-president of the United States is going to visit your school and you have been directed to have the Rifle Team prepare to give the gun salute, if local civic leaders allow the firing of blank rounds inside the city limits. You have six Cadets on the rifle team, and you will be giving the commands. During a gun salute, all six Cadets fire at the same time.

How many blank rounds should you request for your team?

- A) 19
- B) 21
- C) 114
- D) 126

332. (U1C1L8:Q2) You have been directed to go to the teacher's lounge to greet a guest speaker for career day, Lieutenant Colonel Jones, and to escort him back to the JROTC Department. Your instructor told you that he will be easy to spot because "He is 6-foot-eight, and should be in uniform." When you arrive at the teacher's lounge, you immediately spot LTC Jones but he is in civilian clothes.

You should walk up to him, \_\_\_\_\_, and say, "\_\_\_\_\_ I am here to escort you back to the JROTC Department. Please come with me."

- A) render a hand salute; Lieutenant Colonel Jones,
- B) render a hand salute; Sir, my name is Cadet (your name), and
- C) stand at attention; Lieutenant Colonel Jones,
- D) stand at attention; Colonel Jones, my name is Cadet (your name), and

333. (U1C1L8:Q3) Assuming the hand and arm are in the correct positions, which of the following is NOT part of the correct procedure for rendering a hand salute?

A) When wearing glasses and headgear with a visor, touch the tip of your right forefinger to that point on the glasses where the temple piece of the frame meets the right edge of your right brow.

B) When wearing glasses and headgear without a visor (or when uncovered), touch the tip of your right forefinger to that point on the glasses where the temple piece of the frame meets the right edge of your right brow.

C) When wearing headgear with a visor, place the tip of your right forefinger on the rim of the visor slightly to the right of your right eye.

D) When wearing headgear without a visor (or when uncovered), touch the tip of your right forefinger to the forehead near and slightly to the right of your right eyebrow.

334. (U1C1L8:Q4) Army JROTC Units compete for the following decorations: Merit Unit, Honor Unit, and Honor Unit with Distinction. The decorations are awarded based on the results of a formal inspection, and on standards of training and discipline during the school year. During the formal inspection, instead of skill competitions in land navigation and first aid, units are evaluated on drill and ceremonies, wear of the uniform, saluting, and displays of respect.

Choose the answer that best describes why these skills are evaluated.



A) These things are evaluated because they are easier to grade which makes it easier to identify the better units

B) These things are evaluated because they best represent the teamwork, esprit de corps, and respect the Cadets have in their unit

C) These things are evaluated because they take less time than competitions and

inspectors can inspect more units in less time

D) These things are evaluated because it takes the better part of a school year to learn them and they want to make sure everyone is performing them properly

335. (U1C1L8:G1) What is the purpose of a cannon salute?

- A) To honor civil or military officials from the U.S. or foreign countries.
- B) To memorialize a military official upon his or her death.
- C) To alert drivers that a funeral cavalcade will soon be moving.
- D) To honor non-commissioned and petty officers.

336. (U1C1L8:G2) T or F: The President and Vice President receive a 21-gun salute as a matter of courtesy.

- A) True
- B) False

337. (U1C1L8:G3) T or F: You must render the salute to all commissioned and warrant officers as well as non-commissioned and petty officers.

- A) True
- B) False

338. (U1C1L8:G4) T or F: You should not render a salute on buses or trains, in stores or theatres, while indoors, or while both parties are in civilian clothes.

- A) True
- B) False

339. (U1C1L8:G5) Name three instances under which you must salute.

- A) When you are in uniform and you hear the national anthem; when the colors pass you; during official greetings.
- B) During official greetings; during reveille and retreat; during the rendering of honors.
- C) When first uncasing or later when casing the colors; when pledging allegiance outdoors and in uniform; when reporting.
- D) All of the above.

340. (U1C1L8:G6) \_\_\_\_\_ is requesting and obtaining permission to speak to a senior officer or being notified that a senior officer wants to speak with you.

- A) "Requesting"
- B) "Reporting"
- C) "Chain of command"

D) "Saluting"

341. (U1C1L8:G7) When is it appropriate to call a room to attention?

- A) When those in the room should be silent.
- B) When announcements are made over a public address system.
- C) When the battalion Cadet executive officer enters the room.
- D) When an officer enters the office for the first time each day.

342. (U1C1L8:G8) Define "esprit de corps."

- A) The department of the military in charge of Marine units.
- B) A military courtesy given to people of senior rank and status.
- C) The honor given a flag when casing or uncasing the Colors.
- D) The common spirit or feeling of pride found in members of a group and inspiring enthusiasm, devotion, and a strong regard for the honor of the group.

343. (U1C1L8:G9) Explain the "position of honor."

- A) Sitting in the center of a head table at a military social function.
- B) A military courtesy of keeping people of senior rank or status to your right while walking or sitting.
- C) The position a senior ranking officer takes as the first person in a receiving line.
- D) Presenting oneself to a person of senior rank.

344. (U1C1L8:G10) T or F: The position of honor dictates that those of lower rank walk, sit, or ride to the left of those with senior rank.

- A) True
- B) False

345. (U1C1L8:G11) What is a "mess" in military jargon?

- A) A group of persons in the military who regularly eat meals together or the place where such meals are served.
- B) The results of a badly executed drill maneuver.
- C) Presenting oneself to a person of higher rank.
- D) A drum and bugle salute, usually used to honor officials.

346. (U1C1L8:G12) What does it mean to "uncase" the Colors?

- A) To display the Colors at half mast.
- B) To remove the Colors from a display case for use by a Color Guard.
- C) Removing the case or covering from the Colors that are attached to a staff.

D) To check the proper protocol for placement of the Colors in relation to other flags, such as when displaying it at the United Nations.

347. (U1C1L8:G13) How are warrant officers addressed?

- A) As "Mister" or "Miss"
- B) As "Chief" or "Madame"
- C) As "Captain"
- D) As "Boss"

348. (U1C1L8:G14) In military jargon, what does "reporting" mean, as in "reporting for duty"?

- A) Acting as the Cadet information officer.
- B) Adhering to an honor code by reporting those who lie, cheat, or steal.
- C) "Reporting" means presenting oneself to a person of senior rank.
- D) Rendering the hand salute.

349. (U1C1L8:G15) What is the command given during a formation to execute a salute?

- A) "Formation, arms"
- B) "Present, arms"
- C) "Salute, arms"
- D) "Command, arms"

350. (U1C1L8:G16) What is the primary purpose of a hand salute today?

- A) To distinguish officers from enlisted personnel.
- B) To reveal that you are not holding a weapon.
- C) To show non-military respect for their civilian positions.
- D) To indicate respect for those in positions of authority.

351. (U1C1L8:G18) Explain the history of the hand salute.

- A) In ancient times, a salute shielded the eyes so one could see one's opponent clearly.
- B) In ancient times, a salute identified the members of one's tribe.
- C) In ancient times, a salute was rendered only to members of the opposite sex.
- D) In ancient times, a salute indicated that you were not holding a weapon in your hand.

352. (U1C1L8:G19) T or F: Secretaries of the Army, Air Force, and Navy, and Generals of the Army and Air Force are honored with a 21-gun salute.

- A) True
- B) False

353. (U1C1L8:G20) What are "ruffles and flourishes"?

- A) Fringe on the edge of flags.
- B) A nickname given the gold braid on an officer's dress blue hat.
- C) A drum and bugle salute, usually used to honor military or civilian officials.
- D) Another name for a 21-gun salute.

354. (U1C1L8:G21) What does it mean when a cannon is said to be "self-propelled"?

- A) You push it yourself into the proper position.
- B) It has the ability to sight itself on a target.
- C) It has wheels and can be moved by a tow vehicle.
- D) It has the ability within itself to move.

355. (U1C1L8:G22) A common courtesy when an officer enters the office or classroom for the first time of the day is to \_\_\_\_\_.

- A) Stand up
- B) Stand and salute
- C) Order "post"
- D) Call the room to attention

356. (U1C1L8:G23) How are gun salutes rendered to the President and Vice President?

- A) The President receives a 19-gun salute, while the vice president receives a 17-gun salute.
- B) The President receives a 21-gun salute, while the vice president receives a 19-gun salute.
- C) The President receives a 21-gun salute, while the vice president receives a 17-gun salute.
- D) The President and the vice president both receive 21-gun salutes.

357. (U1C1L8:G17) A \_\_\_\_\_ salute is used to honor civil or military officials from the U.S. or foreign countries.

- A) Cannon
- B) Gun
- C) Hand
- D) None of the above

358. (U1C1L8:V1) What is the definition of the word "customs"?

- A) The common spirit or feeling of pride found in the members of a group and inspiring enthusiasm, devotion, and strong regard for the honor of the group.
- B) A long established practice followed as a matter of course among people, oftentimes considered as an unwritten law or repeated practice.
- C) To have the ability within itself to move.
- D) To attire with a certain degree of uniformity; an appearance appropriate or peculiar to a particular time.

359. (U1C1L8:V2) What is the definition of the word "dress"?

- A) Signs or forms of exchange used to greet or to show respect and recognition.
- B) A long established practice followed as a matter of course among people, oftentimes considered as an unwritten law or repeated practice.
- C) The passing down of elements of a culture (such as knowledge, beliefs, or customs) from one generation to another.
- D) To attire with a certain degree of uniformity; an appearance appropriate or peculiar to a particular time.

360. (U1C1L8:V3) What is the definition of the word "traditions"?

- A) The common spirit or feeling of pride found in the members of a group and inspiring enthusiasm, devotion, and strong regard for the honor of the group.
- B) A long established practice followed as a matter of course among people, oftentimes considered as an unwritten law or repeated practice.
- C) The passing down of elements of a culture (such as knowledge, beliefs, or customs) from one generation to another.
- D) To attire with a certain degree of uniformity; an appearance appropriate or peculiar to a particular time.

361. (U1C1L8:V4) What is the definition of the word "esprit de corps"?

- A) The common spirit or feeling of pride found in the members of a group and inspiring enthusiasm, devotion, and strong regard for the honor of the group.
- B) To remove a hat or other headgear; to be bareheaded or without a cover.
- C) The passing down of elements of a culture (such as knowledge, beliefs, or customs) from one generation to another.
- D) To attire with a certain degree of uniformity; an appearance appropriate or peculiar to a particular time.

362. (U1C1L8:V5) What is the definition of the word "salutes"?

- A) A military courtesy of usually keeping senior officers to your right while walking or

sitting.

- B) Acts of politeness of gracious manners; the use of polite gestures or remarks.
- C) Signs or forms of exchange used to greet or to show respect and recognition.
- D) A drum and bugle salute, usually to honor military or civil officials.

363. (U1C1L8:V6) What is the definition of the word "self-propelled"?

- A) To have the ability within itself to move.
- B) Acts of politeness of gracious manners; the use of polite gestures or remarks.
- C) Signs or forms of exchange used to greet or to show respect and recognition.
- D) A drum and bugle salute, usually to honor military or civil officials.

364. (U1C1L8:V7) What is the definition of the word "ruffles and flourishes"?

- A) To have the ability within itself to move.
- B) Acts of politeness of gracious manners; the use of polite gestures or remarks.
- C) Presenting oneself to a senior.
- D) A drum and bugle salute, usually to honor military or civil officials.

365. (U1C1L8:V8) What is the definition of the word "courtesies"?

- A) To have the ability within itself to move.
- B) Acts of politeness of gracious manners; the use of polite gestures or remarks.
- C) A group of persons, usually in the military, who regularly eat meals together; the place where such meals are served.
- D) Removing the case from the Colors that are attached to a staff.

366. (U1C1L8:V9) What is the definition of the word "mess"?

- A) Removing the case from the Colors that are attached to a staff.
- B) A military courtesy of usually keeping senior officers to your right while walking or sitting.
- C) Presenting oneself to a senior.
- D) A group of persons, usually in the military, who regularly eat meals together; the place where such meals are served.

367. (U1C1L8:V10) What is the definition of the word "uncasing"?

- A) Removing the case from the Colors that are attached to a staff.
- B) A military courtesy of usually keeping senior officers to your right while walking or sitting.
- C) Presenting oneself to a senior.
- D) A group of persons, usually in the military, who regularly eat meals together; the place where such meals are served.



368. (U1C1L8:V11) What is the definition of the word "reporting"?

- A) Removing the case from the Colors that are attached to a staff.
- B) To remove a hat or other headgear; to be bareheaded or without a cover.
- C) Presenting oneself to a senior.
- D) A group of persons, usually in the military, who regularly eat meals together; the place where such meals are served.

369. (U1C1L8:V12) What is the definition of the word "position of honor"?

- A) Signs or forms of exchange used to greet or to show respect and recognition.
- B) A military courtesy of usually keeping senior officers to your right while walking or sitting.
- C) Presenting oneself to a senior.
- D) A group of persons, usually in the military, who regularly eat meals together; the place where such meals are served.

370. (U1C1L8:V13) What is the definition of the word "uncovered"?

- A) Presenting oneself to a senior.
- B) A military courtesy of usually keeping senior officers to your right while walking or sitting.
- C) A group of persons, usually in the military, who regularly eat meals together; the place where such meals are served.
- D) To remove a hat or other headgear; to be bareheaded or without a cover.

371. (U1C1L9:Q1) At the beginning of the Staff Meeting, the Executive Officer announced, "We'll begin with updates on personnel, operations, logistics and civil affairs. Next, we'll hear from the Command Sergeant Major, and then we'll conclude with updates from the aviation and chemical officers."

What is the staff order for the meeting?

- A) Coordinating, Special, Special
- B) Coordinating, Personal, Special
- C) Special, Coordinating, Personal
- D) Personal, Special, Coordinating

372. (U1C1L9:Q2) You are a member of the Battalion Staff. Your job is to direct, coordinate and supervise the coordinating and special staffs, and to support the Commander's personal staff if needed.

Who are you?

- A) The Battalion Commander
- B) The Battalion Executive Officer (XO)
- C) The Battalion Operations Officer
- D) The Battalion Logistics Officer

373. (U1C1L9:Q3) The sequence of command in staff actions is a nine-step procedure the commanders and their staffs use to make decisions.

Of the following, which is not one of the benefits of using the sequence?

- A) Commanders are assured that they are making a decision based on all available information.
- B) Staff officers are better prepared because they can anticipate the needs of each step.
- C) Commanders are assured that they are in control of the situation and can ignore outside influences.
- D) The Staff is able to plan an action before they receive a mission.

374. (U1C1L9:Q4) Study the table and select the option (A-D) that completes the Sequence of Command and Staff Actions in the correct order.

Sequence of Command

- Step 1. Mission
- Step 2. Information Available
- Step 3. Planning Guidance
- Step 4. Staff Estimates
- Step 5.
- Step 6. Preparation of Plans or Orders
- Step 7.
- Step 8. Publication of Plans or Orders
- Step 9.

Staff Actions:

- A. Commander's Estimate and Decision
- B. Begin next sequence
- C. Command and Staff Supervision
- D. Approval
- E. Issue Missions

- A) Step 5. = A; Step 7. = D; Step 9. = C
- B) Step 5. = B; Step 7. = A; Step 9. = E

- C) Step 5. = D; Step 7. = E; Step 9. = C
- D) Step 5. = E; Step 7. = B; Step 9. = A

375. (U1C1L9:G1) The Battalion XO directs, coordinates, and supervises the efforts of the coordinating and \_\_\_\_\_ staffs.

- A) Distaff
- B) Controlling
- C) Special
- D) Subordinate

376. (U1C1L9:G2) T or F: Battalions are the highest level at which the U.S. Army authorizes a staff.

- A) True
- B) False

377. (U1C1L9:G3) \_\_\_\_\_ is a group of individuals at a particular level or grade in an organization.

- A) A rank
- B) An echelon
- C) A file
- D) A strata

378. (U1C1L9:G4) \_\_\_\_\_ is the authority that a commander lawfully exercises over subordinates by virtue of rank or assignment.

- A) Rank
- B) Grade
- C) Command
- D) Superiority

379. (U1C1L9:G5) T or F: Commanders can delegate authority and responsibilities to their subordinates.

- A) True
- B) False

380. (U1C1L9:G6) What are four command functions a commander should not delegate?

A) Developing concepts for estimates and plans; processing and disseminating their guidance and concepts; ensuring coordination of the effort of the command; and supervising

the execution of decisions.

B) Developing plans; assigning personnel; disciplining personnel; writing after-action reviews.

C) Developing concepts for estimates and plans; processing and disseminating their guidance and concepts; ensuring coordination of the effort of the command; and supervising and micromanaging every aspect of the implementation.

D) Developing the budget; processing and disseminating their guidance and concepts; ensuring coordination of the effort of the command; and supervising the execution of decisions.

381. (U1C1L9:G7) Leaders "disseminate" information to subordinates. What does "disseminate" mean?

A) To put complex ideas into simple language so they are easily understood by subordinates.

B) To use informal channels such as grapevine communications to spread information.

C) To spread or disperse.

D) To control the flow of information.

382. (U1C1L9:G8) What are the three groups of staff officers?

A) Communications staff, special staff, and personal staff

B) Coordinating staff, special staff, and personal staff

C) Coordinating staff, selective staff, and personal staff

D) Coordinating staff, special staff, and private staff

383. (U1C1L9:G9) \_\_\_\_\_ officers are the principal staff assistants to the commander and each specializes in an S-1 through S-5 (or a combined) function.

A) Special staff

B) Coordinating staff

C) Personal staff

D) Principal staff

384. (U1C1L9:G10) \_\_\_\_\_ staff officers assist the commander in professional, technical, and other functional areas of interest in the command.

A) Special

B) Temporary

C) Technical

D) Functional

385. (U1C1L9:G11) Which of the following groups are special staff personnel?

A) Signal, maintenance, logistics readiness, aviation, chemical, provost, public affairs,

chaplain, and surgeon officers

- B) Personnel officer, command sergeant major, aviation, chemical, and provost
- C) Operations, executive officer, and drill team captains
- D) Security, judge advocate general, and rifle team captains

386. (U1C1L9:G12) \_\_\_\_\_ staff work under the immediate control of the commander and include such members as the command sergeant major, and at higher levels, the inspector general and staff judge advocate.

- A) Personal
- B) Special
- C) Immediate
- D) Public

387. (U1C1L9:G13) The \_\_\_\_\_ is responsible for coordinating, directing, and supervising the efforts of the coordinating and special staffs.

- A) Company Commander
- B) Executive Officer (XO)
- C) Adjutant
- D) Special Projects Officer

388. (U1C1L9:G14) What are the two channels of information within a command?

- A) Command channels and unit channels
- B) Control channels and staff channels
- C) Staff channels and subordinate channels
- D) Command channels and staff channels

389. (U1C1L9:G15) \_\_\_\_\_ channels transmit all orders and instructions to subordinate units.

- A) Designated
- B) Delegated
- C) Control
- D) Command

390. (U1C1L9:G16) T or F: A staff officer of a higher headquarters has no authority over the staff of a subordinate headquarters.

- A) True
- B) False

391. (U1C1L9:G17) What are the three regular methods of voting in meetings?

- A) By voice, by rising, or by show of hands
- B) By ballot, by consensus, by majority
- C) By "yea", by "nay", and by abstention
- D) By delegate, by individual, by party

392. (U1C1L9:V1) Coordinating Staff

### Vocabulary Matching - Question 1

1. coordinating staff	A. decision on how to proceed
2. course of action	B. principal staff assistants to the commander
3. echelon	C. assists the commander in areas of interest in the command
4. personal staff	D. officers who work under the immediate control of the commander
5. special staff	E. an organizational level of importance

- A)
- B)
- C)
- D)
- E)

393. (U1C1L9:V2) Course of Action

## Vocabulary Matching - Question 2

	A. decision on how to proceed
1. coordinating staff	B. principal staff assistants to the commander
2. course of action	C. assists the commander in areas of interest in the command
3. echelon	D. officers who work under the immediate control of the commander
4. personal staff	E. an organizational level of importance
5. special staff	

- A)
- B)
- C)
- D)
- E)

394. (U1C1L9:V3) Echelon

## Vocabulary Matching - Question 3

- |                       |   |
|-----------------------|---|
|                       | A. decision on how to proceed                                     |
| 1. coordinating staff | B. principal staff assistants to the commander                    |
| 2. course of action   | C. assists the commander in areas of interest in the command      |
| 3. echelon            | D. officers who work under the immediate control of the commander |
| 4. personal staff     | E. an organizational level of importance                          |
| 5. special staff      |   |

- A)
- B)
- C)
- D)
- E)

395. (U1C1L9:V4) Personal Staff



## Vocabulary Matching - Question 4

- |                       |   |
|-----------------------|---|
|                       | A. decision on how to proceed                                     |
| 1. coordinating staff | B. principal staff assistants to the commander                    |
| 2. course of action   | C. assists the commander in areas of interest in the command      |
| 3. echelon            |   |
| 4. personal staff     | D. officers who work under the immediate control of the commander |
| 5. special staff      | E. an organizational level of importance                          |

- A)
- B)
- C)
- D)
- E)

396. (U1C1L9:V5) Special Staff

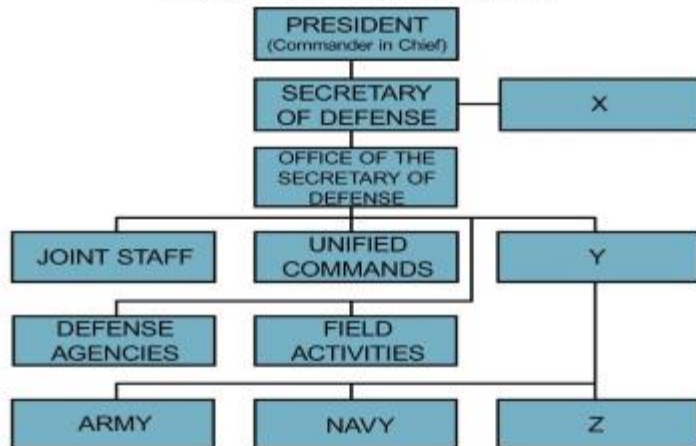
## Vocabulary Matching - Question 5

	A. decision on how to proceed
1. coordinating staff	B. principal staff assistants to the commander
2. course of action	C. assists the commander in areas of interest in the command
3. echelon	D. officers who work under the immediate control of the commander
4. personal staff	E. an organizational level of importance
5. special staff	

- A)
- B)
- C)
- D)
- E)

397. (U1C2L1:Q1) Review the chart and select the option (A-D) that correctly completes the Chain of Command flow chart.

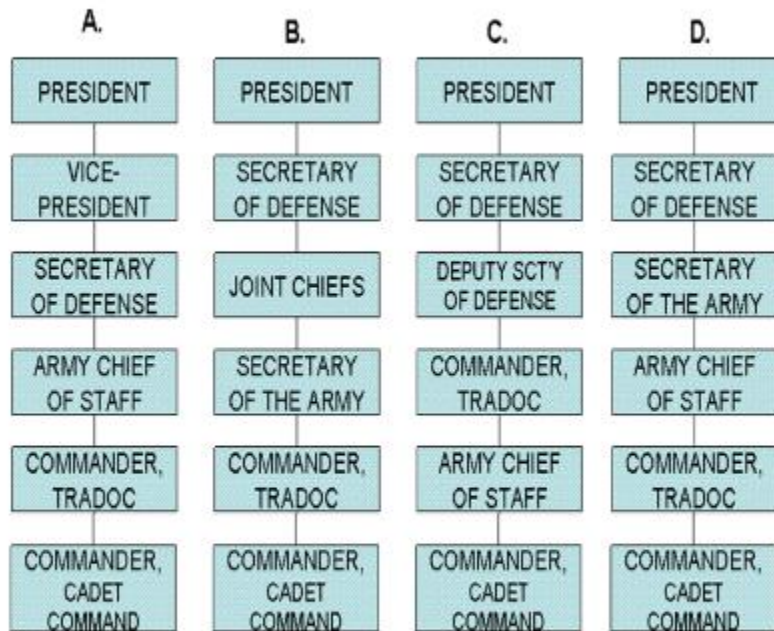
## Chain of Command



- A) X = Assistant Secretary of Defense  
 Y = Military Departments  
 Z = Marine Corps
- B) X = Deputy Secretary of Defense  
 Y = Military Departments  
 Z = Air Force
- C) X = Under Secretary of Defense  
 Y = Army Chief of Staff  
 Z = Air Force
- D) X = Chairman of the Joint Chiefs of Staff  
 Y = Under Secretary of Defense  
 Z = Special Operations

398. (U1C2L1:Q3) Analyze the charts and decide which one best represents your chain of command as a JROTC Cadet.

### CADET CHAIN OF COMMAND



- A) A
- B) B
- C) C
- D) D

399. (U1C2L1:Q4) You are the Commander-in-Chief (CINC) of our Armed Forces in one of the nine geographical areas of the world. You have identified an enemy threat, developed a plan to combat that threat, and organized your forces to execute your plan. Even though you haven't received permission to attack from the Department of Defense, your intelligence (which is about 97% sure) indicates that the best time to execute your plan is now.

What prevents you from proceeding with your plan?

A) Nothing. You are the CINC of all of our Armed Forces in this area of the world, and you should order your forces to attack.

B) Nothing. You have a good plan, good forces, and intelligence has shown that your plan will probably be successful.

C) You have not received permission from the responsible civilian official who has the authority to make that decision.

D) The Chairman of the JCS hasn't commanded you to execute your plan.

400. (U1C2L1:G1) What executive department is responsible for the nation's defense force?

A) The Department of Defense

B) The Department of State

C) The Department of Homeland Security

D) The Department of the Treasury

401. (U1C2L1:G2) What is the mission of the Department of Defense?

A) Strategic and tactical division of combatant forces.

B) To provide the military forces needed to deter war and protect the security of the United States.

C) The operation of combatant forces under unified command.

D) Research and development on effective military tactics and machinery.

402. (U1C2L1:G3) What is the role of the Secretary of Defense and how is he or she appointed?

A) The Secretary is the principal defense policy advisor to the President. He or she is appointed by the President but subject to Senate approval.

B) The principal defense policy advisor to the President is appointed by popular vote.

C) The principal defense policy advisor to the Senate and Congress is appointed by popular vote.

D) The principal economic advisor to the President is appointed by the President and confirmed by the Senate.

403. (U1C2L1:G4) Name the order of the presidential succession through the Secretary of Defense.

A) Speaker of the House; Vice President; President Pro Tempore of the Senate; Secretary of State; Secretary of Treasurer; Secretary of Defense

B) Speaker of the House; Vice President; President Pro Tempore of the Senate; Secretary of State; Secretary of Commerce; Secretary of Defense

C) Vice President; Speaker of the House; President Pro Tempore of the Senate; Secretary of State; Secretary of Treasury; Secretary of Defense

D) Speaker of the House; Vice President; President Pro Tempore of the Senate; Secretary of State; Chairman of the Joint Chiefs of Staff; Secretary of Defense

404. (U1C2L1:G5) Who constitutes the collective body of the Joint Chiefs of Staff?

A) The President; Vice-Chairman; Chief of Staff of the Army; Chief of Naval Operations; Chief of Staff of the Air Force; and the Commandant of the Marine Corps.

B) The President; Vice-Chairman; Chief of Staff of the Army; Chief of Naval Operations; Chief of Staff of the Air Force; and the Secretary of Defense.

C) The President; Vice-Chairman; Chief of Staff of the Army; Chief of Naval Operations; Chief of Staff of the Air Force; and the Secretary of State.

D) The Chairman; Vice-Chairman; Chief of Staff of the Army; Chief of Naval Operations; Chief of Staff of the Air Force; and the Commandant of the Marine Corps.

405. (U1C2L1:G7) What are the main responsibilities of the Joint Chiefs of Staff?

A) To keep peace in the U.S. and in U.S. territories.

B) To identify other countries that could benefit from democratic self-rule.

C) Strategic and tactical direction of combatant forces; operation of combatant forces under unified commands; integration of combatant forces; research and development.

D) None of the above.

406. (U1C2L1:G8) In military terminology, what is a "theater"?

A) A graphic organizer or table top map for charting troop movements.

B) A panoramic view of the battlefield as seen from an aircraft or satellite picture.

C) A large geographic area (including its land, sea, and air) in which active military operations are coordinated and conducted.

D) A designated area for performance to entertain troops.

407. (U1C2L1:G9) Large scale or global planning and conduct of military strategy, movements, and/or operations essential to the effective conduct of war is called \_\_\_\_\_.

A) Organizational planning

B) Strategic planning

C) Theatre planning

D) Special operations

408. (U1C2L1:G10) T or F: The Joint Chiefs of Staff have the executive authority to command combatant forces.

A) True

B) False

409. (U1C2L1:G11) In the U.S., who has the power to raise and support armies and to declare war?

A) Secretary of State

- B) President
- C) Senate
- D) Congress

410. (U1C2L1:G14) The executive department responsible for the nation's defense force is \_\_\_\_\_.

- A) Department of the Interior
- B) Department of State
- C) Department of Defense
- D) Department of Homeland Security

411. (U1C2L1:G15) T or F: The appointment of the Secretary of Defense is solely at the discretion of the President.

- A) True
- B) False

412. (U1C2L1:G16) The Vice President is second in succession to the President. Define "succession."

- A) The order of persons next in line for an office or rank that is held by another.
- B) The person most likely to be voted into office if the President dies.
- C) The person most likely to be successful in a job.
- D) None of the above.

413. (U1C2L1:G17) What entity in the U.S. has the power and authority to raise and support armies and declare war?

- A) President
- B) Congress
- C) Senate
- D) Secretary of Defense

414. (U1C2L1:G18) The Department of \_\_\_\_\_ is responsible for the nation's defense force.

- A) State
- B) Homeland Security
- C) Defense
- D) National Guard

415. (U1C2L1:G19) Whose mission is it to provide the military forces needed to deter war and protect the security of the United States?

- A) The Department of Homeland Security
- B) The various state National Guards
- C) The Federal Bureau of Investigation
- D) The Department of Defense

416. (U1C2L1:G20) Who is the principal defense policy advisor to the President, and how is the advisor appointed?

- A) The National Security Advisor is appointed by the President.
- B) The Secretary of Defense is appointed by the President but subject to Senate approval.
- C) The chairman of the Joint Chiefs of Staff is promoted to the position.
- D) The Secretary of the Department of Homeland Security is approved by the Senate.

417. (U1C2L1:G21) What U.S. agency is headquartered in the Pentagon?

- A) The U.S. Department of State
- B) The Department of Defense
- C) The Department of Homeland Security
- D) The U.S. Army

418. (U1C2L1:G22) A large geographic area (including land, sea, and air) in which active military operations are coordinated and conducted is called a \_\_\_\_\_.

- A) Theater
- B) Combat zone
- C) Area of operations or AO
- D) AAMO, short for area of active military operations

419. (U1C2L1:G23) What is "strategic planning" in the military?

- A) A long range plan for deployment of a military unit.
- B) Large scale or global planning and conduct of military strategy, movements, and/or operations essential to the effective conduct of war.
- C) A plan designed to display strength and thereby deter war.
- D) Air Force plan made by the U.S. Air Force Strategic Lift Command.

420. (U1C2L1:G24) Explain the chain-of-command used to command combatant forces during times of war.

- A) The chain of command runs from the President to the Combatant Forces Commander.



B) The President directs the chairman of the Joint Chiefs who directs the field commander.

C) The chain of command runs from the Secretary of Defense to the Joint Chiefs to the field commanders.

D) The chain of command runs from the president, through the Secretary of Defense, to the military generals of the Unified Combatant Commands.

421. (U1C2L1:G25) T or F: The Joint Chiefs of Staff have the authority to command combatant forces.

A) True

B) False

422. (U1C2L1:G26) In the U.S., the \_\_\_\_\_ has the power to raise and support armies and to declare war.

A) U.S. House of Representatives

B) President

C) Secretary of Defense

D) Congress

423. (U1C2L1:F1) The Army JROTC is part of which government agency?

A) Department of Justice

B) Department of Finance

C) Department of Defense

D) Department of Education

424. (U1C2L1:V1) Operational Commands

## Vocabulary Matching - Question 1

1. operational  
commands

A. relating to large-scale or  
global planning and  
military operations

2. specified

B. describes an action or plan  
to help achieve goals

3. strategic

C. large geographical area  
for military operations

4. tactical

D. to state explicitly or in detail

5. theater

E. commands performing the  
primary mission of the service  
as distinguished from support  
commands

- A)
- B)
- C)
- D)
- E)

425. (U1C2L1:V2) Specified

## Vocabulary Matching - Question 2

1. operational  
commands

2. specified

3. strategic

4. tactical

5. theater

A. relating to large-scale or  
global planning and  
military operations

B. describes an action or plan  
to help achieve goals

C. large geographical area  
for military operations

D. to state explicitly or in detail

E. commands performing the  
primary mission of the service  
as distinguished from support  
commands

- A)
- B)
- C)
- D)
- E)

426. (U1C2L1:V3) Strategic

## Vocabulary Matching - Question 3

1. operational  
commands

A. relating to large-scale or  
global planning and  
military operations

2. specified

B. describes an action or plan  
to help achieve goals

3. strategic

C. large geographical area  
for military operations

4. tactical

D. to state explicitly or in detail

5. theater

E. commands performing the  
primary mission of the service  
as distinguished from support  
commands

- A)
- B)
- C)
- D)
- E)

427. (U1C2L1:V4) Tactical

## Vocabulary Matching - Question 4

- |                         |  |
|-------------------------|--|
| 1. operational commands | A. relating to large-scale or global planning and military operations                            |
| 2. specified            | B. describes an action or plan to help achieve goals   |
| 3. strategic            | C. large geographical area for military operations   |
| 4. tactical             | D. to state explicitly or in detail  |
| 5. theater              | E. commands performing the primary mission of the service as distinguished from support commands |

- A)
- B)
- C)
- D)
- E)

428. (U1C2L1:V5) Theater

## Vocabulary Matching - Question 5

1. operational commands

A. relating to large-scale or global planning and military operations

2. specified

B. describes an action or plan to help achieve goals

3. strategic

C. large geographical area for military operations

4. tactical

D. to state explicitly or in detail

5. theater

E. commands performing the primary mission of the service as distinguished from support commands

- A)
- B)
- C)
- D)
- E)

429. (U1C2L2:Q1) Another Cadet made this poster of the Army Branches. What would you tell her to make the chart accurate?

Army Branches:

Combat Arms (CA):

Infantry

Armor

Field Artillery (FA)

Air Defense Artillery (ADA)

MP Corps

Corps of Engineers

Combat Support (CS):  
Corps of Engineers  
Chemical Corps  
Signal Corps  
Aviation  
Military Intelligence

Combat Service Support (CSS):  
Adjutant General  
Corps of Engineers  
Finance Corps  
Quartermaster Corps  
Signal, Chemical, and MP Corps  
Ordnance Corps  
Transportation Corps  
Army Medical Department  
Chaplains

- A) Remove "Corps of Engineers" from the CA and CSS branches
- B) Switch "MP Corps" in CA with "Aviation" in CS
- C) Switch "Air Defense Artillery" in CA with "Signal Corps" in CS
- D) Remove "Signal Corps, Chemical Corps, and MP Corps" from the CSS branch

430. (U1C2L2:Q2) The Active Army contributes in peacetime to the nation's welfare through domestic involvement.

Which of the following actions does NOT represent a domestic Army mission during peacetime?

- A) An Army unit provides meals and clean water to victims of a hurricane.
- B) An Engineer unit builds sandbag walls to stop floodwaters from reaching homes in a community.
- C) A Military Police unit assists a local police force maintain order after a peaceful protest turned into a riot.
- D) A Finance unit provides personnel to run a bank during a strike of bank tellers.

431. (U1C2L2:Q3) The \_\_\_\_\_ authorizes the strength of the Active (or Regular) Army.

- A) Department of Defense
- B) Congress
- C) President of the United States
- D) Office of Budget Management

432. (U1C2L2:Q4) Our active Army is organized in accordance with the U. S. Constitution, the National Security Act of 1947 and it's Amendments of 1949, and the Army Organization Act of 1950.

If a friend of yours wants to research the Office of the Secretary of Defense, which act would you tell him to research?

- A) An amendment to the U. S. Constitution
- B) The National Security Act of 1947
- C) The Amendments to the National Security Act of 1949
- D) The Army Organization Act of 1950.

433. (U1C2L2:G1) Name the three components that make up the U.S. Army.

- A) Active Army, the reserve components, and Department of Defense workers
- B) Active Army, the reserve components, and the Department of the Army civilian work force
- C) Active Army, Air National Guard, and the reserve components
- D) Officers, Enlisted personnel, and intelligence operatives

434. (U1C2L2:G2) Name the two components of the reserves.

- A) The Army National Guard and the U.S. Army Reserves
- B) Officers and Enlisted Personnel
- C) Retired and Active Duty
- D) The Air National Guard and the Army Reserves

435. (U1C2L2:G3) What is the purpose of retaining reserve components of the U.S. Army?

- A) To employ former JROTC Cadets as qualified personnel to be available for active duty in time of war, national emergency, or at other times as directed by national security requirements.
- B) To protect the U.S. when the regular Army is deployed abroad in time of war, national emergency, or at other times as directed by national security requirements.
- C) To provide trained units and qualified personnel to be available for active duty in time of war, national emergency, or at other times as directed by a governor of a state.
- D) To provide trained units and qualified personnel to be available for active duty in time of war, national emergency, or at other times as directed by national security requirements.

436. (U1C2L2:G4) T or F: The Army contributes in peacetime to the nation's welfare through domestic involvement, but the scope of that involvement is limited by federal law.

- A) True



B) False

437. (U1C2L2:G5) In military jargon, what does "CONUS" stand for?

- A) Continental United States
- B) Contained on U.S. soil
- C) Coordinated through the U.S.
- D) Continuous United States

438. (U1C2L2:G6) The Infantry, Armor, Field Artillery, Air Defense Artillery, Aviation, and the Corps of Engineers are the six branches of \_\_\_\_\_ in the Army.

- A) Management
- B) Intelligence
- C) Reserves
- D) Combat Arms

439. (U1C2L2:G7) What does "FORSCOM" stand for in military jargon, and where is it located?

- A) First Order Response on Command, located in Fort Irwin, California
- B) Force Satellite Communications, located in Utah
- C) Forces Command, located at Fort Bragg, North Carolina
- D) Commandant of Forces at Fort Collins, Colorado

440. (U1C2L2:G8) What does "TRADOC" stand for in Army jargon, and where is it located?

- A) Tradition of Command, located in Fort Leavenworth, Kansas.
- B) Training and Delivery on Command, located in Fort Carson, Colorado.
- C) Training and Doctrine Command, located in Fort Eustis, Virginia.
- D) Training, Attitude, and Decision Command, located in Fort Wayne, Indiana.

441. (U1C2L2:G9) What Army command controls all the combat and support units at installations throughout the U.S.?

- A) FORSCOM, or Forces Command
- B) USCOM, or U.S. Command
- C) TRADOC, or Training and Doctrine Command
- D) SUPCOM, or Support and Combat Command

442. (U1C2L2:G10) Define "avionics."

- A) A nickname for aviators, a "flyboy."
- B) The term for a female aviator.
- C) A shorthand term for aviation electronics.

D) Nicknames that aviators give one another for use in radio transmissions while they are aloft.

443. (U1C2L2:G11) Which of the following is NOT one of the six combat arms branches in the army?

- A) Field Artillery
- B) Aviation
- C) Infantry
- D) Military Police

444. (U1C2L2:G12) What branches of the U.S. Army are usually directly involved in the conduct of actual fighting?

- A) Combat Service Support branches
- B) Military Police
- C) Judge Advocate General (JAG)
- D) Combat Arms

445. (U1C2L2:G13) The Special Forces and Civil Affairs branches of the Army are non-accession branches. Define "non-accession."

- A) The policy or practice of not accepting personnel directly from non-traditional sources.
- B) Soldiers in these branches are promoted in unusual ways, such as battlefield commissions.
- C) The policy or practice of not accepting personnel directly from traditional officer or enlisted entrance sources.
- D) The policy or practice of accepting personnel directly from traditional officer or enlisted entrance sources.

446. (U1C2L2:G14) What branch of the Army accomplishes missions of unconventional warfare, foreign internal defense, direct action, strategic reconnaissance, and counterterrorism?

- A) Navy Seals
- B) Special Forces
- C) Aviation
- D) Military Police Investigators

447. (U1C2L2:G15) What is the oldest branch of the U.S. Armed Forces?

- A) U.S. Navy
- B) U.S. Army

- C) U.S. Marines
- D) U.S. Air Force

448. (U1C2L2:G16) The three components that make up the U.S. Army are the Active Army, the Army Reserves and \_\_\_\_\_.

- A) Department of the Army Civilian Workforce
- B) Army National Guard
- C) Army Ready Reserve
- D) Inactive Army

449. (U1C2L2:G17) Forces Command, located in Fort Bragg, North Carolina, is also called \_\_\_\_\_.

- A) FORSCOM
- B) Troop command
- C) The key personal command of the U.S. Army
- D) F-troops command

450. (U1C2L2:G18) The Army command that controls all the combat and support units at installations throughout the U.S. is called \_\_\_\_\_.

- A) FORSCOM
- B) Joint Army Command
- C) TRADOC
- D) Unified Troop Command or UTC

451. (U1C2L2:G19) The U.S. Army ROTC Cadet Command is a subordinate of what major command?

- A) TRADOC
- B) FORSCOM
- C) Fort Monroe, Virginia
- D) The United States Military Academy

452. (U1C2L2:G20) In the military, what does TRADOC stand for?

- A) Training and Doctrine Command
- B) Training of Doctors
- C) Train and Distribution of Cohorts
- D) Train Real Army Defense Command

453. (U1C2L2:G21) What are the six branches of Combat Arms in the Army?

- A) Infantry, Armor, Field Artillery, Air Defense Artillery, Aviation, and Corps of Engineers
- B) Military Police, Infantry, Aviation, Field Artillery, Armor, and JAG
- C) Armor, Infantry, JAG, Aviation, Military Police, and Special Operations
- D) Special Operations, Infantry, Armor, Field Artillery, Air Defense Artillery, and Aviation

454. (U1C2L2:G22) The branches of the U.S. Army that are directly involved in the conduct of actual fighting during times of war are called \_\_\_\_\_.

- A) Infantry
- B) Combat Arms
- C) Combat Support Arms
- D) JAG

455. (U1C2L2:G23) Name the two branches of the Army that are non-accession branches and do not accept personnel in a traditional manner.

- A) Special Forces and Civilian Affairs
- B) Staff Judge Advocate
- C) Medical Corps
- D) Aviation Branch

456. (U1C2L2:G24) The \_\_\_\_\_ branch of the Army uses unconventional warfare, foreign internal defense, strategic reconnaissance and counterterrorism to accomplish its mission.

- A) Navy Seals
- B) Special Weapon and Ammunition Teams (SWAT)
- C) Special Forces
- D) JAG

457. (U1C2L2:F1) The Army defends American interests by:

- A) defending the U.S. Constitution against foreign enemies
- B) defending the U.S. Constitution against foreign and domestic enemies
- C) conducting land-only defenses on the battlefield
- D) conducting defense operations at sea

458. (U1C2L2:V1) Choose the word that best completes the sentence below.

The Special Forces and Civil Affairs are \_\_\_\_\_ branches of the military.

- A) nonaccession
- B) doctrine
- C) unconventional
- D) counterintelligence

459. (U1C2L2:V2) Choose the word that best completes the sentence below.

Military Intelligence uses \_\_\_\_\_ to prevent sabotage and to gather military information.

- A) nonaccession
- B) doctrine
- C) unconventional
- D) counterintelligence

460. (U1C2L2:V3) Choose the word that best completes the sentence below.

TRADOC is responsible for developing Army \_\_\_\_\_ and training.

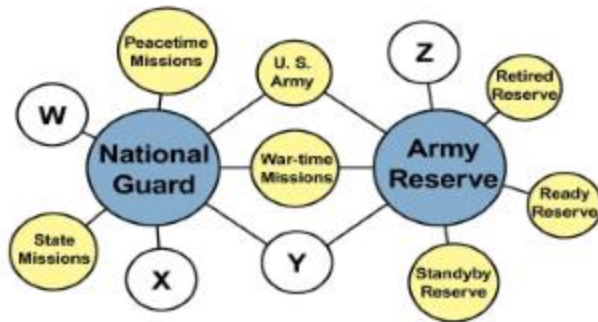
- A) nonaccession
- B) doctrine
- C) unconventional
- D) counterintelligence

461. (U1C2L2:V4) Choose the word that best completes the sentence below.

Special Forces accomplish missions of \_\_\_\_\_ warfare, foreign internal defense, direct action, strategic reconnaissance, and counterterrorism.

- A) nonaccession
- B) doctrine
- C) unconventional
- D) counterintelligence

462. (U1C2L3:Q1) Study the Double-Bubble Thinking Map<sup>®</sup> and complete it with the correct option (A-D).



- A) W = Citizen-soldiers; X = State Control; Y = Federal Control; Z = ROTC/JROTC
- B) W = Active Duty; X = Federal Control; X = State Control; Z = ROTC/JROTC
- C) W = ROTC/JROTC; X = Federal Control; Y = State Control; Z = Citizen-soldiers
- D) W = ROTC/JROTC; X = State Control; Y = Federal Control; Z = Active Duty

463. (U1C2L3:Q2) Study the chart and select the option (A-D) that indicates the correct reserve categories.

#### Categories of Reservists:

- X. Soldiers who have completed a total of at least 20 years of service. Are eligible to be activated, if qualified, to active duty in times of declared war or national emergency.
- Y. Soldiers who have not yet completed their 8-year military service obligation. Can be in an active or inactive. May choose to retain their Reserve affiliation after their obligation is complete if they have skills that may be of future use by the Army.
- Z. Consists of the IRR, and the Selected Reserve. Soldiers are assigned to Troop Program Units (TPU's), Individual Mobilization Augmentation Programs (IMA's), and Active Guard/Reserve (AGR) Programs.

A) X = Standby;  
 Y = Ready;  
 Z = Retired

B) X = Retired;  
Y = Standby;  
Z = Ready

C) X = Retired;  
Y = Ready;  
Z = Standby

D) X = Ready;  
Y = Retired;  
Z = Standby

464. (U1C2L3:Q3) At a ceremony on July 4<sup>th</sup>, the guest speaker was praising the service of a military unit. The speaker said, "We thank these men and women, these soldiers, for their service to our nation. They, and those that served before them, and those who will serve in the future are part of our country's oldest military organization. They have served in times of national emergency, during natural disasters, during peacetime and war time. We owe them our thanks." What type of unit is the speaker describing?

- A) An Active Army Unit
- B) An Army Reserve Unit
- C) A National Guard Unit

465. (U1C2L3:Q4) Under the National Defense Act of 1916, which Army force was formally established for the following reasons? 1) Citizens were suspicious of a large active Army; 2) It was difficult to financially support a large standing Army; 3) During the Spanish-American War, the active Army could not provide the necessary medical personnel to take care of the entire force, so they had to contract physicians to help.

- A) The Army National Guard
- B) The Army Reserve
- C) The Active Army
- D) The U.S. Army

466. (U1C2L3:G1) What act officially designated state organized militias as the National Guard?

- A) The Medical Corps Reserve Act of 1908.
- B) The Reserve Corps Act of 1916.
- C) The National Defense Act of 1916.
- D) The Army National Guard Act of 1916.

467. (U1C2L3:G2) The \_\_\_\_\_ is a state or territorial organization that is under the control of a governor during peacetime.

- A) Elite Guard
- B) Coast Guard
- C) Army National Guard
- D) Air National Guard

468. (U1C2L3:G3) Name the three main missions of the Army National Guard.

- A) To be combat-ready to deploy and fight anywhere in the world; to save lives and property during natural disaster or civil disturbances; to assist in times of national emergency.
- B) To fight civil wars at home; to save lives and property during natural disaster or civil disturbances; to assist in times of national emergency.
- C) To supplement police forces in towns that don't have their own force; to save lives and property during natural disaster or civil disturbances; to assist in time of national emergency.
- D) To be combat-ready to deploy and fight anywhere in the world; to respond to world disasters, such as earthquakes in Japan, China, Russia, etc.; to assist in time of national emergency.

469. (U1C2L3:G4) Another name for the part-time Soldiers in the National Guard is \_\_\_\_\_.

- A) Weekend Guard
- B) Half-timer
- C) Guardians
- D) Citizen-Soldiers

470. (U1C2L3:G5) How and when did the U.S. Army Reserve get its start?

- A) In 1947, at the same time the Air Force was established by the Congressional National Security Act.
- B) At the same time the Navy was established, in 1775.
- C) In 1908 with the establishment of the Medical Corps Reserve. Then, in 1916, the Reserve Corps was established by the National Defense Act.
- D) In the 1960s with the Civil Rights Act.



471. (U1C2L3:G6) What is the mission of the Air National Guard?

- A) Agile combat support; control of airspace; exploration of space.
- B) Precision engagement; global information superiority; and in a community role.
- C) To provide ready units to the state and nation in a federal role (to support national security); in a state role (to protect life and property); and in a community role.
- D) To have air-space superiority; to deliver global attacks; to be always ready for rapid global mobility.

472. (U1C2L3:G7) The National Guard was officially designated as state-organized militias by what act?

- A) The National Guard
- B) The National Defense Reorganization Act of 1796
- C) The National Defense Act of 1916
- D) The Judiciary Act of 1789

473. (U1C2L3:G8) A state or territorial organization that is under the control of a governor during peacetime is the \_\_\_\_\_.

- A) FBI
- B) Army National Guard
- C) U.S. Army
- D) U.S. Army Reserves

474. (U1C2L3:G9) Citizen Soldiers is another name for the part-time Soldiers in what organization?

- A) The U.S. Army
- B) The National Guard
- C) The Individual Ready Reserve or IRR
- D) The Retired Reserved Pool or RRP

475. (U1C2L3:F1) The U.S. Constitution provides that each state, territory, and the District of Columbia has its own \_\_\_\_\_?

- A) Ready Reserve
- B) Standby Reserve
- C) National Guard
- D) Total Army Force

476. (U1C2L3:V1) What is the definition of the word "militia"?

- A) Members of the National Guard or Army Reserves

- B) Members of the military actively engaged in combat
- C) Trained military members available to augment active duty forces in times when activated
- D) A citizen army controlled by the individual states and subject to call during an emergency by the government of a country

477. (U1C2L3:V2) What is the definition of "Citizen-Soldiers"?

- A) Members of the military actively engaged in combat
- B) Members of the National Guard or Army Reserves
- C) A citizen army controlled by the individual states and subject to call during an emergency by the government of a country
- D) To assemble, prepare, or put into operation (personnel, units, equipment, and so on) for war or a similar emergency

478. (U1C2L3:V3) What is the definition of the word "mobilize"?

- A) Trained military members available to augment active duty forces in times when activated
- B) Members of the National Guard or Army Reserves
- C) A citizen army controlled by the individual states and subject to call during an emergency by the government of a country
- D) To assemble, prepare, or put into operation (personnel, units, equipment, and so on) for war or a similar emergency

479. (U1C2L3:V4) What is the definition of the word "combatant"?

- A) A person engaged in combat
- B) Members of the National Guard or Army Reserves
- C) Trained military members available to augment active duty forces in times when activated
- D) To assemble, prepare, or put into operation (personnel, units, equipment, and so on) for war or a similar emergency.

480. (U1C2L3:V5) What is the definition of "Reserve Corps"?

- A) A citizen army controlled by the individual states and subject to call during an emergency by the government of a country
- B) Members of the National Guard or Army Reserves
- C) Trained military members available to augment active duty forces in times when activated
- D) To assemble, prepare, or put into operation (personnel, units, equipment, and so on) for war or a similar emergency

481. (U1C2L4:Q1) You are a member of one of the Navy's task force packages called a strike group. Your strike group is comprised of amphibious ships, cruisers, destroyers, and submarines. What type of strike group is it?

- A) Carrier Strike Group
- B) Expeditionary Strike Group
- C) Surface Action Group

482. (U1C2L4:Q2) During composite warfare operations, the Officer in Tactical Command (OTC) manages the battlespace through the efforts of the Principle Warfare Commanders. If you were one of the Principle Warfare Commanders and your job was to protect the force from enemy aircraft, missiles, and ballistic missiles, which of the Principle Warfare Commanders are you?

- A) Anti-Surface Warfare Commander (ASuW)
- B) Strike Warfare Commander
- C) Anti-Submarine Warfare Commander (ASW)
- D) Air Defense Commander (ADC)

483. (U1C2L4:Q3) You are the Officer in Charge of the Tactical Command (OTC). You want your Principle Warfare Commanders to be able to respond immediately to any enemy attack, so you delegate \_\_\_\_\_ to them.

- A) Command by Negation
- B) Composite Warfare
- C) Underway Replenishment
- D) Immediate need

484. (U1C2L4:Q4) During times of war, the Navy, under the direction of the President and the Secretary of Defense, has four primary missions. Which of the following is NOT a primary war time mission for the Navy?

- A) Seek out and destroy enemy forces at sea.
- B) Destroy and reduce enemy sea commerce.
- C) Maintain control of the seas.
- D) Attack with nuclear weapons if part of the war plan.

485. (U1C2L4:F1) Where is the Naval Reserve Force headquartered?

- A) Norfolk

- B) New York City
- C) New Orleans
- D) Sacramento

486. (U1C2L4:F2) Who is the Navy's highest-ranking officer, who serves as the Secretary of the Navy's principal naval adviser and represents the Navy on the Joint Chiefs of Staff?

- A) Chief of Naval Operations
- B) Chief of Sea Operations
- C) Leader of Naval Operations
- D) Commander of Sea Operations

487. (U1C2L4:V1) What is the definition of "Forward from the Sea"?

- A) The three-dimensional battle area above, upon, and below the surface of the ocean.
- B) Commands warfare functions within the battlespace.
- C) U.S. Naval strategy to project power in the littoral regions of the world.
- D) Forward deployed forces of the United States Navy.

488. (U1C2L4:V2) What is the definition of "Command by Negation"?

- A) The three-dimensional battle area above, upon, and below the surface of the ocean.
- B) Orders to continue operations until told to stop.
- C) U.S. Naval strategy to project power in the littoral regions of the world.
- D) Commands warfare functions within the battlespace.

489. (U1C2L4:V3) What is the definition of "Officer in Tactical Command"?

- A) The three-dimensional battle area above, upon, and below the surface of the ocean.
- B) Commands warfare functions within the battlespace.
- C) U.S. Naval strategy to project power in the littoral regions of the world.
- D) Forward deployed forces of the United States Navy.

490. (U1C2L4:V4) What is the definition of "Battlespace"?

- A) The three-dimensional battle area above, upon, and below the surface of the ocean.
- B) Orders to continue operations until told to stop.
- C) Logistic supply method that allows ships to maintain forward Navy presence.
- D) Forward deployed forces of the United States Navy.

491. (U1C2L4:V5) What is the definition of "Numbered Fleets"?

- A) The three-dimensional battle area above, upon, and below the surface of the ocean.
- B) Orders to continue operations until told to stop.

- C) ADC, ASuW, ASW, and Strike Warfare Commanders.
- D) Forward deployed forces of the United States Navy.

492. (U1C2L4:V6) What is the definition of "Operating Forces"?

- A) The combatant arm of the United States Navy.
- B) ADC, ASuW, ASW, and Strike Warfare Commanders.
- C) Organization that recruits, organizes, trains, equips, and supports Navy operating forces.
- D) Structured force designed to perform a specific task or mission.

493. (U1C2L4:V7) What is the definition of "Underway Replenishment"?

- A) Orders to continue operations until told to stop.
- B) Forward deployed forces of the United States Navy.
- C) Organization that recruits, organizes, trains, equips, and supports Navy operating forces.
- D) Logistic supply method that allows ships to maintain forward Navy presence.

494. (U1C2L4:V8) What is the definition of "Shore Establishment"?

- A) Forward deployed forces of the United States Navy.
- B) ADC, ASuW, ASW, and Strike Warfare Commanders.
- C) Organization that recruits, organizes, trains, equips, and supports Navy operating forces.
- D) Structured force designed to perform a specific task or mission.

495. (U1C2L4:V9) What is the definition of "task force"?

- A) The combatant arm of the United States Navy.
- B) ADC, ASuW, ASW, and Strike Warfare Commanders.
- C) Organization that recruits, organizes, trains, equips, and supports Navy operating forces.
- D) Structured force designed to perform a specific task or mission.

496. (U1C2L4:V10) What is the definition of "Principle Warfare Commanders"?

- A) Commands warfare functions within the battlespace.
- B) ADC, ASuW, ASW, and Strike Warfare Commanders.
- C) Organization that recruits, organizes, trains, equips, and supports Navy operating forces.
- D) Forward deployed forces of the United States Navy.

497. (U1C2L5:Q1) You are a member of a civil engineering squadron in an Air Force mission

support group. Your squadron supports the other groups in your tactically self-contained combat unit, which different types of aircraft formed as an independently deployable unit. Which of the following best describes your unit?

- A) Air Expeditionary Wing (AEW)
- B) Numbered Air Force (NAF)
- C) Maintenance Group
- D) Wing

498. (U1C2L5:Q2) The Air Force's counterair operations target enemy aircraft, airfields, and surface to air missiles to gain and maintain Air Superiority. The objective of Air Superiority is to:

- A) Destroy enemy targets on the ground.
- B) To allow air, ground, and sea forces to operate while denying the enemy the same.
- C) To keep air trade routes open for transport of goods and materials.
- D) To make sure civilian aircraft are safe.

499. (U1C2L5:Q3) Counterland missions use several different attack aircraft to destroy enemy supplies and replacements, and to provide close air support to U. S. ground combat units. Which of the following is NOT one of the primary attack aircraft used in these types of missions?

- A) A-10 "Warthog"
- B) B-52 Bomber
- C) F-15 Strike Eagle
- D) F-117 Nighthawk

500. (U1C2L5:F1) What is the Air Force's largest operational unit?

- A) Counterland
- B) Strategic Attack
- C) Air Wing
- D) Numbered Air Force

501. (U1C2L5:F2) The Secretary who heads the Air Force does not have a cabinet rank and is a \_\_\_\_\_.

- A) civilian

- B) member of the Air Force
- C) member of the Senate
- D) member of the House

502. (U1C2L5:F3) The National Security Act of 1947 loosely grouped the Departments of the Army, Navy, and Air Force under what title?

- A) National Military Group
- B) National Military Force
- C) National Military Circle
- D) National Military Establishment

503. (U1C2L5:V1) Choose the word that best matches the definition below.

"Tactically self-contained, deployable wing-size unit."

- A) Air Expeditionary Force
- B) Air Expeditionary Wing (AFW)
- C) Air Superiority
- D) Air Wing
- E) Counterland

504. (U1C2L5:V2) Choose the word that best matches the definition below.

"The Air Force's largest deployable unit."

- A) Air Expeditionary Force
- B) Air Expeditionary Wing (AFW)
- C) Air Superiority
- D) Air Wing
- E) Counterland

505. (U1C2L5:V3) Choose the word that best matches the definition below.

"The Air Force's basic operational unit."

- A) Air Expeditionary Force
- B) Air Expeditionary Wing (AFW)
- C) Air Superiority
- D) Air Wing
- E) Counterland

506. (U1C2L5:V4) Choose the word that best matches the definition below.

"Affording freedom of action to friendly and allied forces while denying the same to the enemy."

- A) Air Expeditionary Force
- B) Air Expeditionary Wing (AFW)
- C) Air Superiority
- D) Air Wing
- E) Counterland

507. (U1C2L5:V5) Choose the word that best matches the definition below.

"Missions interdicting enemy supplies and providing close air support to the Army."

- A) Air Expeditionary Force
- B) Air Expeditionary Wing (AFW)
- C) Air Superiority
- D) Air Wing
- E) Counterland

508. (U1C2L5:V6) Choose the word that best matches the definition below.

"Striking enemy Centers of Gravity to destroy their will and ability to fight."

- A) Countersea
- B) Numbered Air Force
- C) Strategic Attack
- D) Strategic Triad

509. (U1C2L5:V7) Choose the word that best matches the definition below.

"Missions targeting enemy ships and submarines operating in proximity to land."

- A) Countersea
- B) Numbered Air Force
- C) Strategic Attack
- D) Strategic Triad

510. (U1C2L5:V8) Choose the word that best matches the definition below.

"Nuclear deterrent force of land-based bombers and missiles, and fleet ballistic missile submarines."



- A) Countersea
- B) Numbered Air Force
- C) Strategic Attack
- D) Strategic Triad

511. (U1C2L5:V9) Choose the word that best matches the definition below.

"The Air Force's largest operational unit."

- A) Countersea
- B) Numbered Air Force
- C) Strategic Attack
- D) Strategic Triad

512. (U1C2L6:Q1) A Marine is stationed during peace time in a foreign country where there are no Navy or Marine Corps bases and no places for Marine units to train. What type of job is the Marine most likely performing?

- A) Dock Landing
- B) Embassy Security
- C) Amphibious Assault
- D) Ground Combat

513. (U1C2L6:Q2) Your cousin is a United States Marine. He is part of an Amphibious Ready Group. He told you that his ship carries about 800 Marines, six helicopters, and 24 amphibious assault vehicles. What kind of ship is he describing?

- A) Amphibious Assault Ship
- B) Amphibious Transport Dock
- C) Dock Landing Ship
- D) Maritime Prepositioned Squadron

514. (U1C2L6:Q3) While you were waiting for a flight at the airport, you talked to a Marine about his job. He said that his unit trained extensively on deploying ground units out of enemy sight, then moving their amphibious assault ships to different locations so that the enemy doesn't know where an attack would come from. What type of operation is he describing?

- A) Maritime Prepositioned Squadrons
- B) Noncombatant Evacuation Operations
- C) Operational Maneuver from the Sea
- D) Vertical Envelopment

515. (U1C2L6:Q4) A Marine that visited your school said that the thing she most enjoyed about the Marines was the concept of surrounding the enemy with air, ground, and surface power and striking from all directions. What is she describing?

- A) Amphibious Assault
- B) Marine Corps Philosophy
- C) Operational Maneuver from the Sea
- D) Vertical Envelopment

516. (U1C2L6:F1) What year was the Marine Corps founded?

- A) 1779
- B) 1778
- C) 1775
- D) 1776

517. (U1C2L6:F2) Who appoints the commandant that heads the Marine Corps?

- A) The President
- B) The Vice President
- C) The Leader of the House
- D) The Secretary of Defense

518. (U1C2L6:F3) The Marine Corps is the \_\_\_\_\_ among the uniform services.

- A) largest
- B) oldest
- C) newest
- D) smallest

519. (U1C2L6:V1) Choose the word that best completes the sentence below.

Every Marine unit is conceptually organized into a \_\_\_\_\_, combining air and ground combat elements into a seamless operation.

- A) Marine Air Ground Task Force
- B) Marine Expeditionary Unit
- C) Marine Expeditionary Brigade
- D) Marine Expeditionary Force

520. (U1C2L6:V2) Choose the word that best completes the sentence below.

The \_\_\_\_\_ is an intermediate size combat unit composed of approximately 16,500 Marines.

- A) Marine Air Ground Task Force
- B) Marine Expeditionary Unit
- C) Marine Expeditionary Brigade
- D) Marine Expeditionary Force

521. (U1C2L6:V3) Choose the word that best completes the sentence below.

A \_\_\_\_\_ is the largest combat unit composed of approximately 42,000 Marines that can be quickly deployed in times of crisis.

- A) Marine Air Ground Task Force
- B) Marine Expeditionary Unit
- C) Marine Expeditionary Brigade
- D) Marine Expeditionary Force

522. (U1C2L6:V4) Choose the word that best completes the sentence below.

The \_\_\_\_\_ is the smallest combat unit composed of approximately 2,200 Marines.

- A) Marine Air Ground Task Force
- B) Marine Expeditionary Unit
- C) Marine Expeditionary Brigade
- D) Marine Expeditionary Force

523. (U1C2L6:V5) Choose the word that best completes the sentence below.

Marine forces employ \_\_\_\_\_ to mask their movements and synchronize attacks.

- A) Maritime Prepositioned Squadron
- B) Noncombatant Evacuation Operation
- C) Vertical Envelopment
- D) Operational Maneuver from the Sea

524. (U1C2L6:V6) Choose the word that best completes the sentence below.

The Marine Corps uses \_\_\_\_\_ to rescue U.S. citizens and allies from foreign combat zones.

- A) Maritime Prepositioned Squadron

- B) Noncombatant Evacuation Operation
- C) Vertical Envelopment
- D) Operational Maneuver from the Sea

525. (U1C2L6:V7) Choose the word that best completes the sentence below.

The Marine Corps conducts a \_\_\_\_\_ flanking or surrounding the enemy using air, ground, and surface assets to strike from multiple directions at once.

- A) Maritime Prepositioned Squadron
- B) Noncombatant Evacuation Operation
- C) Vertical Envelopment
- D) Operational Maneuver from the Sea

526. (U1C2L6:V8) Choose the word that best completes the sentence below.

A \_\_\_\_\_ is a small flotilla of cargo ships stationed at sea close to the hotspots of the world.

- A) Maritime Prepositioned Squadron
- B) Noncombatant Evacuation Operation
- C) Vertical Envelopment
- D) Operational Maneuver from the Sea

527. (U1C2L7:Q1) While watching a presentation about the Coast Guard, you noticed that the speaker talked for a long time about the many types of missions that the Coast Guard performs. However, the speaker said that one of the missions was to activate former commercial ships for duty within 4 to 20 days. Which mission is he mistaking for a Merchant Marine mission?

- A) Recreational Boating Safety
- B) Marine Environmental Protection
- C) Waterway/Vessel Traffic Management
- D) Ready Reserve Force

528. (U1C2L7:Q2) Marine Mobility is a core role of the Coast Guard. Our economy depends on the safe movement of freight and oil through our waterways. Which of the following is NOT a mission related to the role of Marine Mobility?

- A) Maritime Interception Operations
- B) Bridge administration
- C) Domestic Icebreaking
- D) Waterways/Vessel traffic management

529. (U1C2L7:Q3) You and some other Cadets have been assigned to give a group presentation about one of the Coast Guard's core roles. Your group divided research responsibilities into drug interdiction, alien migrant interdiction, treaty enforcement, and general maritime law enforcement. Which Coast Guard role is the topic of your presentation?

- A) Maritime Safety
- B) Maritime Security
- C) National Defense
- D) Peacetime Military Engagement

530. (U1C2L7:Q4) You read a story about a group of ships who didn't deliver their cargo. The ships stopped at their nearest port, downloaded their cargo, then proceeded to a military port where they were loaded up with military equipment and sent to a location overseas. Which Merchant Marine reserve fleet program was activated to make this occur?

- A) National Defense Reserve Fleet (NDRF)
- B) Ready Reserve Force (RRF)
- C) Maritime Security Fleet
- D) Voluntary Intermodal Shipping Agreement (VISA)

531. (U1C2L7:F1) What is the nation's oldest maritime agency?

- A) The Army
- B) The Merchant Marines
- C) The Sea Guard
- D) The Coast Guard

532. (U1C2L7:F2) A term that means "relating to or bordering on the sea is" \_\_\_\_.

- A) commerce
- B) maritime
- C) sealift
- D) cutter

533. (U1C2L7:F3) The Coast Guard is located within \_\_\_\_\_.

- A) The Department of the Navy
- B) The Department of Homeland Security
- C) Marines

D) its own department

534. (U1C2L7:V1) Choose the word that best completes the sentence below.

In peacetime, more than 95 percent of DoD cargo is transported by U.S.-registered or \_\_\_\_\_ ships.

- A) commerce
- B) sealift
- C) ecosystem
- D) flagged

535. (U1C2L7:V2) Choose the word that best completes the sentence below.

In peacetime, the Merchant Marines transact the nation's \_\_\_\_\_.

- A) commerce
- B) logistics
- C) ecosystem
- D) cutter

536. (U1C2L7:V3) Choose the word that best completes the sentence below.

America's marine waters and their \_\_\_\_\_ are vital to the health, well being, and economy of the nation.

- A) commerce
- B) cutter
- C) ecosystem
- D) maritime

537. (U1C2L7:V4) Choose the word that best completes the sentence below.

The Military Sealift Command uses an \_\_\_\_\_ method to help sustain military operations overseas.

- A) ecommerce
- B) intermodal
- C) ecosystem
- D) operations plan

538. (U1C2L7:V5) Choose the word that best completes the sentence below.

Each Coast Guard District uses many different facilities, including small, armed vessels known as

\_\_\_\_\_.

- A) logistics
- B) cutters
- C) ecosystems
- D) sealifts

539. (U1C2L7:V6) Choose the word that best completes the sentence below.

Coast Guard forces and capabilities are incorporated in the Unified Combatant Commanders' \_\_\_\_\_.

- A) Strategic Plan
- B) Maritime Plan
- C) Operations Plan
- D) Commerce Plan

540. (U1C2L7:V7) Choose the word that best completes the sentence below.

One duty of the Coast Guard is to protect any \_\_\_\_\_ region in which U.S. interests may be at risk.

- A) logistics
- B) maritime
- C) flagged
- D) sealift

541. (U1C2L7:V8) Choose the word that best completes the sentence below.

Sealift ships are placed in a \_\_\_\_\_ way in order to transport supplies to U.S. overseas forces.

- A) logistics
- B) cutter
- C) intermodal
- D) strategic

542. (U1C2L7:V9) Choose the word that best completes the sentence below.

\_\_\_\_\_ is the aspect of military science that deals with the maintenance of military facilities and transportation of military personnel.

- A) Logistics
- B) Maritime

- C) Commerce
- D) Sealift

543. (U1C2L7:V10) Choose the word that best completes the sentence below.

\_\_\_\_\_ assets account for about 95 percent of all the tonnage delivered in support of military requirements in peacetime and during times of crisis.

- A) Commerce
- B) Maritime
- C) Strategic
- D) Sealift

544. (U1C2L8:Q1) One of your cousins just returned from a Peace Corps mission. She said that she was assigned to an agricultural development mission because she had experience in farming. She said that she helped teach composting, soil improvement, and post-harvest management. In what area of agriculture development did she work?

- A) Agriculture and forestry extension
- B) Animal husbandry
- C) Applied agricultural science
- D) Farm management and agribusiness

545. (U1C2L8:Q2) Your friend has a dilemma. She wants to help people overseas by joining the Peace Corps but she also feels that she should volunteer to help people in America. What program can you recommend to her that can help her do both?

- A) After service funds for transition
- B) Fellows/USA
- C) Job Placement Support
- D) Master's International

546. (U1C2L8:Q3) A Peace Corp volunteer who spoke to your class read a letter from the community that she helped. They thanked her for teaching them about sewage and irrigation systems because their overall sickness and infant mortality rates dropped dramatically. What was her Peace Corps operational area?

- A) Environmental and Water Resources Engineering
- B) Education, Youth Outreach, and Community Development
- C) Environmental Awareness
- D) Urban and Regional Planning



547. (U1C2L8:Q4) Sophie has an associate degree in business, but has experience in a variety of other areas. She turned down her Peace Corps assignment because she wanted to teach business on her mission. What does Sophie not understand about the selection process?

- A) Her business degree must be a bachelor's degree or higher.
- B) The Peace Corps gives you assignments in areas where you can learn additional skills
- C) The Peace Corps tries to match your skills, including those outside of an educational degree, with a program that needs those skills.
- D) The Peace Corps only has missions that teach health and agricultural skills.

548. (U1C2L8:F1) In 1961, President John F. Kennedy established the Peace Corps to promote

- A) personal growth and service
- B) world peace and friendship
- C) education in developing countries
- D) business opportunities abroad

549. (U1C2L8:F2) A(n) \_\_\_\_\_ is someone who does work without being paid for it because they want to do it.

- A) service member
- B) employee
- C) volunteer
- D) civilian

550. (U1C2L8:V1) Choose the word that best describes the scenario below.

John decided that he wanted to join the Peace Corps and help AIDS victims in Africa. What does John want to do?

- A) service learning
- B) volunteer
- C) partnership
- D) mission

551. (U1C2L8:V2) Choose the word that best describes the scenario below.

The university that Larry goes to offers academic credit to students if they join the Peace Corps. What is the deal between Larry's university and the Peace Corps called?

- A) service learning
- B) volunteer
- C) partnership
- D) mission

552. (U1C2L8:V3) Choose the word that best describes the scenario below.

Beth's school provides an environment in which she can learn while also participating in organized activities within her community. What is this called?

- A) service learning
- B) volunteer
- C) partnership
- D) mission

553. (U1C2L9:Q1) David wanted to serve his country by joining the Army, but was disqualified for a medical condition. He still wants to serve, but he also wants to get leadership experience and learn team-building skills. Which AmeriCorps program would you suggest he investigate?

- A) AmeriCorps\*NCCC
- B) AmeriCorps\*VISTA
- C) AmeriCorps\*State and National
- D) National Service for Bridging the Digital Divide

554. (U1C2L9:Q2) You aren't too interested in teaching, but sales and recruiting are skills that you would like to develop for a future business career. Working for agencies associated with which AmeriCorps program is most likely to provide you an opportunity to develop your skills?

- A) Organizations associated with AmeriCorps\*NCCC
- B) Organizations associated with AmeriCorps\*State and National
- C) Organizations associated with AmeriCorps\*VISTA

555. (U1C2L9:Q3) President Bush created an initiative meant to coordinate civilian volunteerism both domestically and abroad. The purpose was to better help communities in our country and around the world. The President asked that Americans give two years of their lives to volunteerism. The name of this initiative is .

- A) AmeriCorps
- B) Corporation for National and Community Service
- C) National Service Bridging the Digital Divide
- D) USA Freedom Corps

556. (U1C2L9:F1) The network of national service programs that engage Americans in intensive service to meet the nation's critical needs in education, public safety, health, and the environment is called \_\_\_\_\_.

- A) AmeriCorps
- B) The Peace Corp
- C) U.S. Air Force
- D) Volunteers of America

557. (U1C2L9:F2) Which mission listed below is not a mission of AmeriCorps?

- A) Getting Things Done
- B) Strengthening Communities
- C) Expanding Businesses
- D) Encouraging Responsibility

558. (U1C2L9:F3) AmeriCorps members serve through all of the following organizations except \_\_\_\_\_.

- A) faith based organizations
- B) public agencies
- C) non profit organizations
- D) corporations

559. (U1C2L9:V1) Choose the word that best describes the scenario below.

Jessica's school recently received a large sum of money from the state to expand. What is this money called?

- A) community service
- B) financial grant
- C) non profit group
- D) financial service

560. (U1C2L9:V2) Choose the word that best describes the scenario below.

Ryan volunteers his time tutoring children in a poor neighborhood through an organization that does not make money. What is this organization called?

- A) community service

- B) financial grant
- C) non profit group
- D) financial service

561. (U1C2L9:V3) Choose the word that best describes the scenario below.

Taylor volunteers her time on weekends to clean up local city parks. What is she doing?

- A) community service
- B) financial grant
- C) non profit group
- D) financial service

[Answer Key]

- 1. B
- 2. B
- 3. D
- 4. A
- 5. D
- 6. D
- 7. D
- 8. B
- 9. A
- 10. C
- 11. C
- 12. A
- 13. B
- 14. A
- 15. B
- 16. B
- 17. C
- 18. B
- 19. D
- 20. D
- 21. B
- 22. A
- 23. B
- 24. A
- 25. C
- 26. A
- 27. B
- 28. B
- 29. A

30. D  
31. C  
32. A  
33. B  
34. C  
35. D  
36. B  
37. A  
38. B  
39. D  
40. A  
41. A  
42. A  
43. A  
44. D  
45. C  
46. D  
47. C  
48. A  
49. B  
50. D  
51. B  
52. A  
53. B  
54. C  
55. D  
56. B  
57. B  
58. C  
59. C  
60. B  
61. B  
62. A  
63. B  
64. C  
65. C  
66. D  
67. D  
68. B  
69. A  
70. B  
71. A  
72. C  
73. B

74. D  
75. D  
76. B  
77. A  
78. A  
79. D  
80. A  
81. B  
82. D  
83. A  
84. C  
85. C  
86. D  
87. C  
88. B  
89. D  
90. A  
91. D  
92. A  
93. -  
94. A  
95. B  
96. A  
97. A  
98. B  
99. A  
100. C  
101. B  
102. B  
103. B  
104. D  
105. A  
106. C  
107. A  
108. C  
109. D  
110. A  
111. D  
112. B  
113. E  
114. A  
115. C  
116. A  
117. D

118. C  
119. B  
120. B  
121. A  
122. B  
123. C  
124. C  
125. C  
126. A  
127. A  
128. A  
129. D  
130. B  
131. C  
132. B  
133. C  
134. B  
135. D  
136. A  
137. B  
138. D  
139. A  
140. D  
141. A  
142. C  
143. C  
144. B  
145. D  
146. D  
147. D  
148. A  
149. D  
150. B  
151. C  
152. A  
153. B  
154. C  
155. D  
156. A  
157. C  
158. B  
159. C  
160. C  
161. B

162. D  
163. C  
164. C  
165. B  
166. A  
167. A  
168. C  
169. A  
170. A  
171. D  
172. A  
173. C  
174. D  
175. B  
176. B  
177. B  
178. B  
179. B  
180. B  
181. B  
182. B  
183. D  
184. A  
185. B  
186. B  
187. A  
188. C  
189. A  
190. D  
191. A  
192. B  
193. A  
194. A  
195. D  
196. A  
197. B  
198. A  
199. C  
200. A  
201. D  
202. B  
203. A  
204. A  
205. B



206. A  
207. B  
208. C  
209. D  
210. C  
211. A  
212. A  
213. D  
214. C  
215. C  
216. C  
217. B  
218. D  
219. A  
220. A  
221. B  
222. A  
223. B  
224. D  
225. C  
226. C  
227. B  
228. A  
229. C  
230. A  
231. A  
232. A  
233. C  
234. D  
235. D  
236. D  
237. D  
238. C  
239. A  
240. D  
241. A  
242. D  
243. B  
244. D  
245. B  
246. B  
247. B  
248. A  
249. A

250. A  
251. C  
252. A  
253. A  
254. A  
255. A  
256. D  
257. B  
258. D  
259. A  
260. A  
261. C  
262. C  
263. A  
264. C  
265. B  
266. B  
267. D  
268. B  
269. B  
270. D  
271. C  
272. D  
273. A  
274. B  
275. A  
276. B  
277. B  
278. B  
279. C  
280. B  
281. C  
282. C  
283. A  
284. B  
285. D  
286. A  
287. B  
288. D  
289. B  
290. D  
291. B  
292. B  
293. D

294. C  
295. C  
296. A  
297. A  
298. D  
299. C  
300. B  
301. C  
302. D  
303. D  
304. B  
305. D  
306. A  
307. A  
308. E  
309. A  
310. C  
311. C  
312. A  
313. B  
314. A  
315. B  
316. D  
317. B  
318. A  
319. A  
320. D  
321. A  
322. C  
323. D  
324. C  
325. C  
326. D  
327. A  
328. A  
329. C  
330. B  
331. C  
332. D  
333. A  
334. B  
335. A  
336. B  
337. B

338. A  
339. D  
340. B  
341. D  
342. D  
343. B  
344. A  
345. A  
346. C  
347. A  
348. C  
349. B  
350. D  
351. D  
352. B  
353. C  
354. D  
355. D  
356. B  
357. A  
358. B  
359. D  
360. C  
361. A  
362. C  
363. A  
364. D  
365. B  
366. D  
367. A  
368. C  
369. B  
370. D  
371. B  
372. B  
373. C  
374. A  
375. C  
376. B  
377. B  
378. C  
379. B  
380. A  
381. C

382. B  
383. B  
384. A  
385. A  
386. A  
387. B  
388. D  
389. D  
390. A  
391. A  
392. B  
393. A  
394. E  
395. D  
396. C  
397. B  
398. D  
399. C  
400. A  
401. B  
402. A  
403. C  
404. D  
405. C  
406. C  
407. B  
408. B  
409. D  
410. C  
411. B  
412. A  
413. B  
414. C  
415. D  
416. B  
417. B  
418. A  
419. B  
420. D  
421. B  
422. D  
423. C  
424. E  
425. D

426. A  
427. B  
428. C  
429. B  
430. D  
431. B  
432. C  
433. B  
434. A  
435. D  
436. A  
437. A  
438. D  
439. C  
440. C  
441. A  
442. C  
443. D  
444. D  
445. C  
446. B  
447. B  
448. A  
449. A  
450. A  
451. A  
452. A  
453. A  
454. B  
455. A  
456. C  
457. B  
458. A  
459. D  
460. B  
461. C  
462. A  
463. B  
464. C  
465. B  
466. C  
467. C  
468. A  
469. D

470. C  
471. C  
472. C  
473. B  
474. B  
475. C  
476. D  
477. B  
478. D  
479. A  
480. C  
481. B  
482. D  
483. A  
484. D  
485. A  
486. A  
487. C  
488. B  
489. B  
490. A  
491. D  
492. A  
493. D  
494. C  
495. D  
496. B  
497. A  
498. B  
499. B  
500. D  
501. A  
502. D  
503. B  
504. A  
505. D  
506. C  
507. E  
508. C  
509. A  
510. D  
511. B  
512. B  
513. B

514. C  
515. D  
516. C  
517. A  
518. D  
519. A  
520. C  
521. D  
522. B  
523. D  
524. B  
525. C  
526. A  
527. D  
528. A  
529. B  
530. D  
531. D  
532. B  
533. B  
534. D  
535. A  
536. C  
537. B  
538. B  
539. C  
540. B  
541. D  
542. A  
543. D  
544. C  
545. B  
546. A  
547. C  
548. B  
549. C  
550. B  
551. C  
552. A  
553. A  
554. B  
555. D  
556. A  
557. C



558. D

559. B

560. C

561. A