

Our Mission: To interpret aviation, particularly that related to New York State, with exhibits and programs that educate, entertain and excite the public

Volume 28, Issue 1

PRESIDENT'S COLUMN

Dear Friends of ESAM,

We are hitting the ground running this spring as your museum prepares for another great year at ESAM. Since my last message to you in January, our volunteers have taken on a number of initiatives that are critical to our forward momentum.

The final parts of the Concorde model were delivered to ESAM in late March. We have spent a lot of time and effort during the last year (not to mention the many trips to the Cradle of Aviation) required to disassemble and move this 100 ft long, 24,000 lb 50% scale “*new exhibit*” for ESAM. Trustees **John Panoski** and **Dan Wilson** never stop believing that in spite of the massive undertaking, ESAM will put the right combination of resources together for the next steps. Remember...Albany has its Nipper on Broadway...Glenville will have its Concorde on Saratoga Rd.

Renovating the Gallery 2 Annex (WWII Room) is moving ahead, with Trustee **John Kolwaite**'s vision, craftsmanship and hard work on new exhibits. During the past winter season, the room has been stripped, painted and new carpet installed. Our completion date is still a firm June 15, 2018 opening. Speaking about Gallery 2, **Jack Keem**, **Bob Lavery**, **Bob Tomlinson** and **Ralph Rosenthal** are putting the finishing touches on the Malta exhibit and Battaglia Space Hall. Next project will be the Akagi, and developing a robust barrier that keeps visitors and the exhibit safe.

Our Airpark is one of the many gems here at ESAM, but keeping the collection of 25 aircraft has always been a challenge for the Restoration volunteers. This year, we will introduce “**Adopt a Plane**” program that will seek local groups to spend a few hours this spring/summer cleaning and polishing our fleet. Restoration volunteer **Gary Davis** has accepted the challenge of running the program and has already signed on several groups.

The ESAM Memorial Park is undergoing a major renovation, led by **Lou Bach**, a volunteer in the Restorations group. This winter, all of the engraved bricks were cleaned and repainted. This spring, we will move the park to a new location that includes benches and landscaping. Our goal is to make the park more accessible, less maintenance and generate new interest. If you would like to buy a brick, the rules have not changed, just fill out an application!

Beginning June 1, 2018 ESAM will be instituting a **Membership Rewards Program** that will encourage members to move into the VIP Category. A very nominal dues increase will also begin on June 1, 2018 renewals. We will also be looking at how we increase our business memberships in the museum.



Bud Matthews

continued on page 3

AerONotes

Published quarterly by the
**Empire State
 Aerosciences Museum**
 250 Rudy Chase Drive
 Glenville, NY 12302
Phone: 518 377-2191
Fax: 518 377-1959
 E-mail: esam.office@gmail.com
 Web site: www.esam.org

Editor
 Lawrence McArthur

ESAM is a registered
 charitable organization
 chartered by the N.Y.S.
 Department of Education

President
 Chester "Bud" Matthews

First Vice President
 Peter Russo

Second Vice President
 Kevin Millington

Secretary
 Marvin Weiss

Treasurer
 Joyce M. Newkirk

Trustees
 Richard Bievenue
 C. Lynn Chevalier
 Tim Clark
 Michael Collins
 Gary Gershon
 John Kolwaite
 Frederic Lee
 Raymond Legere
 James Liguori
 Ryan Macherone
 John Panoski
 Sid Ramotar
 Ralph Rosenthal
 Linda Sheridan
 Dan Wilson

NEW MEMBERSHIP REWARDS PROGRAM

Starting on June 1, 2018, ESAM will be implementing a new **Membership Rewards Program** in association with the first membership fee change since 1998.

All members will continue to receive **Basic Member Benefits** including (1) Free Admission to Museum, (2) Member Card, (3) Newsletter – Aeronotes, (4) Special Events Admission Discounts, and (5) Gift Shop Specials. Members joining or renewing at a higher level will receive special Member Cards showing their membership level, plus the additional benefits shown on the chart below.

<u>MEMBER LEVEL</u>	<u>CURRENT COST</u>	<u>NEW COST</u>	<u>BENEFITS</u>
Friend of ESAM	\$1,000	\$1,000	<u>Basic Member Benefit</u> plus Bomber Jacket 10 Free ESAM Breakfasts 20% Off Gift Shop ESAM Pen
Galaxy Club	\$500	\$500	<u>Basic Member Benefit</u> plus ESAM Fleece Jacket 5 Free Breakfasts 20% Off Gift Shop ESAM Pen
VIP Sustaining	\$275	\$285	<u>Basic Member Benefit</u> plus ESAM Golf Shirt 4 Free Breakfasts 10% Off Gift Shop ESAM Pen
VIP Supporting	\$125	\$135	<u>Basic Member Benefit</u> plus 2 ESAM Tee Shirts 2 Free Breakfasts 10% Off Gift Shop
VIP Contributing	\$75	\$80	<u>Basic Member Benefit</u> plus 1 ESAM Tee Shirt Free Breakfast
Family	\$50	\$60	<u>Basic Member Benefit</u>
Individual	\$35	\$45	<u>Basic Member Benefit</u>
Senior	\$30	\$35	<u>Basic Member Benefit</u>

continued from Page 1

The ESAM Hangar Dance will be on September 15, 2018 so **Save the Date!** This will be our major fundraiser this year. Your support is really needed.

Finally, we have some organizational changes to report:

* **Donna Esposito** the Research Center Director has an incredible opportunity outside of ESAM. We wish her well and thank her for many changes that will have a lasting impact on the museum. Concurrently, **Phil Kennicott** and **Maury York** have accepted the role of Co-Directors of the Vander Veer Research Center.

* **Joyce Newkirk** has also accepted the additional role of *Chief Operating Officer* of ESAM. The creation of this position is in recognition that as we continue to grow, a professional organization will be required to manage our business.

As you can see, there is a lot going on around here, and this note only scratches the surface. I hope you can get over to the museum and see some of the things your museum is doing, with a very committed group of volunteers. Your support means a lot to us and the community.

Bud

ESAM HOSTS BREAKFAST PRESENTATIONS

ESAM was pleased to host two very interesting guest speakers at our January and February monthly breakfasts. Associated Press reporter **Chris Carola** gave the January breakfast presentation and local author **Larry Lewis** gave the February presentation.

In January, the breakfast attendees were treated to the fascinating story of “The Man Who Captured Tojo.” Chris Carola told the story of **US Army Lt. John “Jack” Wilpers** of Saratoga Springs. At the close of World War II, Wilpers was among the men who captured Japanese Prime Minister Hideki Tojo and played a key role in keeping him alive after a failed suicide attempt so that he could later stand trial for war crimes (see photo). Carola also explained his multi-year quest to interview Wilpers, which finally happened due to a chance meeting with Wilpers’ son near Cape Cod: both men were wearing the same Saratoga Race Track hat, struck up a conversation, and Carola discovered he was the son of the man he had tried to interview for years! After such a coincidence, Wilpers granted the interview and shared his amazing role in history.



**Prime Minister Tojo guarded by
Lt. Jack Wilpers**

Local author and retired GE chemist Larry Lewis told February breakfast goers about his new book, *Sadie’s Boys*, the poignant story of his grandmother Sadie’s efforts to get her two missing sons back during World War II. Larry’s father **Ben Lewis** was in the infantry in Europe and became a prisoner of war. Larry recounted his harrowing winter march from POW camp to POW camp at the close of the war. Ben survived his ordeal. Sadly, his older brother Charlie was not as fortunate. A navigator on a B-17 in the Pacific, Charlie’s plane was attacked on a mission over the Japanese-held island of New Britain. Four of the crew managed to bail out, but the plane crashed in the jungle with Charlie still inside. Three of the four survivors died as POWs. Although the wreckage of the plane has been found, **Charlie Lewis** is still listed as MIA.

ESAM is grateful to Chris and Larry for sharing their World War II stories!

DOCUMENTARY HERITAGE AND PRESERVATIONS SERVICES FOR NEW YORK INTERVIEWS ESAM'S DONNA ESPOSITO

Following is the text of an interview done by the Documentary Heritage and Preservation Services for New York (DHPSNY) with ESAM's Research Center Director **Donna Esposito**.

In DHPSNY's first Planning & Assessment round of 2017, we received an archival needs assessment application that particularly caught our eye. The name at the top was the **Empire State Aerosciences Museum**, and the Museum's website raised our hopes for the possibility of a very interesting site visit. Now, a few months since ESAM received its survey report, we reconnected with **Donna Esposito**, Director of the Museum's **Vander Veer Research Center**. She talked to us some more about the Museum's collections, upcoming programs, and how to stay focused at work while WWII fighter planes drop in to refuel outside your window.

Tell us a little about ESAM. Where is it located and how does it fit into the surrounding region?

New York State is particularly rich in aviation history, and the mission of the Empire State Aerosciences Museum is to interpret that history with exhibits and programs that educate, entertain, and excite the public.

ESAM is located in Glenville, New York at the Schenectady County Airport—yes, you can fly in to our museum! We are housed in the historic hangar and buildings originally occupied by the General Electric Flight Test Center from 1946 to 1964. Groundbreaking jet engine research and other aviation advances were pioneered here. The airport dates back to 1927 when one of the first planes to land was the Spirit of St. Louis, flown by Charles Lindbergh shortly after his famous transatlantic flight. Later the airport housed a flight school that trained pilots during World War II.

Silly question: ESAM seems like such a cool place to work. Is it sensory overload being surrounded by military aircraft and lunar landing gear while you're trying to do your job?

The amazing items in our collection always astound me, from macro artifacts like the fighter jets in our outdoor airpark to a personal World War II v-mail letter found within the pages of a donated book. I have been known to don a vintage helmet or hop in a cockpit when I have the chance! The biggest distraction is not in the museum, but the airport itself. Our neighbor across the runway is the New York Air National Guard's 109th Airlift Wing, which flies special ski-equipped Lockheed LC-130 Hercules planes for missions in Antarctica and Greenland. My colleagues and I love to watch them take off, land, and do pallet drops. We sometimes have other interesting visitors, like a World War II B-25 Mitchell bomber that stopped to refuel last summer.

Last fall we had the honor of receiving an archival needs assessment by DHPSNY archivist **Anastasia Matijkiw**. A group of us sat intently listening to her suggestions... until we heard the sounds of engines. Then Anastasia's audience jumped up and raced to the window to see what plane was landing! We did apologize afterwards and explained we couldn't help it!

What's the size and scope of ESAM's archival collections?

In addition to our exhibit space, we have a large aviation library and archival holdings housed in our Vander Veer Research Center. We have more than 10,000 books, over 5,000 photographs, and over 6,000 other archival documents including aviation-related records, newspapers, periodicals, manuals, pilot logbooks, scrapbooks, postcards, stamps, and artwork. There is also a large collection of moving images on film, VHS cassette, and DVD.

continued on page 5

continued from page 4

What's your favorite item or collection in the archives?

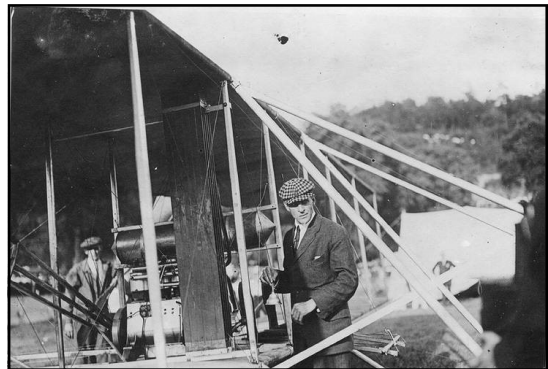
It's really hard to pick just one item or collection. My particular interest is World War II aviation, so I'm especially drawn to items from that era. I recently came across a set of ten personal photos of nose art from B-24 Liberator bombers of the 44th Bomb Group of the 8th Air Force in England. Planes usually had a colorful name and artwork to go with it. This collection includes "Pistol Packin' Mama," "Heaven Can Wait," and "My Everlovin' Gal," with appropriately risqué artwork. All of the planes were later lost in combat.

Another, more wholesome, photo that I adore shows a young woman in flight gear running across an airfield in front of a B-24 bomber. The back of the photo is labeled "Mickey Hartle, Relative of Ed Haven." Haven ran the flight school at the Schenectady County Airport during WWII, so I assume it was taken there. I haven't been able to find more information about Mickey Hartle. Maybe a blog reader will recognize her?

How do you make your collections accessible to the public?

The Research Center is open to the public on Fridays and Saturdays from 9:00 AM to 12:00 PM or at other times by appointment. We can also accept research requests by phone at (518) 377-2191 or email for those people who can't visit in person.

We would eventually like to have our catalog publicly searchable and more collections digitized. We do make one important photograph collection available online: The Frank Coffyn Collection. Frank Coffyn was an early aviation pioneer and associate of the Wright Brothers. Most of the images date from about 1910 and feature a variety of early Wright aircraft and aviation personalities. (See photo to the right).

**Have your collections been used to support any interesting research projects?**

Last year, producers at the Travel Channel's *Mysteries at the Museum* series contacted us and asked for help researching the creation of the first American jet engine during World War II. We were able to provide them with archival photos, a service manual for an early GE engine from 1945, and best of all, a 1950 comic book produced by GE called *Adventures in Jet Power*, which features our museum—then the GE Flight Test Center—on the cover!

Are there any current exhibits you would like to highlight?

Our newest exhibit is a recreation of the Malta Test Station, General Electric's rocket research center that was located in Malta, New York. In addition to large artifacts like a plug nozzle rocket engine on loan from the Smithsonian and a recreation of a bunker used in observing rocket tests, we have a variety of archival photographs on display that tell the story of rocket research in New York.

What do you have in store for the rest of 2018?

We are in the process of renovating our World War II exhibit. Because WWII aviation is such a broad topic, we plan to personalize it by telling the story through groups and individuals with a New York connection, from New York aircraft manufacturers like Grumman and Curtiss to the men and women who built, maintained, and flew the planes that won the war. In addition to objects like a New York-made Norden bombsight, we'll feature archival photos and documents from our collection.

COLLECTIONS MANAGEMENT POLICY IS UPDATED

Under the direction of **Donna Esposito**, ESAM has updated its Collections Management Policy.

This is the third update to this living document, the previous update taking place in 2010. In the process of developing the update, the workgroup reviewed such items as the composition and responsibilities of the Curatorial & Acquisitions Committee, the processing and documentation of donations, notices to donors, disposal of items no longer needed, management of loans, care of the collection and support for researchers.

Once the policy is approved by the ESAM Board of Trustees it will be posted on ESAM's website.

ESAM ITEMS DISPLAYED AT THE SCHENECTADY COUNTY LIBRARY

On March 10 **Kaylee Gillespie, Joyce Newkirk and Bob Vore**, with support from **Pat Barrot**, installed at the main branch of the Schenectady County Library an exhibit of items and artifacts from the ESAM collection. The material remained on display during the rest of March. It was on display in two display cases. One case contained items that are designed to appeal to aviation enthusiasts of all ages, while the other case visually depicted the past, present and future of the museum.

See photos below and on page 7.



OUR VOLUNTEERS



**ARTWORK INSTALLED
IN THE
ADMINISTRATIVE
OFFICES HALLWAY**

Inspired by **Joyce Newkirk, Pat Barrot, Kaylee Gillespie** and **Donna Esposito**, and with the help of **Maury York, Larry McArthur** has installed artwork and photography in the second floor hallway of the Main Hangar Building administrative spaces. Most of the artwork had been in storage in the Research Center.

**Photo of Red Baron Stearman
Flight Demonstration Team**



LOCKHEED MARTIN F-22 RAPTOR

by Kevin Millington

I thought I would profile one of the most advanced military aircraft ever developed, Lockheed Martin's F-22 *Raptor*. The F-22 evolved from the Advanced Tactical Fighter competition of the early 1990's aimed at development of an air superiority fighter for the US Air Force intended to replace the great, long-serving F-15 *Eagle*.

Air dominance has proven essential in every modern conflict, from World War II to the 1991 Gulf War, and is a pre-condition for successful combat operations. Building on the success of the F-15, the F-22 will dominate the skies like no other fighter. The single-seat, twin-engine F-22 incorporates the very latest design, power plant, and avionics technologies which allow it to outperform any fighter in the world. Unlike previous fighters, the *Raptor* offers a unique combination of stealth



F-22 Raptor

characteristics, state-of-the-art avionics, and pure power. Through its design and the use of radar absorbing material, the F-22 is virtually undetectable by intercept radar, while its two Pratt and Whitney F119 turbofan engines, each providing up to 35,000 lbs. of thrust, allow it to achieve a top speed of Mach 2.4 (1,600 mph) and fly up to Mach 1.8 without the use of afterburners. Such ability is known as "super cruise" and reduces the plane's infra red heat signature, making it even more difficult to detect. The engines also feature vectored thrust, which allows the *Raptor* to be extremely maneuverable in close-range engagements. In addition, the Northrup Grumman AN/APG-77 electronically scanned array radar allows it to detect and engage enemy aircraft at long range. The *Raptor* is typically armed with six AIM-120 Advanced Medium Range Air-to-Air Missiles and two AIM-9 Sidewinder short range air-to-air missiles, together with a 20 mm. cannon for close range combat, all carried internally to maintain its stealth performance. In addition, the *Raptor* has a secondary air-to-ground capability, able to deliver precision guided bombs. To date, the F-22 has not been engaged in air-to-air combat, and while deployed to the Syria/Iraq region, combat operations have been limited to air-to-ground missions.

Such technology is not cheap, and the F-22 is one of the most expensive aircraft ever produced. Development costs totaled \$28 billion, and production costs were around \$200 million per aircraft. On the other hand, maintenance and operational costs have been less than that for the F-15. The *Raptor* initially entered service with the U.S. Air Force in 2003, and achieved full operational capability in December 2007.

THE CONCORDE MOVE: IT'S ALL HERE!

ESAM is closing in on completing the first phase of the Concorde project. The first phase includes moving the model, in parts, from the **Cradle of Aviation Museum** on Long Island to ESAM. We now have moved the entire model! Phase One also includes pre-installation preparation including engineering support, moving the Memorial Brick Plaza, site preparation and removing the Glassair from its stanchion in front of the museum.



**A fuselage section of the Concorde Model
after arriving at ESAM**

Phase Two of the project includes installing a foundation, reassembling the Concorde model, repainting the model and placing it on the base. Fencing, lighting and security will complete the installation. This is where the museum Restoration Crew has its opportunity to shine.

Phase Three is rehabilitating and painting the end of the hanger facing Route 50.

The museum appreciates the donations that have helped to cover the Phase One costs. Please be aware that Phases Two and Three also require significant funding support. Your donations made out to 'ESAM-Concorde' will help us to continue our work on this game-changing project.

BUS TRIP TO THE CRADLE OF AVIATION IS BEING PLANNED

If you are interested in taking a bus trip to the **Cradle of Aviation Museum** on Long Island please contact the office at 518-377-2191, extension 10 to let the museum know of your interest. The trip is currently planned for Saturday, June 30. The cost is



not yet firm. The expectation is that the bus would leave ESAM at about 7 am and return at 7 pm, and is expected to have 59 seats. Hope you can make it!

Contact **John Panoski** or the office for additional information as it becomes available.

ESAM THANKS THE FOLLOWING PEOPLE WHO HAVE ESTABLISHED OR RENEWED THEIR MUSEUM MEMBERSHIPS		
Galaxy Club (\$500)		
Dr. Philip R. Kennicott	Mr. Kevin Millington	
VIP Supporting (\$125)		
Ms. Donna Esposito	Mr. Douglas Sargent	Mr. Robert M. Vore
Small Business (\$100)		
Mr. Vance A. Barr		
Contributing (\$75)		
Mr. Charles Blodgett	Mr. & Mrs. James Buhrmaster	Mr. & Mrs. James & Judith Howard
Ms. Karen B Johnson	Mr. Richard W Murdock	
Libraries (\$50)		
Bethlehem Public Library	East Greenbush Community Library	Friends of the Stillwater Library
Guilderland Public Library	Kinderhook Memorial Library	
Family (\$50)		
Mr. & Mrs. Edward & Roberta Barili	Dr. Levon Bedrosian	Mr. Richard J. Bievenue
Mr. and Mrs. Tony Brewer	Mrs. Robert Crandall	Mr. Carleton Davis
Dimension Fabricators Inc	Mr. Daniel DeBellis	Mr. Thomas A. D'Ercole
Mr. Gary Gershon	Mr. Jeff Gorss	Mr. David A. Grimm
Mr. David Hamilton	Mr. Franz LaVigne	Mr. Dan Loegering
Mr. & Mrs. Ryan & Kristen Lund	Mr. Stephen Schmidt	Mr. Matthew Tully
	Ms. Gina Wierzbowski	
Individual (\$35)		
Mr. Peter Bergendahl	Mr. Joseph W Chamberlin	Mr. Gary W Dansfield
Ms. Maria Esposito	Ms. Loretta Gillen	Mr. Aaron Lauber
Mr. Ryan Sprague	Mr. Paul Toscino	Mr. James Uram
Senior Citizen and Student (\$30)		
Mr. Lonnie Clar	Mr. Michael Collins	Mr. Gerald Crawmer
Mr. Robert Creatura	Mr. Dennis Cusano	Mr. Brian Davis
Mr. Robert Dawes	Mr. Paul Dickson	Mr. Gary Jones
Mr. Robert Lavery	Mr. William J. Smith	Mr. Ronald Volungus
Mr. Dennis Wielt	Mr. James A Williams	

LETTERS LIKE THESE WE LIKE TO RECEIVE

Email received January 24, 2018

Subject: Thank you for being a Science Festival Partner!

Dear Kevin,

Thank you so much for being a partner of the 2017 Science Festival of the Capital Region! The Science Festival is such a huge undertaking and it is getting bigger every year. We so appreciate the support of Empire State Aerosciences Museum as we strive to convey the importance of STEAM by creating a fun, hands-on experience for the Capital Region community. We hope you will continue to support us on this mission and even consider becoming more involved as we work to make the Science Festival a truly regional event.

We also want to convey a special thank you to the partners who braved the very cold temperatures this year. We know the cold weather has made presenting difficult the past few years. To make the festival better for our partners and our visitors, we have decided to move the Science Festival to October 3 - 8, 2018. We look forward to seeing you then!

On a personal note, this is my last year as Science Festival Coordinator. It has been a pleasure working with you and I hope to work with you again on other projects in the future.

Sincerely,



Roshni Bhambhwani
Science Festival Coordinator

Email received January 28, 2018 from Jim Liguori

Subject: Fwd: Season 10 Has Premiered!

Hi

Some good news. The Fireball Run - Season 10 has been released on Amazon Prime. The Empire State Aerosciences Museum shows up Episode 19. Episode 20 is good too. It covers familiar places (to us) around the area.

The race to the museum was filmed in the fall of 2016. Kevin Millington did a great job as host and spokesman of the museum!

You must have Amazon Prime to view. The link below takes you to the program.

Thanks to everyone who helped get the museum in shape for filming!

Please share with people you know.

Thanks
Jim

Here's the direct link to Fireball Run on Amazon: <http://a.co/aJdevNB>

OUR VOLUNTEERS

Chief Operating Officer

March 14, 2018

From: The Executive Board of Trustees

We are pleased to announce that the position of Chief Operating Officer has been established at ESAM, effective March 1, 2018. Concurrently, we are very excited that Joyce Newkirk has accepted the challenge of taking on this new role, in addition to remaining Treasurer. This significant move will better align the museum and business operations with the Board of Trustees.

The position of C.O.O. will include the following responsibilities:

- Supervision of Museum Staff.
- Maintain appropriate fiscal procedures and controls.
- Organize and participate in regular meetings of museum committees.
- Inform the Board of Trustees of short and long term needs and issues at the museum.
- Provide recommendations to the Board of Trustees and museum committees related to enhancing museum programs.
- Establish on site office and be reasonably available to staff and volunteers.

The Chief Operating Officer shall report to the President, ESAM Board of Trustees.

Please join us in welcoming Joyce to her new position and as always, provide your support as she makes some of the critical decisions your museum needs to make going forward. We are very lucky to have her knowledge and business experience working for us!

Sincerely,

The Executive Board



The Museum in Action
John Kolwaite (left) working on the new World War II exhibit.
Gary Gershon (right) bringing the museum's tug back into operation.

OUR SUPPORTERS

RECENT ACQUISITIONS

- **James E. Wilson** donated a set of flight simulator yoke and pedals.
- **Ronald Pinkerton** donated 25 copies of Missiles and Rockets Magazine covering 1958-1962.
- **Mary E. Kuykendall Weber** donated five aviation textbooks and six aviation coffee table books.
- **Dennis Claypool** donated a 60" wingspan model of a 1950's trainer and accompanying paint and paper supplies.
- **Michael Collins** donated two balsa models: a Piper Super Cub and a Stearman PT-17
- **Kevin Millington** donated an Air Traffic Controller game.
- **Phillip Kennicott** donated an AAF cloth chart of Japan and the South China Sea from May 1945, a Martin P5M Patrol Seaplane book and an Elements of Navigation book.
- **Nancy D. Fitzroy** donated a number of items related to the Malta Test Station: a schematic of a Zeroing Apparatus for Inertially Guided Pilotless Aircraft filed 1/31/1951 by Roland V. Fitzroy, Jr. and James M. Cooper; Patent 3,182,224, along with copies and a written description of the patent; a brass wind tunnel test fin set in Plexiglas; an R. V. Fitzroy desk name plate and a matted color photograph of the GE Rocket Engine Test site at Malta Test Station.
- **Thomas Urquhart** donated a 17" LCD monitor.
- **In the name of John E. Matthews, Christine Matthews** donated a panoramic photo of Schenectady Airport in the late 1920s.
- **Eugene Gierka** donated a World War II Army Air Force Captain's uniform and cap (9th Air Force), and copies of personal reminiscences. He also donated US Campaign uniform ribbons, US Army Aviator uniform wings, and a photocopy of two pictures with captions showing Flight A, 39th Reconnaissance Squadron, 10th Photo Group, 9th Air Force.
- **Ray Davis** donated five reproduction blueprints of a Hughes airplane, a Whittle jet engine, a Goddard rocket, a space capsule and a space suit. Ray also donated the book US Bombers, B1-B70.
- **Jim Middleton** donated two Me-109 models.
- **Margaret Mackey** donated memorabilia of **Honora Beckett** including photos, a scrapbook, a flying cap and goggles.
- **Robert Mastro** donated a Radio Operator's Information File dated June 1945.
- **Nancy Michela** donated three books about women in aviation.
- **Donald Scavone** donated a two parachute containers and a drogue parachute
- **Robert Parmerter** donated 12 boxes of aviation books



**Aviatrix flying cap and goggles
donated by Margaret Mackey**

Correction; The last issue identified Robert Greg as the donor of aviation posters, calendars, books and models. The correct name is **Richard Greg**. We thank him for his donation.

The Empire State
Aerosciences Museum
is supported in part by :

Business Benefactors

All Seasons Equipment
Curtis Lumber Co., Inc.
1st National Bank of Scotia
Hannay Reels
LoDolce Machine Company
Price Chopper
Wal-Mart

Business Patrons

Allen Organ Co.
Richmor Aviation
USS Albany NCC-587

Business Supporters

Gil's Garage
First New York Federal Credit Union
Microsoft
Zonta Club of Schenectady

Friends of ESAM

The Family of Carl Battaglia*
Raymond Davis
Robert Eggleston
Mr. & Mrs. John Ericson
James Gargiulo
Mr. & Mrs. Roger Hannay
Chester & Ann Matthews
David Montana
*Mrs. Charles Moore
Mr. & Mrs. Robert Newkirk
Mr. & Mrs. Maurice York

Galaxy Club Members

Edward and Roberta Barili
Frank Hackert
John Hackert
James LoDolce
Kevin Millington
Ralph Rosenthal
*Mr. & Mrs. Jansz Vander Veer

* ESAM Charter Member

OUR SUPPORTERS

ADOPT AN AIRPLANE

Please consider adopting an airplane at ESAM.

By adopting an airplane you, your business or your group are committing yourselves to (1) wash the airplane at least once a year and (2) do some painting on the airplane. You will do the work in the museum's Air Park under the direction of an ESAM Restoration Crew member some-



Isaiah Gershon has adopted the S-2 Tracker

time when the weather is warm. You will be given free admission to the museum when you work on the adopted airplane and ESAM will post a sign indicating that you have adopted the airplane. If you or your group are interested in adopting an airplane at ESAM, please contact the office at 518-377-2191, extension 10.

Here are some of the details. Work will be performed under the direction of a member of the ESAM Restoration Crew. Museum liability insurance will cover you while working on the airplane. ESAM will provide all needed supplies. Volunteers will not be allowed to climb on the airplanes. Annual fees are \$50 for individuals and non-profit groups, and \$200 for businesses.

DONUTS FROM DUNKIN' DONUTS

Gary Gershon picking up the morning donuts for the restoration crew from the **1420 Broadway Dunkin Donuts** location in Schenectady. They have been supplying the donuts for quite a while at a reduced price. Thank you all for your kindness from the volunteers at ESAM.



ANNUAL APPEAL RAISES \$12,542

ESAM thanks the following donors to the 2017 Annual Appeal. The appeal was very successful, raising \$12,542.

Ms. Sarah Jean Adams	Mr. Dennis Andreas	Mr. Arthur A. Arro
Mr. Charles Atkins	Mr. & Mrs. Edward & Roberta Barili	Dr. Levon Bedrosian
Mrs. Deborah Beranek	Mr. Richard J. Bievenue	Mrs. Carol Borthwick
Mr. Larry Britt	Ms. Dolores C Carter	Mr. & Mrs. Robert Cheesman
Mr. Michael Corson	Mr. Raymond Davis	Mr. Daniel DeBellis
Dr. Michael De Petrillo, Jr.	Mr. Robert C. DeVries	Mr. Paul Dickson
Mr. Jack Ericson	Ms. Maria Esposito	Mr. & Mrs. Frank & Barb Felts
Mr. & Mrs. Paul & Susan Gillespie	Mr. Joseph Gorman	Mr. David Greenwood
Mr. David A. Grimm	Mr. Daniel Grygas	Dr. & Mrs. Richard Gullott
Mr. & Mrs. Carl Hackert	Mr. John L. Hackert	Mr. Robert Hall
Mr. Roger Hannay	Ms. Dorothy Harrigan-Stekeur	Mr. Martin G Hartmann
Mr. & Mrs. Ron and Karen Hosmer	Ms. Jeanne Jadwin	Ms. Karen B Johnson
Mr. Gary Jones	Mrs. Raymond Kaczmarczyk	Ms. Catherine Kelley
Ms. Patricia A. Kennedy	Mr. Ronald H. King	Mr. Thomas Koehler
Mr. Brian Lindner	Mr. Dan Loegering	Mr. and Mrs. Michael Lotano
Ms. Theresa Lozier	Mr. James Maas	Mr. Charles W Marshall
Mr. & Mrs. Bud Matthews	Mr. & Mrs. Lawrence McArthur	Mr. Matthew Mendleson
Mr. Kevin Millington	Mr. Francis Miner	Mr. Donald Morrett
Mr. & Mrs. Robert & Joyce Newkirk	Dr. Roy Oyangen DMD	Mr. Patrick Piccirilli
Mr. Mark Powers	Ms. Ronnie Quinn	Mr. & Mrs. Stephen Ruggles
Mr. Peter V. Russo	Mr. Mark Shalonis	Mr. Ryan Sprague
Mr. James Uram	Mr. Robert M. Vore	Mr. Thomas Walkowicz
Mrs. Chester Watson	Ms. Gina Wierzbowski	Mr. & Mr. Maurice York
Capitaland Motors Inc	Dimension Fabricators Inc	

ESAM Membership Application

Please check one: NEW MEMBERSHIP ____ RENEWAL ____

ANNUAL DUES:**INDIVIDUAL/FAMILY**

____ Senior Citizen/Student \$30
 ____ Individual \$35
 ____ Family \$50

VIP:

____ Contributing \$75
 ____ Supporting \$125
 ____ Sustaining \$275
 ____ Galaxy Club \$500
 ____ Friend of ESAM \$1,000

BUSINESS

____ Supporter \$250
 ____ Patron \$500
 ____ Benefactor \$1,000
 ____ Not for Profit/School \$100
 ____ Small Business \$100

Name _____
 Address _____
 City _____ State _____ Zip _____
 Phone: Home (____) _____
 Work (____) _____
 E-mail address _____

Please make your check payable to ESAM

**Mail to ESAM, 250 Rudy Chase Drive,
 Glenville, NY 12302**

If your company offers a matching gift program, please contact them with the amount of your gift.

Empire State Aerosciences Museum
250 Rudy Chase Drive
Glenville, NY 12302

NON PROFIT ORG.
US POSTAGE
PAID
ALBANY, NY
PERMIT # 793



HAPPENINGS AT THE AIR MUSEUM

MUSEUM HOURS –

Winter Hours: Friday through Sunday 10 AM to 4 PM
Summer Hours: Tuesday through Sunday 10 AM to 4 PM

General Museum Admission – \$8 per adult; \$6 per senior and military; \$5 age 6-16; under 6 free when accompanied by an adult

Simulated Reality Vehicle (SRV) – Ride: \$5

Jansz Vander Veer Research Center/Library Hours – Friday 9 AM to 12 noon & Saturday 10 AM to 12 noon

April 16, Monday - Board of Trustees Meeting: 7 PM. ESAM Community Room

April 21, Saturday - Pancake Breakfast: 8:30-10:30 AM. All you can eat: \$8 (\$4 for kids under 12). Menu varies with pancakes or French toast, sausage, eggs, applesauce, juice and coffee. The public is invited to attend.
Pilots: Tower Frequency 121.30; Ground 121.90. Land at Schenectady County Airport and taxi to Richmor Aviation North. Browse the Museum beginning at 10 AM. Museum Admission: \$8 per adult; \$6 per senior and military; \$5 age 6-16; under 6 free when accompanied by an adult.

April 21, Saturday - Thiers Memorial Fly-In and Car Show: 10 AM-3 PM.

April 21, Saturday - Schenectady County Community College Aviation Expo: 1 PM-3 PM

May 19 Saturday - Pancake Breakfast: 8:30-10:30 AM. All you can eat: \$8 (\$4 for kids under 12). Menu varies with pancakes or French toast, sausage, eggs, applesauce, juice and coffee. The public is invited to attend.
Pilots: Tower Frequency 121.30; Ground 121.90. Land at Schenectady County Airport and taxi to Richmor Aviation North. Browse the Museum beginning at 10 AM. Museum Admission: \$8 per adult; \$6 per senior and military; \$5 age 6-16; under 6 free when accompanied by an adult.

May 21 Monday - Board of Trustees Meeting: 7 PM. ESAM Community Room

June 16, Saturday - Pancake Breakfast: 8:30-10:30 AM. All you can eat: \$8 (\$4 for kids under 12). Menu varies with pancakes or French toast, sausage, eggs, applesauce, juice and coffee. The public is invited to attend.
Pilots: Tower Frequency 121.30; Ground 121.90. Land at Schenectady County Airport and taxi to Richmor Aviation North. Browse the Museum beginning at 10 AM. Museum Admission: \$8 per adult; \$6 per senior and military; \$5 age 6-16; under 6 free when accompanied by an adult.

June 30, Saturday - Bus Trip to Cradle of Aviation Museum on Long Island. Check with the ESAM Office for cost and timing.

July 16, Monday - Board of Trustees Meeting: 7 PM. ESAM Community Room

July 21, Saturday - Pancake Breakfast: 8:30-10:30 AM. All you can eat: \$8 (\$4 for kids under 12). Menu varies with pancakes or French toast, sausage, eggs, applesauce, juice and coffee. The public is invited to attend.
Pilots: Tower Frequency 121.30; Ground 121.90. Land at Schenectady County Airport and taxi to Richmor Aviation North. Browse the Museum beginning at 10 AM. Museum Admission: \$8 per adult; \$6 per senior and military; \$5 age 6-16; under 6 free when accompanied by an adult.

August 20-24, Monday-Friday - STEM Program: 8:30 AM-Noon. Day program for youth.

September 15, Saturday - Hangar Dance: details to be announced