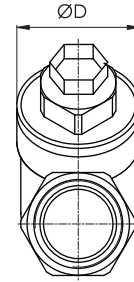
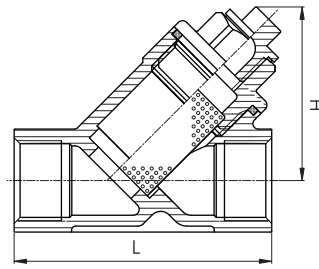


# STRAINER



THREADED END, 1/4" - 3"

G1FM404-17-R0

## TYPE FM 404

- Y-STRAINER, 800 PSI
- BODY ASTM-A351-CF8M
- MAXIMUM PRESSURE 800PSI
- MAXIMUM WORKING TEMPERATURE 230°C
- SCREEN ANSI 304
- OPTION: 600 PSI

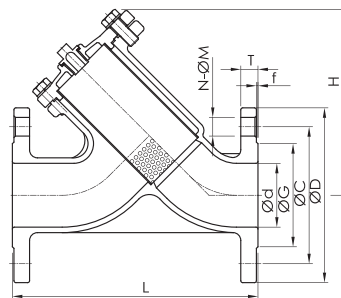
### Dimensions

Unit :mm

SIZE	L	H	ØD	WEIGHT KGS
1/4"	65	45	31	0.26
3/8"	65	45	31	0.23
1/2"	65	45	31	0.24
3/4"	80	53	36	0.36
1"	90	68	45	0.69
1-1/4"	105	72	50	0.86
1-1/2"	120	80	59	1.35
2"	140	97	75	2.37
2-1/2"	170	112	95	4.73
3"	195	129	111	7.26

3" - 12"

1/2" - 2 1/2"



### SCREEN SPECIFICATION

SIZE	PERFORATION
1/2" - 1-1/4"	1.5MM
1-1/2" - 12"	2MM

FLANGED END, 1/2" - 12"

G1FM414-17-R0

## TYPE FM 414

- Y-STRAINER, ANSI 150LBS
- BODY ASTM-A351-CF8M/ CF8, ASTM-A216-WCB
- END FLANGE ANSI B16.5
- DESIGN ANSI B16.34, TEST API 598
- OPTION: JIS 10K/ 20K/ ANSI 300LBS/ DIN PN16

### Dimensions

Unit :mm

SIZE	Ød	L	H	ØD	ØC	ØG	f	T	N-ØM
1/2"	15	120	85	89	60.5	35	1.6	12.1	4-Ø16
3/4"	20	140	87	98	70	43	1.6	12.1	4-Ø16
1"	25	150	114	108	79.5	51	1.6	12.1	4-Ø16
1-1/2"	40	190	135	127	98.5	73	1.6	14.3	4-Ø16
2"	50	210	155	152	120.5	92	1.6	15.9	4-Ø19
2-1/2"	65	250	189	178	139.5	105	1.6	17.5	4-Ø19
3"	80	280	200	190	152.5	127	1.6	19.1	4-Ø19
4"	100	340	232	229	190.5	157	1.6	23.9	8-Ø19
5"	125	380	274	254	216	186	1.6	23.9	8-Ø22
6"	150	420	326	279	241.5	216	1.6	25.4	8-Ø22
8"	200	500	397	343	298.5	270	1.6	28.6	8-Ø22
10"	250	730	512	406	362	324	1.6	30.2	12-Ø25
12"	300	850	562	483	432	381	1.6	31.8	12-Ø25