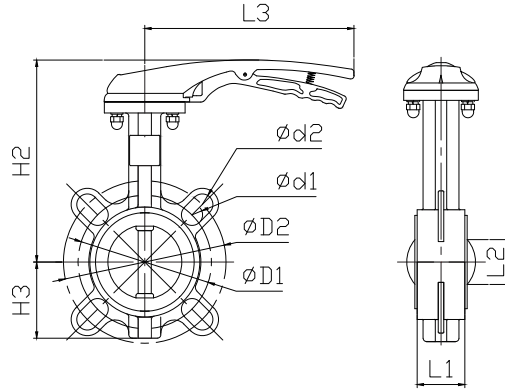


BUTTERFLY VALVE



FM811-L/SS304/SS316-R0

WITH HANDLE

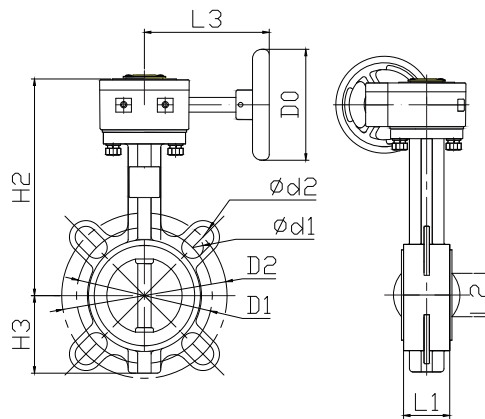
FM811-L SS304 FM811-L SS316

- BODY: 304 STAINLESS STEEL, 316 STAINLESS STEEL
- DISC: 304 STAINLESS STEEL, 316 STAINLESS STEEL
- SEAT: EPDM, NBR
- STEM: 416 STAINLESS STEEL, 304 STAINLESS STEEL, 316 STAINLESS STEEL
- LEVER HANDLE: ALUMINIUM ALLOY
- WORKING PRESSURE: 10KGF/CM²
- APPLICABLE MEDIUM: WATER, SEWAGE, OIL, AIR
- APPLICABLE TEMPERATURE: -10°C ~110°C

Dimensions

Unit :mm

SIZE	H2	H3	ØD1 / ØD2	Ød1 / Ød2	L1	L2	L3	KG
DN50	183	59	107 125	19 19	42	32	176	2.38
DN65	197	68	119 145	19 19	45	47	176	2.84
DN80	209	89	154.5 155.75	23 24	45	65	176	3.40
DN100	233	103	175 190.5	19 19	52	91	215	5.01
DN125	254	117	210 216	23 23	55	112	260	6.35
DN150	273	130	240.25 240.25	23.5 23.5	56	146	260	7.81



FM811-G/SS304/SS316-R0

WITH GEAR OPERATOR

FM811-G SS304 FM811-G SS316

- BODY: 304 STAINLESS STEEL, 316 STAINLESS STEEL
- DISC: 304 STAINLESS STEEL, 316 STAINLESS STEEL
- SEAT: EPDM, NBR
- STEM: 416 STAINLESS STEEL, 304 STAINLESS STEEL, 316 STAINLESS STEEL
- WORM GEAR BOX: ALUMINIUM ALLOY, 304 STAINLESS STEEL
- HANDWHEEL: STEEL, 304 STAINLESS STEEL
- WORKING PRESSURE: 10KGF/CM²
- APPLICABLE MEDIUM: WATER, SEWAGE, OIL, AIR
- APPLICABLE TEMPERATURE: -10°C ~110°C

Dimensions

Unit :mm

SIZE	H2	H3	ØD1 / ØD2	Ød1 / Ød2	L1	L2	L3	D0	KG
DN50	181	59	107 125	19 19	42	32	148	136	5.7
DN65	195	68	119 145	19 19	45	47	148	136	6.1
DN80	207	89	154 155	23 24	45	65	148	136	6.7
DN100	229	103	175 190	19 19	52	91	148	136	8.2
DN125	250	117	210 216	23 23	55	112	148	136	9.5
DN150	269	130	240.25 240.25	23.5 23.5	56	146	148	136	11.5
DN200	302	164	292 296	24.6 25	61	194	193	263	20
DN250	342	195	357 357	30 30	66	242	193	263	28
DN300	385	232	400 432	25 26	77	292	210	263	39