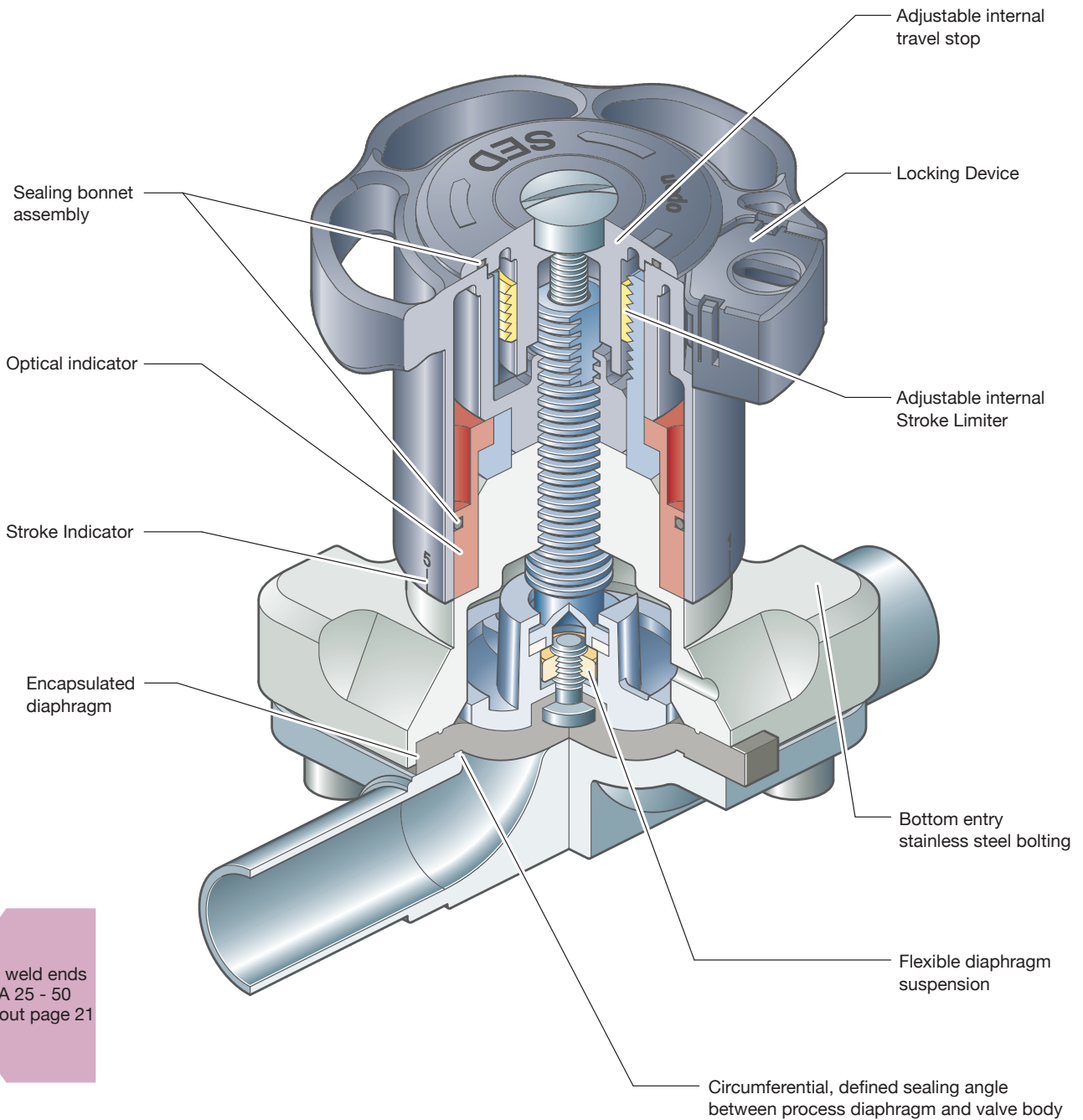


KMA 905

Manual Valve DN 15 - 50 mm (3/4" - 2 1/2")



Butt weld ends
MA 25 - 50
Fold out page 21



Introduction Video
<http://www.sed-flowcontrol.com/en/service/movies>

Singapore Sales Enquiry:
Email: sales@pipeline.com.sg
Tel: (65) 6570 0310

Myanmar Sales Enquiry:
Email: sales@pipeline-mm.com
Tel: (95) 9509 5758



KMA 905

Manual Valve DN 15 - 50 mm (3/4" - 2 1/2")



S01



S11

Features

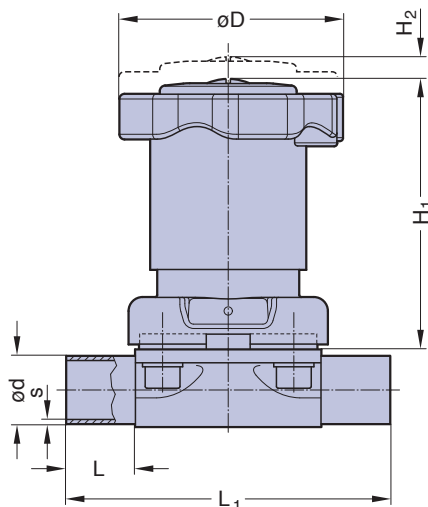
- Stainless steel bonnet and plastic hand wheel
- Rising hand wheel with optical indicator and stroke indicator
- Sealed bonnet
- Internal travel stop
- Locking device
- CDSA sealing concept, see page 32
- Flexible diaphragm suspension
- Encapsulated diaphragm

Optional

- Adjustable internal stroke limiter
- U-Lock for hand wheel
- Assembly of proximity switches
- Manual diaphragm Valve with plastic hand wheel is suitable for a limited number of cycles of autoclaving.

Technical Data

- Control function: Manually operated
 Max. working pressure: 10 bar (150 psi)
 Max. working temperature: 160°C (320°F) dependent on application
 Diaphragm material: EPDM or PTFE
 Valve body material: Forged 1.4435/ 316L ASME/BPE
 Investment cast 1.4435/ 316L
 Other Alloys
- End connection: Butt weld ends see fold out page 21
 Clamps and flanges see page 22 and 23
 Special ends
- Bonnets suitable for: Two-Way bodies
 Welded configurations
 T- bodies
 Multiport bodies
 Tank bottom bodies
- Flow rate: Kv in m³/h (Cv in GPM) see page 9
 Diaphragm size: MA see table
 Technical data also valid for multiport valve.



Butt weld ends
 MA 25 - 50
 Fold out page 21

DN (mm)	MA	Dimensions (mm)					Total weight ca. (kg)	
		L	L ₁	H ₁	H ₂	D	Investment cast	Forged
15-25	25	25	120	100	10	84	1,4	1,6
32-40	40	25	153	119	16	112	2,8	3,0
50	50	30	173	136	20	135	3,8	4,6

Valve type overview see page 26 and 27.
 Ordering key see page 62 and 63.