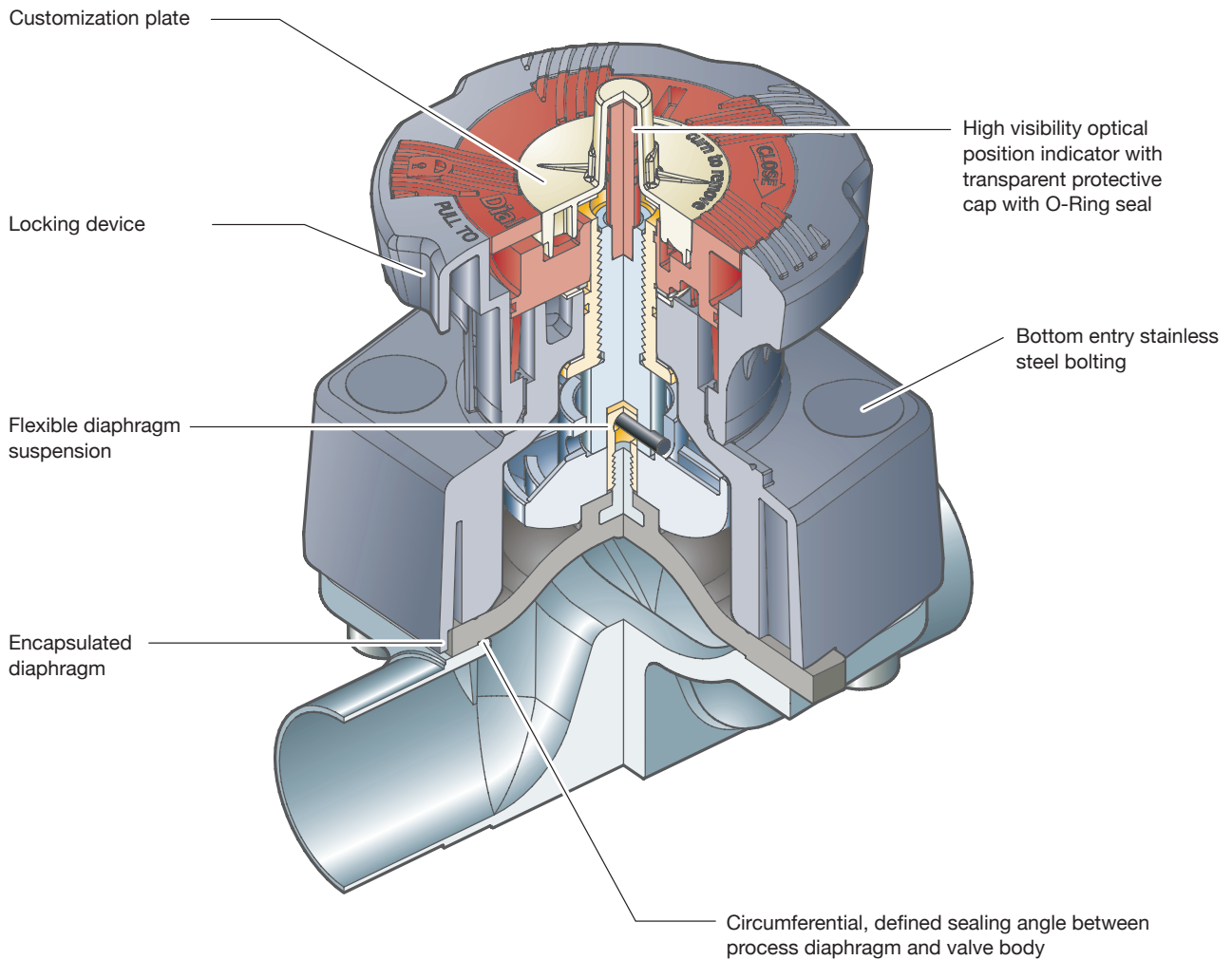


KMD 982

Manual Valve DN 15 - 50 mm (3/4" - 2 1/2")



Butt weld ends
MA 25 - 50
Fold out page 21

KMD 982

Manual Valve DN 15 - 50 mm (3/4" - 2 1/2")



Features

- Plastic bonnet and plastic hand wheel
- Non rising hand wheel with optical indicator
- Flexible diaphragm suspension
- Encapsulated diaphragm
- CDSA sealing concept, see page 32
- Locking device

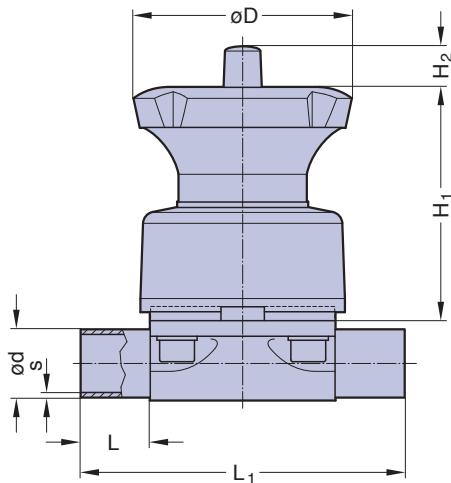
The system can be engaged by simply lifting the handwheel once the required position has been reached.

To release the operating mechanism, simply return the handwheel to its previous position by pushing it downwards.

When the system is in the locked position, u-lock can be installed to protect the plant against unwanted interference.

Optional

- Adjustable stroke limiter on top



Technical Data

Control function:	Manually operated
Max. working pressure:	10 bar (150 psi)
Max. working temperature:	80°C (176°F)
	dependent on application
Diaphragm material:	EPDM or PTFE
Valve body material:	Forged 1.4435/ 316L ASME/BPE
	Investment cast 1.4435/ 316L
	Other Alloys
End connection:	Butt weld ends see fold out page 21
	Clamps and flanges see page 22 and 23
	Special ends
Suitable for:	Two-Way bodies,
	otherwise depending on design
Flow rate:	Kv in m ³ /h (Cv in GPM) see page 9
Diaphragm size:	MA see table

Butt weld ends
MA 25 - 50
Fold out page 21

DN (mm)	MA	Dimensions (mm)					Total weight ca. (kg)	
		L	L ₁	H ₁	H ₂	D	Investment cast	Forged
15-25	25	25	120	85	15	154	0,87	0,96
32-40	40	25	153	102	24	194	1,59	1,83
50	50	30	173	117	24	224	2,30	3,40

Valve type overview see page 26 and 27.
Ordering key see page 62 and 63.