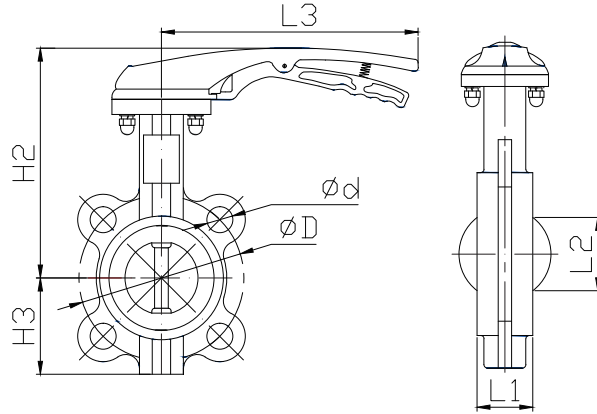


BUTTERFLY VALVE



FM811-L/CAST IRON-R0

WITH HANDLE

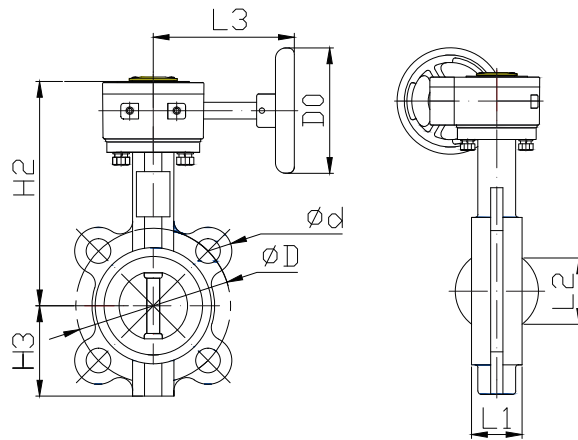
FM811-L CAST IRON

- BODY: FC200 CAST IRON
- DISC: DUCTILE IRON, 304 STAINLESS STEEL, 316 STAINLESS STEEL
- SEAT: EPDM, NBR
- STEM: 416 STAINLESS STEEL, 304 STAINLESS STEEL
- LEVER HANDLE: ALUMINIUM ALLOY, CAST IRON
- WORKING PRESSURE: 10KG/CM²
- APPLICABLE MEDIUM: WATER, SEWAGE, OIL, AIR
- APPLICABLE TEMPERATURE: -10°C ~110°C

Dimensions

Unit :mm

SIZE	H2	H3	Ød	ØD	L1	L2	L3	KG
DN50	180	70	19	120	42	32	176	2.5
DN65	192	80	19	140	45	47	176	2.9
DN80	205	92	19	150	45	65	176	3.5
DN100	229	107	19	175	52	91	215	5.1
DN125	250	121	23	210	55	112	260	6.6
DN150	260	134	23	240	56	146	260	8.4
DN200	305	167	25	295	61	194	260	12.5



FM811-G/CAST-IRON-R0

WITH GEAR OPERATOR

FM811-G CAST IRON

- BODY: FC200 CAST IRON
- DISC: DUCTILE IRON, 304 STAINLESS STEEL, 316 STAINLESS STEEL
- SEAT: EPDM, NBR
- STEM: 416 STAINLESS STEEL, 304 STAINLESS STEEL
- WORM GEAR BOX: ALUMINIUM ALLOY, CAST IRON
- HANDWHEEL: STEEL, CASTING IRON
- WORKING PRESSURE: 10KG/CM²
- APPLICABLE MEDIUM: WATER, SEWAGE, OIL, AIR
- APPLICABLE TEMPERATURE: -10°C ~110°C

Dimensions

Unit :mm

SIZE	H2	H3	Ød	ØD	L1	L2	L3	D0	KG
DN50	192	70	20	125	42	32	148	136	5
DN65	204	80	20	145	45	47	148	136	5.46
DN80	21	92	20	160	45	65	148	136	6.02
DN100	232	107	20	180	52	91	148	136	7.29
DN125	252	121	20	210	55	112	148	136	8.53
DN150	272	134	23	240	56	146	148	136	9.99
DN200	317	170	23	295	61	194	193	263	17.76
DN250	356	208	23	350	66	242	193	263	23.48
DN300	381	240	23	400	77	292	210	263	32.91
DN350	419	265	23	460	77	325	210	263	44.74
DN400	475	297	26	515	102	380	301	400	75.7
DN450	510	331	26	565	114	428	301	400	90.1
DN500	550	361	26	620	130.3	474	317	300	122.55
DN600	672	459	30	725	152	573	334	300	245.75