



Human Centromere Protein A (CENPA)

Origin:	Recombinant	Cat. No.:	41610
Tag:	N-terminal 6xHis	Size:	0.1 mg
Source:	<i>Spodoptera frugiperda</i> Sf9	Purity:	>95%
Other Names:	CENPA	Species:	Human

Description

Expressed in insect Sf9 cells with total 164 AA. Mw: 19.0 KDa (calculated).
N-terminal 6xHis-tag and TEV cleavage site, 25 extra AA (highlighted).

Recombinant antigen for research use or manufacturing only.

Introduction to the Molecule

Centromere proteins are a group of proteins which form and/or mediate the function of centromeres, the central structures of chromosomes to which spindle fibers/microtubuli attach and pull the chromosomes apart in cell division. The centromere protein A (CENPA) is one of them.

CENPA contains a histone H3 related histone fold domain and can be incorporated into centromeric chromatin due to its histone-like properties. Anti-CENPA autoantibodies are an important marker for diagnosis of Scleroderma / CREST syndrome.

Immunological Function

As an autoantigen, CENP-A binds with IgG-type human auto-antibodies.

Amino Acid Sequence

MSYYHHHHHDYDIPPTTENLYFQGAGPRRRSRKPEAPRRRSPSPPTPTPGPSRRGPSLGASSHQHS
RRRQGWLKEIRKLQKSTHLLIRKLFP SRLAREICVKFTRGVDFNWQAQALLALQEAAEAFVLVHLF
EDAYLLTLHAGRVTLFPKDVQLARRIRGLEEGLG

Applications

Standard ELISA test, line/dot assay and microarray assay with positive/negative sera panels.

Formulation

Lyophilized at 1 mg/mL in storage buffer (20mM Tris, 150mM NaCl, 8M Urea, PH8.0).

Reconstitution

Add deionized water to prepare a working stock solution of approximately 1 mg/mL and let the lyophilized pellet dissolve completely.





Storage

Store lyophilized protein at -20°C . Aliquot reconstituted protein and store at -80°C . Avoid repeated freezing /thawing cycles.

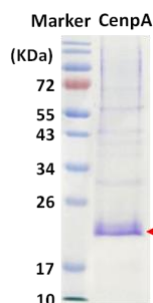
Quality Control Test

BCA to determine quantity of the protein.

SDS PAGE to determine purity of the protein.

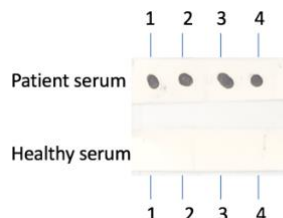
Immunodot analysis to determine functionality of protein.

SDS-PAGE Gel



Dot blot assay

Dot blot analysis of CENPA



Analysis of serum from healthy subjects and patients. Recombinant autoantigens were utilized in this dot-blot assay for validation

Contact Us

- Website: www.immunodiagnostics.com.hk
- E-mail: info@immunodiagnostics.com.hk
- Tel: (+852) 2831 5526; 2831 5508
- Fax: (+852) 2816 2095

