



Human TROVE domain family member 2 (SSA/Ro60)

Origin:	Recombinant	Cat. No.:	41580
Tag:	N-terminal 6xHis	Size:	0.1 mg
Source:	<i>Spodoptera frugiperda</i> Sf9	Purity:	>80%
Other Names:	TROVE2, SSA/Ro60, Ro60	Species:	Human

Description

Expressed in insect Sf9 cells with total 562 AA. Mw: 63.6 kDa (calculated). N-terminal 6xHis-tag and TEV cleavage site, 25 extra AA (highlighted).

Recombinant antigen for research use or manufacturing only.

Introduction to the Molecule

Ro/SSA ribonucleoproteins are involved in RNA quality control and cellular stress response to UV irradiation, and comprise of a single polypeptide and four small RNA molecules including the 60 kDa Ro protein. Ro/SSA interacts with autoantigens in patients with Sjogren syndrome and systemic lupus erythematosus.

Immunological Function

As an autoantigen, SSA/Ro60 binds with IgG-type human auto-antibodies.

Amino Acid Sequence

MSYYHHHHHDYDIPTTENLYFQGAEESVNQMQLNEKQIANSQDGYVWQVTDNMNRLHRFLCFGS
EGGTYIYKEQKLGLENAEALIRLIEDGRGCEVIQEIKSFSQEGRTTKQEPMLFALAICSQCSDIS
TKQAQAFKAVSEVCRIPTHLFTFIQFKDLKESMKCGMWGRALRKAIADWYNEKGGMALALAVTKY
KQRNGWSHKDLLRLSHLKPSSSEGLAIVTKYITKGWKEVHELYKEKALSVETEKLLKYLEAVEKVK
RTRDELEVIHLIEEHRLVREHLLTNHLKSKEVWKALLQEMPLTALLRNLGKMTANSVLEPGNSEV
SLVCEKLCNEKLLKKARIHPFHILIALETYKTGHGLRGKLKWRPDEEILKALDAAFYKTFKTVEP
TGKRFLAVDVSASMNQRLVLSILNASTVAAAMCMVVRTEKDSYVVAFSDEMVPVPTTDMTLQ
QVLMAMSQIPAGGTDCSLPMIWAQKTNTPADVFIVFTDNETFAGGVHPIALREYRKMDIPAKL
IVCGMTSNGFTIADPDDRGMLDMCGFDTGALDVIRNFTLDMI

Applications

Standard ELISA test, line/dot assay and microarray assay with positive/negative sera panels.

Formulation

Lyophilized at 1 mg/mL in storage buffer (50mM Tris, 300-500mM NaCl, 10% Glycerol, pH8.0).





Reconstitution

Add deionized water to prepare a working stock solution of approximately 1 mg/mL and let the lyophilized pellet dissolve completely.

Storage

Store lyophilized protein at -20°C . Aliquot reconstituted protein and store at -80°C . Avoid repeated freezing /thawing cycles.

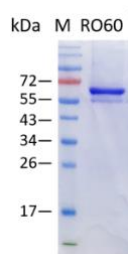
Quality Control Test

BCA to determine quantity of the protein.

SDS PAGE to determine purity of the protein.

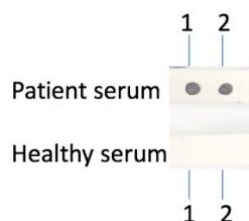
Immunodot analysis to determine functionality of protein.

SDS-PAGE Gel



Dot blot assay

Dot blot analysis of RO60



Analysis of serum from healthy subjects and patients. Recombinant autoantigens were utilized in this dot-blot assay for validation

Contact Us

- Website: www.immunodiagnostics.com.hk
- E-mail: info@immunodiagnostics.com.hk
- Tel: (+852) 2831 5526; 2831 5508
- Fax: (+852) 2816 2095

