

Join Tampa Audubon Society in **NEW MEXICO** **Feb 15-22, 2020**

We're going looking for winter! As in wintering waterfowl by the thousands—cranes, geese and ducks. Plus sparrows, all 3 species of rosy-finches, and a wide range of other western, winter and higher elevation species. Come join us for a trip through New Mexico's central corridor on a tour organized by Wings Birding Tours.

Itinerary

Feb 15—6 pm Meet our leader, Raymond VanBuskirk, in Albuquerque, NM for dinner and coordination.

Feb 16—Birding nearby canyons of juniper and montane scrub we're likely to find Curve-billed and Crissal Thrashers, Cactus and Rock Wren and Townsend's Solitaire. At the Rio Grande Nature Center, besides plenty of waterfowl, Black-capped and Mountain Chickadees plus finches and sparrows. Drive to Socorro, via Valle de Oro NWR with the largest wintering flocks of Richardson's Cackling Geese and more. Late afternoon stop at



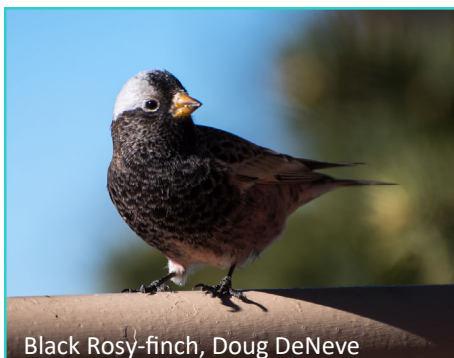
Snow Geese, by Doug DeNeve

Bosque del Apache if we can.

Feb 17—Bosque del Apache,

for thousands of Snow and Ross's Geese taking off at dawn, then explore the refuge for Roadrunners, sparrows, raptors and more.

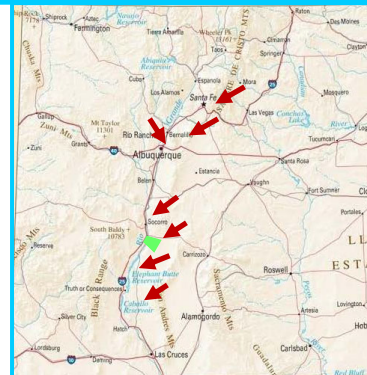
Feb 18—Percha Dam and Caballo Lake areas are Chihuahuan Desert scrub, so Gambel's Quail, Verdin, Black and Say's Phoebe, Pyrrhuloxia and Phainopepla will be on target. Elephant Butte may bring more waterbirds, and the feeding station at Las Animas Creek should have Bridled Titmouse and Acorn Woodpeckers.



Black Rosy-finch, Doug DeNeve

to Santa Fe for the night, watching for Golden Eagles on the way.

Feb 20—We head up the mountain to Santa Fe Ski Valley for high elevation birds such as Clark's Nutcracker, Gray Jay, Pine Grosbeak and hopefully the elusive Dusky Grouse. Then north again to Las Vegas NWR for Rough-legged Hawks, Tundra Swans and Black-billed Magpie. Depending on the weather we may have time to search for American Dippers in the Rio Grande gorge.



Registration: mail to Tampa Audubon Society, PO Box 320025, Tampa, FL 33679 with deposit donation of \$75. Check made out to Tampa Audubon Society. **Note: N Mex 2020**

Name: _____ email: _____

Address: _____

City

ZIP

Single __ Double __ Rooming with: _____ Phone: _____

You will receive a receipt for the donation to TAS as confirmation, and instructions on how to pay rest of trip costs once your name is sent to them.



Mountain Chickadee, D DeN.

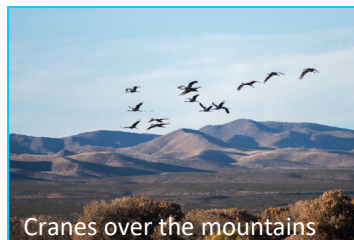
Feb 21—Sandia Crest is another high-elevation area, where our targets will be all 3 species of Rosy-finch, as well as Northern Pygmy Owl, Steller's Jay, Red-breasted and Pygmy Nuthatches and more.

Feb 22—flights home from Albuquerque

Trip Information

Temperatures in the higher elevations can be in the mid-20s in February, so be prepared for cold. Lower elevations can expect midday highs in the 60s. Wind is likely, rain and snow are possible, especially at higher elevations.

We will encounter a wide range of altitudes on this trip, as the Sandia Crest House is 10,678 ft. above sea level. Any activities undertaken by the group at higher altitudes will be paced in accordance with the rarified air. The majority of the walking will be on flat terrain but it could be a bit icy, or on packed snow at times. There will be an optional .5 mile walk while at the crest for American Three-toed Woodpecker which will go slightly downhill and is often on packed snow. Sturdy shoes and walking sticks are probably a good idea.



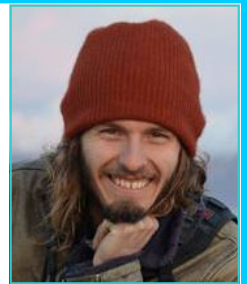
Cranes over the mountains

Our Leader

Raymond VanBuskirk is a native of New Mexico. He

Www.TampaAudubon.org PO Box 320025, Tampa, FL 33679

co-owns Brant Nature Tours. His career experience also includes multiple ornithological field research positions, including two summers as seabird research technician on the Arctic Ocean, head Rosy-Finch researcher with Rio Grande Bird Research Inc., past president of the Central New Mexico Audubon Society, and board member of Western Field Ornithologists. His latest new job is manager of Redstart Birding and co-host of the BirdWire podcast from Bird Watchers Digest.



Costs

Deposit donation to TAS is \$75 per person. The cost for the trip for a **minimum of 9** persons, is: Double Occupancy: \$2,000; Single supplement: \$552 Charge to pay with credit card is 4% additional. Cost will increase \$250 if fewer than 9 register.

This covers all travel from Albuquerque back to Albuquerque, meals from dinner on Feb 15 through dinner on Feb 21, motels, and transportation to/from airport. Tips for the leader are not included, nor is travel arriving to/departing from New Mexico, nor personal items such as laundry, phone calls, etc.

Registration is with Tampa Audubon using the form above and \$75 check made out to Tampa Audubon, or on the www.tampaaudubon.org website. Once registered you will be sent the link to register with Wings and pay them directly.

For questions, full bird list or more details, contact Mary at mary.keith@tampaaudubon.org.