

“whatever you do, do it all
for the glory of God”

1 CORINTHIANS 10.31

CONTACT

BUILDING FOR THE FUTURE

✉ building@dundonald.org

🌐 dundonaldbuilds.org

FOLLOW

BUILDING FOR THE FUTURE

📘 [dundonaldbuilds](https://www.facebook.com/dundonaldbuilds)

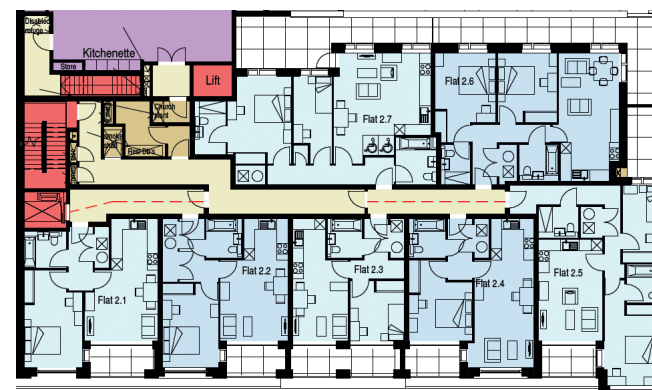
📷 [dundonaldbuilds](https://www.instagram.com/dundonaldbuilds)

Dundonald
CHURCH

**BUILDING FOR
THE FUTURE**

A UNIQUE OPPORTUNITY TO HELP WITH THE BUILDING FOR THE FUTURE PROJECT!

As we continue to develop the internal design of the church there is now an exciting opportunity for church members to consider if they would be interested in buying an apartment.



Floor plan:
second floor

Configuration

In total, there are 18 apartments over the second, third and fourth floors. The apartments are mix of one bedroom and two bedroom homes. They will be accessed via stairs or a lift separate from the main church.

The one bedroom apartments will be approximately 420-540 square feet with an expected cost in the range of £340k-£425k. The two bedroom apartments will be approximately 660-750 square feet with an expected cost in the range of £470k-£520k.

Specification

Whilst the design of the apartments is still to be finalised each apartment will have a bathroom, kitchen/dining room, bedroom(s) and access to a balcony.

Next Steps...

How you could get involved

Buying an apartment during the BftF Project has many benefits for Dundonald Church including guaranteeing christian neighbours and reduced marketing costs.

There are a number of different ways you might prayerfully consider being involved...

Buy and move in!

Buy off plan and once the building is complete, simply move in!

What better way to help with the BftF project with the added benefit of an easy commute on Sundays!

Buy to let

Buy off plan as an investment for the future and in the immediate term rent the apartment at market rates, or better still at a reduced rate for church apprentices!

Be part of a collective

If you'd like to help the BftF project and would like to invest in property and are interested in supporting our apprenticeship scheme but can't do it alone, form a collective and do it with some church friends!

If you have any questions, would like to discuss things further or would like to register interest please email building@dundonald.org



Living Space

- Engineered wood flooring throughout
- Underfloor heating throughout
- Painted walls and ceiling



Kitchen & Dining

- Engineered wood flooring throughout
- Tiled kitchen splashbacks
- Integrated handleless units with concrete finish worktops
- Zanussi integrated appliances including oven, hob, hood, fridge, freezer, dishwasher and washer/dryer



Bedroom & Bathroom

- Carpeted flooring in bedrooms
- Ceramic stone effect flooring tiles in bathrooms and en-suite toilets
- Full height bathroom wall tiling and mirrored cupboards
- Integrated wardrobes, mirror fronted with soft closures
- Electrically heated towel rails

Indicative images

