

# RoughinBox™

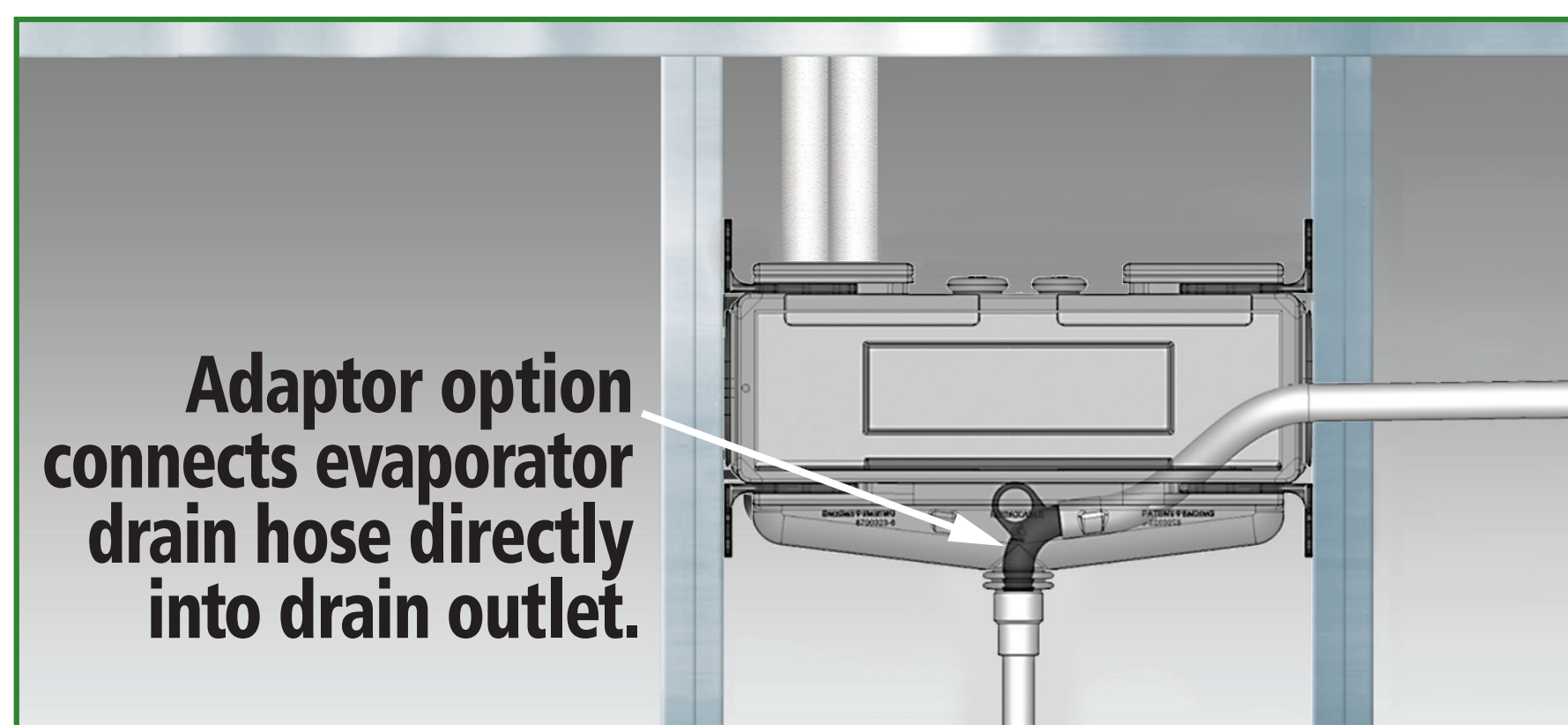
Wall mounting a minisplit  
in new construction, add on or to the studs rehab?  
Everybody knows, when you rough in a washer or dryer...



you use  
one of  
these.

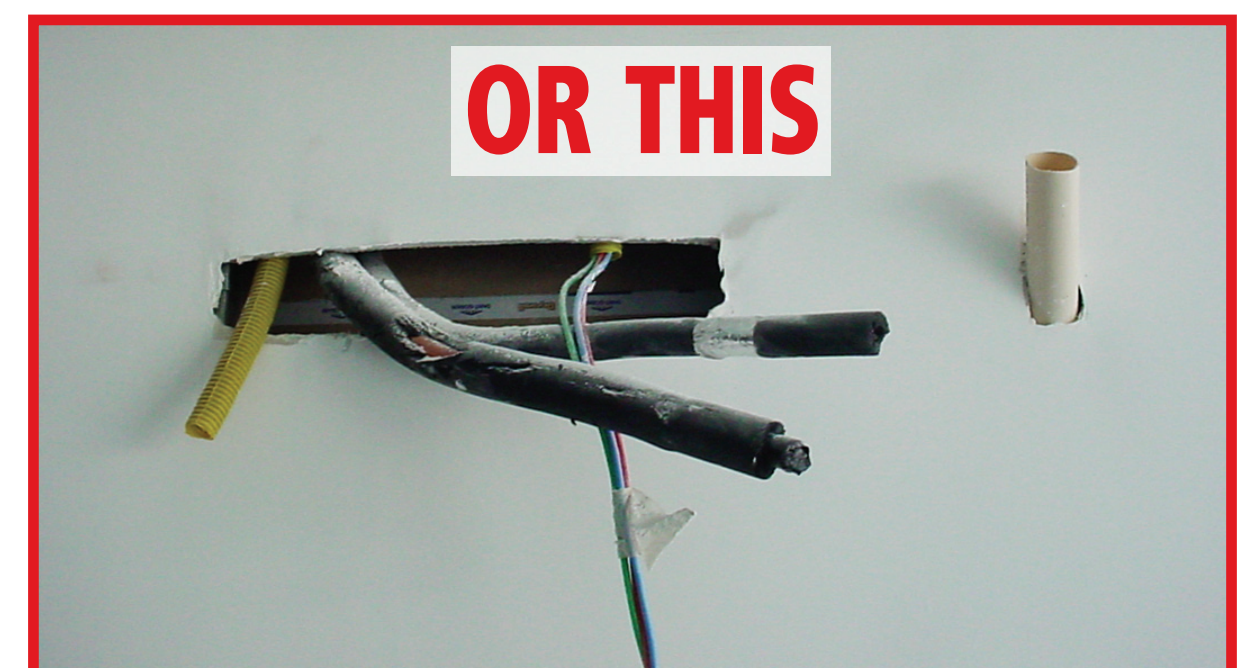
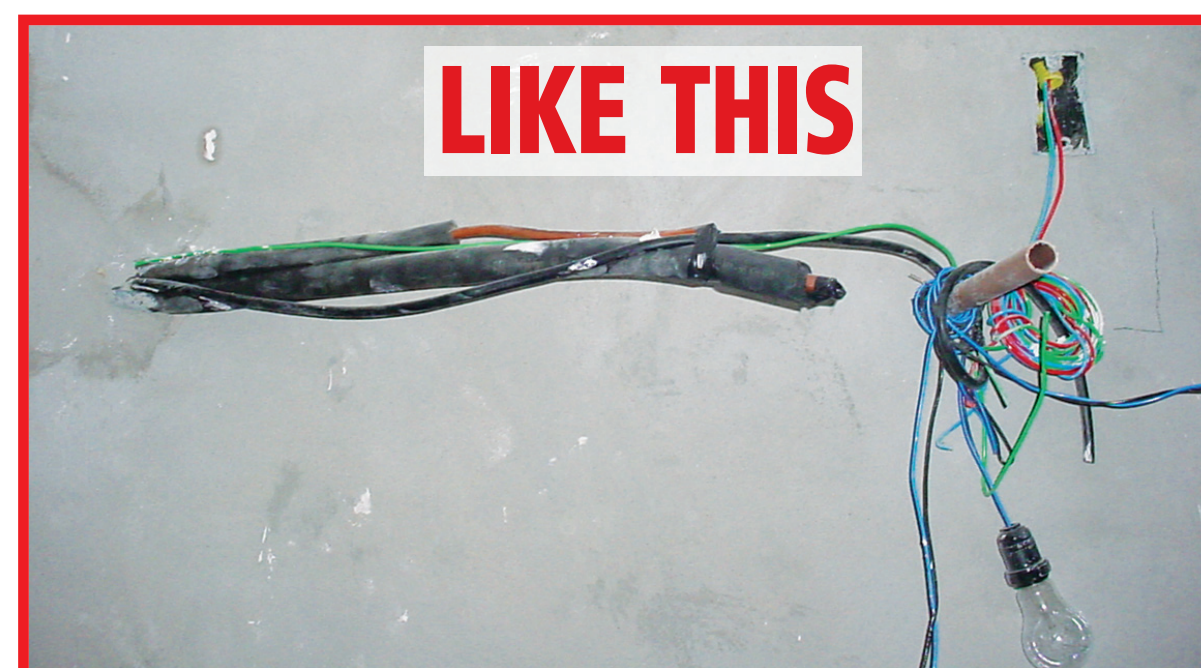


**SO WHY NOT THE SAME THING FOR A MINISPLIT?  
DO IT THE EASY WAY AND INSTALL A ROUGHINBOX**



During construction, the lineset and cable are fully protected while the drain inlet is shielded from dust and debris & stays clean to eliminate clogs.

When you return  
to site for the final  
hookup you don't find  
a nightmare...



And it's easy  
to complete  
the install...



**IT'S A NO BRAINER!**

**RoughinBox™**  
by  **MARKETAIR**  
A WORLD OF INNOVATION