

## Single Sheet Filter BECO INTEGRA® SOLO 300 – 1200



### Universal Enclosed Depth Filtration System for a Diverse Range of Applications

The BECO INTEGRA SOLO single-sheet filter from Eaton's Begerow Product Line is ideal for difficult filtration tasks in the biotechnology, chemical, cosmetics, pharmaceutical, and food industries. The system separates and washes solids from suspensions after precipitation or crystallization processes, or for the processing of pre-coat residues.

The BECO INTEGRA SOLO mobile single-sheet filter system's filling space is designed as a pressure vessel with a level filter bottom that drops for cleaning, and a horizontal depth filter medium. The pressure vessel, with optional thermal/insulating jacket, closes with clamp screws and seals with an O-ring. BECO® depth filter sheet, filter cloth, or metal composite plate filtration is optional. For the manual discharge of the filter cake, the bottom part drops via a spindle or hydraulics.

#### Special Features

- **Multiple process steps** such as extraction, filtration, washing, dissolving, and discoloration in one device.
- **Simple** handling through ergonomic design. Easy replacement of the BECO depth filter sheet/filter cloth, **simple and thorough cleaning**
- **CIP** possible by using rotating spray nozzles that eliminate dirt residues in corners
- The design and construction of BECO INTEGRA SOLO single-sheet filter complies with the requirements of the **GMP guidelines** and the **FDA regulations**

**Customization** or additional components allow for system expansion or complete systems according to customer specifications.



#### Technical Data

<b>Operating pressure:</b>	-14.5/+87 psi (-100/+600 kPa, -1/+6 bar)
<b>Operating temperature:</b>	14 – 320 °F (-10/+160 °C)
<b>Calculated temperature:</b>	392 °F (200 °C)

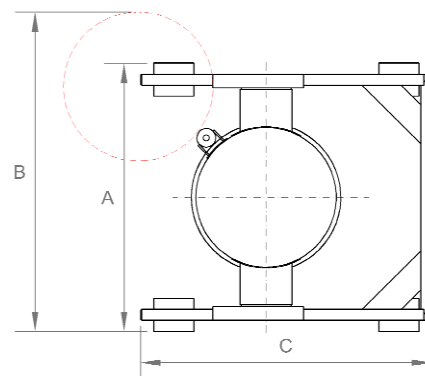
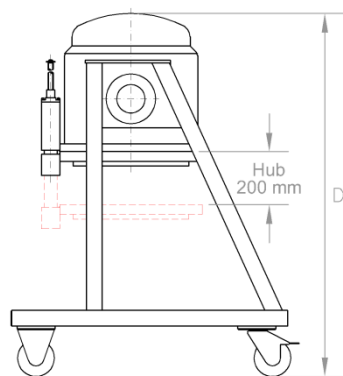
#### Materials

<b>Product contacting parts:</b>	Stainless steel AISI 316L / AISI 316Ti Hastelloy, Enamel, fluor-polymeric coatings
<b>Others:</b>	Stainless steel AISI 304
<b>Gaskets, O-rings:</b>	EPDM, Silicone, Viton, FEP coated (FDA listed)
<b>Filter material:</b>	BECO depth filter sheet, filter cloth and/or metal compound plate
<b>Connections:</b>	Flange according to EN 1092-1 or tri-clamp, sterile flange, round thread etc.
<b>Chassis:</b>	Stainless steel AISI 304

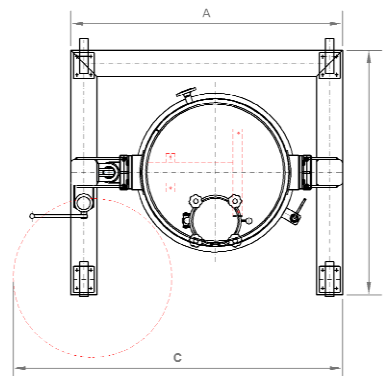
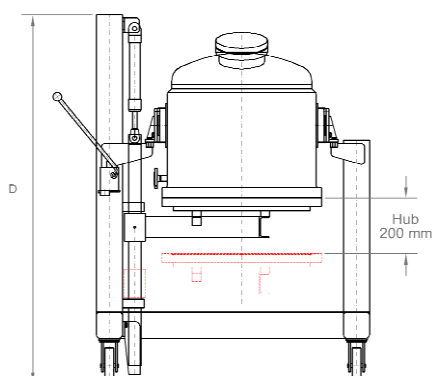
Other possible features: agitator, quick closing device, tilting device, special designs possible

Type	Depth filter sheets/depth filter media Ø	Filter area	Filling volume	Solids capacity at a cake volume of 7.87 in (200 mm)	Weight of filter	Measurements			
	in (mm)	ft <sup>2</sup> (m <sup>2</sup> )	gal (l)	gal (l)	lb (kg)	A	B	C	D
<b>300</b>	11.81 (300)	0.65 (0.06)	7.93 (30)	3.17 (12)	353 (160)	32.48 (825)	41.34 (1,050)	41.34 (1,050)	63.00 (1,600)
<b>450</b>	17.72 (450)	1.72 (0.16)	17.17 (65)	8.45 (32)	551 (250)	38.39 (975)	41.34 (1,050)	47.24 (1,200)	55.12 (1,400)
<b>600</b>	23.62 (600)	2.80 (0.26)	33.02 (125)	13.74 (52)	992 (450)	44.88 (1,140)	59.10 (1,500)	56.70 (1,440)	59.10 (1,500)
<b>800</b>	31.50 (800)	5.17 (0.48)	84.54 (320)	23.36 (96)	2.425 (1,100)	54.33 (1,380)	53.15 (1,350)	70.08 (1,780)	78.74 (2,000)
<b>1000</b>	39.37 (1,000)	8.18 (0.76)	166.43 (630)	40.15 (152)	3.748 (1,700)	63.78 (1,620)	66.93 (1,700)	82.68 (2,100)	80.71 (2,050)
<b>1200</b>	47.24 (1,200)	11.73 (1.09)	290.59 (1100)	57.59 (218)	5.512 (2,500)	73.23 (1,860)	72.83 (1,850)	92.52 (2,350)	83.46 (2,120)

Socket list	300 – 600	800	1000 – 1200	According to
Feed	DN 25	DN 40	DN 40	EN 1092-1
Filtrate	DN 25	DN 40	DN 40	EN 1092-1
Aeration/De-aeration	--	--	DN 25	EN 1092-1
Safety valve	--	--	DN 40	EN 1092-1
Safety fitting	DN 25	DN 25	--	EN 1092-1
Pressure gauge	--	--	DN 25	EN 1092-1
Stand by	DN 65	DN 65	DN 65	EN 1092-1



**Single-sheet filter BECO INTEGRA SOLO 300 – 600**



**Single-sheet filter BECO INTEGRA SOLO 800 – 1200**



**North America - HQ**

44 Apple Street,  
Tinton Falls, NJ 07724  
Toll Free: 800 656-3344  
(North America Only)  
Voice: +1 732 212-4700

**Europe/Africa/Middle East**

Auf der Heide 2  
53947 Nettersheim, Germany  
Voice: +49 2486 809-0

**Internormen Product Line**

Friedensstraße 41  
68804 Altlussheim, Germany  
Voice: +49 6205 2094-0

**Begerow Product Line**

An den Nahewiesen 24  
55450 Langenlonsheim, Germany  
Voice: +49 6704 204-0

**Brazil**

Av. Julia Gaioli, 474 - Bonsucesso  
07251-500 - Guarulhos  
Brazil  
Voice: +55 11 2465 8822

**China**

No. 7 Lane 280 Linhong Road,  
Changning District,  
Shanghai 200335, China  
Voice: +86 21 5200 0422

**Singapore**

4 Loyang Lane #04-01/02  
Singapore 508914  
Voice: +65 6825 1668

For more information, please e-mail us at [filtration@eaton.com](mailto:filtration@eaton.com) or visit us online at [eaton.com/filtration](http://eaton.com/filtration) for a complete list of Eaton's filtration products.

Not all products in Eaton's Begerow Product Line are available in all regions. Please contact your local Eaton office to determine availability.

© 2012 Eaton Corporation. All Rights Reserved. All trademarks and registered trademarks are the property of their respective owners.

All information and recommendations appearing in this brochure concerning the use of products described herein are based on tests believed to be reliable. However, it is the user's responsibility to determine the suitability for his own use of such products. Since the actual use by others is beyond our control, no guarantee, expressed or implied, is made by Eaton as to the effects of such use or the results to be obtained. Eaton assumes no liability arising out of the use by others of such products. Nor is the information herein to be construed as absolutely complete, since additional information may be necessary or desirable when particular or exceptional conditions or circumstances exist or because of applicable laws or government regulations.