



**VIVAX**  
**METROTECH**

# vCam Inspection Products



**Inspect and Locate with speed, accuracy and confidence  
with vCam Inspection Products**

[www.vxmt.com](http://www.vxmt.com) | [www.vivax-metrotech.com](http://www.vivax-metrotech.com)



# vCam-6 HD Inspection Camera System

Increase productivity and profitability with the feature-rich vCam-6 HD inspection camera system. Built tough and reliable for everyday use, the versatile vCam-6 is a good fit for plumbers, contractors, home inspectors, building maintenance supervisors, or anyone looking to inspect the interior of a pipe or duct.

Create crisp, detailed HD video inspections with audio comments, text descriptions, footage, date, and timestamps to submit to your customers without worry.

Designed for ease-of-use and engineered for dependability, the vCam-6 ensures trouble-free operation with little down time.



- 1080p HD resolution
- 9.7"/24cm LCD
- Touch-screen LCD
- 1 TB Hard drive
- AC/DC operation
- 3-frequency sonde
- Internal microphone
- Built-in wi-fi (free app)
- All stainless-steel



Putting in a full day's work is easy with the four-hour battery life and charging on-the-go with the provided AC and DC charging leads.




## TYPE-CP "STANDARD" REEL

- Wide enough profile to roll without rocking and tipping and slim enough to go through doorways and gateways.
- The all stainless-steel construction reel is available with 200'/60M, 300'/90M or 400'/120M of standard size pushrod. Three frequency sonde and traceable pushrod.



## TYPE-MX MINI REEL

- Small enough profile for use in confined areas or roof tops.
- Stainless steel and carbon fiber construction.
- Available in 100'/30M or 150'/45M of mini size pushrod.
- Three frequency sonde and traceable pushrod.

	Standard Type-CP Reel HD Cameras		Mini Type-MX Reel Cameras	
Camera Model:				
Model:	D34-HD	D46-HD	D18-MX	D26-MX
Dimensions:	1.3" / 34mm diameter	1.8" / 46mm diameter	0.70" / 18mm diameter	1" / 26mm diameter
Pipe Range:	2" / 50mm to 6" / 150mm	3" / 75mm to 8" / 200mm	2" / 50mm to 3" / 76mm	3" / 76mm to 6" / 152mm
Construction:	Stainless-steel housing with sapphire lens		Stainless-steel housing with sapphire lens	
Warranty:	1 year standard warranty Camera exchange program is available		1 year standard warranty Camera exchange program is available	



# vCamMX-2 Mini Camera System



The versatile **vCamMX-2 mini-camera system** is a compact all-in-one inspection camera at an affordable price. Available in 100'/30m and 150'/45m pushrod lengths and with two sizes of user changeable cameras, the system can inspect lines from 2"/50mm to 4"/100mm.

The vCamMX-2 mini-camera has all the features of the larger pushrod camera systems such as locatable sonde, traceable pushrod, distance counter, internal rechargeable batteries, on-screen text writer and built-in microphone for adding audio comments.

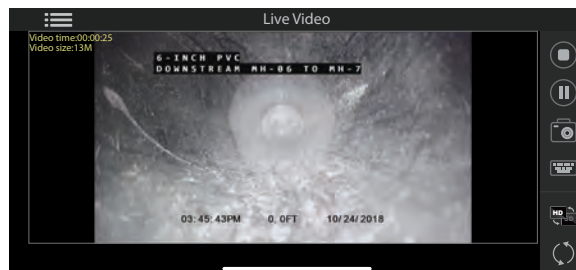
The vCamMX-2 can be purchased as a complete all-in-one unit with the control module mounted to the reel or purchase the reel separately to use with the vCam-6 control module.



**vCam Live View Mobile** is an app that connects a smartphone or tablet to the vCam-6 or vCamMX-2 control modules via Wi-Fi and streams live video into the app. With this video stream the user can record video and capture JPEG pictures into the smartphone or tablet. Now the user can share these files using the sharing features built into the phone/tablets operating system. Record video in HD quality on the smartphone or tablet.



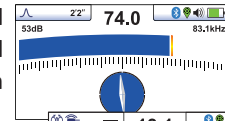
- Add text to the vCamMX-2 screen
- Add text to recording video or pictures
- Rename files
- Switch between HD and SD video stream
- Edit files in the phones/tablets operating system
- Share via iOS sharing features (email, text message, DropBox, OneDrive)



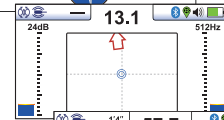
# vLoc3-Cam Sonde and Camera Locator

The **vLoc3-Cam** is the easiest to use sonde locator on the market today. The omni-directional antenna array allows for approaching the sonde from any position. The directional arrows will guide the user first to the front or rear locate point and then directly to the sondes's position and read out the depth of cover to the sonde.

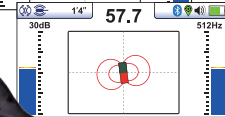
With multiple sonde frequencies it is compatible with the major push cameras and crawler cameras on the market. The Pushrod Trace mode shows a second display geared for tracing the path of the pushrod deployed in the pipe or tracing pipes with an optional portable transmitter.



Line Trace mode -  
Locate the pushrod  
or buried utilities



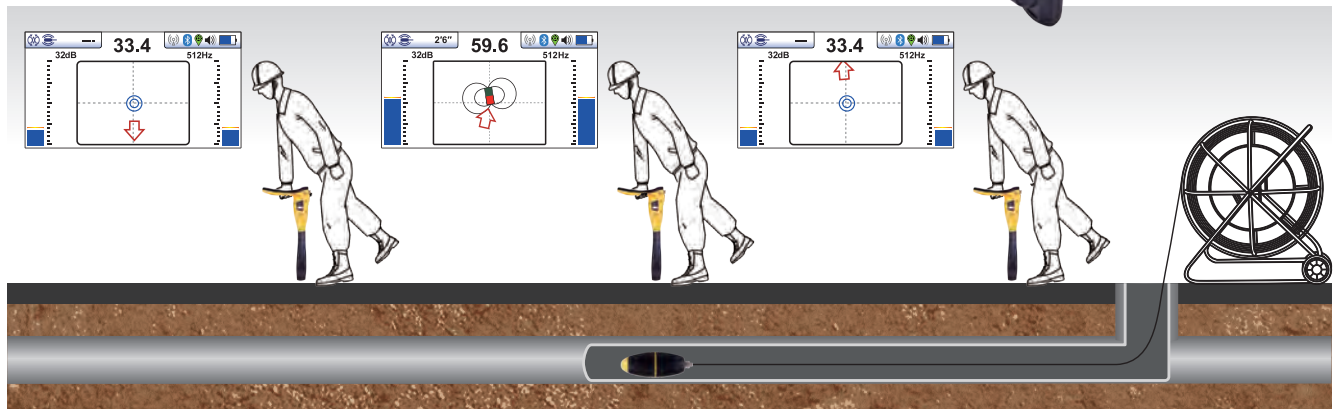
Directional arrows  
point to the sonde  
location



When directly  
over the sonde  
the arrow turns  
into a sonde icon



Optional 1-watt transmitter



## vCam Accessories



Rotate and Tilt Table

**The Rotate and Tilt Table (RATT)** - mounts between the Type-CP reel and the vCam-5 or vCam-6 HD control module. The RATT adds flexibility to position the control module to a comfortable viewing angle.

Available for: vCam-5 and vCam-6 to use on the Type-CP Reel








Drip Bags

**Reel Drip Bags** - use the durable, nylon material drip bags when entering a building, home or other clean areas. Use the drip bags to ensure that any moisture or debris will not fall from the reels pushrod onto a clean surface.

Available for: Type-CP and Type-MX Reels



# Camera Skid Range

Model	D18-MX	D26-MX	D34 Series	D34-HD	D46 Series
<b>2.25"/57mm Guide Skid</b>					
Pipe Range: 4" (100mm) 	●	●	●	●	—
<b>3"/75mm Guide Skid</b>					
Pipe Range: 4" (100mm) 	—	●	●	●	—
<b>4"/100mm Guide Skid</b>					
Pipe Range: 6" (150mm) 	—	—	●	●	●
<b>D46-CP 5"/127mm Guide Skid</b>					
Pipe Range: 6" (150mm) 	—	—	—	—	●
<b>Type-B Adjustable Skid</b>					
Pipe Range: 10"/255mm to 16"/405mm  Optional Light Kit Skid minimum diameter: 8"/200mm Skid minimum length: 11"/270mm Skid maximum diameter: 12"/305mm Skid maximum length: 10"/255mm	—	—	●	●	●

\* "●" = compatible accessory

\* "—" = not compatible



## Vivax-Metrotech Ltd.

Unit 18-19, Woodside Road,  
South Marston Ind. Est., Swindon, SN3 4WA, UK  
Free Phone: 0800 0281811  
Tel: +44(0)1793 822679  
Email: salesUK@vxmt.com

## Vivax Canada Inc.

41 Courtland Ave Unit 6, Vaughan,  
ON L4K 3T3, Canada  
Tel: +1-289-846-3010  
Fax: +1-905-752-0214  
Email: CanadianSales@vxmt.com

## Metrotech Vertriebs GmbH

Am steinernen Kreuz 10a  
D-96110 Schesslitz  
Tel: +49 954 277 227 43  
Email: serviceGermany@vxmt.com

## Vivax-Metrotech Corp.

### (Headquarters)

3251 Olcott Street, Santa Clara, CA 95054, USA  
T/Free: 800-446-3392  
Phone: +1 (408) 734-1400  
Fax: +1-408-734-1415  
Email: sales@vxmt.com

## Vivax-Metrotech SAS

Technoparc - 1 allée du Moulin Berger,  
69130 Ecully, France  
Tel: +33 (0)472 53 03 03  
Fax: +33 (0)472 53 03 13  
Email: salesfrance@vxmt.com

## Ventas para América Latina

3251 Olcott Street, Santa Clara, CA 95054, USA  
T/Free: 800-624-6210  
Tel: +1-408-734-1400  
Fax: +1-408-743-5597  
Email: VentasparaAmericaLatina@vxmt.com

### Local Vivax-Metrotech Distributor:



Disclaimer: Product and accessory specifications and availability is subject to change without prior notice.

V1.0 (Feb 2019)