

## CG Alu-terrain ground mounting system

Optimal cost-performance ratio ground mount

- Highest pre-assembly supporting beam for easy and fast installation.
- Ground screws and concrete foundations optional.
- Flexibility with variable inclination and height.
- Ecological and low-maintenance for entire life span.



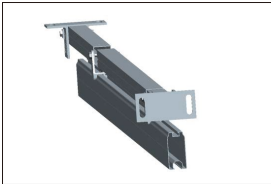
Capacity: 100kw  
Location: Japan



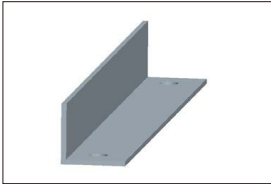
# Features

|                           |   |
|---------------------------|---|
| Install site              | Open terrain, landfill, and disposal  |
| Elevation angle           | Up to 60°   |
| Wind speed                | Up to 60m/s(216kmh/133mph)  |
| Snow load                 | Up to 50cm  |
| Standard                  | AS/NZ1170.2:2011, JIS C 8955:2011, other international standards                  |
| Distance between footings | Depending on load condition, refer to manual                                      |
| Clearance                 | Up to request   |
| PV module                 | Framed, unframed  |
| Module orientation        | Landscape, portrait   |
| Size of module array      | Any layout up to site condition   |
| Foundation                | Concrete base or ground screw   |
| Material                  | Anodized aluminum 6005 T6, stainless steel 304, hot-dipped galvanized steel Q253B |
| Color                     | Natural, powder coated  |
| Module widths             | Maximum 1.0m  |
| Module lengths            | Maximum 2.0m  |
| Warranty                  | 10 years limited warranty, refer to warranty doc                                  |

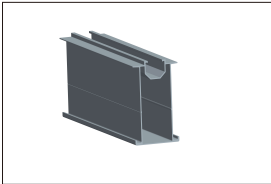
- All profiles are available in various lengths or can be cut to measure



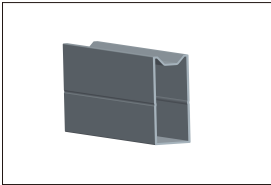
Pre-assembled beam



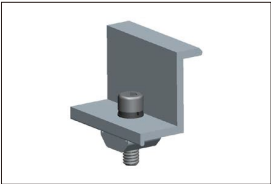
Reinforcement angle aluminum



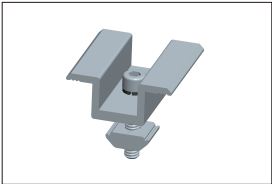
Rail



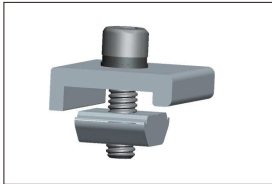
Rail connector



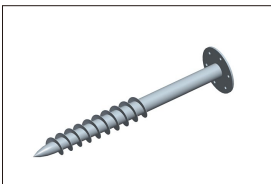
End clamp



Inter clamp



Rail clamp



Ground screw optional



Open terrain



10  
Years  
Warranty



Framed module



Unframed module



Orientation landscape



Orientation portrait

