

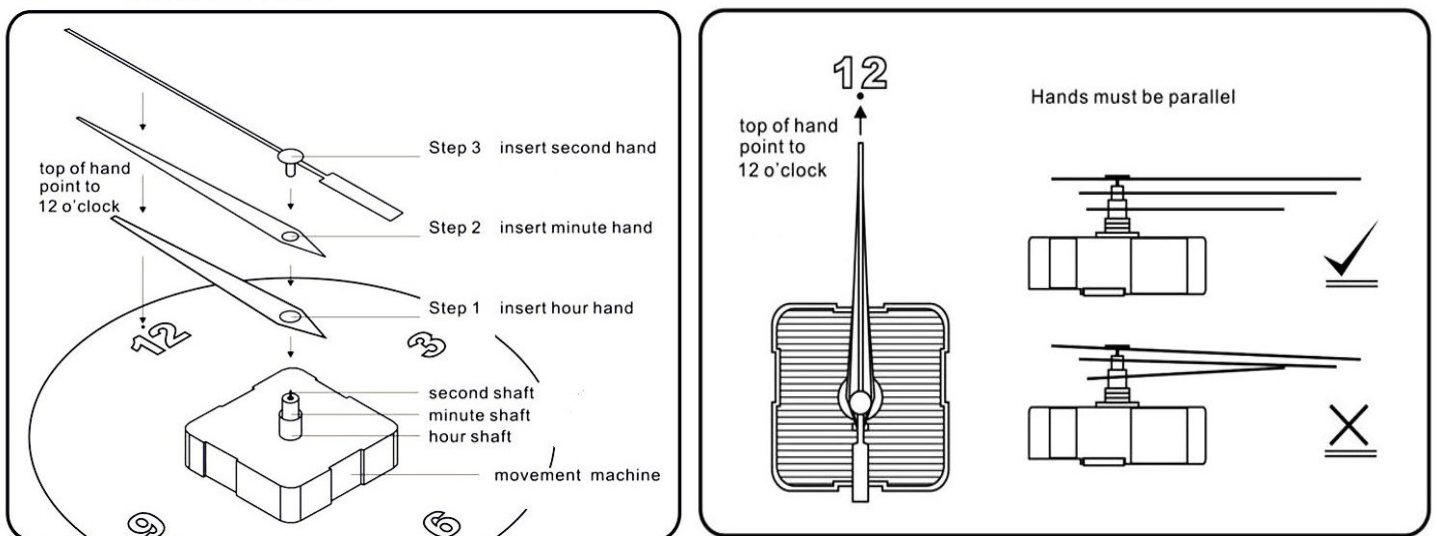


## **Setup instructions**

our clocks are shipped with the clock hands installed and aligned. All you have to do is to install the battery (AA type) and adjust the time using the adjusting wheel at the back of the clock mechanism.

If accidentally the clocks hands are out of alignment, please follow the instructions below in order to fit the hands again.

First, make sure that the battery is NOT installed, and then follow the steps:



When you have finished the alignment, Install\* the battery (AA type) and adjust the time using the adjusting wheel at the back of the clock mechanism.

## **Cleaning instructions:**

Wipe it using a wet cloth. In case of an oily residue, you can use pure alcohol.

\*Tip: insert first the positive (+) pole of the battery.