

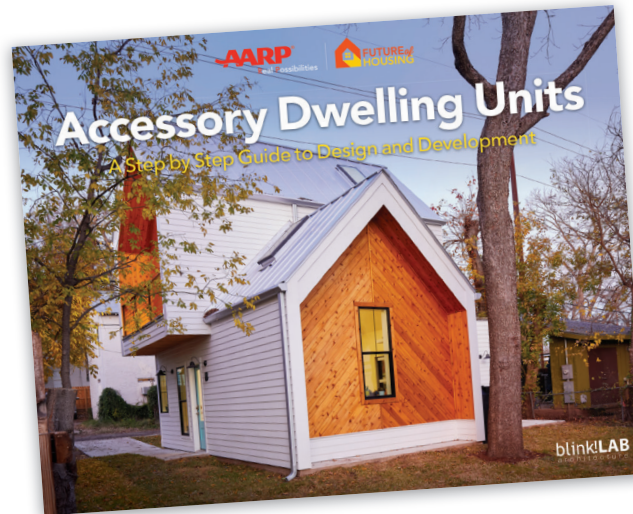
What's an ADU?

High housing costs are putting a financial strain on households in neighborhoods across the country. Families often spend a significant share their budgets on housing which impacts their ability to pay for other necessities. As housing costs rise in some areas in the US, people must make hard choices between competing priorities. For example, older adults living on fixed incomes may have to choose between spending on housing, groceries or critical medicine. However, issues of housing affordability and a lack of housing options can affect people regardless of age. People of all ages need innovative and effective approaches that create housing in their communities.

The **Accessory Dwelling Unit (ADU)** is an affordable choice that can expand housing options for people of all ages. The ADU is generally a small, self-contained unit which can be detached, as with a cottage in the backyard of a single family home, or attached—above a garage, in an attic or in a basement space of a home. As a small foot-print housing type, it is an efficient, creative, and cost-effective option in the affordable housing toolkit and can be used by jurisdictions to rapidly increase the housing supply. The benefits of ADUs vary, from creating housing for caregivers or adding a rental unit for income generation.

Find AARP's ADU Design Catalog Online

You can get your copy by going to www.aarp.org/futureofhousing



AARP's **Accessory Dwelling Units: A Step by Step Guide to Design and Development**, is an ADU Design Catalog for homeowners, builders and local stakeholders who are interested in learning more about ADUs and expanding housing options within the community. The catalog includes:

- A summary of ADU regulations for four cities: Austin, TX; Denver, Co; Oakland, CA; and the District of Columbia
- Useful tools and resources about financing and budgeting for an ADU project
- Visuals that highlight potential features and components for inclusion in the design and build of an ADU
- Drawings that include design elements that can make an ADU more accessible for someone who wants to age in their home or a person with limited mobility

The catalog was designed and prepared by Blink!Lab Architecture in partnership with AARP. Photo: Leonid Furmansky

AARP
Real Possibilities

FUTURE of HOUSING

Accessory Dwelling Units

A Step by Step Guide to Design and Development



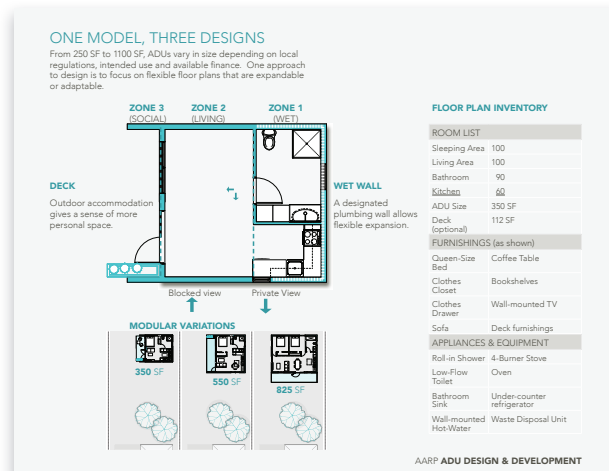
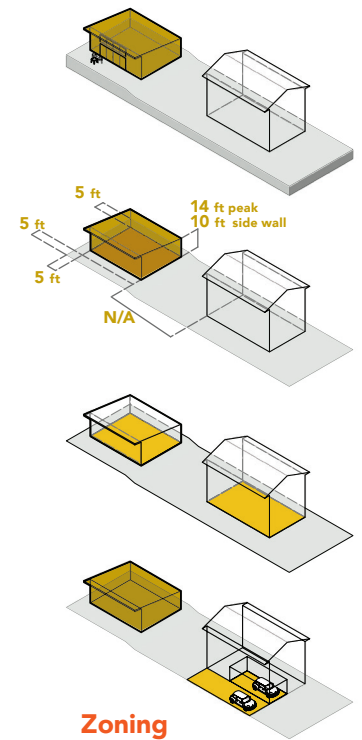
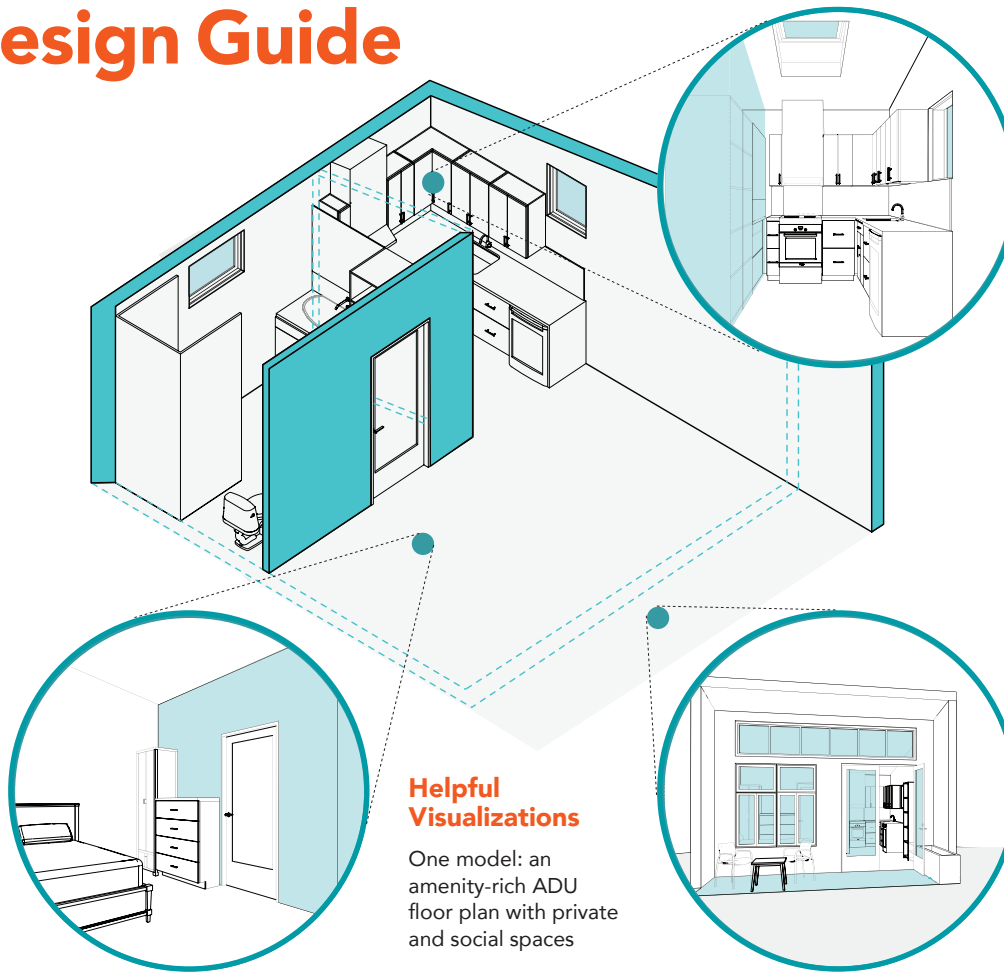
www.aarp.org/futureofhousing

blink!LAB
architecture

Inside the ADU Design Guide

The ADU Design Catalog takes the reader through the journey of key steps that must be considered for ADU development:

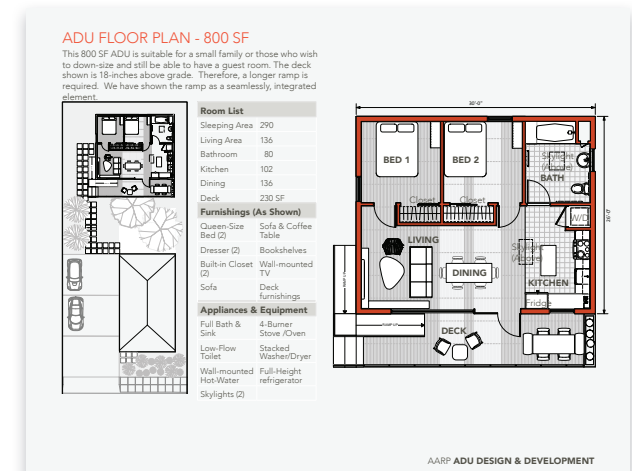
- 1. ADU Regulations:** an overview and analysis of ADU regulations in several cities to spotlight the unique needs of each place.
- 2. Finance Options:** available financing mechanisms for people considering ADU construction.
- 3. ADU Space Planning:** key elements, such as local regulations, intended use and project budget that should be considered in the design and construction of an ADU.
- 4. Three ADU Designs:** sample ADU designs that can adapt to changing needs, ranging from 250 SF and 1100 SF to fit different families and local regulatory environments.



One model, three designs: creating space that meets a variety of needs



A 3D rendering of the 800 SF ADU model



A sample floor plan for the 800 SF ADU model