



Tenmile Creek Restoration 8/16/19

By:
John 'Ringo' Reiss
Ringo's Lakeside Marina
531-759-3312

Objectives For Today



Disclaimers
&
Assumptions



Known
contributing
factors



What we are
trying to achieve



The conceptual
design



Challenges / help
needed

Disclaimers & Assumptions

- Please hold questions/comments to the end
- All opinions/information is by the presenter. I am not speaking for any organization
- In the interest of time
 - No Background info
 - No History details of the problems, other efforts/attempts to solve.
 - We will only discuss THIS SPECIFIC EFFORT/SOLUTION.

The assumption is you are familiar with my background, the lakes historical problems, and the local organizations. This project is being run by the best, most capable, most experienced VOLUNTEERS in the community. We are working with the right people in the Local, state, and federal agencies.



Known Contributing Factors to Lake Level



Sunken Logs
Removed
for Profit
(~2015)



Dune Grass
encroachment
(1950's)



Natural Scouring



Climate Change

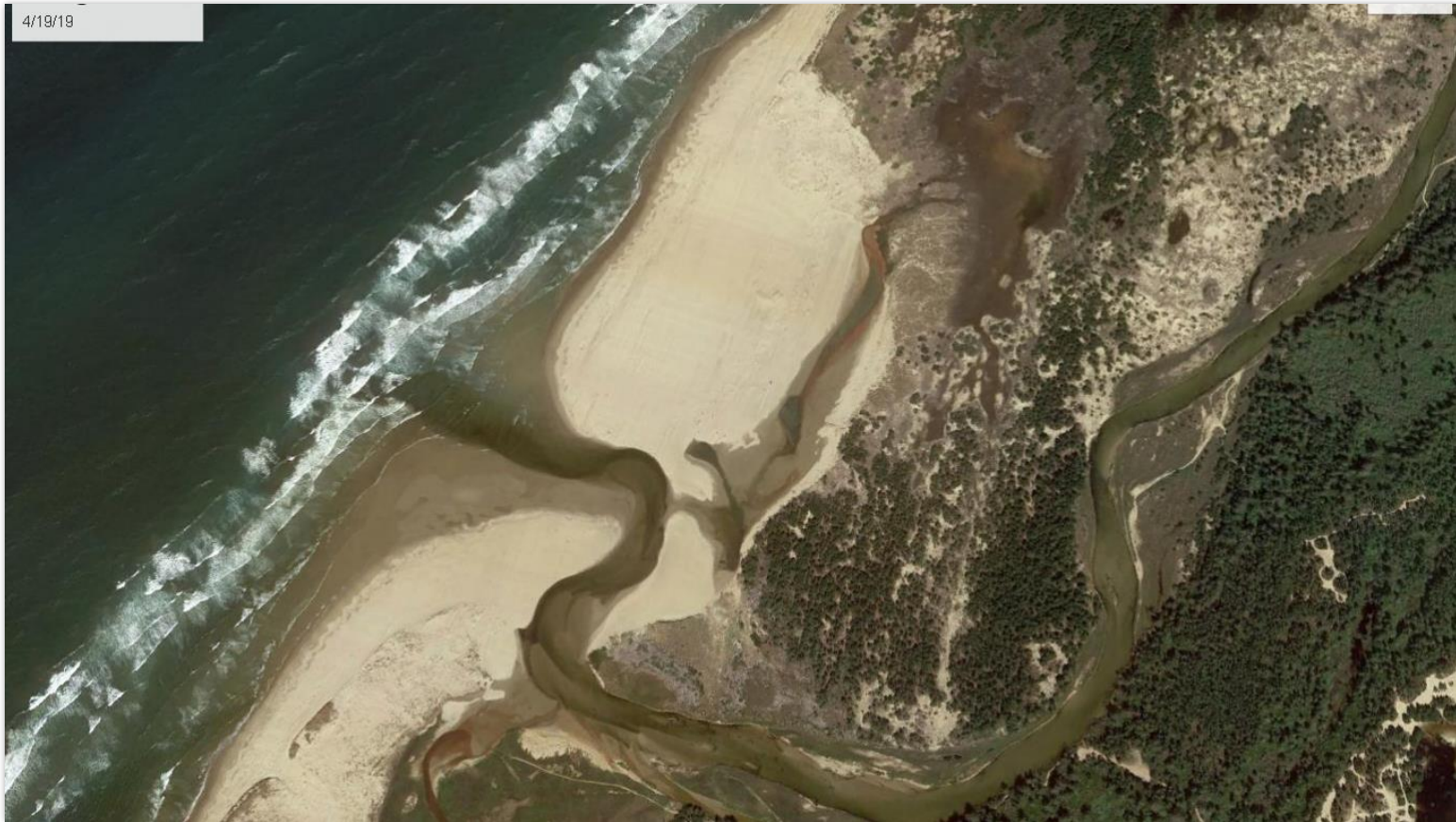


Sea Wall Removal
by Dept of
Forestry
(~2015-2016)

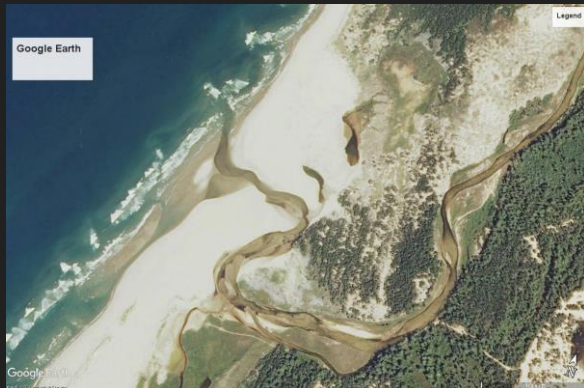
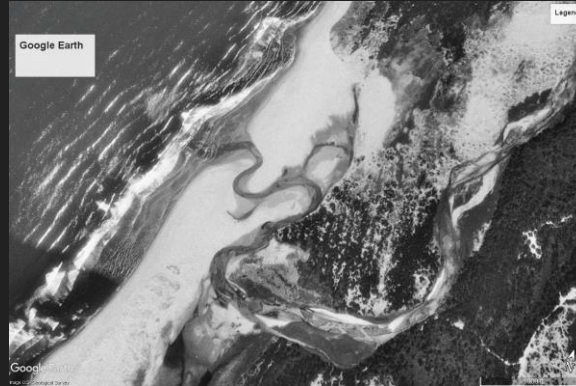


Site Tour of the Mouth of Tenmile Creek

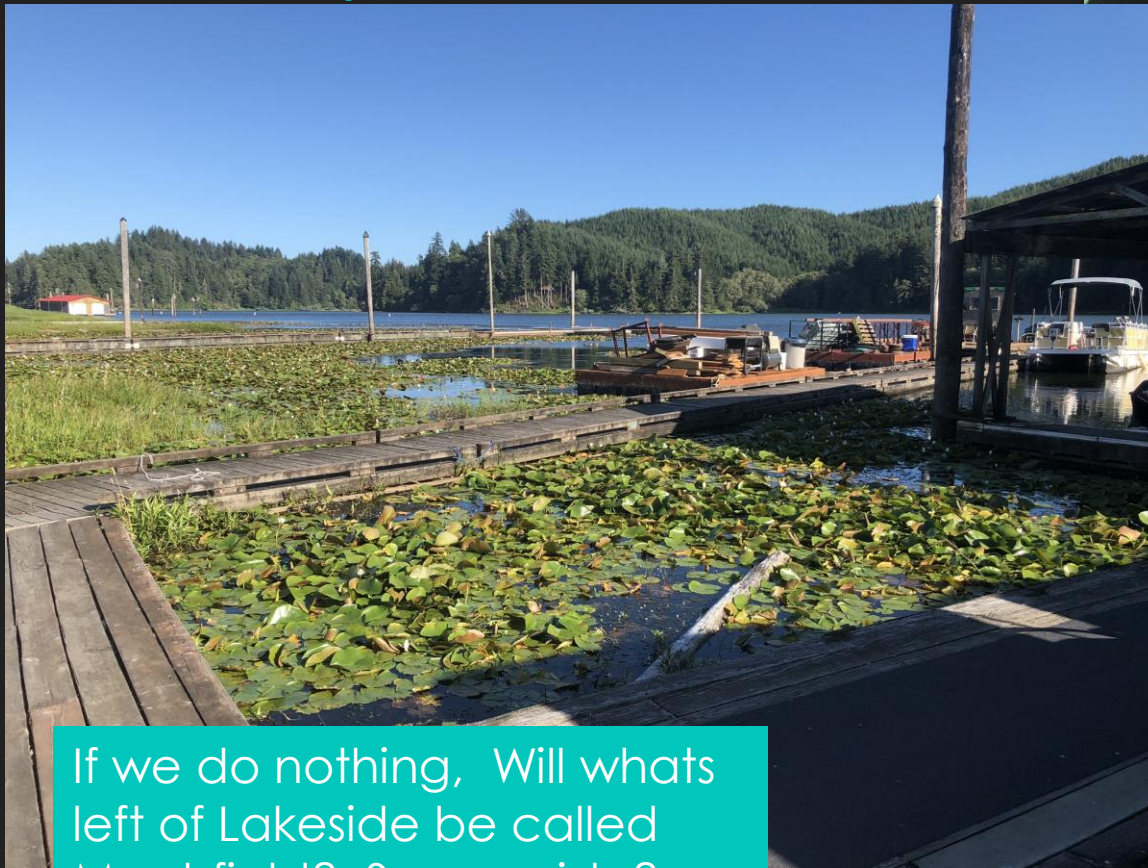
4/19/19



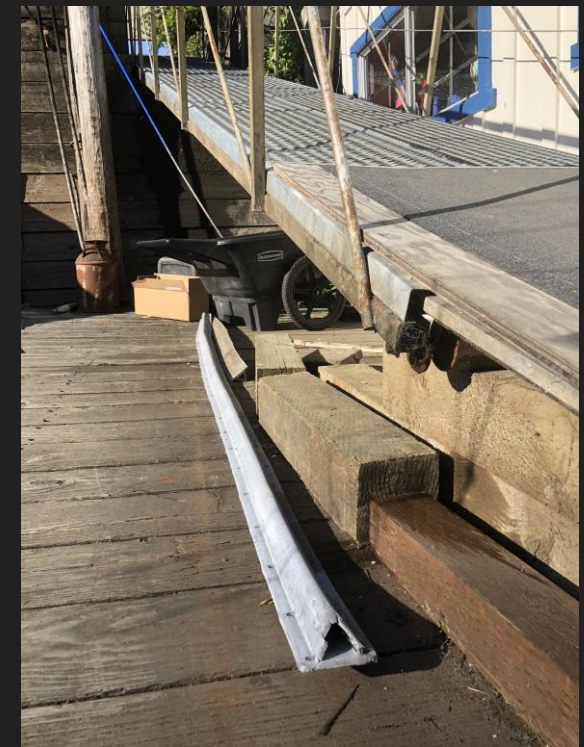
Tenmile Mouth - Everchanging



8/15 Lake Level

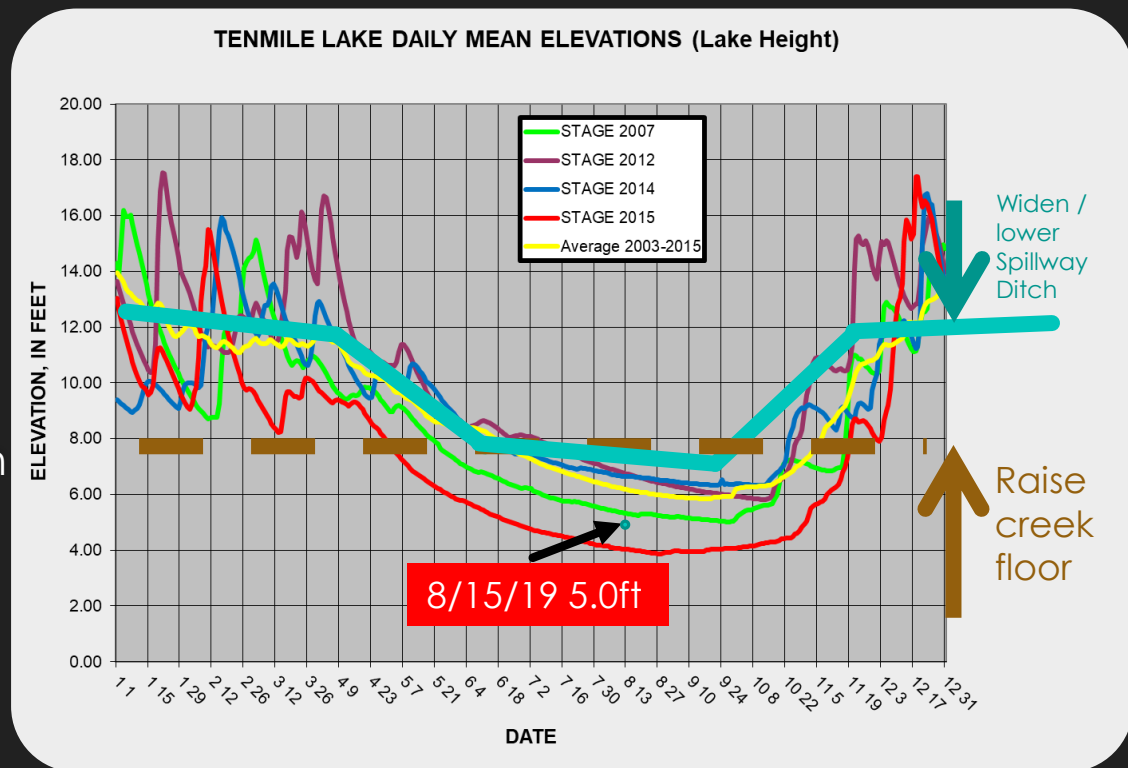


If we do nothing, Will whats left of Lakeside be called Marshfield? Swampside?



What We Are Trying To Achieve

- Normalize the creek flows
- Engineer a creek restoration to “Slow the Flow”
 - Raise the creek floor to a height that will restrict outflow at a predetermined elevation
 - Account for the restrictions in summer, by increasing outflow at a predetermined elevation.
- Improve fish passage, spawning grounds, predator cover
- We could even **DECREASE** the risk of city flooding by making the ditch bigger than needed





Proposed Site of Restoration

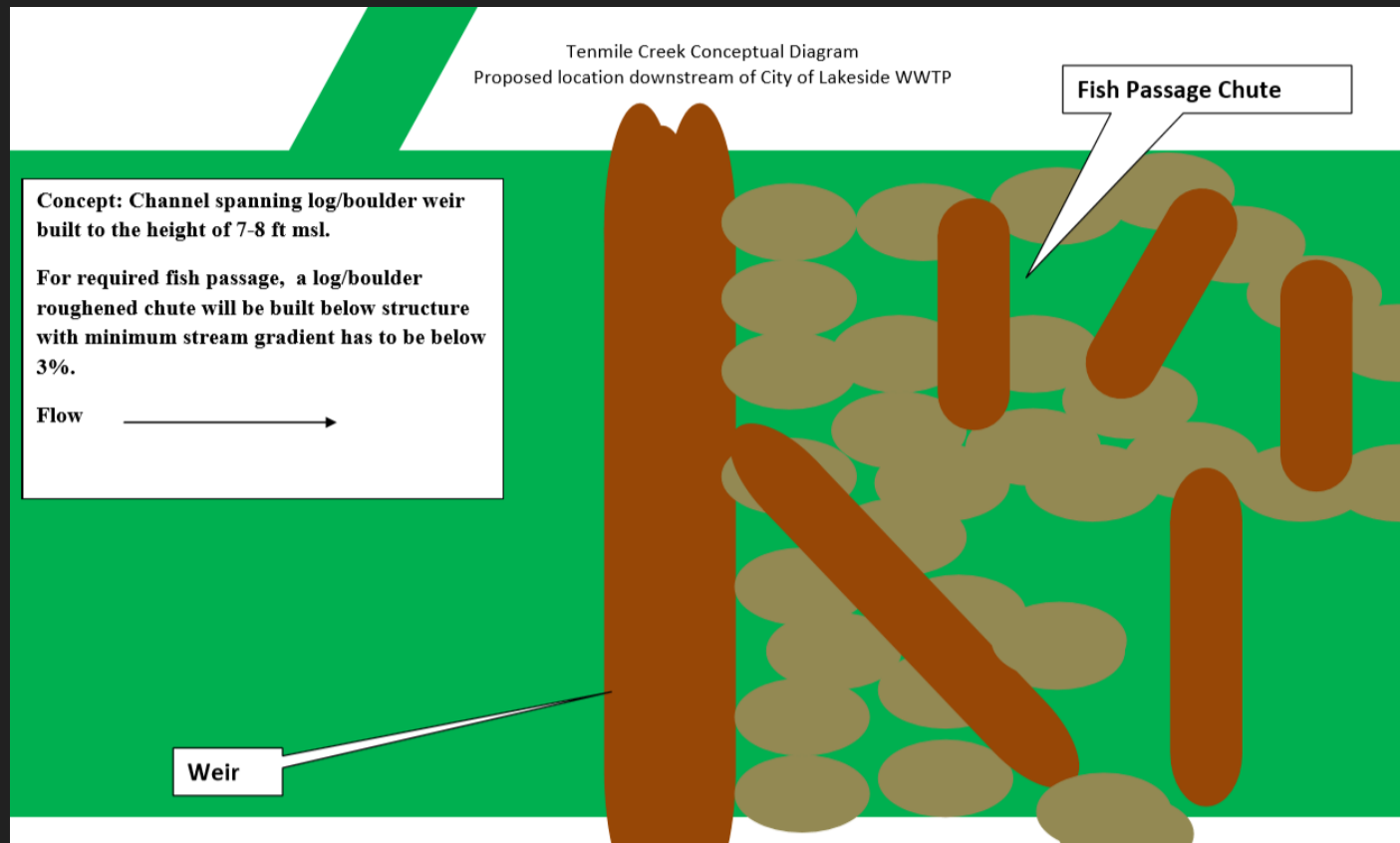




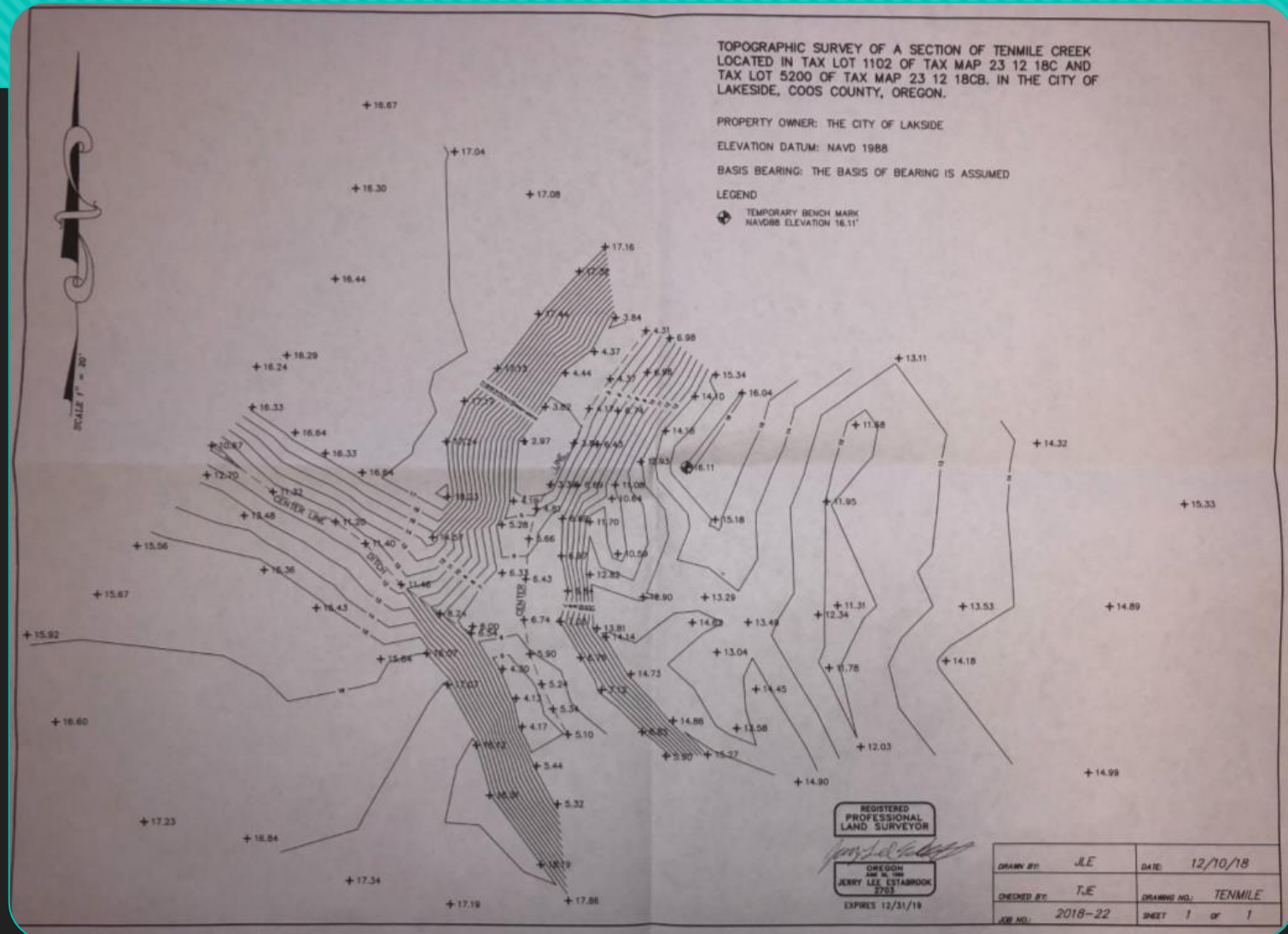
Flood Spillway Ditch

- Yes, This is what keep Lakeside from Flooding

Conceptual Design (by a non-engineer)



Conceptual Design (Real Survey Data)



THANK YOU! Donations Thus Far

- LS \$10,000
- DD \$5,000
- JT \$1,000
- DB \$1,000
- JR \$1,000
- MB \$1,000
- AR \$1,000
- LR \$750
- TLA Wine and Cheese Tour \$715.31
- KD \$500
- SR \$500

- MC \$400
- JG \$250
- SN \$250
- DF \$200
- LH \$200
- BP \$100
- JB \$100
- JH \$100
- JP \$100
- HT \$100
- SC \$100
- AC \$50
- SB \$20
- Cash Donations @ Ringo's \$72.21




\$24457.52

Challenges / Help Needed

- We need your Financial Support
 - Monetary support = Community Support
 - Our \$60,000 goal will go to the engineering firm who will analyze, design the solution to meet goals, and fulfill City of Lakeside requirements.
 - No Rise Study
 - Mixing Study
- Grants should provide bulk of funding. Grants need to show community support
- Is a few hundred dollars not worth it? Lake owners? Lakefront and Lakeside home values? The areas economy?
 - A piling costs ~\$600 to move/install. Dock repairs due to low water? Water quality?
 - All along the Oregon Coast, small communities are thriving. Why not us?
 - Event Coos Bay is being evaluated for restoration

Ringo's Vision – 3 Steps

- 
1. Immediate focus on creek restoration. Community, economy, is tied to the lake level. Nothing else is a higher priority. Then...
 2. Wetland restoration. The only true solution to the scientists agree can halt and restore the Lakes water quality and stop the silting in of the lake. Only once this is done (and it won't be cheap) can we focus on...
 3. Lake restoration. Weed removal, fish habitats, dredging options. Many solutions can be solved with community involvement and grants.

We as a community CAN make this happen! We can make things better. How much better?