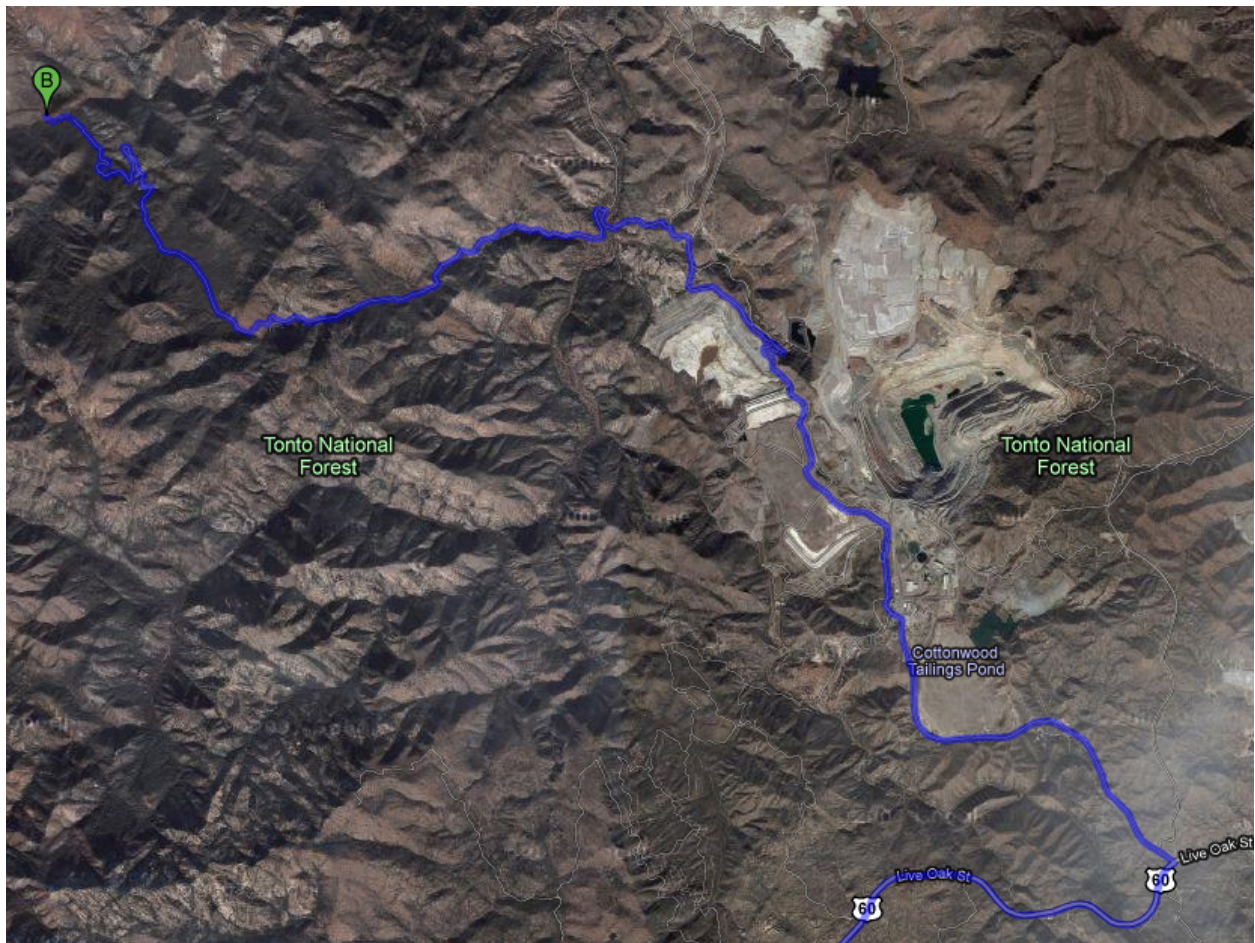
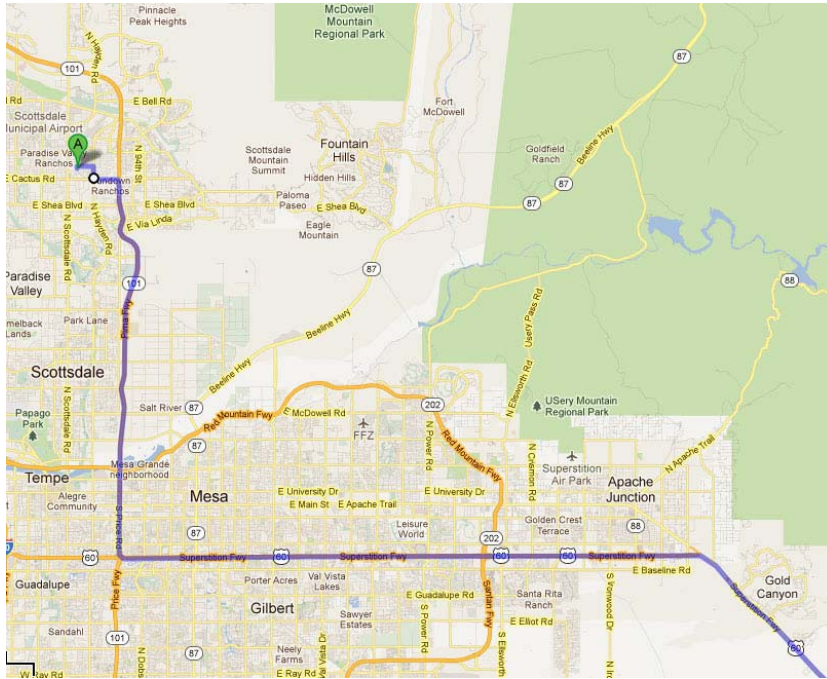


Kennedy Ranch Driving Directions

Google Map: <http://g.co/maps/uczwx>





Via N Hayden Rd

Sonoran Sky Elementary School, North 75th Street, Scottsdale, AZ

1. Head north on N 75th St toward E Sweetwater Ave

- 5. **5. Take the ramp onto AZ-101 Loop South** 14.4 mi
- 6. **6. Take exit 55A to merge onto US-60 E toward Globe** 63.2 mi

Pass the bridge



Turn left at Pinto Valley Mine Rd (just past mile marker 239)



13.3 mi

We will pull over and wait here for all cars to arrive. Please do not delay or make any pit stops along the way.

IMPORTANT: The turnoff from US 60 (the road to Globe) is just past the large Pinto Creek highway bridge and just past mile post 239. If you see mile post 240 or Globe, you've gone too far!

The route is 13 miles from turnoff of US 60. Most of it is dirt road (easily handled by cars and minivans). The first half of the route takes you a mining district. There are a maze of roads in there, but stay on the "PUBLIC ACCESS" road. The way is well marked with these signs:



Stay on 287 and head towards Haunted Canyon. There are many side roads, but they are marked as private. Stay on the main, public access road. About half way through the mining district, you will come to a sharp downward turn and see a vast empty black lined reservoir. If you drive past this, you are going the right way.



Cross over the bridge...you'll take **THE FIRST left turn up the hill** after the bridge.



DON'T MISS THIS TURN!

This is a key junction. Make sure you turn left on to 287A (Miles Ranch)
The road dead-ends at our campsite. We will be camping to the left or West side of the area.



Kennedy Ranch/Miles Trailhead