



bluematrix

BDM Transformations

Accelerate, simplify and consolidate the deployment process in minutes. Unlock the latent value from your big data environment

PRODUCT DESCRIPTION

The BDM Transformations module allows you unlock the value of your big data in a quick and efficient manner. It allows you leverage the full potential of your data for relevant, accurate and meaningful insights, reusing transformations across your enterprise.

It enables you combine the raw data from one or more sources into a cleansed, structured, enriched output that can be used for analysis – all without writing any code or SQL queries on the underlying data. It eliminates the development step, integration processes and bottlenecks with an easy-to-use interface and a library of 100+ transformations to suit your organization's needs.

BUSINESS CHALLENGE

The value of data increases within an organization as it is used by more people. This is because more value is derived from the underlying data. In order to achieve this increase in value, three key steps must be put in place:

1. The data must be made accessible to as wide an audience as possible within the organization
2. It must be made accessible in a structured and secure manner to allow the maximum mining of the data but at the same time prevent any contamination or damage to the underlying data
3. It must be integrated into production in a secure and efficient manner allowing user requests move quickly into production

The BDM Transformation module has a library of 100+ transformation functions available which enables any data user – from a marketing analyst to a data engineer create and deploy complex data pipelines in minutes. Using Control-M as an underlying scheduler, the pipelines fit seamlessly into your Dev Ops environment in a secure and controlled manner.

KEY FEATURES

- 100+ transformations available
- Library is extensible
- No code or SQL knowledge required
- Created pipelines can be scheduled for production
- All major ETL transformations available

KEY BENEFITS

- **Simple GUI**
Data Pipelines can be created using a simple interface. Any user can create pipelines to access the data
- **Reduce coding requirements**
Dramatic reduction in code & scripts developed and deployed
- **Remove Complexity of Data-Store Knowledge**
No requirement for SQL skills or code knowledge to transform the data
- **Remove the need for expertise**
No requirement for Spark expertise to create transformations



“Data preparation — the most time-consuming task in analytics and BI — is evolving from a self-service activity to an enterprise imperative.”

Gartner Guide for Data Preparation 2017

BDM SOLUTION

The BDM Transformation module solution contains a library with over 100+ transformation types available across the following technical areas:

- Aggregation
- Date/Time
- Mathematical
- String/Text
- Table Manipulation
- Windows

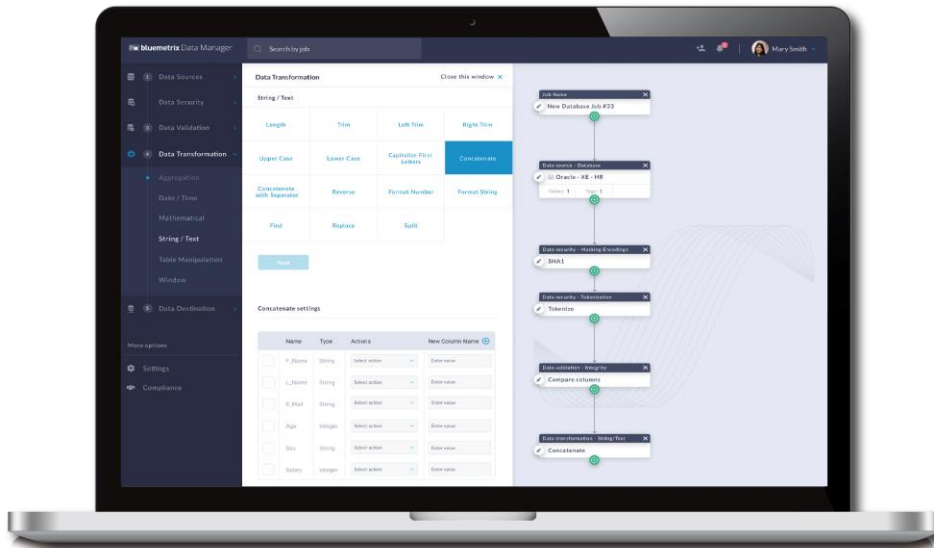
The library is fully extensible allowing more transformations to be created and simply added to the module for use across your company.

TECHNICAL REQUIREMENTS

Spark V 1.x or V 2.x
Atlas V 0.8 or above

APPOINTMENT

For more assistance, you can schedule a one-to-one appointment via Skype, Zoom, WebEx or phone.



FOR MORE INFORMATION

To learn more about BDM and Data Transformations module
Please visit www.bluematrix.com
| Europe +353 21 4212223 | info@bluematrix.com

