



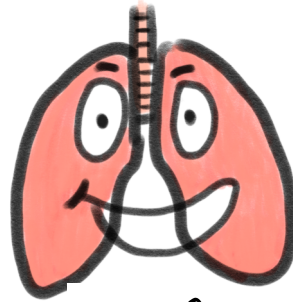
HEART

pumps blood throughout the body via the circulatory system, supplying oxygen and nutrients to the tissues.



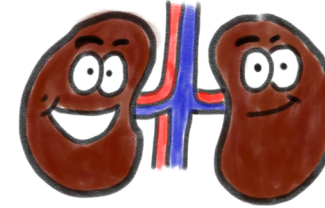
INTESTINE

part of the digestive system. Food from the stomach will be transferred to here and will get further digested and only important nutrients will be absorbed.



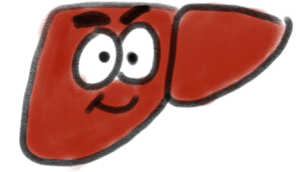
LUNG

oxygen that is breathed in enters the lung then will be supplied to blood, and carbon dioxide, a waste gas from the metabolism, leaves the blood.



KIDNEY

helps the body pass waste as urine. It also helps filter blood before sending it back to the heart.



LIVER

filter the blood coming from the digestive tract, before passing it to the rest of the body.



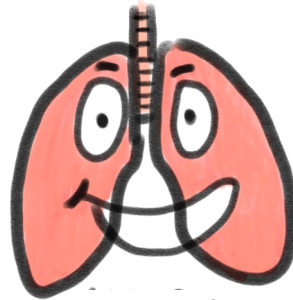
HEART

pumps blood throughout the body via the circulatory system, supplying oxygen and nutrients to the tissues.



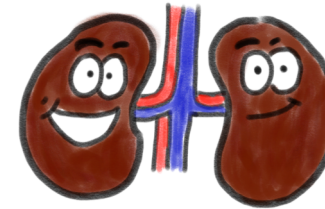
INTESTINE

part of the digestive system. Food from the stomach will be transferred to here and will get further digested and only important nutrients will be absorbed.



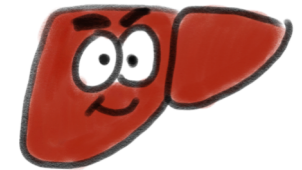
LUNG

oxygen that is breathed in enters the lung then will be supplied to blood, and carbon dioxide, a waste gas from the metabolism, leaves the blood.



KIDNEY

helps the body pass waste as urine. It also helps filter blood before sending it back to the heart.



LIVER

filter the blood coming from the digestive tract, before passing it to the rest of the body.



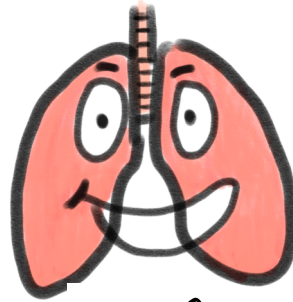
HEART

pumps blood throughout the body via the circulatory system, supplying oxygen and nutrients to the tissues.



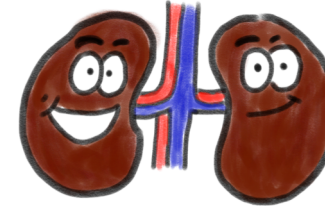
INTESTINE

part of the digestive system. Food from the stomach will be transferred to here and will get further digested and only important nutrients will be absorbed.



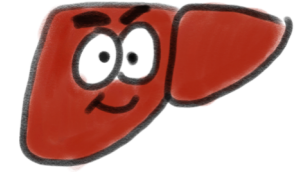
LUNG

oxygen that is breathed in enters the lung then will be supplied to blood, and carbon dioxide, a waste gas from the metabolism, leaves the blood.



KIDNEY

helps the body pass waste as urine. It also helps filter blood before sending it back to the heart.



LIVER

filter the blood coming from the digestive tract, before passing it to the rest of the body.



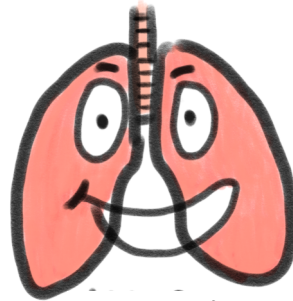
HEART

pumps blood throughout the body via the circulatory system, supplying oxygen and nutrients to the tissues.



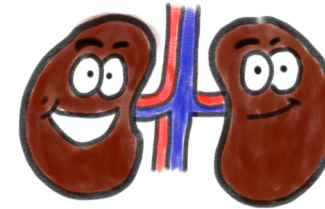
INTESTINE

part of the digestive system. Food from the stomach will be transferred to here and will get further digested and only important nutrients will be absorbed.



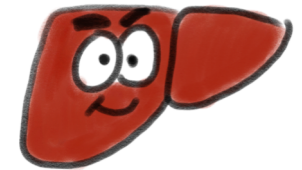
LUNG

oxygen that is breathed in enters the lung then will be supplied to blood, and carbon dioxide, a waste gas from the metabolism, leaves the blood.



KIDNEY

helps the body pass waste as urine. It also helps filter blood before sending it back to the heart.



LIVER

filter the blood coming from the digestive tract, before passing it to the rest of the body.



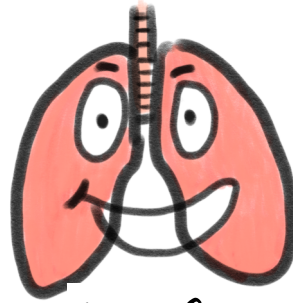
HEART

pumps blood throughout the body via the circulatory system, supplying oxygen and nutrients to the tissues.



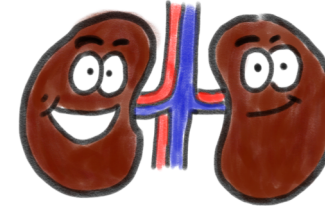
INTESTINE

part of the digestive system. Food from the stomach will be transferred to here and will get further digested and only important nutrients will be absorbed.



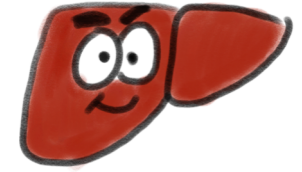
LUNG

oxygen that is breathed in enters the lung then will be supplied to blood, and carbon dioxide, a waste gas from the metabolism, leaves the blood.



KIDNEY

helps the body pass waste as urine. It also helps filter blood before sending it back to the heart.



LIVER

filter the blood coming from the digestive tract, before passing it to the rest of the body.



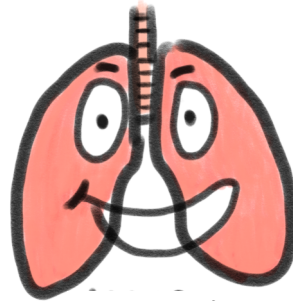
HEART

pumps blood throughout the body via the circulatory system, supplying oxygen and nutrients to the tissues.



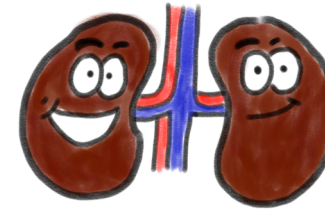
INTESTINE

part of the digestive system. Food from the stomach will be transferred to here and will get further digested and only important nutrients will be absorbed.



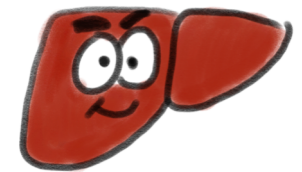
LUNG

oxygen that is breathed in enters the lung then will be supplied to blood, and carbon dioxide, a waste gas from the metabolism, leaves the blood.



KIDNEY

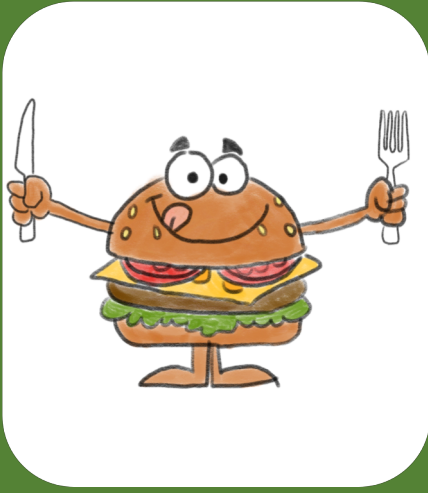
helps the body pass waste as urine. It also helps filter blood before sending it back to the heart.



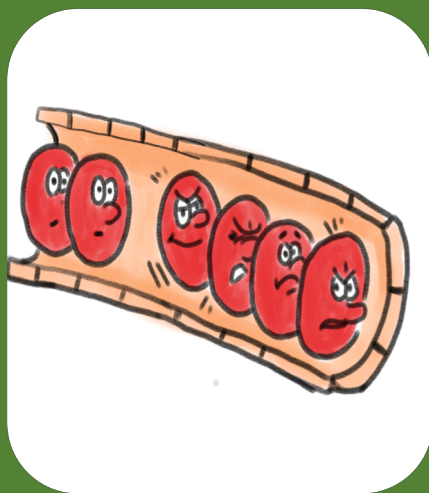
LIVER

filter the blood coming from the digestive tract, before passing it to the rest of the body.





HIGH  
CHOLESTEROL



HIGH  
BLOOD PRESSURE



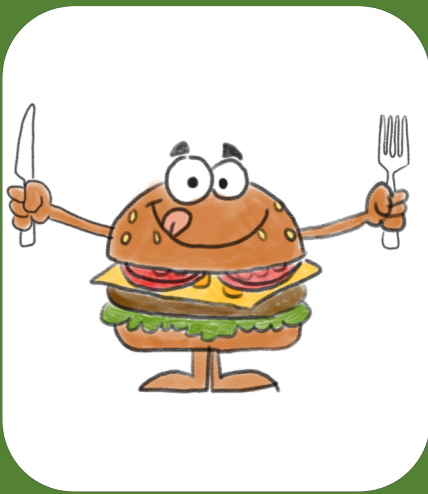
TOBACCO



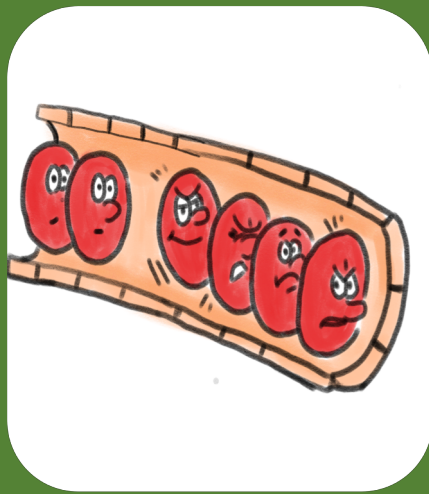
EXCESSIVE  
ALCOHOL



EXPOSURE TO  
POLLUTANTS



HIGH  
CHOLESTEROL



HIGH  
BLOOD PRESSURE



TOBACCO



EXCESSIVE  
ALCOHOL



EXPOSURE TO  
POLLUTANTS

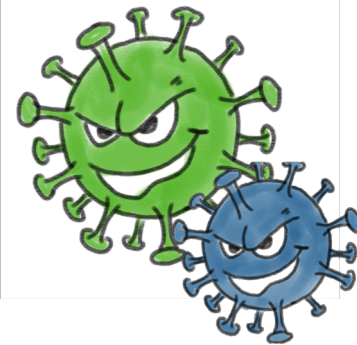




VIRAL  
INFECTION



TRANSPLANT



VIRAL  
INFECTION



TRANSPLANT