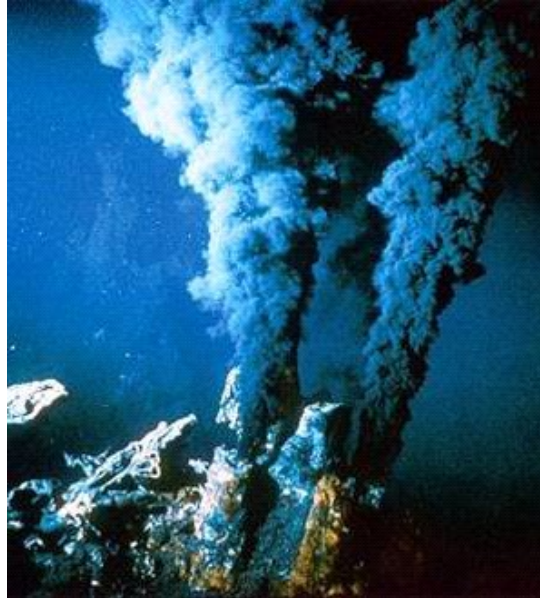


Deep-ocean Geothermal Vents



Deep-ocean geothermal vents occur in clusters along the mid-ocean ridges, supporting communities of deep-sea organisms which are found in no other environment. These jets, known as 'black smokers' have high concentrations of hydrogen sulfide which is usually poisonous to life, but these specialized communities could not live without it. The water temperatures fluctuates between 1°-350°C and these lifeforms reside within the comfort-zone somewhere between the two extremes.

Plans are now underway to mine them for their mineral wealth and if this were to occur the devastation would be horrendous. By mining these vents, they would not only directly destroy the habitat but would plunge anything living there into either extremes of hot or cold, both of which would be fatal.

David Cameron has pledged to put Britain at the forefront of a new international seabed mining industry, which he claimed could be worth £40bn to the UK. economy over the next 30 years. What a disgusting character he is.

Please write to:

investor@nautilusminerals.com; media@nautilusminerals.com; hr@nautilusminerals.com; environment@nautilusminerals.com; cv.3@lmco.com; info@sim-industries.com; webdev@whoi.edu; information@whoi.edu; kpatterson@whoi.edu; employment@whoi.edu; procurement@whoi.edu; ssenior@whoi.edu; fheide@whoi.edu; graphics@whoi.edu; media@whoi.edu; oceanuseditor@whoi.edu; security@whoi.edu; rreif@whoi.edu; development@whoi.edu; ebailey@whoi.edu; aoep-chair@whoi.edu; biology@whoi.edu; mcg@whoi.edu; po@whoi.edu; dstuermer@whoi.edu; marineops@whoi.edu; ebenway@whoi.edu; eobrien@whoi.edu; csds@whoi.edu; portoffice@whoi.edu; sssg@whoi.edu; education@whoi.edu; kmadin@whoi.edu; mit-who-www@mit.edu; postdoc@whoi.edu; housing@whoi.edu; media@nautilusminerals.com; hr@nautilusminerals.com; environment@nautilusminerals.com; oceanuseditor@whoi.edu; info@oceanicresources.com; infodxb@oceanicresources.com; infousa@oceanicresources.com; pressoffice@nerc.ac.uk; caex@nerc.ac.uk; mark@nerc.ac.uk; timlen@nerc.ac.uk; zk@nerc.ac.uk; ljha@nerc.ac.uk; roen@nerc.ac.uk; jandl@nerc.ac.uk; swindongdsadmin@nerc.ac.uk; soes@noc.soton.ac.uk; soso@noc.soton.ac.uk; tmin@soton.ac.uk; fjb3@soton.ac.uk; daht@soton.ac.uk; lcnm@soton.ac.uk; ec3@soton.ac.uk; jw3@soton.ac.uk; ugafnes@southampton.ac.uk; global@southampton.ac.uk; ugafee@noc.soton.ac.uk; ambassador@southampton.ac.uk; visit@southampton.ac.uk; retirement@whoi.edu; asweck@whoi.edu; gsnocs@southampton.ac.uk; gsnocs@soton.ac.uk; acng@soton.ac.uk; mscenq@southampton.ac.uk; alumni@noc.soton.ac.uk; callista@southampton.ac.uk; outreach@soton.ac.uk; askhr@noc.ac.uk; webmaster@noc.ac.uk; nol@noc.soton.ac.uk; mias@noc.soton.ac.uk; jalias@sympatico.ca; ugapply.fee@soton.ac.uk; coordinator@interridge.org; acm@nautilusminerals.com; ugafnes@soton.ac.uk;

This abuse will definitely happen if no-one opposes it, so do please make your opinions known by e-mailing those listed above. Let's do everything we can, write letters, pass this on to your friends, whatever it takes.

Thank you.