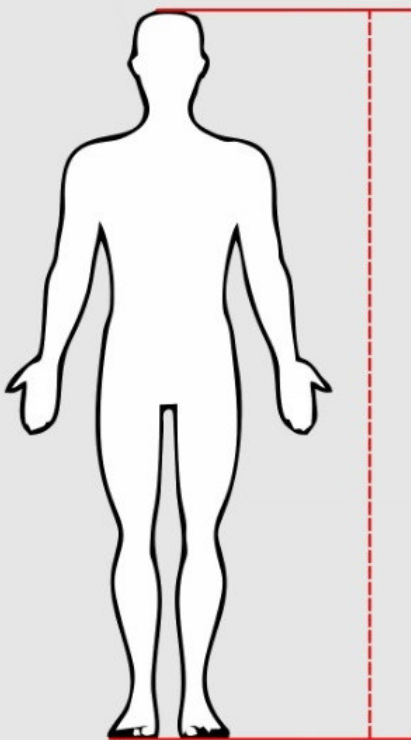


# MEASUREMENT GUIDE

## INSTRUCTIONS

1. For taking proper measurements, you must have a snug T-shirt and underwear on.
2. Take measurements in centimeters (highly recommended) or inches.
3. Always use any type of protector or guard while taking measurements if you plan to use it underneath your suit.
4. Kindly, see picture examples against each point carefully and take measurements accordingly.

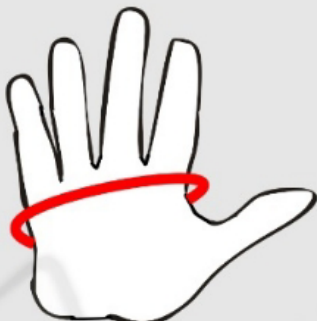
## HEIGHT



Measure your exact height standing straight without wearing any shoes (as shown in the picture).

Your Height: \_\_\_\_\_

## GLOVES



Measure circumference of your palm just under the knuckles (as shown in the picture).

Your Palm: \_\_\_\_\_

## ADDITIONAL INFO

Please check in or highlight the boxes to complete the following required information:

You are: ☐ Male ☐ Female ☐ Kid

Leather Type: ☐ Cowhide ☐ Kangaroo (**Extra charges**)

Perforations: ☐ Yes ☐ No

Speed Hump: ☐ Regular ☐ No ☐ Hydra pack compatible (**Extra charges**)

Elbow Sliders: ☐ Yes ☐ No

Lining: ☐ Removable ☐ Fixed

Additional Notes (If any):

If you still need help regarding measurements or any other information, feel free to contact us.

## A: NECK



Measure circumference of your neck using tape horizontally (as shown in the picture).

Your Measurement: \_\_\_\_\_

## B: CHEST



Measure circumference of widest part of your chest just under armpits. (as shown in the picture).

Your Measurement: \_\_\_\_\_

**In case you are a lady, also measure circumference of your breasts.**

\_\_\_\_\_

## C: BELLY



Measure circumference of your belly exactly located at navel using tape horizontally (as shown in the picture).

Your Measurement: \_\_\_\_\_

## D: WAIST



Measure circumference of your waist usually 6-7 cm below navel. (as shown in the adjacent pictures).

Your Measurement: \_\_\_\_\_



## E: SLEEVE LENGTH



Measure your sleeve length starting from shoulder joint and ending at wrist keeping arm straight (as shown in the picture).

Your Measurement: \_\_\_\_\_

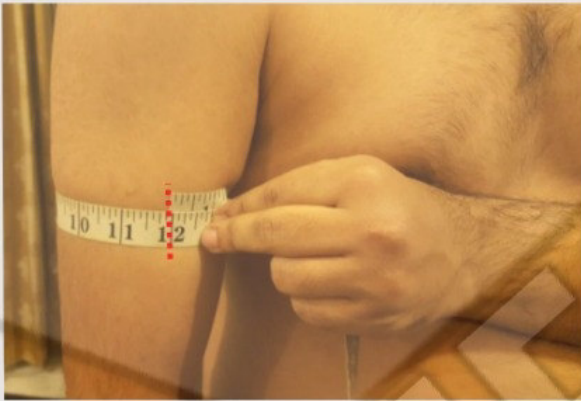
## F: SHOULDER TO ELBOW



Measure from shoulder joint to the elbow center (as shown in the picture).

Your Measurement: \_\_\_\_\_

## G: BICEPS



Measure circumference of widest part of your bicep (as shown in the picture).

Your Measurement: \_\_\_\_\_

## H: ELBOW



Measure circumference of your elbow center (as shown in the picture).

Your Measurement: \_\_\_\_\_

## I: FOREARM



Measure circumference of widest part of forearm under your elbow (as shown in the picture).

Your Measurement: \_\_\_\_\_

## J: WRIST



Measure circumference of your wrist bone (as shown in the picture).

Your Measurement: \_\_\_\_\_

## K: SHOULDER



Measure from one shoulder joint to the other shoulder joint (as shown in the picture).

Your Measurement: \_\_\_\_\_

## L: BACK LENGTH



Measure your back length starting from neck bone on the back and ending at waistline on the back (as shown in the picture).  
Waistline is located exactly at the place where you took your waist circumference.

Your Measurement: \_\_\_\_\_



## M: HIPS



Measure circumference of the widest part of your buttocks (as shown in the picture).

Your Measurement: \_\_\_\_\_

## N: THIGH



Measure circumference of the widest part of your thigh usually 7 cm below your crotch (as shown in the picture).

Your Measurement: \_\_\_\_\_

## O: KNEE



Measure circumference of your knee center (as shown in the picture).

Your Measurement: \_\_\_\_\_

## P: LOWER LEG



Measure circumference of the widest part of your calf muscle (as shown in the picture).

Your Measurement: \_\_\_\_\_

## Q: INSEAM



Measure from your crotch to little above ankle bone standing straight (as shown in the picture).

Your Measurement: \_\_\_\_\_

## R: OUTER LENGTH



Measure from your waistline to little above your ankle bone standing straight (as shown in the picture). Waistline is located exactly at the place where you took your waist circumference.

Your Measurement: \_\_\_\_\_

## S: KNEE TO ANKLE



Measure from your knee center to little above ankle bone (as shown in the picture).

Your Measurement: \_\_\_\_\_

## T: ANKLE



Measure circumference little above ankle bone (as shown in the picture).

Your Measurement: \_\_\_\_\_



**FRONT OF NECK THROUGH CROTCH TO BACK OF NECK**