

## PORTABLE & RUGGED

### SUBMERSIBLE ROBOTS

#### DT340 L



TATIC ZOOM CAMERA +  
LED LIGHTS +  
150M (500FT) TETHER & REEL +  
HANDHELD CONTROLLER +  
2 CARRYING CASES +

#### DT340 S



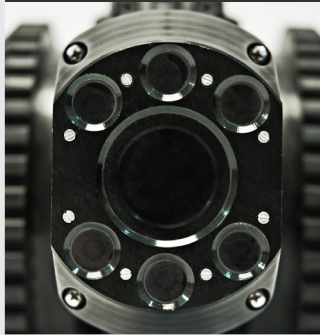
PTZ CAMERA +  
DISTANCE COUNTER +  
LED LIGHTS  
150M (500FT) TETHER & REEL  
HANDHELD CONTROLLER  
2 CARRYING CASES

#### DT340 X



DT340S PACKAGE +  
MODULAR ELEVATING ARM +  
12" WHEELS +  
400M (1300FT) TETHER & REEL +  
AUX LIGHTS +

#### DT340 // CAMERA SPECS



COLOR 1/4" CCD  
530 TVL, 1.0 LUX  
10X OPTICAL, 12X DIGITAL  
AUTO SHUTTER, AUTO/MANUAL FOCUS  
LIGHTS: DIMMABLE  
SHADOWLESS LED FLOOD  
PAN TILT ZOOM  
TILT 280°  
PAN INFINITE (CONTINUOUS)

#### DT340X // FULLY LOADED



DT340X PACKAGE +  
CRAWLER TRACKS  
8 & 10" CARBIDE WHEELS  
LIFTING KIT  
DVR  
SONDE

#### CUSTOM BUILD // DT340 ADD-ONS



VIDEO GLASSES



DIGITAL VIDEO  
RECORDER



LIFTING KIT



CRAWLER TRACKS



SONDE



RUBBER WHEELS  
10-12"



CARBIDE WHEELS  
8-10"



ELEVATING ARM



WinCan

WINCAN  
SOFTWARE

\* PRICE STARTING AT

DISTRIBUTE BY:

MARINE COMMERCE PTE LTD

EMAIL: [COMMERCIAL@MARINE-COMMERCE.COM](mailto:COMMERCIAL@MARINE-COMMERCE.COM)

WEBSITE: [WWW.MARINE-COMMERCE.SG](http://WWW.MARINE-COMMERCE.SG)

TEL: +65-6744 5040

## DT340 FEATURES

### KEY HIGHLIGHTS



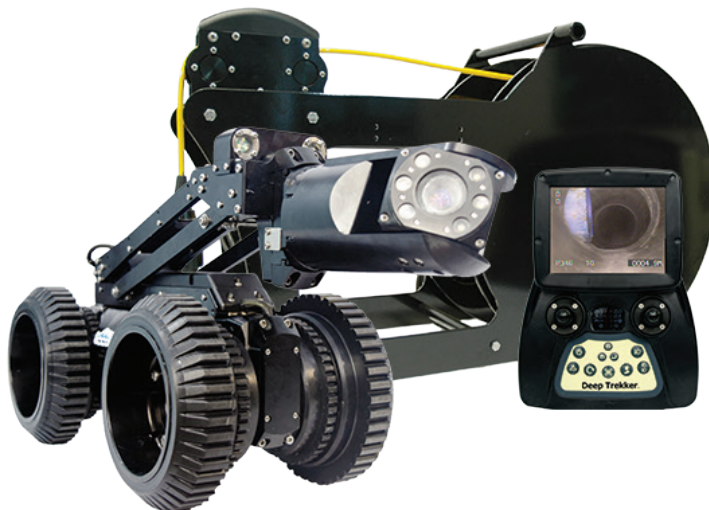
RANGE - 400M (1,312FT)



FULLY SUBMERSIBLE - 50M



UP TO 8 HOURS



LOW MAINTENANCE



TWO CARRYING CASES



STEERABLE



GIS SOFTWARE // PACP/NASSCO  
COMPLIANT REPORTING COMPATIBLE

### DT340 // SPECIFICATIONS

#### DT340 'S' CRAWLER GENERAL SPECIFICATIONS :

LENGTH:	710 MM (27.95")
WIDTH:	141 MM (5.55")
HEIGHT:	151 MM (5.96")
WEIGHT:	16.6 KG (36.59 LB)
MATERIALS:	STAINLESS STEEL ALUMINIUM HIGH STRENGTH ACRYLIC
DEPTH RATING:	50 M (164 FT)
VIEWING CAPABILITY:	PIPELINES 200MM (8") DIAMETER TO 900MM (36") CENTER
WHEELS:	4
TRACKS:	OPTIONAL
WHEEL SIZES:	145 MM DIAMETER (5.7") (STANDARD) 200 MM DIAMETER (7.9") (OPTIONAL) 300 MM DIAMETER (11.8") (OPTIONAL)
TURN RADIUS:	0 MM (0")
SPEED:	12 M / MIN
OPERATING TEMP:	-5C TO 40C (23F - 104F)
WARRANTY:	1 YEAR - PARTS AND LABOR

#### ELECTRICAL SYSTEM :

SYSTEM:	19.2 VDC (LITHIUM BATTERIES)
BATTERY RUN TIME:	4 - 8 HOURS
BATTERY RECHARGE:	1.5 HOURS
SENSORS:	INCLINE, ROLL, LEAK, CAMERA PAN/TILT

#### DRIVE SYSTEM :

POWER:	PLANETARY GEAR MOTOR (2 PIECES)
WHEEL CONTROL:	STEERABLE, CRUISE CONTROL, INFINITELY VARIABLE (FORWARD & REVERSE)
GEAR TRAIN:	HIGH STRENGTH OVERSIZED GEARS
FINAL DRIVES:	MAGNETICALLY COUPLED

#### TETHER :

TETHER DIAMETER:	6 MM (0.24")
TETHER LENGTH:	50 M - 400 M (164 FT - 1,312 FT)
TETHER CONSTRUCTION:	POLYURETHANE OUTER JACKET WITH EMBEDDED LIGHT WEIGHT SYNTHETIC FIBERS

MINIMUM BREAKING STRENGTH:	450 KG (1000 LB)
-------------------------------	------------------

#### TETHER REEL :

CONSTRUCTION:	INDUSTRIAL TOUGH; IP68
INTELLIGENCE:	STANDALONE HALL EFFECT TETHER LENGTH COUNTER (OPTIONAL)
CAPACITY:	400M (1,312 FT)
OPERATION:	MANUAL COIL FREE-WHEEL UNCOIL WITH GUIDE

DISTRIBUTE BY:

MARINE COMMERCE PTE LTD

EMAIL: [COMMERCIAL@MARINE-COMMERCE.COM](mailto:COMMERCIAL@MARINE-COMMERCE.COM)

WEBSITE: [WWW.MARINE-COMMERCE.SG](http://WWW.MARINE-COMMERCE.SG)

TEL: +65-6744 5040