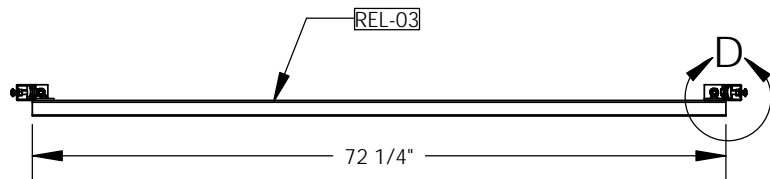
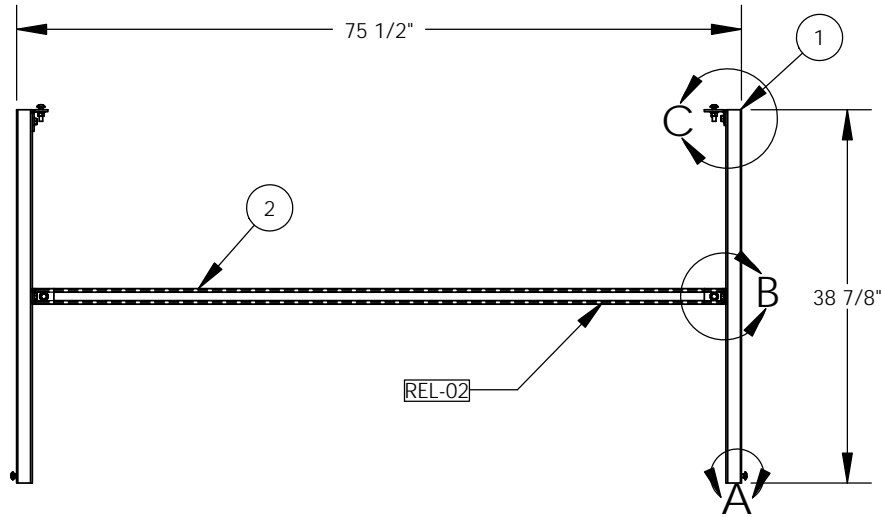
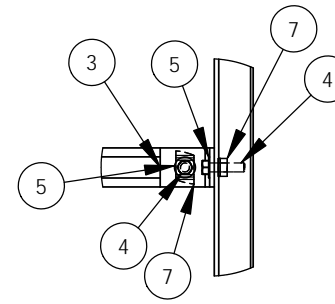
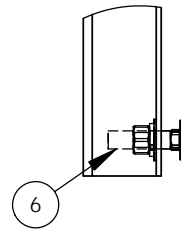


ITEM NO.	PART NUMBER	DESCRIPTION	QTY
1	SC-38	Strut, Solid Channel (38.875")	2
2	SC-72.25	Strut, Solid Channel (72.25")	1
3	HAMP0062	Bracket, Strut Angle	4
4	HABO0013	BOLT,HH,SS 3/8-16X1.5	6
5	HAWA0013	WASHER,FLAT,SS 3/8	6
6	00259.25	BK-24	4
7	HANU0031	Nut, Channel Lock, 3/8-16	6

REVISIONS			
REV.	DESCRIPTION	DATE	APPROVED
REL-02	Changed Center Unistrut Orientation to Face Up and Under Vertical Struts	12/9/2009	R.L.J.
REL-03	Shortened Unistrut From 75.5" to Allow Pivoting	1/5/2017	R.L.J.

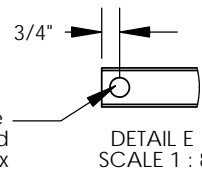
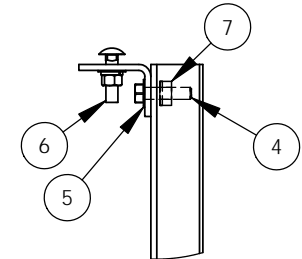


DETAIL A
SCALE 1 : 4



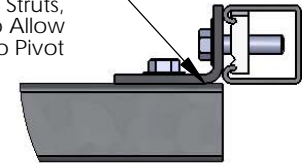
DETAIL B
SCALE 1 : 8

DETAIL C
SCALE 1 : 6



DETAIL E
SCALE 1 : 8

Horizontal Strut Placed Under Vertical Side Struts, Flush w/ Inside to Allow Center Unistrut to Pivot



DETAIL D
SCALE 1 : 4

Unistrut Dimensions Verified by Rod Jorgenson 01/05/17
Assembly is to be Installed 25.5" Up From Ground.

Nordic Fiberglass, Inc.

21415 US Hwy 75 NW, Warren, MN 56762
www.nordicfiberglass.com
218-745-5095 ph. --- 218-745-4990 fax

CSB-450 Cable Support Bracket Kit

PROPRIETARY AND CONFIDENTIAL
THE INFORMATION CONTAINED IN THIS DRAWING IS THE SOLE PROPERTY OF NORDIC FIBERGLASS, INC. ANY REPRODUCTION IN PART OR AS A WHOLE WITHOUT THE WRITTEN PERMISSION OF NORDIC FIBERGLASS, INC. IS PROHIBITED.

Customer Name: N/A		
DIMENSIONS ARE IN INCHES TOLERANCES: ANGLES ± 1° FRACTIONAL ± 1/2 ONE PLACE DECIMAL ±.060 TWO PLACE DECIMAL ±.030 THREE PLACE DECIMAL ±.015		
MATERIAL		
DRAWN	NAME	DATE
CHECKED	R.L.J.	07/09/08

SIZE	ITEM ID:	REV.
A	90000.24	REL-03
SCALE:1:24		SHEET 1 OF 1