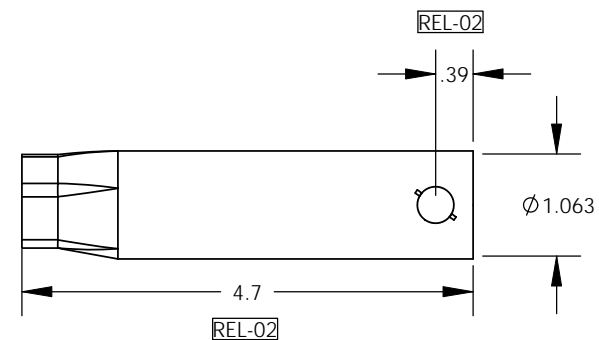
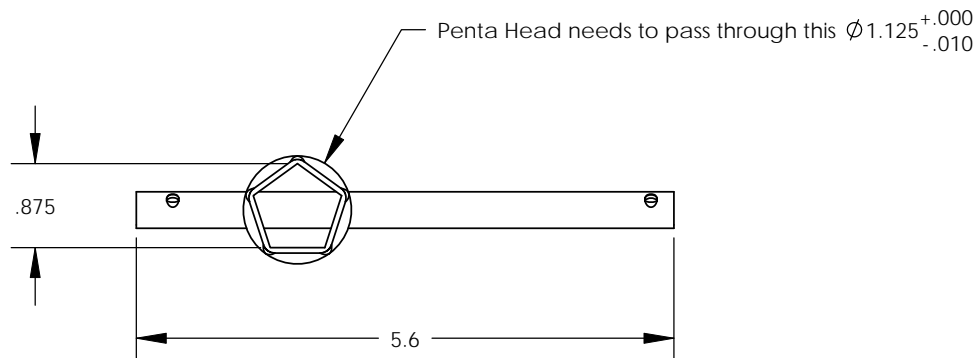
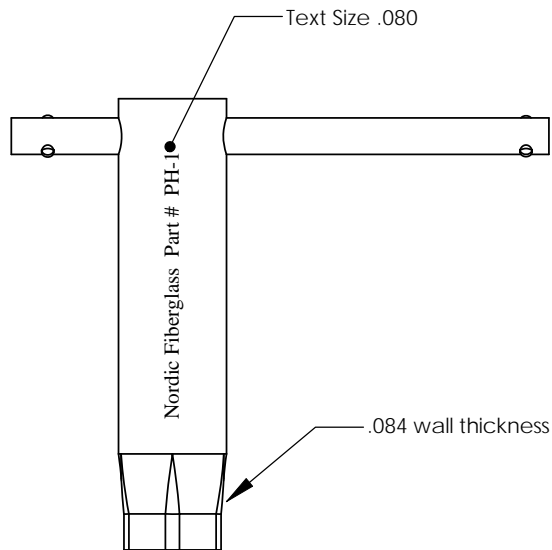


REVISIONS			
REV.	DESCRIPTION	DATE	APPROVED
REL-01		4/18/2007	
REL-02	Dropped two Dec. Places From 4.700, One Dec. Place from .390	8/27/2009	R.L.J.



Note: Finish - Clear Zinc Plate

Nordic Fiberglass, Inc.

21415 US Hwy 75 NW, Warren, MN 56762
www.nordicfiberglass.com
218-745-5095 ph. --- 218-745-4990 fax

PH-1, PENTAHEAD WRENCH

PROPRIETARY AND CONFIDENTIAL
THE INFORMATION CONTAINED IN THIS DRAWING IS THE SOLE PROPERTY OF NORDIC FIBERGLASS, INC. ANY REPRODUCTION IN PART OR AS A WHOLE WITHOUT THE WRITTEN PERMISSION OF NORDIC FIBERGLASS, INC. IS PROHIBITED.

Customer Name: N/A			
DIMENSIONS ARE IN INCHES TOLERANCES: ANGLES $\pm 1^\circ$ FRACTIONAL $\pm 1/32$ ONE PLACE DECIMAL $\pm .060$ TWO PLACE DECIMAL $\pm .030$ THREE PLACE DECIMAL $\pm .015$		MATERIAL	
		NAME	DATE
		DRAWN	G.D.M. 01/13/04
		CHECKED	--- --/--
SIZE A	ITEM ID: HAPE0001	SCALE:1:2	REV. REL-02
		SHEET 1 OF 1	