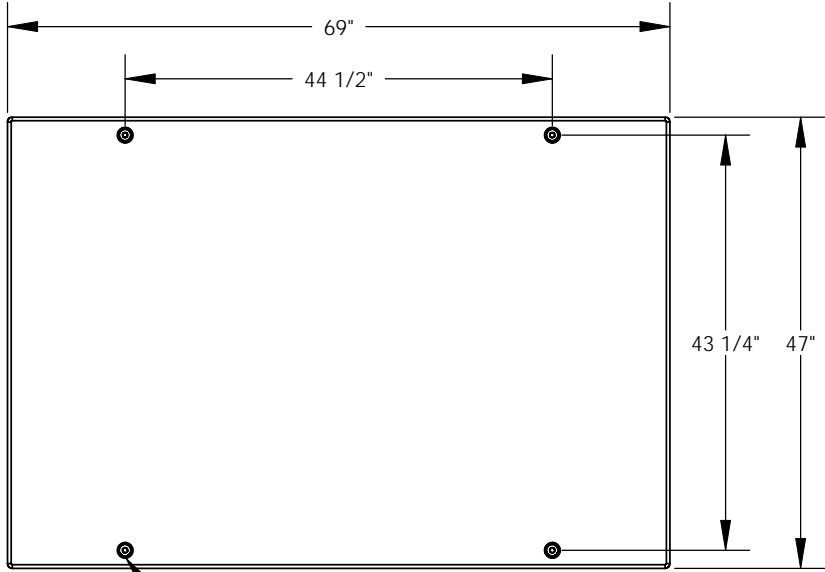
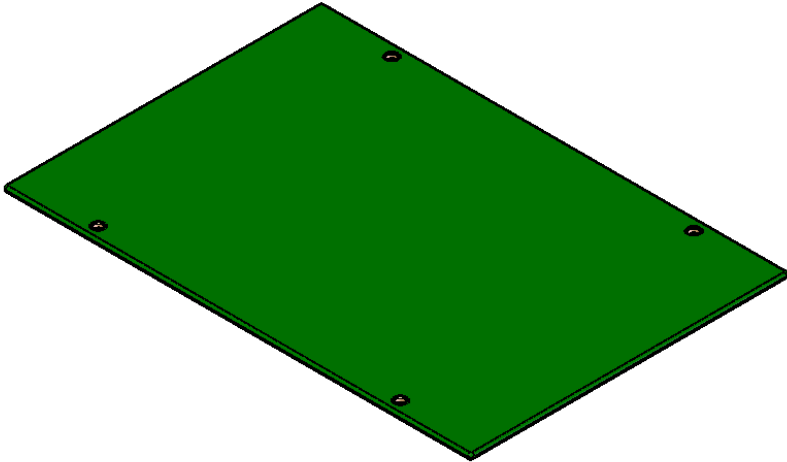
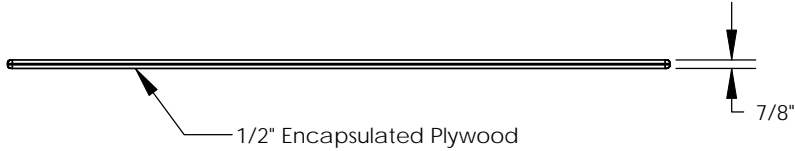


| REVISIONS |                           |           |          |
|-----------|---------------------------|-----------|----------|
| REV.      | DESCRIPTION               | DATE      | APPROVED |
| REL-01    |                           | 6/7/2006  |          |
| REL-02    | Changed from 3/4" Plywood | 10/8/2007 | P.J.W.   |



Brass Pentahead Cup  
4x



1/2" Encapsulated Plywood

NOTE:  
Includes (4) 3/8-16x1.5  
SST Pentahead Bolts

**Nordic Fiberglass, Inc.**  
21415 US Hwy 75 NW, Warren, MN 56762  
www.nordicfiberglass.com  
218-745-5095 ph. --- 218-745-4990 fax

GSC-69-47-MG

**PROPRIETARY AND CONFIDENTIAL**  
THE INFORMATION CONTAINED IN THIS DRAWING IS THE SOLE PROPERTY OF  
NORDIC FIBERGLASS, INC. ANY REPRODUCTION IN PART OR AS A WHOLE  
WITHOUT THE WRITTEN PERMISSION OF NORDIC FIBERGLASS, INC. IS PROHIBITED.

|   |        |          |
|---|--------|----------|
| Customer Name: N/A  |        |          |
| DIMENSIONS ARE IN INCHES<br>TOLERANCES: ANGLES $\pm 1^\circ$<br>FRACTIONAL $\pm 1/32$<br>ONE PLACE DECIMAL $\pm .060$<br>TWO PLACE DECIMAL $\pm .030$<br>THREE PLACE DECIMAL $\pm .015$ |        |          |
| MATERIAL  |        |          |
|   | NAME   | DATE     |
| DRAWN   | P.J.W. | 06/07/06 |
| CHECKED   | ---    | --/--/-- |

|            |          |               |
|------------|----------|---------------|
| SIZE       | ITEM ID: | REV.          |
| <b>A</b>   | 02200.00 | <b>REL-02</b> |
| SCALE:1:20 |          | SHEET 1 OF 1  |