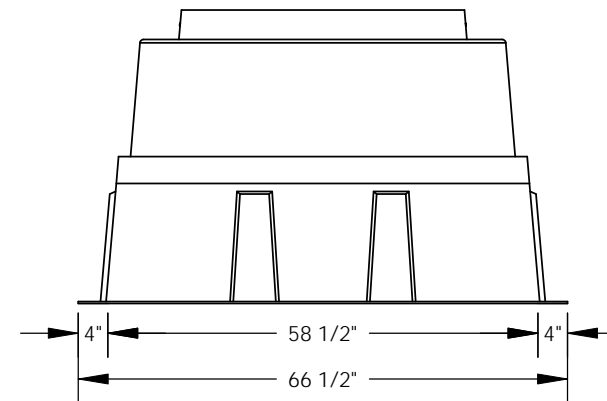
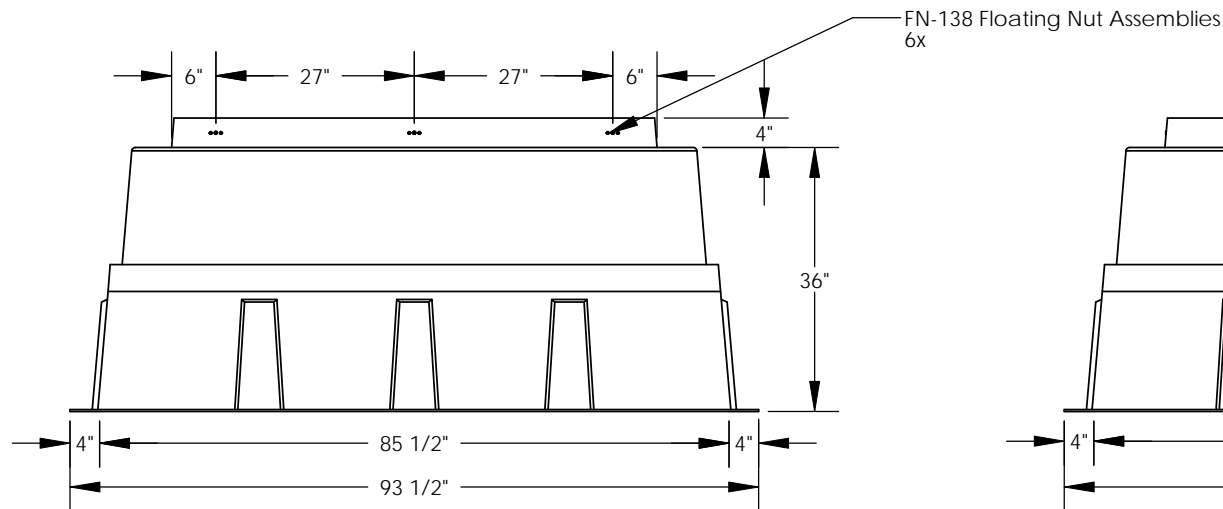
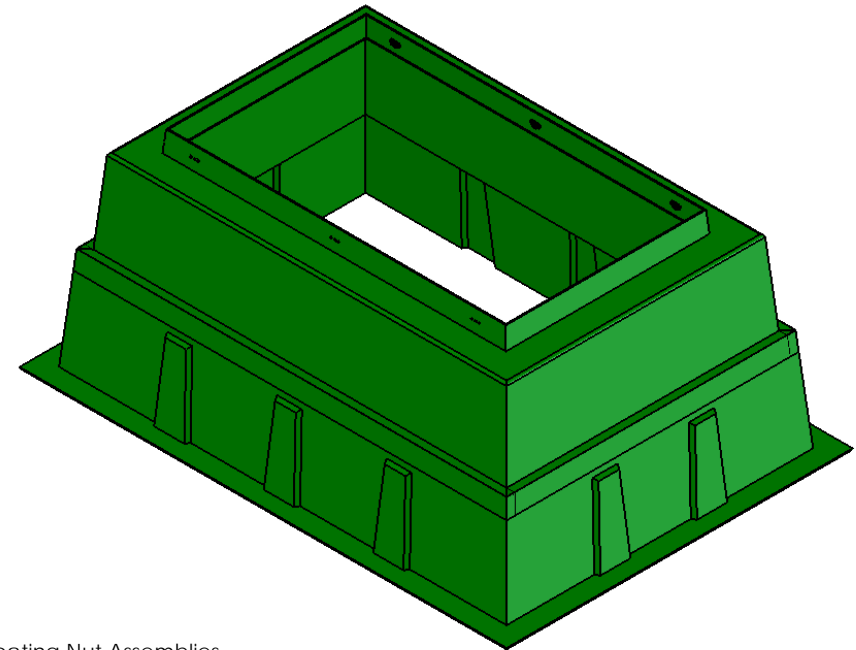
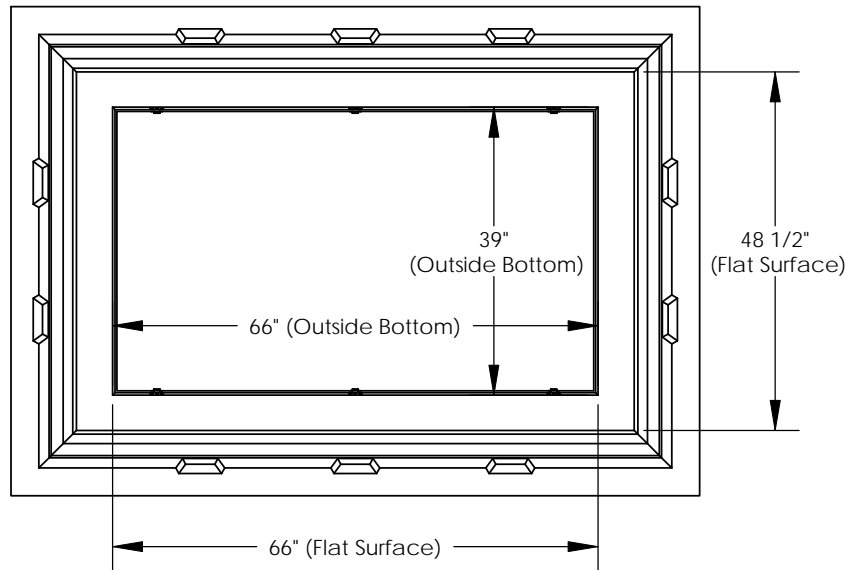


REVISIONS			
REV.	DESCRIPTION	DATE	APPROVED



Includes:
 6 - 3/8"-16x1 1/2 SS HH Bolts
 6 - 3/8" Flat Washers

Nordic Fiberglass, Inc.

21415 US Hwy 75 NW, Warren, MN 56762
 www.nordicfiberglass.com
 218-745-5095 ph. --- 218-745-4990 fax

PROPRIETARY AND CONFIDENTIAL
 THE INFORMATION CONTAINED IN THIS DRAWING IS THE SOLE PROPERTY OF
 NORDIC FIBERGLASS, INC. ANY REPRODUCTION IN PART OR AS A WHOLE
 WITHOUT THE WRITTEN PERMISSION OF NORDIC FIBERGLASS, INC. IS PROHIBITED.

Customer Name: N/A			ND-350-MG-36EXT		
DIMENSIONS ARE IN INCHES TOLERANCES: ANGLES $\pm 1^\circ$ FRACTIONAL $\pm 1/2$ ONE PLACE DECIMAL $\pm .060$ TWO PLACE DECIMAL $\pm .030$ THREE PLACE DECIMAL $\pm .015$			MATERIAL		
	NAME	DATE	SIZE	ITEM ID:	REV.
DRAWN	R.L.J.	10/30/07	A	02860.97	REL-01
CHECKED	---	---/---/---	SCALE:1:32		SHEET 1 OF 1