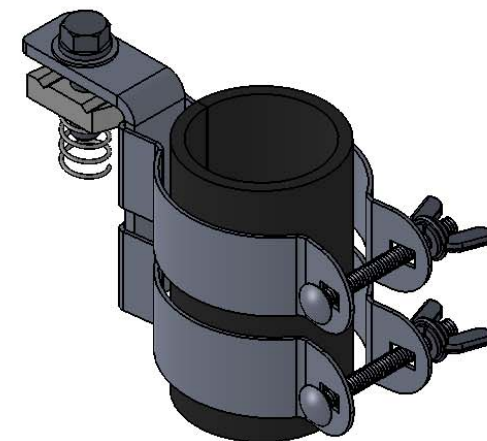
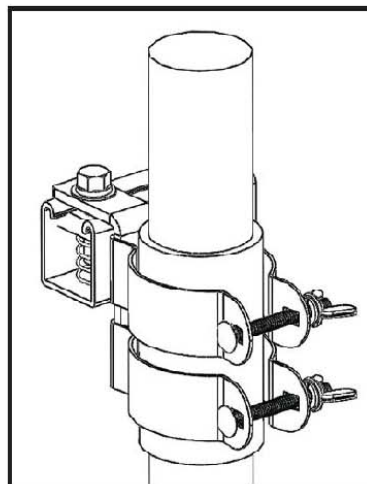
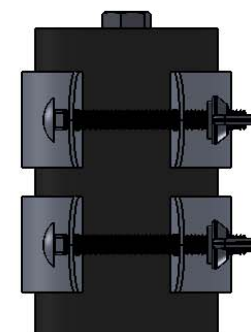
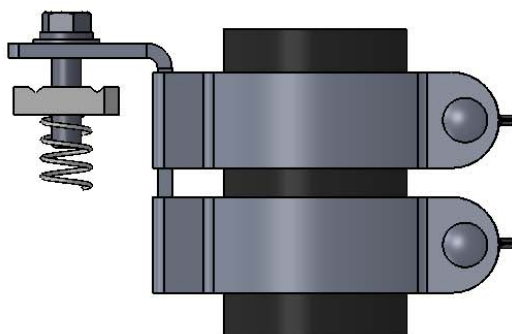


Nordic Fiberglass Cable Clamp Installation Instructions **NCC-1825 - Accommodates Cable O.D. Range: 1.80" - 2.50"**

1. Slide the rubber sleeve and cable mounting bracket around the cable and position the bolt hole over the top of strut channel and center it.
2. Make sure the rubber sleeve is centered around the cable bracket.
3. Insert the carriage head bolts, install washers and tighten wing nuts to securely fasten the cable bracket to the cable.
4. Install the spring nut into the strut channel and center it below the cable bracket's bolt hole.
5. Install the 3/8" flat & lock washer with the 3/8" hex head bolt and put the bolt through the cable mounting bracket hole and tighten it to the spring nut.



Nordic Fiberglass Inc. - phone: 218-745-5095 - email: info@nordicfiberglass.com



PROPRIETARY AND CONFIDENTIAL
 THE INFORMATION CONTAINED IN THIS DRAWING IS THE SOLE PROPERTY OF
 NORDIC FIBERGLASS, INC. ANY REPRODUCTION IN PART OR AS A WHOLE
 WITHOUT THE WRITTEN PERMISSION OF NORDIC FIBERGLASS, INC. IS PROHIBITED.

Customer Name: N/A		
DIMENSIONS ARE IN INCHES		
TOLERANCES: ANGLES $\pm 1^\circ$		
FRACTIONAL $\pm 1/2$		
ONE PLACE DECIMAL $\pm .060$		
TWO PLACE DECIMAL $\pm .030$		
THREE PLACE DECIMAL $\pm .015$		
MATERIAL		
	NAME	DATE
DRAWN	R.L.J.	01/14/15
CHECKED	---	--/--/---

Nordic Fiberglass, Inc.

21415 US Hwy 75 NW, Warren, MN 56762
www.nordicfiberglass.com
 218-745-5095 ph. --- 218-745-4990 fax

NCC-1825, Large Cable Clamp

SIZE	ITEM ID:	REV.
A	90000.85	REL-01
SCALE: 1:4	SHEET 1 OF 1	