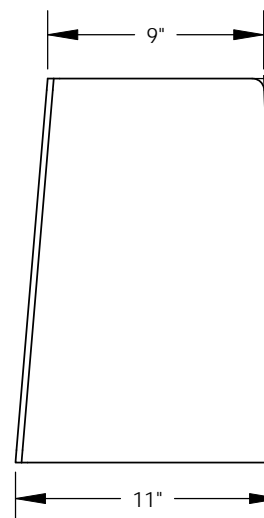
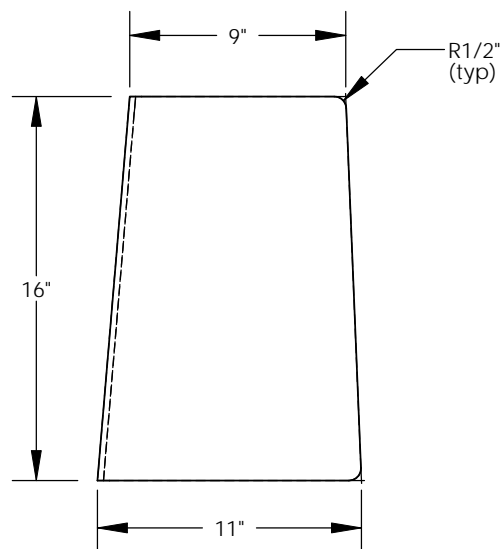
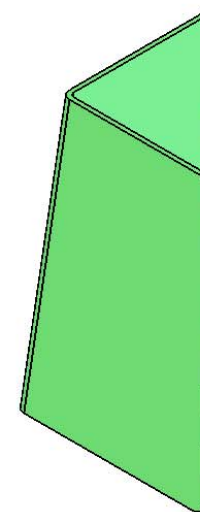
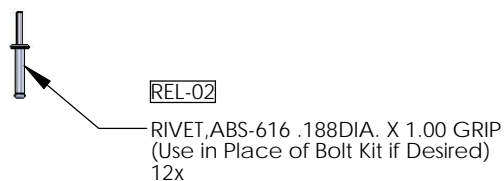
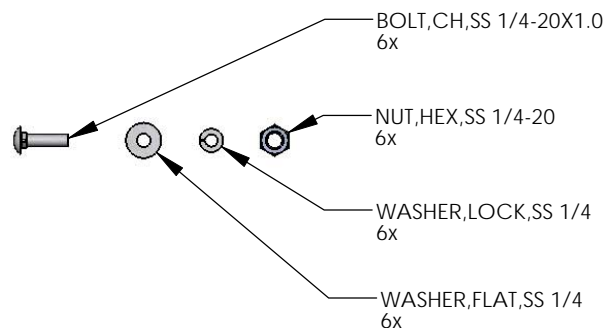
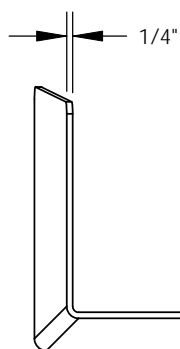


REVISIONS			
REV.	DESCRIPTION	DATE	APPROVED
REL-01		7/8/2008	
REL-02	Added 12 ABS-616 Rivets to Kit	3/18/2009	R.L.J.



Notes:
Bolt/Rivet pattern to be determined
and Drilled by Installer

Silicone Caulking used upon Installation

Rivet Gun Supplied by Installer for Rivet
Installation

PROPRIETARY AND CONFIDENTIAL
THE INFORMATION CONTAINED IN THIS DRAWING IS THE SOLE PROPERTY OF
NORDIC FIBERGLASS, INC. ANY REPRODUCTION IN PART OR AS A WHOLE
WITHOUT THE WRITTEN PERMISSION OF NORDIC FIBERGLASS, INC. IS PROHIBITED.

Customer Name: N/A		
DIMENSIONS ARE IN INCHES TOLERANCES: ANGLES $\pm 1^\circ$ FRACTIONAL $\pm 1/2$ ONE PLACE DECIMAL $\pm .060$ TWO PLACE DECIMAL $\pm .030$ THREE PLACE DECIMAL $\pm .015$		
MATERIAL		
	NAME	DATE
DRAWN	M.F.K.	07/08/08
CHECKED	---	--/--/--

Nordic Fiberglass, Inc.

21415 US Hwy 75 NW, Warren, MN 56762
www.nordicfiberglass.com
218-745-5095 ph. --- 218-745-4990 fax

NRK-3-WG, CORNER REPAIR KIT

SIZE	ITEM ID:	REV.
A	03125.02	REL-02
SCALE: 1:8		SHEET 1 OF 1