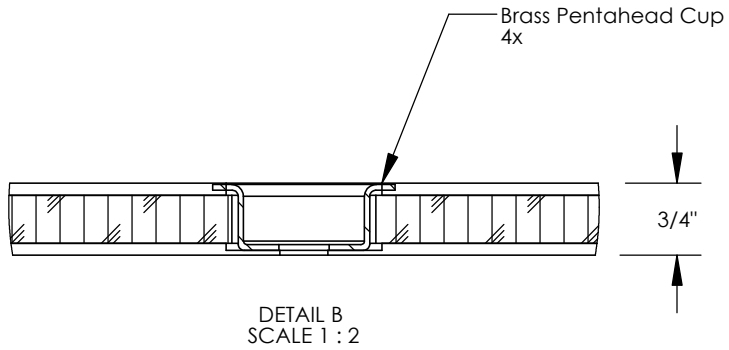
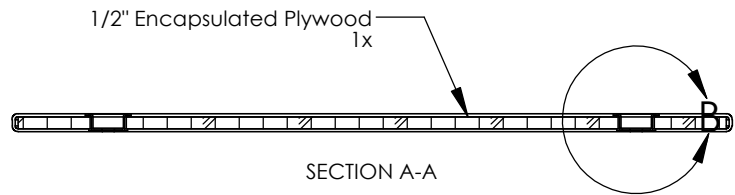
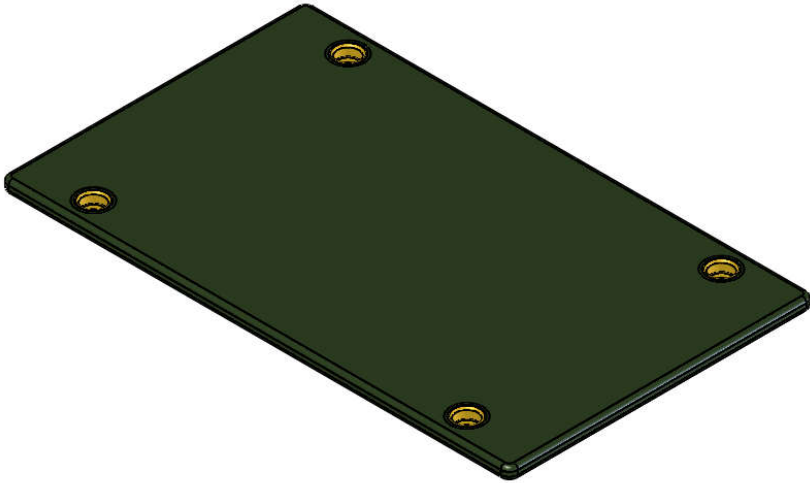
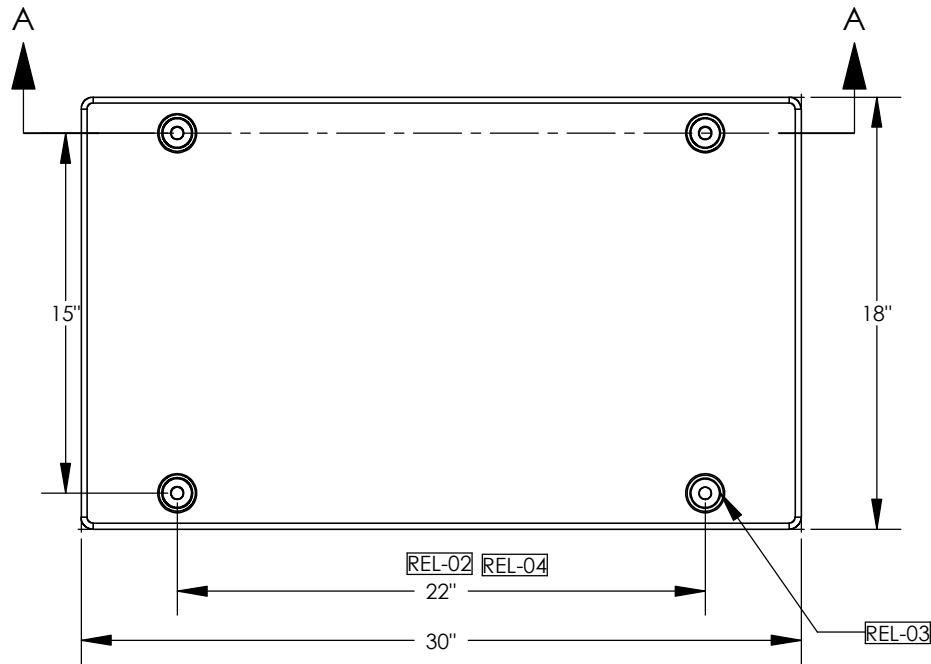


REVISIONS			
REV.	DESCRIPTION	DATE	APPROVED
REL-01		6/2/2006	
REL-02	Changed Penta Cup Spacing From 26 3/4"	4/7/2010	R.L.J.
REL-03	Updated Pentacup Placement and Qty From 2	8/20/2014	R.L.J.
REL-04	Changed Penta Cup Spacing from 27"	4/17/2019	M.F.K.



Includes (4) 3/8-16x1.5" SST Pentahead Bolts

Nordic Fiberglass, Inc.
 21415 US Hwy 75 NW, Warren, MN 56762
 www.nordicfiberglass.com
 218-745-5095 ph. --- 218-745-4990 fax

PROPRIETARY AND CONFIDENTIAL
 THE INFORMATION CONTAINED IN THIS DRAWING IS THE SOLE PROPERTY OF NORDIC FIBERGLASS, INC. ANY REPRODUCTION IN PART OR AS A WHOLE WITHOUT THE WRITTEN PERMISSION OF NORDIC FIBERGLASS, INC. IS PROHIBITED.

Customer Name: N/A		
DIMENSIONS ARE IN INCHES		
TOLERANCES: ANGLES $\pm 1^\circ$		
FRACTIONAL $\pm 1/2$		
ONE PLACE DECIMAL $\pm .060$		
TWO PLACE DECIMAL $\pm .030$		
THREE PLACE DECIMAL $\pm .015$		
MATERIAL		
DRAWN	NAME	DATE
	P.J.W.	06/02/06
CHECKED	---	--/--

GSC-30-18-MG		
SIZE	ITEM ID:	REV.
A	02100.00	REL-04
SCALE:1:8	SHEET 1 OF 1	