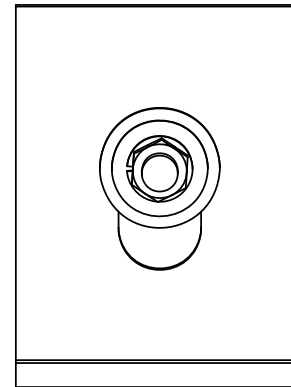
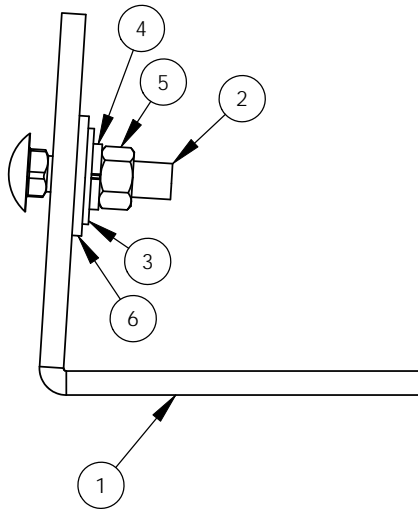
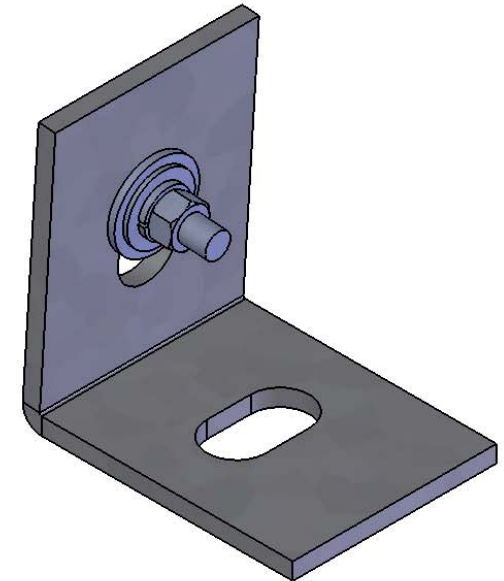


ITEM NO.	PART NUMBER	DESCRIPTION	QTY
1	HAMI0023	CAB-1, GALVANIZED CABINET ANCHOR	4
2	HABO0015	BOLT, CH, SS 3/8-16X1.5	4
3	HAWA0013	WASHER, FLAT, SS 3/8	4
4	HAWA0012	WASHER, LOCK, SS 3/8	4
5	HANU0009	NUT, HEX, SS 3/8-16	4
6	HAWA0005	WASHER, FLAT, SS 1/2	4
7	PABA0002	BAG, CLOTH BOLT 4x6	1

REVISIONS			
REV.	DESCRIPTION	DATE	APPROVED



NOTE:  
 CAB-1 Brackets to be Secured to Mounting Plate Ground Nut, Remaining Hardware to Be Enclosed in a Bolt Bag and Tied to Parking Stand

### Nordic Fiberglass, Inc.

21415 US Hwy 75 NW, Warren, MN 56762  
 www.nordicfiberglass.com  
 218-745-5095 ph. --- 218-745-4990 fax

CAS-1, CABINET ANCHOR SYSTEM

**PROPRIETARY AND CONFIDENTIAL**  
 THE INFORMATION CONTAINED IN THIS DRAWING IS THE SOLE PROPERTY OF NORDIC FIBERGLASS, INC. ANY REPRODUCTION IN PART OR AS A WHOLE WITHOUT THE WRITTEN PERMISSION OF NORDIC FIBERGLASS, INC. IS PROHIBITED.

Customer Name: N/A		
DIMENSIONS ARE IN INCHES		
TOLERANCES: ANGLES $\pm 1^\circ$		
FRACTIONAL $\pm 1/2$		
ONE PLACE DECIMAL $\pm .060$		
TWO PLACE DECIMAL $\pm .030$		
THREE PLACE DECIMAL $\pm .015$		
MATERIAL		
	NAME	DATE
DRAWN	P.J.W.	08/06/07
CHECKED	---	--/--/---

SIZE	ITEM ID:	REV.
<b>A</b>	03235.01	<b>REL-01</b>
SCALE:1:2		SHEET 1 OF 1