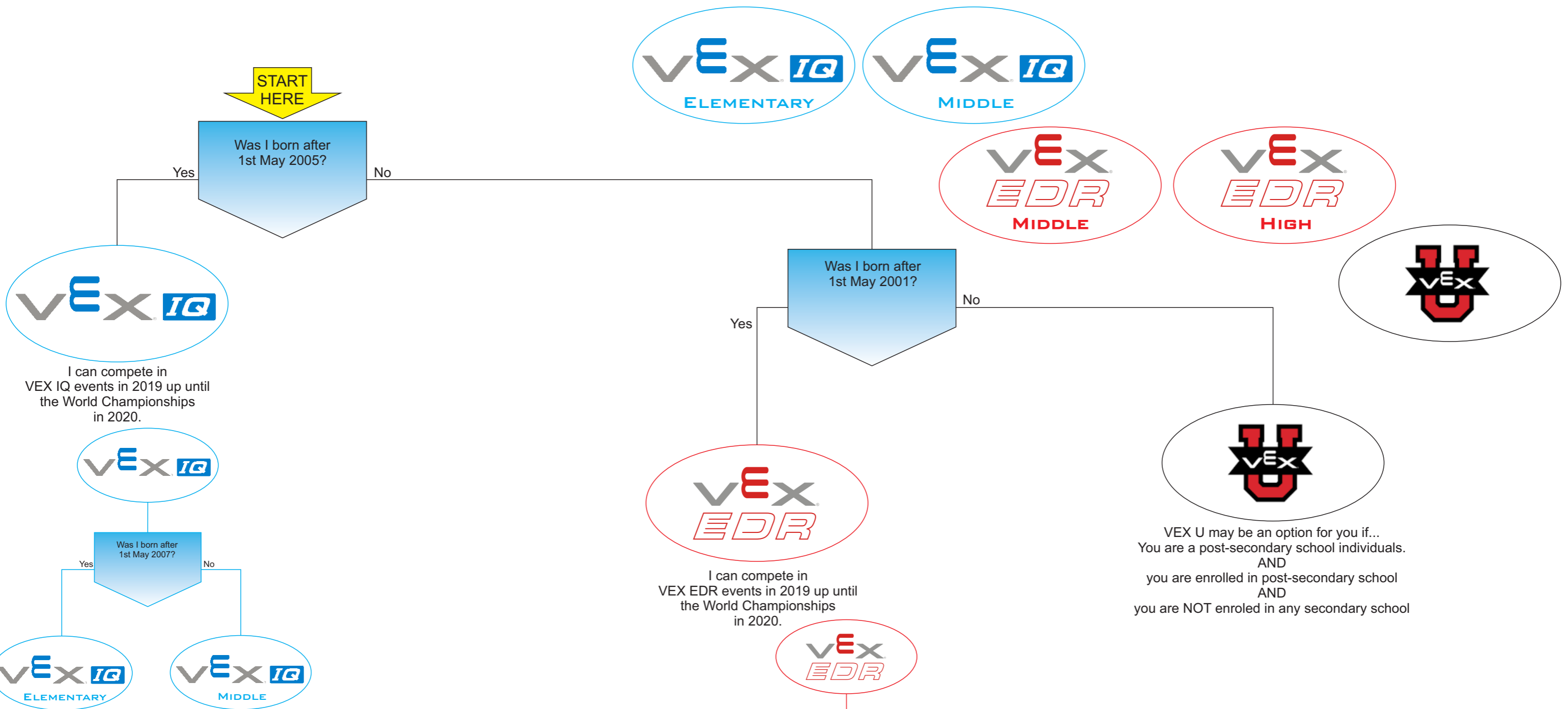


What sort of VEX student am I in 2019*?



Answered by Game Design Committee

The definitions of Student and Team will be updated in the June 14th Game Manual update to state the following:

Student - Anyone born after May 1, 2005 (i.e. who will be 14 or younger at VEX Worlds 2020). Eligibility may also be granted based on a disability that has delayed education by at least one year. Students are the individuals who design, build, repair, and program the Robot with minimal adult assistance.

• **Elementary School Student** - Any Student born after May 1, 2007 (i.e. who will be 12 or younger at VEX Worlds 2020). Elementary School Students may "play up" and compete as a Middle School Student.

• **Middle School Student** - Any eligible Student that is not an Elementary School Student.

Team - Two or more Students make up a Team. A Team is classified as an Elementary School Team if all members are Elementary School Students. A Team is classified as a Middle School Team if any members are Middle School Students, or made up of Elementary School Students who declare themselves "playing up" as Middle School Students by registering their team as a Middle School Team. Once declared and playing as a Middle School Team, that team may not change back to an Elementary School Team for the remainder of the season. Teams may be associated with schools, community/youth organizations, or a group of neighborhood Students.



* I can compete in VEX EDR if I am allowed to compete in VEX IQ.
I can compete at a higher grade but not at a lower grade.

All teams must sign the VEX/Kiwibots Waiver if they want to compete.