

ENRICH in Brazil

INNOVATION & MATCHMAKING TOUR TO BRAZIL

23 – 27 September 2019

A unique networking opportunity for organisations operating in the area of Bioeconomy,
(Renewable) Energies and technologies applied to these sectors!

The ANPEI Conference 2019 is part of the programme - known as one of the main conferences
in Brazil when it comes to Innovation!

JOIN THE TOUR!

Follow the link to save your spot: <https://bit.ly/2VAsmTh>



ENRICH is an initiative of the European Union, executed in Brazil by the CEBRABIC project that has received funding from the European Union's Horizon 2020 research and innovation programme under grant agreement No 733531. Responsibility for the information and the views set out in this publication lies entirely with the authors.

WHAT IS THE MATCHMAKING & INNOVATION TOUR



WHY YOU SHOULD JOIN

- ❖ Establish contacts & increase your network
- ❖ Internationalize your business and research ideas, products and services to Brazil
- ❖ Increase technological cooperation capacities towards Brazilian market
- ❖ Find your research and technology collaboration partners from Brazil



FOCUS TOPICS

- ❖ Bioeconomy
- ❖ (Renewable) Energy
- ❖ & technology applied to these sectors (ICT)



WHERE & WHEN?

- ❖ Foz do Iguaçu
- ❖ Curitiba

23 – 27 September 2019

TOUR PACKAGE

Includes:

- ❖ ANPEI conference ticket
- ❖ All visits, roundtables, workshops and matchmaking events (see program)
- ❖ Coffee Breaks & Lunch: Sept. 25-27
- ❖ Dinner on Sept. 25

PRICE

Participation fee: 180 €

This does not include: Airline tickets (to and from Brazil & domestic flights), accommodation, travel insurance, other expenses such as taxi, internet, phone call, etc.



SAVE YOUR SPOT

- ❖ Fill in the [registration form](#)
- ❖ Link: <https://bit.ly/2VAsmTh>
- ❖ Application deadline:

20 August 2019 !

Bioeconomy, (renewable) Energy and the related ICT Sector - ENRICH in Brazil Matchmaking Tour Info Session



WEBINAR

LINK TO WEBINAR RECORDING: <http://brazil.enrichcentres.eu/index.php?post=4366>

Watch the webinar organised by ENRICH in Brazil to get further insights about what you will need before taking off to Brazil!

The webinar introduces Paraná and explores the potential of the ICT, Bio-economy and renewable energy sector and provides useful information about the ANPEI Conference and practical details regarding the five-day event taking place in September.

Contents:

02 Min – ENRICH in Brazil: Welcome

10 Min – The Brazilian State Paraná: Facts & Figures about the state of the Iguaçu Waterfalls

10 Min – The state Paraná and its ICT Sector

10 Min - The state Paraná, its bioeconomy potential and the renewable energy sector

10 Min – Information about the ANPEI Conference @ Foz do Iguaçu

10 Min - ENRICH in Brazil Innovation & Matchmaking Tour: Overview & Practical Information

08 Min - Q & A

©wikicommons

ENRICH in Brazil
**INNOVATION & MATCHMAKING
TOUR TO BRAZIL**

23 – 27 September 2019

WHY BRAZIL | WHY PARANÁ



Brazil is a beautiful country with abundant breath-taking scenery, ranging from rainforests and wetlands to dry lands and endless beaches. This diversity is also seen in the Brazilian cultural aspects: being a mixture of mainly native American, Portuguese, and African peoples, the country comprises a plural and eclectic culture. This melting-pot manifests itself through various ways: art, language, music, food, celebrations, in virtually every aspect of the Brazilian life.

Paraná, with the city of Curitiba as its capital, is one of the 26 states of Brazil, strategically located in the south of the country, bordered on the north by São Paulo state, on the east by the Atlantic Ocean, on the south by Santa Catarina state and Argentina, and on the west by Mato Grosso do Sul and Paraguay. Therefore it provides the best access to Mercosur, a market with a GDP of 1.3 trillion US\$ and 260 million consumers.

Paraná has a well-diversified economy and contributes 402 billion US\$ to the GDP of Brazil, the 5th largest in the country. It is one of the best destinations for investment and business in Brazil, being one of the largest technological area and has the second largest cargo port in the country. Its surface area is approx. 200,000 km² and it is subdivided into 399 municipalities.

At the border with Argentina is the National Park of Iguaçu, considered by UNESCO as a World Heritage site. At only 40 km from there, at the border with Paraguay, the largest dam in the world was built, the Hidroelétrica de Itaipu (Itaipu Hydroelectric Dam).

Paraná with its natural conditions offers the perfect fit to explore the potential and possibilities of the sectorial topics bioeconomy, renewable energies as well as the ICT related connection.





WHY BRAZIL

ENERGY SECTOR

Energy derived from renewable resources is not a new thing. Brazil's continuous commitment to renewable energy, rich natural resources and the highly-efficient agricultural industry made it one of the world's ten largest electricity producers.

Nearly 85% of the domestic electricity is derived from renewable resources where hydropower accounts for 75%. For decades, hydroelectric power generators were utilized to produce a relatively high share of domestic energy supply. Paraná is the largest producer of electric power in the country and generates approx. 25% of the total energy consumed. Yet, biofuels is another strength of Brazilian renewables. In fact, Brazil is the world leader in production of biofuels. Nevertheless, Brazil is in the process of rapidly diversifying its energy portfolio by wind, photovoltaics and biomass.

BIOECONOMY

For decades, production and consumption of ethanol was one of the successful biotechnological commodities. The Brazilian bioethanol industry is now the second largest in the world accounting for a quarter of total domestic fuel consumption. The country has a well-established innovative agricultural sector, strong background in tropical agricultural research, biodiversity, high-ranking academic sector and a well-structured business flora, all of which represent a promising foundation for a successful bioeconomy.



SCHEDULE

| DAY 1

**September
23th, Monday**

ARRIVAL: FIRST IMPRESSION AND ROUNDTABLE DISCUSSION

(Location: Curitiba, FIEP, PR)

Curitiba, PR

- 09:00 Welcome & Introduction
- 09:30 Workshop & Roundtable Discussions (PART 1)
 - Stream 1: State-of-the Art in Brazil in the area of Biotechnology, (Renewable) Energy & technology applied to these sectors
 - Stream 2: Funding and investments
- 12:00 Lunch & Tour through the Industry Federation of Paraná (FIEP)
- 13:00 Workshop & Roundtable Discussions (PART 2)
 - Stream 3: Setting up a business in Brazil (legal, incentives, programs, tax)
- 14:30 Industry Visit – TECPAR – Technology Institute
- 18:30 Welcome Drinks & Networking Session



INDUSTRY VISITS

Organisations to be visited

TECPAR

The Paraná Institute of Technology (TECPAR) that aims to develop RDI contributing to the sustainable technological advancements in Brazil. TECPAR focuses in four main areas:

- Health Industry;
- Technological development and innovation;
- Innovative technological entrepreneurship;
- Education (e-education)

TECPAR is also the entity responsible for implementing the Smart Energy Paraná Programme.

<http://portal.tecpar.br/>

Industry Federation of Paraná (FIEP)

The CNI – the National Confederation of Industry, was founded in Brazil in 1938, with the aim of accelerating, facilitating, and making sustainable the process of industrialization of a country of 8.5 million square kilometers, which today has nearly 208 million inhabitants, and about 700 thousand industries of different kind, sector and size. CNI defends the interests of Brazilian industries, positioning itself as the main interlocutor of this sector with the executive, legislative and judicial institutions of the country, and it works in partnership with numerous organizations in Brazil and around the world. CNI represents Brazil's 27 industrial federations and 1,250 sectoral employers' unions.

It is in this context that the Federation of Industries of the State of Paraná, one of the most active arms of the Brazilian industrial system, both in terms of general education and professional education, as well as safety and well-being at work and innovation, can share its international experience in the application of the principles, methodologies and quality practices of the management of vocational schools, with a view to public-private partnership, which aims at increasing productivity and systemic competitiveness of enterprises, as well as sustainable economic development through education.

<http://www.fiepr.org.br/>

SCHEDULE

| DAY 2 & 3

September 24th, Tuesday	INSTITUTIONAL VISITS - State of the Art of Technology in Brazil (Location: Curitiba, PR) 08:30 Industry Visit - Science and Technology Centre- <u>LACTEC</u> 12:00 Lunch Break 14:00 Matchmaking Session @FIEP: with start ups, accelerators and thematic organisations from Paraná seeking for European partners <i>Flight to Foz do Iguaçu</i>	Curitiba, PR
September 25th, Wednesday	INSTITUTIONAL VISITS - State of the Art of Technology in Brazil (Location: Foz do Iguaçu, PR) 09:00 Industry Visit of <u>ITAIPU</u> (incl. Tech Dialogue) 12:00 Lunch Break 13:00 Industry Visit of <u>Parque Tecnológico Itaipu (PTI)</u> incl. Visit at <u>CIBiogas</u> 20:00 Tour Dinner	Foz do Iguaçu, PR



INDUSTRY VISITS

Organisations to be visited

LACTEC

Lactec is one of the biggest science and technology institutes in Brazil providing key solutions to specific sectors. LACTEC is composed of 5 units in Curitiba and one in Salvador (BA) providing technological services, laboratory analysis, RDI projects, consultancy and technical training (short term courses and master degrees). Main areas:

- Environmental
- Automotive
- Construction
- Electrics/Electronics
- Energy
- Manufacturing
- Petroleum and Gas
- Information Technology

<http://www.lactec.org.br/en/About-us/>

ITAIPU & Parque Tecnológico Itaipu (PTI)

The **Itaipu Dam** is a hydroelectric dam on the Paraná River located on the border between Brazil, Paraguay and Argentina and it is considered the biggest in the world.

The **Itaipu Technological Park** is a legacy of ITAIPU that bets on the seed of knowledge as a transforming factor of a society. Its fruits are already seen in more than 7,000 people, linked to more than 50 entities installed in the Park, which circulate daily through its facilities. This legacy is no longer exclusive to Itaipu, it is of the whole society, which is represented there by countless partners. In addition, we are encouraged, as public managers, to strengthen their actions and consolidate PTI as a fundamental entity for the Western Region, the State of Paraná and Brazil.

<https://www.itaipu.gov.br/en>

CIBiogás - Energias Renováveis

The International Center on Renewable Energy – Biogás CIBiogás-ER is a science, technology and innovation non profit institution, with administrative and financial autonomy, in accordance to its statute. CIBiogás comprises 20 institutions that develop and/or support projects related to renewable energies.

Headquarters: Itaipu Technology Park (PTI), Foz do Iguaçu (Paraná-Brazil).

Biogas Laboratory: implemented at CIBiogás headquarters, with the purpose to analyze the biogas production potential from different biomasses (organic material use as energy source).

Eleven National Demonstration Units: producing biogas in small and medium rural properties and cooperatives in the western Paraná, proving the technical viability to produce energies from biogas.

<https://www.cibiogas.org/en>

SCHEDULE

DAY 4 & 5

September 26th, Thursday	ANPEI CONFERENCE (Location: Foz do Iguaçu, PR) 09:00 – 18.00 <u>ANPEI Conference</u> <i>Dedicated ENRICH in Brazil Session / Workshop & possibility for the participants to present their business and ideas to a broader audience at the conference</i>	Foz do Iguaçu, PR
September 27th, Friday	ANPEI CONFERENCE & Closing Session (Location: Foz do Iguaçu, PR) 09:00 Participation at the <u>ANPEI Conference</u> 12:00 Lunch Break 14:00 Roundtable: Research & Innovation Funding in Brazil 16:00 Closing Session: Wrap-up of Innovation Tour; Final remarks	Foz do Iguaçu, PR





ANPEI INNOVATION CONFERENCE

How to Innovate Innovation?

**THE BIGGEST MULTISECTORAL INNOVATION
EVENT OF THE COUNTRY WITH OVER 1.500
PARTICIPANTS DEDICATED TO BUSINESS
DEVELOPMENT**

Held since 2001, the **ANPEI Innovation Conference** has established itself as a privileged forum for the meeting of representatives of companies, government agencies and institutions of STI for discussion and referral of policies and practices focused on innovation in companies and in the country.

In 2019, the event will be held from September 25 to 27, in Foz do Iguaçu - Paraná, with lectures by national and international experts, presentation of innovation cases from large companies and institutions, debates, networking, business rounds and technical visits.

How to innovate innovation? The term **Innovation X.0** is a reading of this conjuncture in constant progress. The enormous speed with which changes take place makes the act of numbering the (re) evolutions almost immediately obsolete, as the process constantly assumes new characteristics. Thus, in view of the need to understand the strategy of innovating in a new way, far beyond the concept of Industry 4.0, the purpose of the 2019 Conference is to offer a look that understands the speed with which the future is approaching.

<http://www.conferenciaanpei.org.br/a-conferencia.html>

Innovation X.0

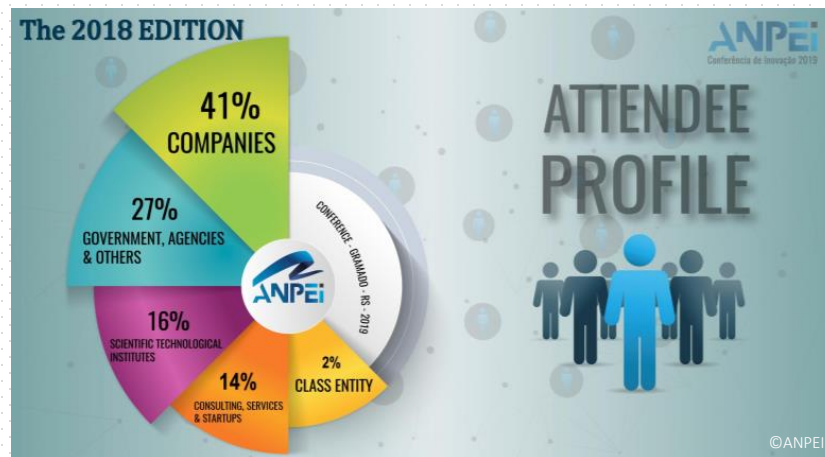


ANPEI INNOVATION CONFERENCE

CONFERENCE 2018



The ANPEI Innovation Conference is well established as the main innovation meeting in Brazil, mobilizing more than 1.500 entrepreneurs, business owners, researchers, policy makers and professionals of the National Innovation Ecosystem in each edition.





ANPEI INNOVATION CONFERENCE

PARTNERS & SPONSORS

Patrocínio Ametista



Patrocínio Pérola



Apoio Local



Parceiros Institucionais



ENRICH in Brazil PARTNERS |



SUPPORTERS ||



FOLLOW US



www.brazil.enrichcentres.eu



brazil@enrichcentres.eu



https://twitter.com/ENRICH_brazil



<https://www.facebook.com/ENRICHinBrazil>



<https://www.linkedin.com/company/11125511>



Address in Brasil: Edifício Armando Monteiro Neto, St.Bancário Norte Q.1
BL I - Brasília DF, 70040-010 Brazil, Phone:+55 6133171231

Address in Europe: at EBN, Avenue de Tervuren, 168, Bt 25, 1150 Brussels,
Belgium

Find all information on our Website!

Questions or Doubts? Please contact us at
brazil@enrichcentres.eu