

ROTATING VANE ANEMOMETERS MODELS RVA501 AND RVA801

Model RVA501

Model RVA501 is a handheld digital Rotating Vane Anemometer used for air velocity and volumetric flow measurements.

Model RVA801

Model RVA801 is a lightweight, robust, and simple to use Rotating Vane Anemometer that provides accurate and reliable readings every time. Ideal for HVAC commissioning at grilles, filters, and kitchen exhausts; the RVA801 displays readings in metric or imperial mode.

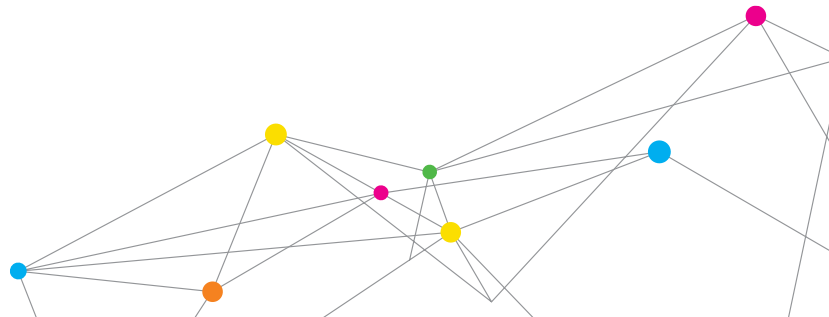


Features and Benefits (Model RVA801)

- + Reversible 4-in. (100-mm) head allows readings at supply and exhaust grilles
- + Calculates volumetric flow rate
- + Compatible with Aircone Flow Hoods
- + No density correction factors required
- + Automatic averaging of air velocity

Features and Benefits (Model RVA501)

- + Measures velocity and temperature
- + Calculates flow
- + Simultaneous display of up to three measurements
- + Log, store, and recall data
- + Download data to a PC
- + Optional telescopic probe available
- + Compatible with Aircone Flow Hoods



SPECIFICATIONS

ROTATING VANE ANEMOMETERS MODELS RVA501 AND RVA801

Velocity

Range 50 to 6,000 ft/min (0.25 to 30 m/s)
Accuracy $\pm 1.0\%$ of reading ± 4 ft/min (± 0.02 m/s)

Area Size Input

Range
RVA501 0 to 500 ft² (0 to 46.45 m²)
RVA801 0.043 to 900 ft² (0.00399 to 90 m²)

Volumetric Flow Rate

Range Actual range is a function of velocity and area

Temperature

Range 40 to 113°F (5 to 45°C)
Accuracy $\pm 2.0^\circ\text{F}$ ($\pm 1.0^\circ\text{C}$)
Resolution RVA501 0.1°F (0.1°C)
Resolution RVA801 1°F (0.1°C)

Instrument Temperature Range

Operating
(Electronics) 40 to 113°F (5 to 45°C)
Storage -4 to 140°F (-20 to 60°C)

Data Storage Capabilities (RVA501 only)

Range 12,700+ samples and 100 test IDs

Logging Interval (RVA501 only)

From 1 second to 1 hour

Time Constant (RVA501 only)

User selectable

External Meter Dimensions

RVA501 3.3 in. x 7.0 in. x 1.8 in.
(8.4 cm x 17.8 cm x 4.4 cm)
RVA801 4.5 in. x 11 in. x 2.6 in.
(1.2 cm x 28 cm x 6.5 cm)

Meter Weight with Batteries

RVA801 11.6 oz. (329 g)
RVA501 0.6 lbs. (0.27 kg)

Power Requirements

RVA801 9-volt battery
RVA501 Four AA-size batteries or AC adapter

AIRCONE FLOW HOODS

Aircone Flow Hoods are a fast and accurate method of maximizing the usefulness of your 4-in. (100 mm) rotating vane anemometers. For a modest investment, you can enhance the capability of your rotating vane, turning it into an air volume flow balancing tool.



Features and Benefits

- + Rectangular and circular cones available
- + Measures volumetric flow at small grilles and diffusers
- + Reads air volume quickly and accurately

Specifications

Aircone Flow Hoods (P/N 801750)

Range (with RVA501 or RVA801)

0 to 210 cfm (0 to 100 l/s, 0 to 360 m³/h)

Size

Rectangular Hood 11.2 in. x 9.2 in. (285 mm x 235 mm)
Round Hood 7.1 in. (180 mm) diameter

Weight (includes case)

2.4 lbs (1.1 kg)

	RVA801	RVA501
Temperature	+	+
Velocity	+	+
4-in. (100-mm) reversible head	+	+
Flow	+	+
Telescoping handle (optional)		+
Data logging, recall, review, download		+
Use with Aircone flow hoods	+	+
Certificate of Calibration	+	+

Alnor, TSI, and the TSI logo are registered trademarks of TSI Incorporated.

Specifications subject to change without notice.



Alnor Products, TSI Incorporated

Visit our website at www.alnor.com for more information.

USA
India

Tel: +1 800 874 2811
Tel: +91 80 67877200

China
Singapore

Tel: +86 10 8219 7688
Tel: +65 6595 6388