



Welcome

Ben Thomas, Chairman

Vision

We are driven by the belief that *every* child deserves an enriching education.



Values

In all that it does, Thomas's Foundation subscribes to and promotes the values of Thomas's London Day Schools:

- Kindness
- Courtesy
- Honesty
- Respect
- Perseverance
- Independence
- Confidence
- Leadership
- Humility
- Givers, not takers



Values

In addition, the Foundation commits to operate in a way which is:

- Needs-driven - meeting the needs of its beneficiaries
- Local - targeted within specific communities
- High impact - with clear, beneficial outcomes
- Cost effective - with transparent processes and clear accountability
- Sustainable - empowering people to help themselves



Mission

Thomas's Foundation, a charitable incorporated organisation, is the philanthropic arm of Thomas's London Day Schools. The Foundation seeks to realise its vision and to live out Thomas's values in the world through four causes:

- Thomas's Foundation Bursaries
- Thomas's Foundation Community Partnerships
- CAIRN; and
- Thomas's Academy



Thomas's Foundation Structure

Liz Woodcock, Executive Director



Thomas's Foundation (CIO) Registered Charity No: 1181145
Thomas's Academy, New King's Road, London SW6 4LY
T: 020 3327 4177 W: www.thomassfoundation.org.uk

Trustee Board

OUR TRUSTEES



BEN THOMAS
Chairman



ALISON CABOT
Trustee



CAROL CLARE
Trustee



ELIZABETH THOMAS
Trustee



ANNETTE DOBSON
Trustee



JOANNA EBNER
Trustee

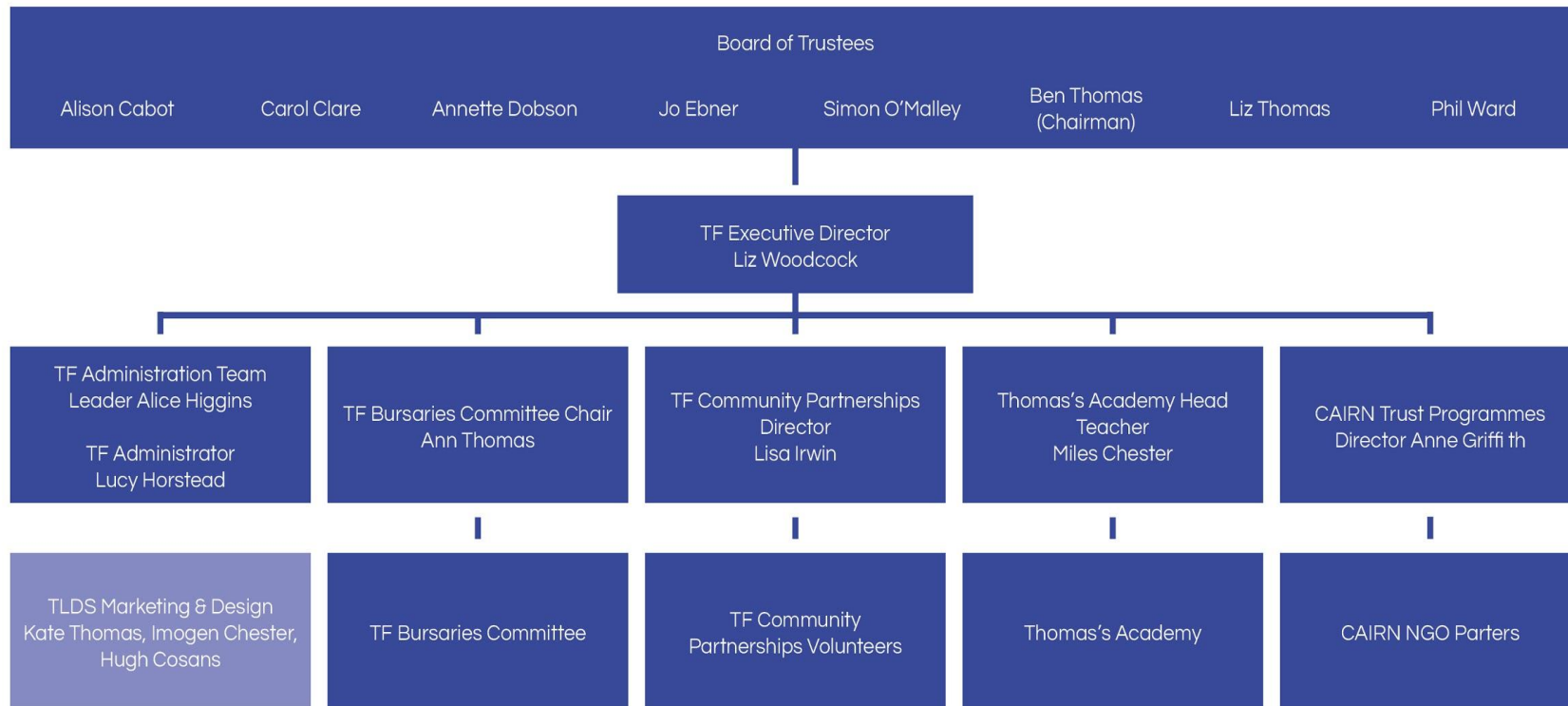


SIMON O'MALLEY
Trustee



PHIL WARD
Trustee

Roles and Responsibilities



Foundation Bursaries

Ann Thomas, Chair of the Bursary Committee

2019 Bursaries - Another Record Year

<div>9</div> <div>Foundation Bursary Children</div>	6 New Children in Year 7
	3 Children in Year 8

Who We Are - The Bursary Committee

All former Thomas's Parents

Ann Thomas

Ivana Jenkins

Jeremy Powell-Tuck

Jill Kelham

Laura Malkin

Natalie Bakker

Nerissa Guest

Robert Gray

Sam Barker

Supported by Lucy Horstead, Jo Copland, Nicola Diggle

The Bursary Process

The child must apply for a place at Thomas's and pass the assessment before applying for a bursary

The Committee meets monthly and applications are thoroughly reviewed and a home visit arranged

Discussion with the school and recommendations to The Trustees

Always consider the needs of the child...

Bursaries - Current Year 7

13 applications from 11 different schools

6 new Bursary pupils started in September, almost 10% of the year

17 new pupils started Year 7. Bursary pupils represented a third of the new intake

Average bursary 90%

Bursaries - Current Year 8

3 boys

1 boarding school place already secured

2 considering London Day Schools

Bursaries - Budget

2019/2020

- Approx. £152,000
- Based on the current 9 pupils

2020/2021

- Approx. £180,000
- Based on 10 pupils (6 current pupils and 4 new pupils)

Bursaries - Year 7 Entry (11+) Through to the End of Senior School

Each Child Approximate Cost:

£200,000

Bursaries - 2019 Leavers

Girl - Wycombe Abbey - **100% Bursary**

Boy - Whitgift - **100% Bursary**

Boy - Dulwich College - **100% Bursary and Academic Scholarship**

Boy - Dulwich College - **40% Bursary**

Thomas's Foundation Thank You



Foundation Bursaries

Community Partnerships

Lisa Irwin, Director of Community Partnerships

Community Partnerships - in a Nutshell

40 +
Partners



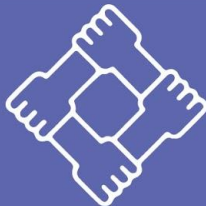
85
Funded
Projects



22
Partner
Schools



7
Community
Centres



Multiple
Collaborative
Projects



1000s
Children Impacted

45

TF Volunteers



100 +

Volunteers Readers



3500 +

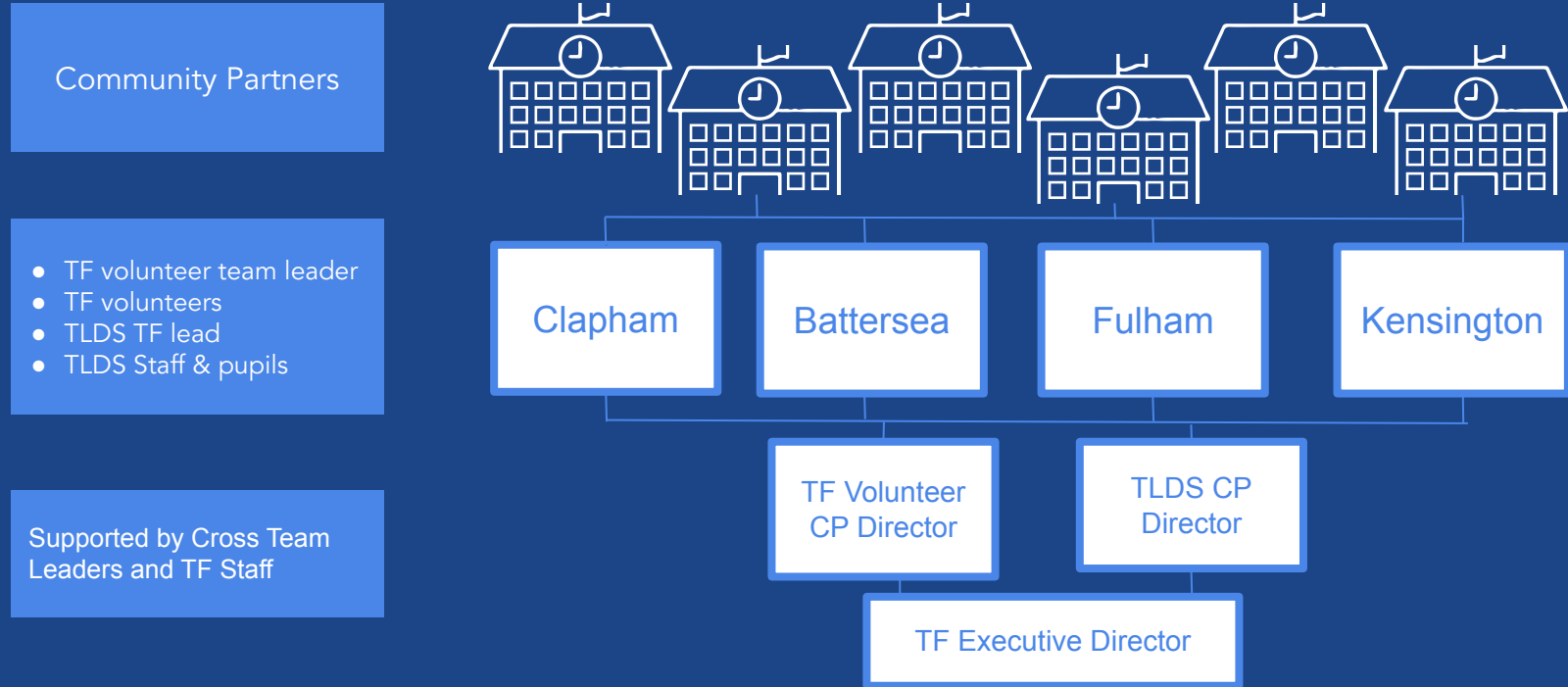
Books Donated



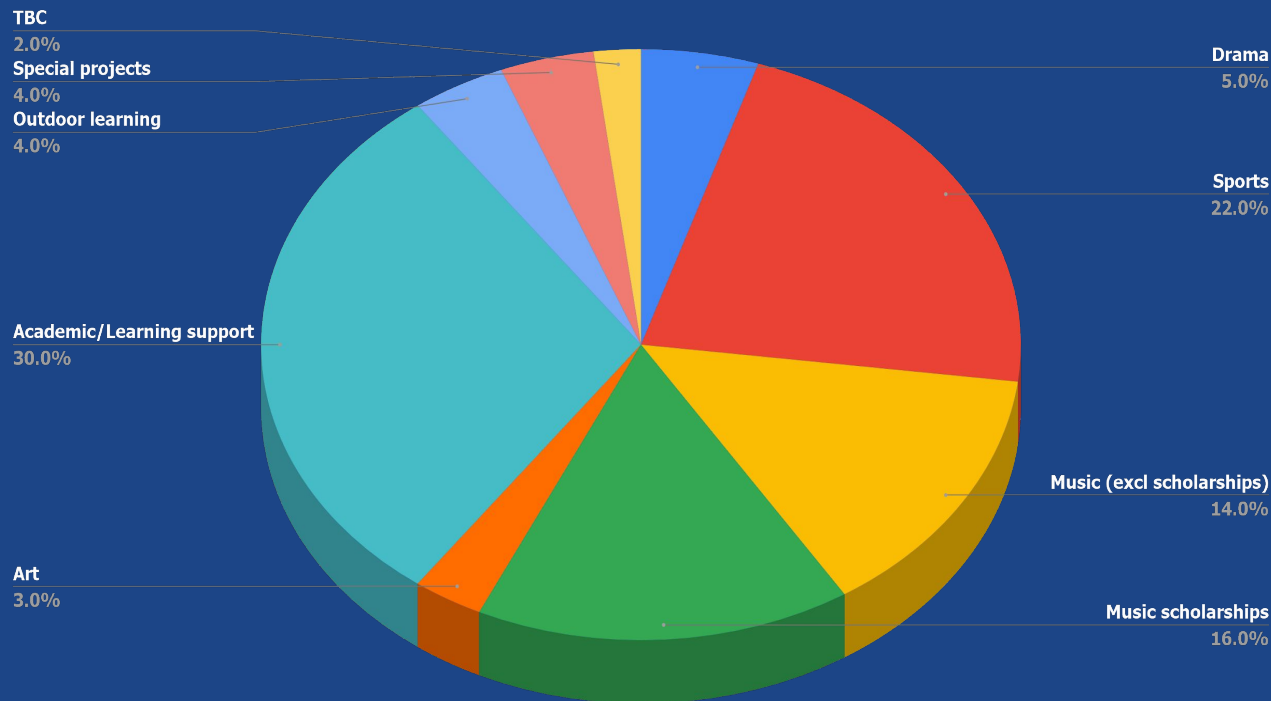
Average Thomas's Foundation partner school [40%+] Free School Meals

Average Community organisation [85%+] Free School Meals

Community Partnerships Team - Working Together



Community Partnerships - How Do We Spend Our Money



Readers' Cup

- Rounds in 4 boroughs; competitive Grand Final
- 9 pupils per school; inclusive
- High volunteer involvement
- Continual review & improvement
- Inspirational patrons

The Future. Extend concept to maths challenge.

Volunteer Reading +++

- More volunteers, more schools, more children
- Aids TF volunteer recruitment
- All neighbourhoods
- Current parents, alumni, friends

The Future. More schools. Wider recruitment.



Music Scholarships

- Have awarded 65 scholarships since 2013
- 28 scholars currently in the programme
- Continue to refine and adapt
- Amazing team
- Inspirational patron - Misha Mullov-Abbado

Looking ahead...

- Commit to 4 years regardless of entry year – will extend further into secondary (Y7+)
- Extend provision through proactive partnerships with other funders
- Provide further funding for TF 'graduate' scholars
- Track impact on secondary/further education choices



Collaborative Projects

(TLDS & TF Community Partners)

- Build on successes
- Continue to improve collaborative reach across all 4 neighbourhoods
- Provide a variety of enriching experiences
- Evaluate impact and share best practice across teams

The Future.

Enable shared 'mutually beneficial' opportunities for every Thomas's and TF Partner child



THINK

Focus efforts

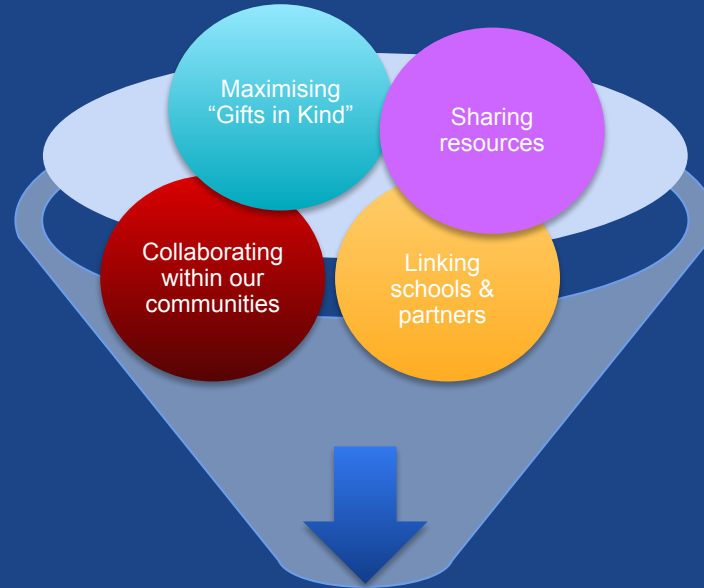
Concentrate impact

Deepen partnerships

BIG!



Community Partnerships



Battersea, Clapham,
Fulham and Kensington Communities

Enriching lives
Inspiring minds
Making an impact

Pathway

Jill Kelham, Director of Pathway

Arabella Finch, Director of Pathway Curriculum

What is Pathway?

Pathway is a one-year programme designed to give Year 5/6 ambitious pupils an enriching and stimulating academic and creative experience

- Offered to more-able, disadvantaged children from TF partner schools free of charge
- Brings together a group of like-minded children to learn, develop and share skills and interests
- Complements and extends primary school curriculum
- Monthly Saturday sessions and two full July days taught by Thomas's teachers
- Assists in preparing children to join their senior schools with ambition, confidence and broad aspirations
- Provides parents with future school option information



Pathway Pilot Year

- First cohort of 24 pupils recruited from 10 TF partner schools due to excellent Community team relationships
- Pupils nominated by headteachers based on ability, economic need and pastoral/family circumstances
- Very positive feedback from Heads, parents and pupils
- Teaching staff thoroughly enjoyed teaching Pathway pupils supported by TF volunteers each session
- Graduation 30th November. Heads and parents invited
- Participating partner schools:

Christ Church CE Primary
Fulham Primary School
John Burns Primary School
Thomas's Academy
St Faith's CE Primary School

Langford Primary School
Normand Croft Community School
Shaftesbury Park Primary School
St George's CE Primary School
Griffin Primary School



Pathway Family Assistance

- Held independent secondary school information session for Pathway families with nine schools attending
- Participating independent schools:

Alleyn's School

JAGS

Dulwich College

City of London School

Whitgift School

King's College Wimbledon

Emanuel School

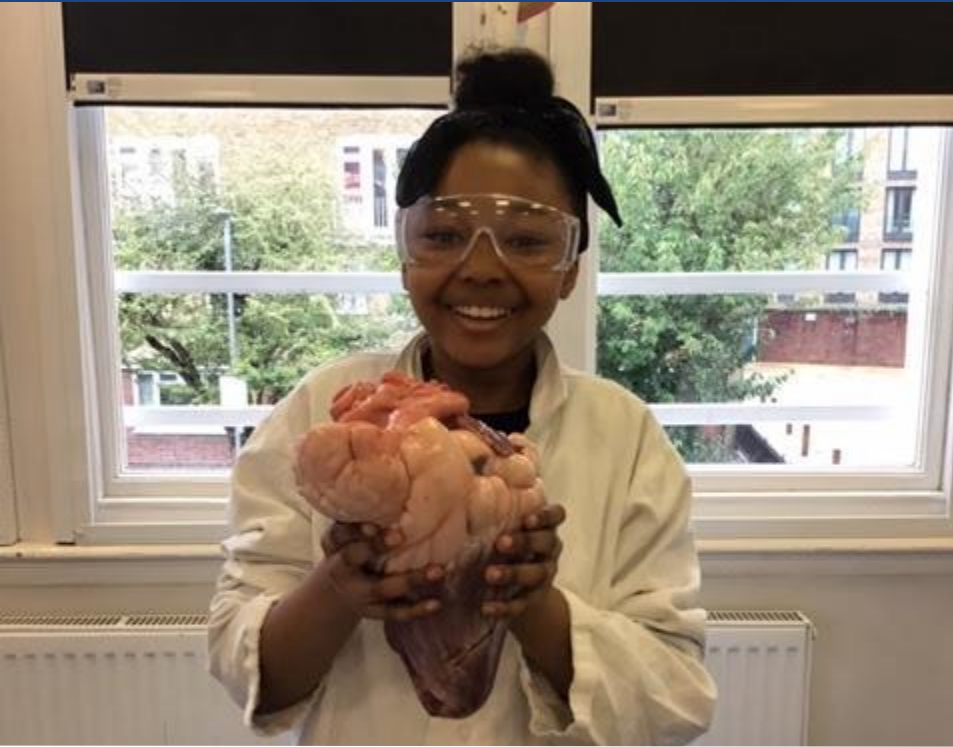
City of London School for Girls

Latymer Upper School

- Assistance with 11+ registration fees and references if required
- Pathway pupils school applications to date: Latymer Upper, Emanuel, Alleyn's, St Paul's, Kingston Grammar, Royal Russell, Whitgift



Pathway - Teaching and Learning



Teaching and learning is enquiry based with the emphasis on discussion and investigation. It extends and complements their primary school work within a stimulating peer group.

Pathway - Two Days in July



Consecutive days during which we focused on a theme: the 50th anniversary of the first Moon landing. The children explored the topic through personal research, Ted Hughes' poetry, watercolour painting, drama, music and film making.

Pathway - Moon Exploration

The children were challenged to build an Eagle Landing Craft during Maths and Science from different materials. The Head of Science dropped the crafts from building roof to great excitement

There was a trick!

....each rocket housed a raw egg. Seven out of nine eggs survived the journey.

Physics in action!



Extracting sodium chloride from 'moon rocks' (rock salt)



A balloon version of the Eagle

Pathway - Looking Ahead

2020: Consolidate

- More pupils
- More 'feeder' schools
- Solidify approach

2021: Extend

- Add second hub, likely Kensington
- Replicate approach

By end of 2021 –
100+ graduates



Thomas's Academy

Miles Chester, Headmaster

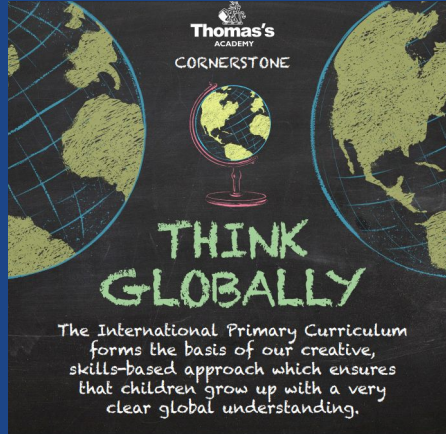
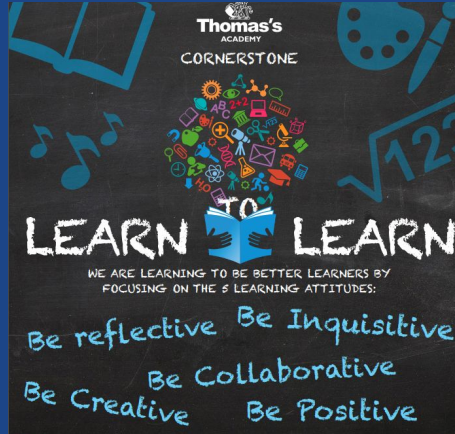
MISSION STATEMENT

To create a vibrant and inclusive school community where all children are provided with a broad, skills-based curriculum, and where they can develop as confident, independent, self-aware and thoughtful learners.



Thomas's Academy

The Four Cornerstones





Next Steps



CAIRN

Educating Children in Rural Nepal

Anne Griffith, Nepal Programme Director



CAIRN EDUCATIONAL AWARDS

SUPPORTING THE MOST DISADVANTAGED PUPILS

- Supporting more than 600 children every year
- Providing essential educational supplies, uniform and school fees
- Social welfare support and basic medical care for pupils and their families



**CAIRN
LIBRARIES**

SUPPORTING LITERACY FOR THE WHOLE COMMUNITY

- Constructed and/or installed more than 50 libraries with trained librarians
- Placing over 100,000 books into the hands of children and their village communities





CAIRN TEACHER TRAINING

TRAINING TEACHERS AND TRANSFORMING CLASSROOMS

- Delivering quality teacher training
140 teachers across 19 schools
have received training
- 108 classrooms have been
renovated and equipped to
improve teaching and learning



Finances & Fundraising

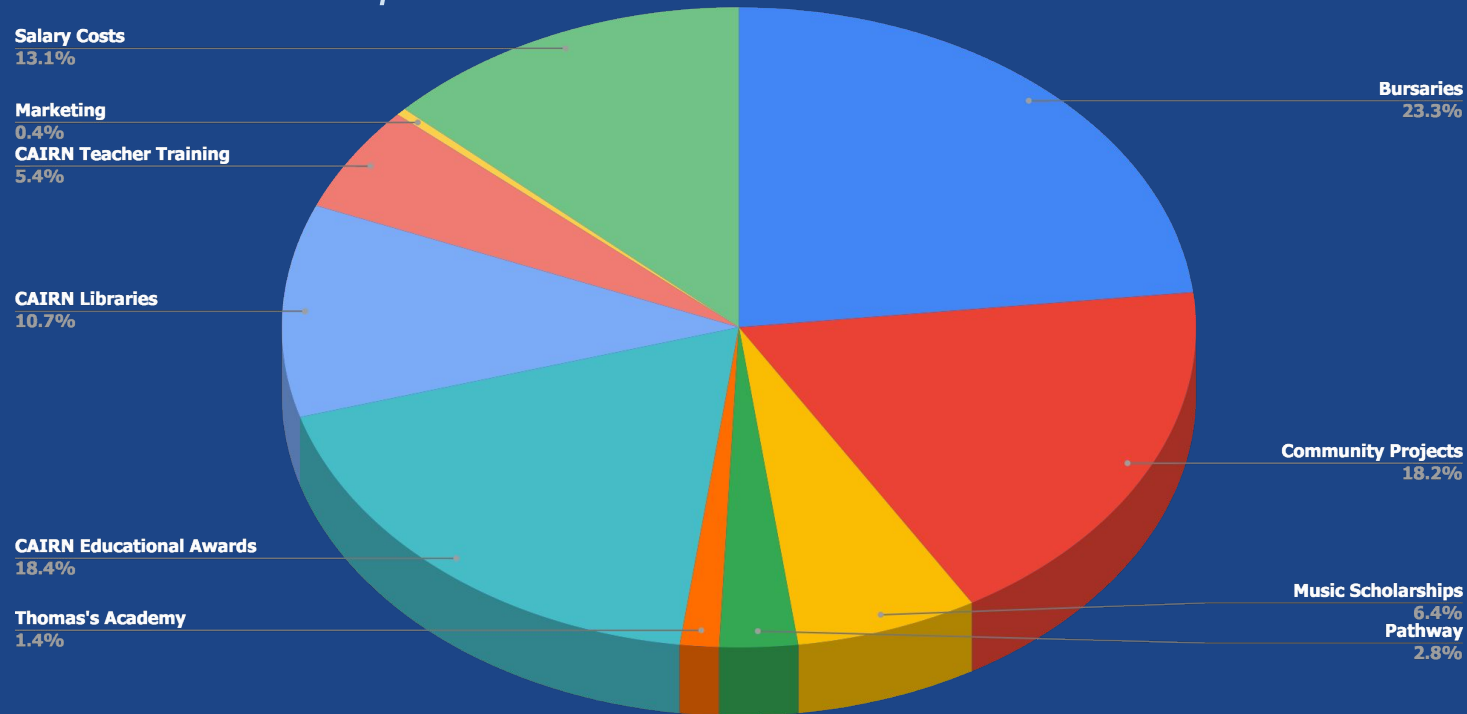
Liz Woodcock, Executive Director

Funds Transferred to Thomas's Foundation

Thomas's Schools Foundation	£483,735
Thomas's Academy (individual restricted gift)	£40,000
CAIRN	£354,205
Total Funds	£877,940

All funds transferred are ring-fenced to the cause for which they were raised

TF Committed Expenditure 2019/20 - Total £652,740



Funding Goal for Budgeted Expenditure 2020/21

with Programme Expansion

£1,000,000

Foundation Bursaries

Target 2020/21 - £330,000

£180,000 to provide 10 Bursaries, with additional fundraising for reserves as we prepare to expand the Bursary Programme from Years 7 and 8 - Year 13



Community Partnerships

Target 2020/21- £200,000

£200,000 to increase support for local projects in education, arts, drama, music and sport in our local boroughs, including music scholarships and the Pathway Programme.



CAIRN

Target 2020/21 - £400,000

- To increase the number of pupils receiving Educational Awards from 634 to up to 1000
- Supply up to 1800 pupils with educational supplies
- Install & resource 10 libraries
- Provide quality teacher training in up to 12 schools



Thomas's Academy

Target 2020/21 - £70,000

£70,000 to build an in-house inclusion team to support the educational & emotional needs of the Academy's most vulnerable pupils.



Fundraising & Finance - 2020/25

The 5 Year Strategy

Community Partnerships

To continue funding projects for over 1000 children in the community across more than 40 organisations, deepening the strength of the partnerships and impact

- An increase in funding from £9,000 - £25,000pa will allow TF to expand the incredible Pathway programme



Fundraising & Finance - 2020/25

The 5 Year Strategy

Volunteers

To build on the support of the invaluable community of volunteers and ambassadors working within Thomas's Foundation and Thomas's Schools.

Fundraising & Finance - 2020/25

The 5 Year Strategy

Thomas's Academy

To raise funds of up to £180,000 to fully support special educational needs for the most vulnerable pupils through the provision of a SEN teacher and additional teaching assistants and increase opportunities for outdoor learning



Fundraising & Finance - 2020/25

The 5 Year Strategy

CAIRN

- £200,000 - To expand its quality teaching training programme, nationally in partnership with The Gurkha Welfare Trust and local NGOs, expert in their field
- £200,000 - For over 1000 children to receive educational awards to attend school and a further 1800 to receive educational supplies
- £100,000 - To commit to install 10 libraries every year



Fundraising & Finance - 2020/25

The 5 Year Strategy

Bursaries

To increase Bursary provision beyond Years 7 and 8 through to Year 13 with the arrival of Thomas's Senior School

- To fund 1 child from Years 7 - 13 £200,000
- To fund 10 children from Years 7 - 13 £2,000,000

Making it Happen

- Community Fundraising and Collaboration

PTA, Pupils, Parents, TLDS Staff, Volunteers
Gifts in Kind
Living out the Values

- Individual Programme Focussed Events
- Develop a Major Gifts Programme
- Alumni Programme



Thank you!

lwoodcock@thomassfoundation.org.uk

bthomas@thomassfoundation.org.uk

info@thomassfoundation.org.uk

www.thomassfoundation.org.uk