

ActivPanel Non-Adjustable Mobile Stand

INTERACTIVE FLAT PANEL STAND OPTION

PRODUCT SPECIFICATIONS

The ActivPanel Non-Adjustable Mobile Stand will fit perfectly in any classroom. The robust, cost-effective mobile stand features sturdy casters and locking guards for enhanced stability, and convenient shelving for storing devices.

Non-Adjustable Mobile Stand Specifications

Compatible with ActivPanel 70", 75", 86" and ActivPanel i-Series 65", 75"



PHYSICAL SPECIFICATIONS

Non-Adjustable Mobile Stand for 70" & 75" and 86" Sizes

Product Dimensions	1300 x 1805 x 950 mm (51 x 71 x 37 in)
Packed Dimensions	Box 1 of 2 (Frame): 1545 x 430 x 120 mm (61 x 17 x 5 in) Box 2 of 2 (Base): 1370 x 825 x 205 mm (54 x 32 x 8 in)
Net Weight	Frame: 23.8 kg (52.5 lbs) Base: 33.4 kg (73.6 lbs)
Packed Weight	Box 1 of 2 (Frame): 26.5 kg (58.4 lbs) Box 2 of 2 (Base): 38.2 kg (84.2 lbs)

PACKED CONTENTS

What's in the Box	Box 1 of 2: Frame, horizontal brace, vertical blades, screw kit, installation guide Box 2 of 2: Base, shelf
-------------------	--

WARRANTY

For Promethean Warranty Terms and Conditions, please visit PrometheanWorld.com/ActivCare.

INSTALLATION

The installation of this product should be completed by a qualified installer. Use of components not supplied by Promethean or not meeting minimum specifications may impact performance, safety and warranty. For more information, visit Support.PrometheanWorld.com.

COMPLIANCE & CERTIFICATION

Regulatory Certification	CE, CB, UL, CUL
--------------------------	-----------------

SUPPORT

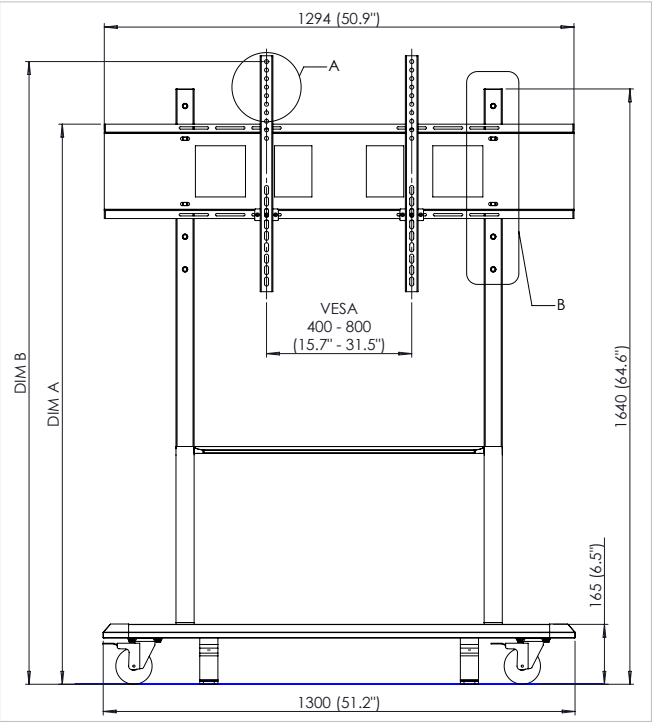
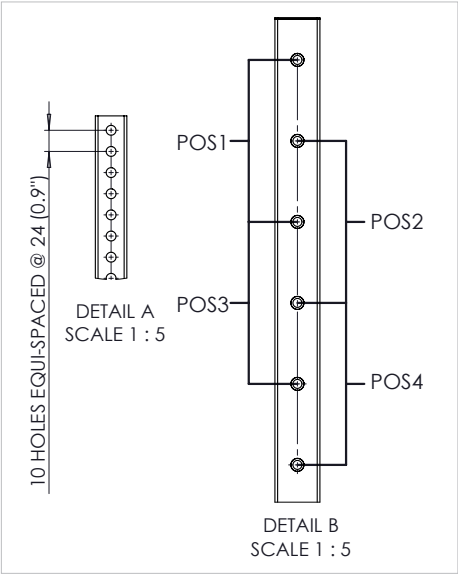
For all Promethean products, visit Support.PrometheanWorld.com.

TECHNICAL DRAWINGS

Non-Adjustable Mobile Stand for 70", 75" and 86" Sizes

REF	DESCRIPTION	POS 1 (HOLES 1&3)	POS 2 (HOLES 2&4)	POS 3 (HOLES 3&5)	POS 4 (HOLES 4&6)
A	FLOOR TO TOP OF HORIZONTAL BRACE	1633mm (64.3")	1543mm (60.7")	1453mm (57.2")	1363mm (53.7")
B	FLOOR TO TOP HOLE IN VERTICAL BLADE	1805mm (71.1")	1715mm (67.5")	1625mm (64.0")	1535mm (60.4")

Back



Side

