



Model RD9H-5/8 Extruder Rupture Disk with 5/8 - 11NC Mounting Thread

Product Introduction:

ONEhalf20's Model RD9H-5/8 Extruder Rupture Disk is designed for emergency relief of excess pressure in plastics processing machinery. It is designed to instantaneously rupture at a predetermined pressure. The Model RD9H-5/8 Extruder Rupture Disk is available in a variety of burst pressures.

The Model RD9H-5/8 may be specified for primary relief in applications where pressure build-up can occur so rapidly that the response time of a relief valve is inadequate.

Features & Benefits

- burst pressures from 1,500 to 15,000 psi
- 5/8 - 11NC mounting thread
- SS or Inconel disk
- suitable for melt temperatures up to 825°F
- burst pressure accuracy +/- 5%
- low installation and maintenance cost
- all stainless steel body

Model RD9H-5/8 Photo



Ordering Guide

| <u>Model Number</u> | <u>Length & Installation</u> |
|---------------------|----------------------------------|
| RD9H-5/8 | 9.0" with hex head |

Standard Rated Burst Pressures

| | |
|--------|------------|
| -1.5M | 1,500 psi |
| -2.5M | 2,500 psi |
| -3.5M | 3,500 psi |
| -4.5M | 4,500 psi |
| -5.5M | 5,500 psi |
| -6.5M | 6,500 psi |
| -7.5M | 7,500 psi |
| -8.5M | 8,500 psi |
| -9.5M | 9,500 psi |
| -10.5M | 10,500 psi |
| -12.5M | 12,500 psi |
| -15M | 15,000 psi |

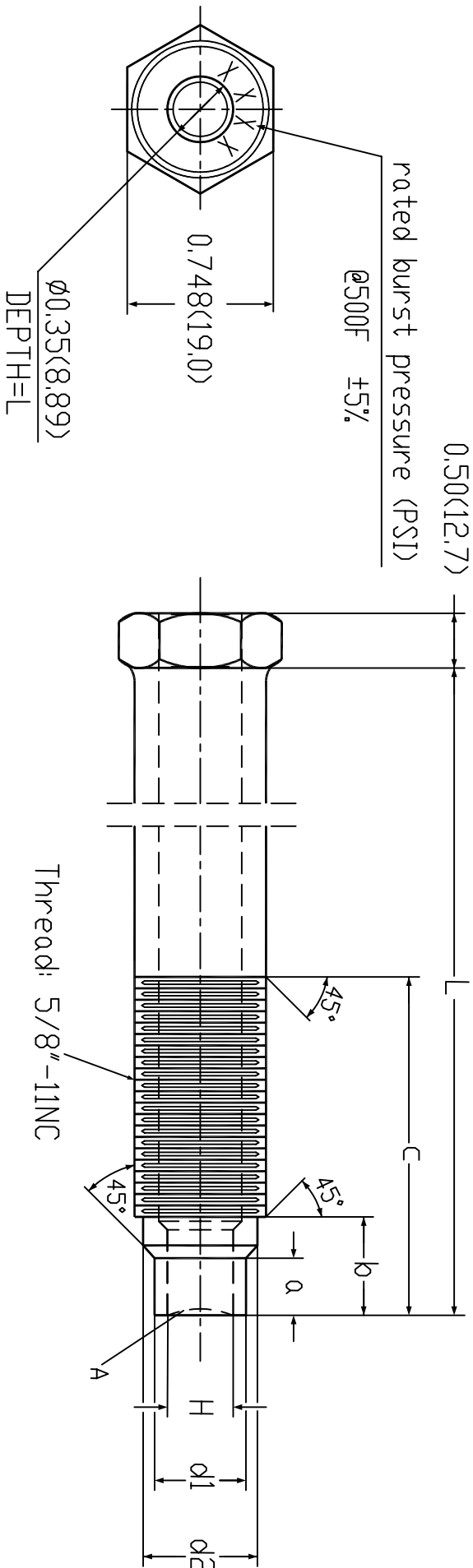
Note:

For burst pressures not listed please consult your **ONEhalf20** distributor..

North America Toll Free 877 781-1881
Other Locations 416 781-1881
www.onehalf20.com



RD9H-XM-5/8
Dimensional Drawing Inches(mm)



| a | b | c | L |
|-------------|--------------|-------------|-------------|
| 0.238(6.05) | 0.554(14.07) | 2.75(69.85) | 9.00(228.6) |

| H | Ø1 | Ø2 |
|-------------|-------------|--------------|
| 3/16"(4.78) | 0.354(8.99) | 0.488(12.40) |

