



Model RD4H-3/4 Extruder Rupture Disk with 3/4 - 16 UNF Mounting Thread

Product Introduction

ONEhalf20's Model RD4H-3/4 Extruder Rupture Disk is designed for emergency relief of excess pressure in plastics processing machinery. It is designed to instantaneously rupture at a predetermined pressure. The Model RD4H-3/4 Extruder Rupture Disk is available in a variety of burst pressures.

The Model RD4H-3/4 may be specified for primary relief in applications where pressure build-up can occur so rapidly that the response time of a relief valve is inadequate.

Features & Benefits

- burst pressures from 1,500 to 9,500 psi
- 3/4 x 16 UNF mounting thread
- SS or Inconel disk
- suitable for melt temperatures up to 825°F
- burst pressure accuracy +/- 5%
- low installation and maintenance cost
- all stainless steel body

Model RD4H-3/4 Photo



Ordering Guide

<u>Model Number</u>	<u>Length & Installation</u>
---------------------	----------------------------------

RD4H-3/4	4.0" with hex head
----------	--------------------

<u>Standard Rated Burst Pressures</u>	
---------------------------------------	--

-1.5M	1,500 psi
-2.5M	2,500 psi
-3.5M	3,500 psi
-4.5M	4,500 psi
-5M	5,000 psi
-7.5M	7,500 psi
-8.5M	8,500 psi
-9M	9,000 psi
-9.5M	9,500 psi

<u>Option</u>	<u>Description</u>
---------------	--------------------

-1/2NPT	1/2" NPT discharge connection
---------	-------------------------------

Model RD4H-3/4 With 1/2 NPT Photo



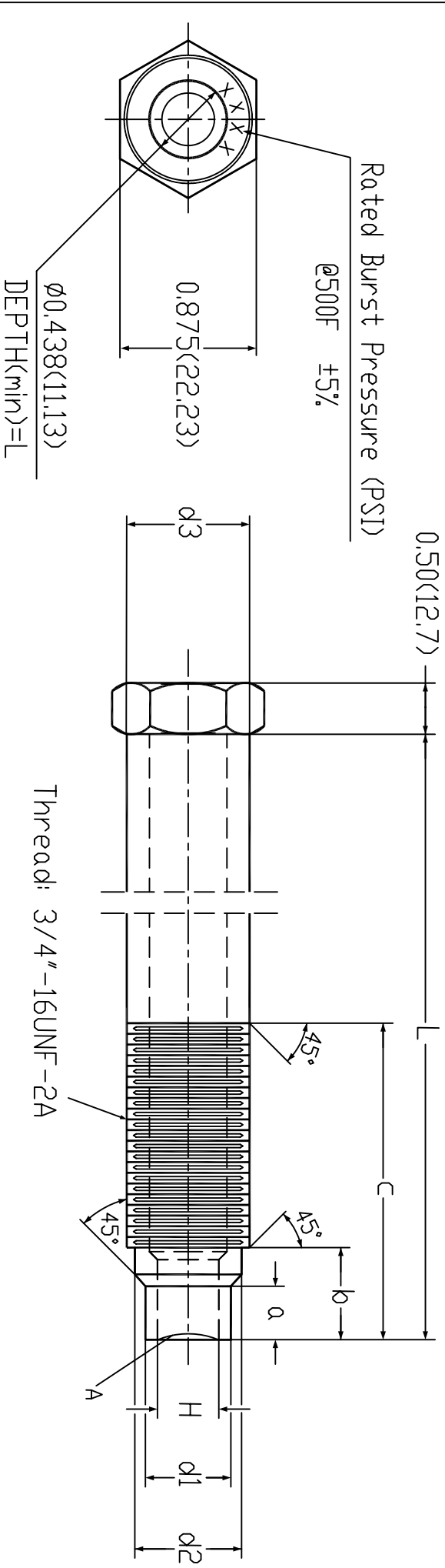
Note:

For burst pressures not listed please consult your **ONEhalf20** distributor.

North America Toll Free 877 781-1881
Other Locations 416 781-1881
www.onehalf20.com

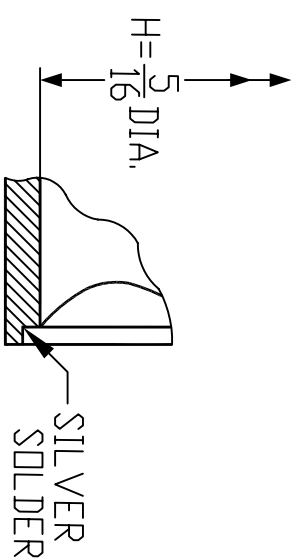


RD4H-XM-3/4
Dimensional Drawing Inches(mm)



a	b	c	L
0.312(7.93) 0.300(7.62)	0.545(13.84)	2.70(68.58)	4.00(101.6)

H	d1	d2	d3
5/16"(7.95)	0.500(12.70) 0.495(12.57)	0.665(16.89) 0.655(16.64)	0.75(19.05)

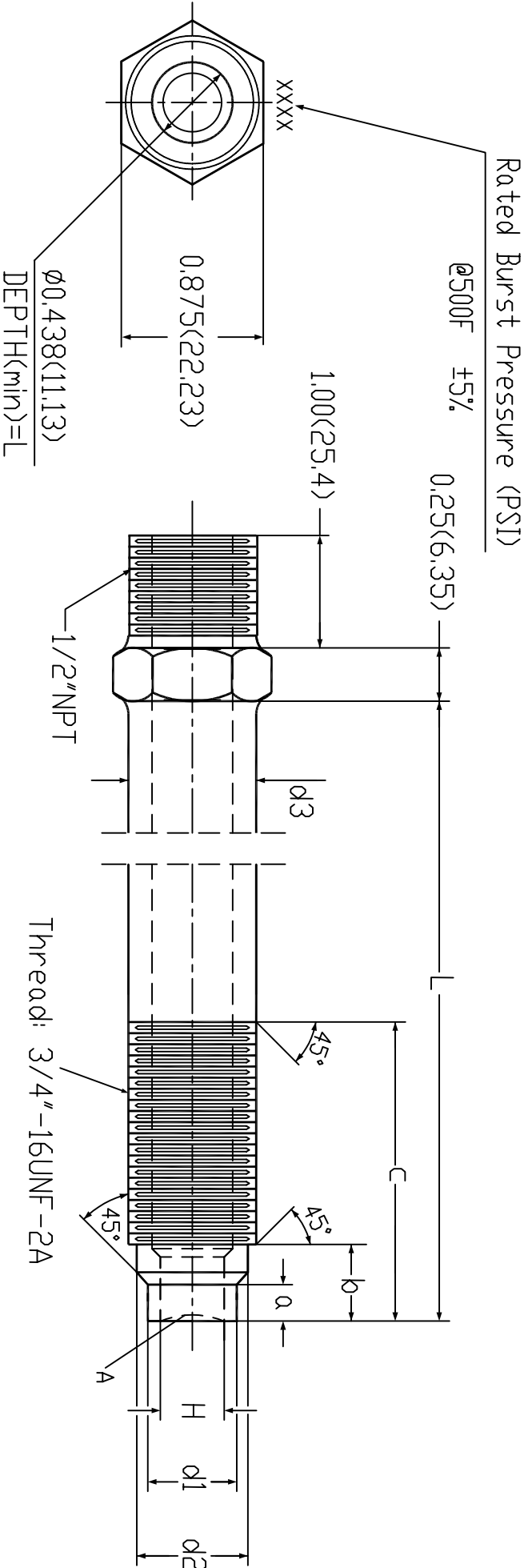


DETAIL A

DATE: May/2009 V1.1

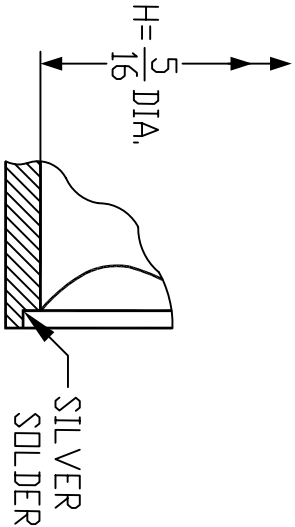


RD4H-XM-3/4-1/2NPT
Dimensional Drawing Inches(mm)



a	b	c	L
0.312(7.93) 0.300(7.62)	0.545(13.84)	2.70(68.58)	4.00(101.6)

H	$\varnothing 1$	$\varnothing 2$	$\varnothing 3$
5/16"(7.95)	$\varnothing 0.500(12.70)$ $\varnothing 0.495(12.57)$	$\varnothing 0.665(16.89)$ $\varnothing 0.655(16.64)$	$\varnothing 0.75(19.05)$



DATE: May/2009 V2.2