



SPRING/Summer 2020

DNA
design news
ACCESSORIES



Letter from the Editor

How Do I Want to Dress this Season?

Will I continue to explore my empowerment and present myself in a pulled together and confident way? Classic neutral colors designed into versatile separates in refined wools, crisp cotton and glazed leather. Right sized hand-held satchels with discreet hardware and chain details. Square shaped buckles are evident in belting and prints include geometrics, stripes and dots.

Will I embrace my casual persona? Cozy to wear items, military-inspired jackets, roomy trousers with cargo detailing and throw on trench coats. Warm neutral tones combined with sunny brights work with refined geometrics and classical stripes. Handbags highlight pocket details, zipper and snap details. Small organizational pieces are paired with updated totes and shoulder bags. Belting takes on a whole new look with functional details such as pouches and hanging pockets along with performance webs in nylon with novelty buckle closures.

Will I give into my wanderlust? The Amalfi Coast, surfing in Hawaii? Maybe a jaunt to the jungle or a garden show? A riot of flowers, tie dye prints, lush vegetation and fabulous florals are the prints for this travelogue. Accessories that highlight this lifestyle include handbags with details including mesh, appliques, embroidery and multi pockets for travel ease. Belt bags move into a core product and cargo belts, rope trim and logo buckles all support this trek.

Will I reset and refresh this season? Lighten up with eyelets, tonal embroidery, pretty pastels and the whitest of whites? Include details such as subdued ruffles, refined embroidery and hand-woven details? Belting that works with these looks include jellies, rope and straw details as well as perforations, floral embosses and scalloping.

Will I look back to the 70s? Tie dye and butterfly prints join colorful florals and preppy stripes. Classically shaped totes, hobo shapes, small crossbody bags reappear and belts with logo buckles. Preppy fashion details, wide braids and belts with braided trim will all be important.

However I choose to dress will be my choice!

Evening Spring and Summer 2020

As award show ceremonies have shown us, evening wear looks have never been so diversified or exuberant. Color-as in most all fashion categories in driving business and evening wear is not different. Although classic and elegant black continues to be the bestselling color in evening bags, look for newness in emerging jewel colors of amethyst and marigold and tropical colors including watermelon and lemon. Lilac appears as a new pastel choice and aforementioned black is with white or with pastels.

'Evening Prairie' looks pair romantic floral prints with ruffles. 'Over the Top' addresses wild animal prints and fantasy embellishment, and 'High Society' showcases classic details like bows, pleating and discreet jewelry trims.

So many choices for the night on the town!

John Maloney

John Maloney, Creative Director

DNA



MAX MARA



MICHAEL KORS



GIORGIO ARMANI



TOD'S



JIL SANDER



ACNE STUDIOS



TORY BURCH



MONDAY SWIMWEAR



MIU MIU

EMPOWERMENT

EMPOWERMENT



JOSEPH



CREATURES OF COMFORT



HERMÈS



MANSUR GAVRIEL



MAX MARA



ROCHAS



BURBERRY



HERMÈS



SALVATORE FERRAGAMO



JUST CAVALLI



MARYAM NASSIR ZADEH



FENDI



MONDAY SWIMWEAR

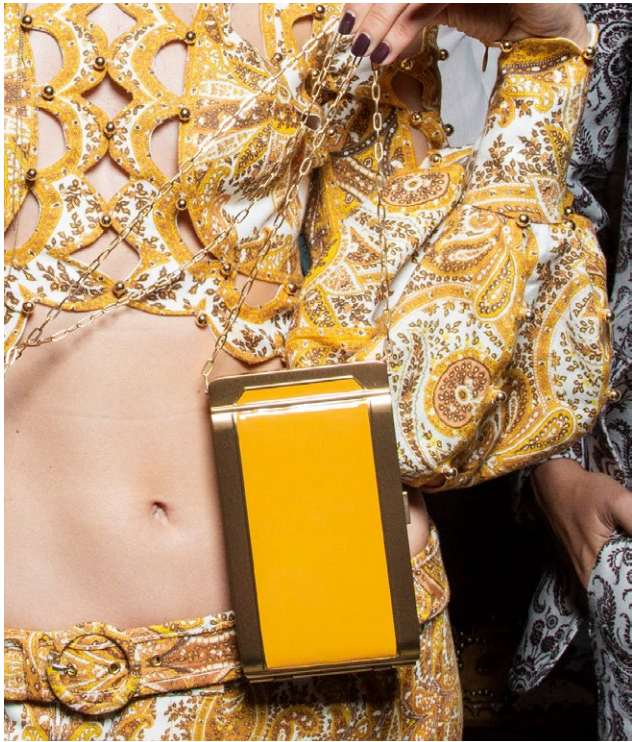


MICHAEL KORS



FENDI

EMPOWERMENT BELTS



ZIMMERMANN



THEORY



JIL SANDER



ERMANNO SCERVINO



BURBERRY

EMPOWERMENT EVENING

MARC JACOBS



FENDI



ROKSANDA



GABRIELA HEARST



STELLA MCCARTNEY



ANTEPRIMA



HERMÈS



GIVENCHY



DION LEE



JOSEPH



FENDI



TOD'S



CALVIN KLEIN



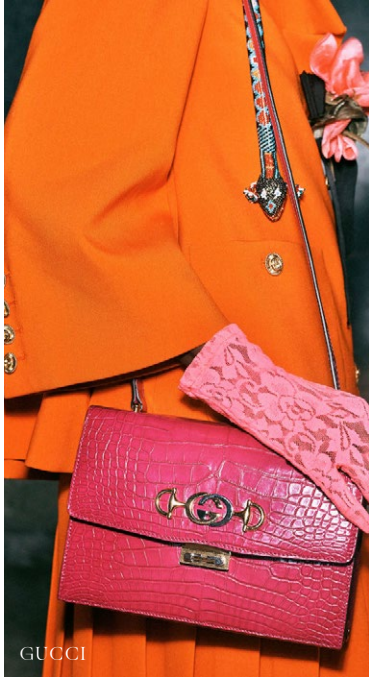
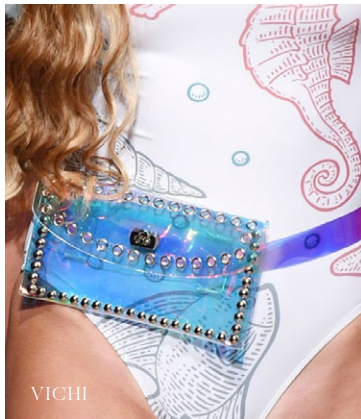
BURBERRY

EMPOWERMENT HANDBAGS



RETRO REVIVAL

RETRO REVIVAL





VERSACE



ELISABETTA FRANCHI



ESCADA



VERONICA BEARD



TAORAY WANG



BLUE MARINE



GABRIELE COLANGELO



OFF-WHITE



JILL STUART

RETRO REVIVAL

BELTS

KATE SPADE



BLUMARINE



GIORGIO ARMANI



GENNY



AREA



RETRO REVIVAL

EVENING



GIORGIO ARMANI



EMPORIO ARMANI



VERSACE



ANTEPRIMA



Y PROJECT



PRADA



KATE SPADE



BALENCIAGA



LONGCHAMP



VERSACE



PHILLIP LIM



MICHAEL KORS



EMILIO PUCCI



CHRISTIAN SIRIANO

RETRO REVIVAL HANDBAGS



WANDERLUST

WANDERLUST





ALTUZARRA



LILLY SARTI



JUNKO SHIMADA



TOD'S



PHILOSOPHY DI LORENZO SERAFINI



ROKSANDA



PRELU



Y/PROJECT



MARCO DE VINCENZO

WANDERLUST BELTS

LOUIS VUITTON



CHANEL



RIXO



OSCAR DE LA RENTA



ALICE OLIVIA

WANDERLUST EVENING



LUISA BECCARIA



BADGLEY MISCHKA



STELLA MCCARTNEY



GIORGIO ARMANI



MICHAEL KORS



MICHAEL KORS



JAMIE WEI HUANG



MICHAEL KORS



PORTS



LOEWE



CLAUDIA LI



BOSS



JACQUEMUS



EUDON CHOI

WANDERLUST HANDBAGS

