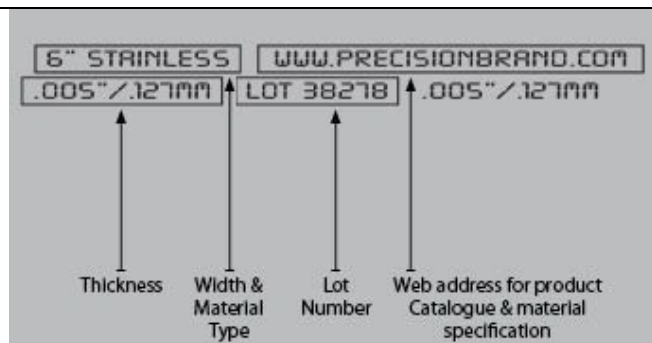


Precision Brand Brass Shim Stock

Page 1 of 12



Precision Brand Brass shim is a cold rolled half hard 70% copper, 30% zinc alloy material. Because of its accurate thickness and temper, it is universally used for shimming applications in explosive atmospheres and where corrosion problems exist. Due to its excellent forming quality, it may be lightly drawn, blanked or stamped and is used extensively in metal sculpture.



Continuous Marking along length of Shim Roll:

Manufacturers Website
Shim Width
Shim Material
Shim Thickness
Traceable Lot Number

Accuracy Specifications:

Material and Mechanical Properties:

Inch

| Thickness inch | Tolerance 6" Width | Tolerance 12" Width |
|-------------------|-----------------------|------------------------|
| 0.001 – 0.003 | ± 10% | ± 10% |
| 0.004 | ± 0.0003 | ± 0.0006 |
| 0.005 – 0.006 | ± 0.0004 | ± 0.0008 |
| 0.007 – 0.009 | ± 0.0006 | ± 0.0010 |
| 0.010 – 0.013 | ± 0.0008 | ± 0.0013 |
| 0.014 – 0.017 | ± 0.0010 | ± 0.0015 |
| 0.018 – 0.021 | ± 0.0013 | ± 0.0018 |
| 0.022 – 0.031 | ± 0.002 | ± 0.002 |

Metric

| Thickness mm | Tolerance mm |
|--------------|--------------|
| 0.05 | ± 0.006 |
| 0.10 | ± 0.010 |
| 0.15 | ± 0.013 |
| 0.20 | ± 0.019 |
| 0.25 | ± 0.025 |
| 0.30 | ± 0.026 |
| 0.40 & 0.50 | ± 0.045 |
| 0.65 & 0.80 | ± 0.066 |

| | |
|----------------------|--|
| Material | Brass CDA 260 alloy |
| Copper | 68.5 – 71.5 |
| Iron | 0.050 Max. |
| Lead | 0.050 Max. |
| Zinc | Balance |
| Temper | Half Hard 2 B&S Numbers hard |
| Hardness | Rockwell 30T 56 – 68 (Approx) |
| Tensile Strength | 57,000 – 67,000 PSI |
| Elongation | 18 – 42% in 2" |
| Meets Specifications | SAE-CA-260 CDA-260 ASTM-B19, B36 |

Precision Brand Brass Shim Stock

Page 2 of 12

Metric Shim Rolls: 150mm wide

| Code | Thickness mm | Thickness inch | Box Qty | Included in Assortment Pack | Width mm | Length | Weight kilos | Weight lbs |
|------------|-----------------|-------------------|------------|--------------------------------|-------------|--------|-----------------|---------------|
| 77-517-971 | 0.05mm | | 1 | Yes | 150mm | 2.5mtr | 0.19 | 0.42 |
| 77-517-972 | 0.10mm | | 1 | Yes | 150mm | 2.5mtr | 0.33 | 0.72 |
| 77-517-973 | 0.15mm | | 1 | Yes | 150mm | 2.5mtr | 0.52 | 1.14 |
| 77-517-974 | 0.20mm | | 1 | Yes | 150mm | 2.5mtr | 0.69 | 1.52 |
| 77-517-975 | 0.25mm | | 1 | Yes | 150mm | 2.5mtr | 0.83 | 1.83 |
| 77-517-976 | 0.30mm | | 1 | Yes | 150mm | 2.5mtr | 1.02 | 2.24 |
| 77-517-977 | 0.40mm | | 1 | Yes | 150mm | 2.5mtr | 1.25 | 2.76 |
| 77-517-978 | 0.50mm | | 1 | Yes | 150mm | 2.5mtr | 1.75 | 3.85 |
| 77-517-979 | 0.65mm | | 1 | Yes | 150mm | 2.5mtr | 2.29 | 5.04 |
| 77-517-980 | 0.80mm | | 1 | Yes | 150mm | 2.5mtr | 2.98 | 6.58 |

Packed Weight and Dimensions

| Code | Thickness mm | W mm | H mm | L mm | Weight kilos | Weight lbs |
|------------|-----------------|------|------|------|--------------|---------------|
| 77-517-971 | 0.05mm | 80 | 80 | 180 | 0.19 | 0.42 |
| 77-517-972 | 0.10mm | 80 | 80 | 180 | 0.33 | 0.72 |
| 77-517-973 | 0.15mm | 80 | 80 | 180 | 0.52 | 1.14 |
| 77-517-974 | 0.20mm | 80 | 80 | 180 | 0.69 | 1.52 |
| 77-517-975 | 0.25mm | 80 | 80 | 180 | 0.83 | 1.83 |
| 77-517-976 | 0.30mm | 80 | 80 | 180 | 1.02 | 2.24 |
| 77-517-977 | 0.40mm | 120 | 120 | 180 | 1.25 | 2.76 |
| 77-517-978 | 0.50mm | 120 | 120 | 180 | 1.75 | 3.85 |
| 77-517-979 | 0.65mm | 210 | 165 | 210 | 2.29 | 5.04 |
| 77-517-980 | 0.80mm | 210 | 165 | 210 | 2.98 | 6.58 |

Metric Shim Assortment Pack: 150mm wide x 300mm long

| Code | Description | Range | No. Of Sheets | Weight kilos |
|------------|------------------------------|-----------------|---------------|--------------|
| 77-517-999 | Brass Assortment Pack Metric | 0.05mm – 0.80mm | 10 | 1.427 |

Packed Weight and Dimensions

| Code | W mm | H mm | L mm | Weight kilos |
|------------|------|------|------|--------------|
| 77-517-999 | 165 | 25 | 470 | 1.427 |

Precision Brand Brass Shim Stock

Page 3 of 12

Inch Shim Rolls: 6" wide

| Code | Thickness inch | Thickness mm | Box Qty | Included in Assortment Pack | Width in | Length in | Weight kilos | Weight lbs |
|------------|-------------------|-----------------|------------|--------------------------------|----------|--------------|-----------------|---------------|
| 77-517-135 | 0.001" | 0.025 | 1 | Yes | 6" | 100" | 0.13 | 0.29 |
| 77-517-160 | 0.0015" | 0.038 | 1 | Yes | 6" | 100" | 0.17 | 0.38 |
| 77-517-195 | 0.002" | 0.051 | 1 | Yes | 6" | 100" | 0.21 | 0.46 |
| 77-517-240 | 0.003" | 0.076 | 1 | Yes | 6" | 100" | 0.29 | 0.64 |
| 77-517-265 | 0.004" | 0.102 | 1 | Yes | 6" | 100" | 0.37 | 0.82 |
| 77-517-305 | 0.005" | 0.127 | 1 | Yes | 6" | 100" | 0.47 | 1.03 |
| 77-517-330 | 0.006" | 0.152 | 1 | Yes | 6" | 100" | 0.55 | 1.21 |
| 77-517-355 | 0.007" | 0.178 | 1 | Yes | 6" | 100" | 0.66 | 1.45 |
| 77-517-370 | 0.008" | 0.203 | 1 | Yes | 6" | 100" | 0.71 | 1.57 |
| 77-517-390 | 0.009" | 0.229 | 1 | | 6" | 100" | 0.87 | 1.78 |
| 77-517-415 | 0.010" | 0.254 | 1 | Yes | 6" | 100" | 0.89 | 1.96 |
| 77-517-445 | 0.012" | 0.305 | 1 | Yes | 6" | 100" | 1.11 | 2.44 |
| 77-517-475 | 0.015" | 0.381 | 1 | Yes | 6" | 100" | 1.40 | 3.08 |
| 77-517-477 | 0.018 | 0.457 | 1 | | 6" | 100" | 1.63 | 3.60 |
| 77-517-495 | 0.020" | 0.508 | 1 | | 6" | 100" | 1.66 | 3.67 |
| 77-517-515 | 0.025" | 0.635 | 1 | | 6" | 100" | 2.30 | 5.08 |
| 77-517-535 | 0.031" | 0.787 | 1 | | 6" | 100" | 2.78 | 6.13 |

Packed Weight and Dimensions

| Code | Thickness inch | Thickness mm | W mm | H mm | L mm | Weight kilos | Weight lbs |
|------------|-------------------|-----------------|------|------|------|-----------------|---------------|
| 77-517-135 | 0.001" | 0.025 | 80 | 80 | 180 | 0.13 | 0.29 |
| 77-517-160 | 0.0015" | 0.038 | 80 | 80 | 180 | 0.17 | 0.38 |
| 77-517-195 | 0.002" | 0.051 | 80 | 80 | 180 | 0.21 | 0.46 |
| 77-517-240 | 0.003" | 0.076 | 80 | 80 | 180 | 0.29 | 0.64 |
| 77-517-265 | 0.004" | 0.102 | 80 | 80 | 180 | 0.37 | 0.82 |
| 77-517-305 | 0.005" | 0.127 | 80 | 80 | 180 | 0.47 | 1.03 |
| 77-517-330 | 0.006" | 0.152 | 80 | 80 | 180 | 0.55 | 1.21 |
| 77-517-355 | 0.007" | 0.178 | 80 | 80 | 180 | 0.66 | 1.45 |
| 77-517-370 | 0.008" | 0.203 | 80 | 80 | 180 | 0.71 | 1.57 |
| 77-517-390 | 0.009" | 0.229 | 80 | 80 | 180 | 0.87 | 1.78 |
| 77-517-415 | 0.010" | 0.254 | 80 | 80 | 180 | 0.89 | 1.96 |
| 77-517-445 | 0.012" | 0.305 | 80 | 80 | 180 | 1.11 | 2.44 |
| 77-517-475 | 0.015" | 0.381 | 120 | 120 | 180 | 1.40 | 3.08 |
| 77-517-477 | 0.018 | 0.457 | 120 | 120 | 180 | 1.63 | 3.60 |
| 77-517-495 | 0.020" | 0.508 | 120 | 120 | 180 | 1.66 | 3.67 |
| 77-517-515 | 0.025" | 0.635 | 210 | 165 | 210 | 2.30 | 5.08 |
| 77-517-535 | 0.031" | 0.787 | 210 | 165 | 210 | 2.78 | 6.13 |

Inch Shim Assortment Pack: 6" wide x 12" long

| Code | Description | Range | No. Of Sheets | Weight kilos |
|------------|----------------------------|-----------------|---------------|--------------|
| 77-517-545 | Brass Assortment Pack Inch | 0.001" – 0.015" | 12 | 0.845 |

Packed Weight and Dimensions

| Code | W mm | H mm | L mm | Weight kilos |
|------------|------|------|------|--------------|
| 77-517-545 | 165 | 25 | 320 | 0.845 |

Precision Brand Brass Shim Stock

Inch Shim Rolls: 12" wide

| Code | Thickness Inch | Thickness mm | Box Qty | Width in | Length in | Weight kilos | Weight lbs |
|------------|-------------------|-----------------|------------|----------|--------------|-----------------|---------------|
| 77-517-145 | 0.001" | 0.025 | 1 | 12" | 120" | 0.41 | 0.90 |
| 77-517-205 | 0.002" | 0.051 | 1 | 12" | 120" | 0.54 | 1.18 |
| 77-517-250 | 0.003" | 0.076 | 1 | 12" | 120" | 0.71 | 1.56 |
| 77-517-275 | 0.004" | 0.102 | 1 | 12" | 120" | 0.93 | 2.05 |
| 77-517-315 | 0.005" | 0.127 | 1 | 12" | 120" | 1.12 | 2.46 |
| 77-517-340 | 0.006" | 0.152 | 1 | 12" | 120" | 1.32 | 2.90 |
| 77-517-380 | 0.008" | 0.203 | 1 | 12" | 120" | 1.78 | 3.93 |
| 77-517-425 | 0.010" | 0.254 | 1 | 12" | 120" | 2.20 | 4.85 |
| 77-517-426 | 0.012" | 0.305 | 1 | 12" | 120" | 2.63 | 5.80 |
| 77-517-427 | 0.015" | 0.381 | 1 | 12" | 120" | 3.21 | 7.08 |
| 77-517-428 | 0.020 | 0.508 | 1 | 12" | 120" | 4.46 | 9.83 |

Packed Weight and Dimensions

| Code | Thickness Inch | W mm | H mm | L mm | Weight kilos | Weight lbs |
|------------|-------------------|------|------|------|-----------------|---------------|
| 77-517-145 | 0.001" | 105 | 105 | 330 | 0.41 | 0.90 |
| 77-517-205 | 0.002" | 105 | 105 | 330 | 0.54 | 1.18 |
| 77-517-250 | 0.003" | 105 | 105 | 330 | 0.71 | 1.56 |
| 77-517-275 | 0.004" | 105 | 105 | 330 | 0.93 | 2.05 |
| 77-517-315 | 0.005" | 105 | 105 | 330 | 1.12 | 2.46 |
| 77-517-340 | 0.006" | 105 | 105 | 330 | 1.32 | 2.90 |
| 77-517-380 | 0.008" | 165 | 165 | 330 | 1.78 | 3.93 |
| 77-517-425 | 0.010" | 165 | 165 | 330 | 2.20 | 4.85 |
| 77-517-426 | 0.012" | 165 | 165 | 330 | 2.63 | 5.80 |
| 77-517-427 | 0.015" | 165 | 165 | 330 | 3.21 | 7.08 |
| 77-517-428 | 0.020 | 165 | 165 | 330 | 4.46 | 9.83 |

Precision Brand Brass Shim Stock

Inch Shim Sheets: 6" wide x 18" long

| Code | Thickness Inch | Thickness mm | Box Qty | Width in | Length in | Weight kilos | Weight lbs |
|------------|-------------------|-----------------|------------|----------|--------------|-----------------|---------------|
| 77-517-810 | 0.001" | 0.025 | 10 | 6" | 18" | 0.29 | 0.63 |
| 77-517-815 | 0.0015" | 0.038 | 10 | 6" | 18" | 0.35 | 0.78 |
| 77-517-820 | 0.002" | 0.051 | 10 | 6" | 18" | 0.51 | 1.13 |
| 77-517-830 | 0.003" | 0.076 | 10 | 6" | 18" | 0.56 | 1.23 |
| 77-517-840 | 0.004" | 0.102 | 10 | 6" | 18" | 0.88 | 1.94 |
| 77-517-845 | 0.005" | 0.127 | 10 | 6" | 18" | 0.91 | 2.00 |
| 77-517-850 | 0.006" | 0.152 | 10 | 6" | 18" | 1.01 | 2.25 |
| 77-517-855 | 0.007" | 0.178 | 10 | 6" | 18" | 1.19 | 2.63 |
| 77-517-860 | 0.008" | 0.203 | 10 | 6" | 18" | 1.32 | 2.91 |
| 77-517-865 | 0.009" | 0.229 | 10 | 6" | 18" | 1.35 | 2.98 |
| 77-517-870 | 0.010" | 0.254 | 10 | 6" | 18" | 1.65 | 3.63 |
| 77-517-875 | 0.012" | 0.305 | 10 | 6" | 18" | 1.95 | 4.25 |
| 77-517-885 | 0.015" | 0.381 | 10 | 6" | 18" | 2.47 | 5.44 |
| 77-517-900 | 0.020" | 0.508 | 10 | 6" | 18" | 3.18 | 7.00 |
| 77-517-910 | 0.025 | 0.635 | 10 | 6" | 18" | 3.94 | 8.69 |
| 77-517-915 | 0.031 | 0.787 | 10 | 6" | 18" | 4.82 | 10.63 |

Packed Weight and Dimensions

| Code | Thickness Inch | W mm | H mm | L mm | Weight kilos | Weight lbs |
|------------|-------------------|------|------|------|-----------------|---------------|
| 77-517-810 | 0.001" | 165 | 25 | 470 | 0.29 | 0.63 |
| 77-517-815 | 0.0015" | 165 | 25 | 470 | 0.35 | 0.78 |
| 77-517-820 | 0.002" | 165 | 25 | 470 | 0.51 | 1.13 |
| 77-517-830 | 0.003" | 165 | 25 | 470 | 0.56 | 1.23 |
| 77-517-840 | 0.004" | 165 | 25 | 470 | 0.88 | 1.94 |
| 77-517-845 | 0.005" | 165 | 25 | 470 | 0.91 | 2.00 |
| 77-517-850 | 0.006" | 165 | 25 | 470 | 1.01 | 2.25 |
| 77-517-855 | 0.007" | 165 | 25 | 470 | 1.19 | 2.63 |
| 77-517-860 | 0.008" | 165 | 25 | 470 | 1.32 | 2.91 |
| 77-517-865 | 0.009" | 165 | 25 | 470 | 1.35 | 2.98 |
| 77-517-870 | 0.010" | 165 | 25 | 470 | 1.65 | 3.63 |
| 77-517-875 | 0.012" | 165 | 25 | 470 | 1.95 | 4.25 |
| 77-517-885 | 0.015" | 165 | 25 | 470 | 2.47 | 5.44 |
| 77-517-900 | 0.020" | 165 | 25 | 470 | 3.18 | 7.00 |
| 77-517-910 | 0.025 | 165 | 25 | 470 | 3.94 | 8.69 |
| 77-517-915 | 0.031 | 165 | 25 | 470 | 4.82 | 10.63 |

Precision Brand Brass Shim Stock


Page 6 of 12

Traceable Material Report

To obtain a Material Report covering the Shim you have purchased, please supply the following information marked on the shim and box to Precision Brand by email to mpotyrala@pbrand.com with the following information.

Example:

| Material | Thickness | Width | Lot Number Marked on the shim | UPC Number |
|----------|-----------|-------|----------------------------------|------------|
| Brass | 0.002" | 6" | 3567101 | 17195 |

**PRECISION
BRAND**
ISO 9001:2000 Certified Company

PRECISION BRAND PRODUCTS, INC.
2250 CURTISS STREET
DOWNERS GROVE, IL 60515 USA
PHONE: (630) 969-7200 FAX: (630) 969-7275

12 January, 2009

.002" x 6" 260 Half Hard Brass

Chemical Analysis

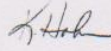
| | |
|-------------|--------|
| Copper (Cu) | 69.317 |
| Zinc (Z) | 30.6 |
| Lead (Pb) | <.001 |
| Iron (Fe) | .016 |

Physical Properties

| | |
|-------------------|--|
| Rockwell | 15T-90 |
| Tensile p.s.i. | 66,000-67,000 |
| Yield p.s.i. | 41,000-43,000 |
| Elongation | 28% / 36% |
| Specification(s) | SAE-CA 260 CDA 260 ASTM B19, B36 |
| Heat No. | 171334 |
| Coil No. | 46722 |
| Branded™ Shim No. | 35671-xx |

We hereby certify that the above information conforms to the mill certificates provided by our suppliers for the material imprinted with the "Branded™ Shim" number listed above.

Sincerely Yours,
Precision Brand Products, Inc.


Digitally signed by K. Hahn
DN: cn=K. Hahn, email=K.Hahn@precisionbrand.com, c=US
email=k.hahn@precisionbrand.com
Date: 2009.01.12 15:04:11 -0500

Representative
K. Hahn

Material Safety Data Sheet

**MATERIAL SAFETY DATA SHEET**

Revision Date: 1/1/09

1. PRODUCT AND COMPANY IDENTIFICATION

Product Name: BRASS SHIM & BRASS THICKNESS GAGE
Product Codes: 17 & 76
Chemical Name: Metal Alloy
Synonyms: Copper-Zinc Alloys, UNS/CDA Alloy Nos. C20000 - C29999
Chemical Family: Copper-Zinc
Formula: Not applicable - mixture
Product Use: Metallurgical Products

COMPANY ADDRESS

Precision Brand Products Inc.
2250 Curtiss Street
Downers Grove IL 60515 USA
www.precisionbrand.com

TECHNICAL

INFORMATION:
630-969-7200

EMERGENCY PHONE NUMBER CHEMTREC:

1-800-424-9300 USA & Canada
202-483-7616 International

2. COMPOSITION/INFORMATION ON INGREDIENTS

| CAS Number | Components | % by Weight | EINECS/ELINCS # | EU Classification | |
|------------|------------|-------------|-----------------|-------------------|----------|
| | | | | Symbol | R-Phrase |
| 7440-50-8 | Copper | 59 - 96 | 231-159-6 | None | None |
| 7440-66-6 | Zinc | 4 - 41 | 231-096-4 | None | None |
| 7439-92-1 | Lead | 0.03 - 0.3 | 231-104-6 | None | None |

OSHA REGULATORY STATUS: In solid form, not hazardous. Dust or fume: carcinogen, irritant, lung, blood, kidney, reproductive and developmental toxin, neurotoxin

In solid form, this material is not hazardous. Dust and fumes are hazardous materials.

3. HAZARDS IDENTIFICATION**WARNING!**

EXPOSURE TO DUST OR FUMES CAN CAUSE EYE, SKIN AND RESPIRATORY TRACT IRRITATION. CONTAINS A MATERIAL WHICH MAY CAUSE BLOOD, KIDNEY, REPRODUCTIVE AND NEUROLOGICAL EFFECTS. CONTAINS A MATERIAL WHICH MAY CAUSE CANCER. USE ONLY WITH ADEQUATE VENTILATION. AVOID CONTACT WITH EYES, SKIN AND CLOTHING. WASH THOROUGHLY AFTER HANDLING.

HAZARD RATINGS (for dust or fume)

Hazardous Materials Identification
System (HMIS)

National Fire Protection Association
(NFPA)

Degree of hazard (0 = low, 4 = extreme)

Health:2* Flammability:0 Physical Hazard: None

Mixture. Not rated

Precision Brand Brass Shim Stock

Page 8 of 12

Material Safety Data Sheet

Precision Brand Products Inc.

MSDS: Brass Shim & Brass Thickness Gage, Product Codes 17 & 76

HUMAN THRESHOLD RESPONSE DATA

| | |
|---|--|
| <u>Odor Threshold:</u> | Unknown |
| <u>Irritation Threshold:</u> | Unknown |
| <u>Immediately Dangerous to Life or Health (IDLH) :</u> | The IDLH for this product is not known. The IDLH for copper and lead is 100mg/m ³ . |

POTENTIAL HEALTH EFFECTS

ACUTE EFFECTS

| | |
|-------------------------|--|
| <u>Eye:</u> | Dust or fume can cause irritation consisting of redness, swelling, and pain. May cause conjunctivitis with repeated exposures. |
| <u>Skin:</u> | Material not expected to be absorbed through the skin. Contact with dust may cause mild irritation consisting of redness and/or swelling. |
| <u>Inhalation:</u> | Harmful if inhaled. Inhalation of high concentrations of powder, dust, or fume may cause severe respiratory and nasal irritation, coughing, and difficulty breathing. Inhalation of high concentrations of metallic copper dusts or fumes may cause nasal irritation and/or nausea, vomiting and stomach pain. The metal fume may also produce influenza-like symptoms, known as metal fume fever. Symptoms of this reaction may include metallic taste, runny nose, nausea, fever and chills. These effects usually disappear within 24 hours, but may be delayed in onset. |
| <u>Ingestion:</u> | Ingestion of large amounts of dust may cause nausea, diarrhea and or stomach pain. |
| <u>CHRONIC EFFECTS:</u> | Prolonged or repeated skin contact with dust may cause more severe irritation or dermatitis. Prolonged or repeated inhalation of dust or fume may cause more severe irritation. Chronic exposure to lead can cause kidney damage, anemia, reproductive effects, developmental effects and permanent nervous system damage in humans including changes in cognitive function. |

MEDICAL CONDITIONS AGGRAVATED BY EXPOSURE: Exposure to dust or fume may aggravate an existing dermatitis, blood condition, asthma, emphysema, or other respiratory disease.

POTENTIAL ENVIRONMENTAL EFFECTS: None known. Product has not been tested for environmental properties.

4. FIRST AID MEASURES

| | |
|----------------------------|--|
| <u>EYE CONTACT:</u> | Immediately flush out fume and dust particles with large amounts of water for at least 15 minutes, occasionally lifting the upper and lower eyelids. If eye irritation develops, call a physician at once. |
| <u>SKIN CONTACT:</u> | If exposed to dust or fumes, wash skin with plenty of water. Remove contaminated clothing and shoes and launder before reuse. If skin irritation or rash develops and persists or recurs, get medical attention. |
| <u>INHALATION:</u> | If symptoms of lung irritation occur (coughing, wheezing or breathing difficulty), remove from exposure area to fresh air immediately. If breathing has stopped, perform artificial respiration. Keep affected person warm and at rest. Get medical attention. |
| <u>INGESTION:</u> | Not a likely route of exposure for finished metal alloy. If dust is ingested, immediately drink water to dilute. Consult a physician if symptoms develop. |
| <u>NOTE TO PHYSICIANS:</u> | There is no specific antidote to the active ingredients in this product; use symptomatic treatment. |

Material Safety Data Sheet

Precision Brand Products Inc.

MSDS: Brass Shim & Brass Thickness Gage, Product Codes 17 & 76

5. FIRE FIGHTING MEASURES

| PROPERTY | VALUE | PROPERTY | VALUE |
|------------------------|----------------|--|----------------|
| Explosive: | No | Flammable | No |
| Combustible: | No | Pyrophoric | No |
| Flash Point (°C): | Not applicable | Burning Rate of Material: | Not applicable |
| Lower Explosive Limit: | Not applicable | Autoignition Temp.: | Not applicable |
| Upper Explosive Limit: | Not applicable | Flammability Classification:(defined by 29CFR 1910.1200) | Not applicable |

UNUSUAL FIRE AND EXPLOSION HAZARDS:

Dust may cause an ignitable and/or an explosive atmosphere.

EXTINGUISHING MEDIA:

For localized powder fires, smother with dry sand, dry dolomite, sodium chloride or soda ash. Use fire-extinguishing media appropriate to fight surrounding fire.

SPECIAL FIREFIGHTING PROCEDURES:

None required.

6. ACCIDENTAL RELEASE MEASURES

FOR ALL TRANSPORTATION ACCIDENTS, CALL CHEMTREC AT 800-424-9300. In dust form, this product may be an explosion hazard. Remove all sources of ignition. Dust or fume may be suppressed by the use of a local exhaust system. Dispose of per guidelines under Section 13, WASTE DISPOSAL.

7. HANDLING AND STORAGE

HANDLING:

Avoid dispersion of dust in air.

STORAGE:

No special requirements.

Shelf Life Limitations:

None known.

Incompatible Materials for Packaging:

None known.

Incompatible Materials for Storage or Transport:

None known.

OTHER PRECAUTIONS:

Do not shake clothing, rags or other items to remove dust. Dust should be removed by washing or HEPA vacuuming.

8. EXPOSURE CONTROLS/PERSONAL PROTECTION

| CAS # | CHEMICAL NAME | ACGIH TLV | OSHA PEL | INTERNATIONAL OELS |
|-----------|---------------|---|---|--|
| 7440-50-8 | Copper | 0.2 mg/m ³ (fume), 1mg/m ³ (dusts and mists) | 0.1mg/m ³ (fume) 1mg/m ³ (dusts and mists) | Austria, Belgium, Canada: 0.2 mg/m ³ (fumes), 1 mg/m ³ (dusts) Denmark: 1.0 mg/m ³ (dust and powder) Germany (MAK): 0.1 mg/m ³ (fume), 1 mg/m ³ (dusts and mists) |
| 7440-66-6 | Zinc | None established | None established | None established |
| 7439-92-1 | Lead | 0.05 mg/m ³ | 0.05 mg/m ³ | Austria, Denmark, Germany, Sweden, Switzerland: 0.1 mg/m ³ Norway, Poland: 0.05 mg/m ³ |

If this product is heated and fumes are generated, zinc oxide fumes could be formed. The ACGIH TLV and OSHA PEL for zinc oxide fume is 5 mg/m³.

Precision Brand Brass Shim Stock

Material Safety Data Sheet

Precision Brand Products Inc.

MSDS: Brass Shim & Brass Thickness Gage, Product Codes 17 & 76

ENGINEERING CONTROLS: Local exhaust ventilation is recommended if significant dusting occurs or fumes are generated. Otherwise, use general exhaust ventilation.

EYE / FACE PROTECTION: Use safety glasses.

SKIN PROTECTION: Wear impervious (cut-resistant) gloves and other protective clothing (aprons, coveralls) as appropriate to prevent skin contact when using this product. If generating a dust, wash thoroughly after handling, especially before eating, drinking, or smoking.

RESPIRATORY PROTECTION: Respiratory protection not normally needed. If dusting occurs or fumes are generated above the PEL/TLV, use a NIOSH-approved half-face or full-face respirator equipped with High Efficiency Particulate (HEPA) filter cartridges.

GENERAL HYGIENE CONSIDERATIONS: Do not eat, drink, or smoke while using this product in dust form.

9. PHYSICAL AND CHEMICAL PROPERTIES

| PROPERTY | VALUE | PROPERTY | VALUE |
|-------------------------------|--------------------------|--------------------------------------|--|
| Appearance: | Red/gold metallic | Vapor Density (air - 1): | Not applicable |
| Odor: | None | Boiling Point (°F): | No data |
| Molecular Weight: | Not applicable - Mixture | Melting point: | L:930 - 1065°C (1710-1950°F) S:905-1050°C (1650-1920°F) |
| Physical State: | Solid | Specific gravity (g/cc): | 8.66 |
| pH: | Not applicable | Bulk Density: | 8.66g/cc |
| Vapor Pressure (mm Hg): | Not applicable | Viscosity (cps): | Not applicable |
| Vapor Density: | Not applicable | Decomposition Temperature: | Not applicable |
| Solubility in Water (20°C): | Negligible | Evaporation Rate: | Not applicable |
| Volatiles, Percent by volume: | Not applicable | Octanol/water partition coefficient: | Unknown |

10. STABILITY AND REACTIVITY

STABILITY: Stable under normal temperatures and pressure.

CONDITIONS TO AVOID: Not affected by mechanical impact or shock or by electrical discharge.

MATERIALS TO AVOID: Acetylene, chlorine

HAZARDOUS DECOMPOSITION PRODUCTS: When heated to decomposition, may produce metal oxides and fumes. Inhalation of high concentrations of metal fumes may cause a condition known as "metal fume fever" which is characterized by flu-like symptoms.

HAZARDOUS POLYMERIZATION: Will not occur.

11. TOXICOLOGICAL INFORMATION

POTENTIAL EXPOSURE ROUTES: For dust: ingestion, inhalation, and eye contact. For fume: inhalation and eye contact. The finished alloy metal is not hazardous.

ACUTE ANIMAL TOXICITY DATA:

| For Product: (dust or fume): | | For Components | | |
|------------------------------|--|------------------------------------|----------------|--------------|
| | | Copper | Lead | Zinc |
| Oral LD ₅₀ | Believed to be moderately toxic | 3.5 mg/kg (mouse, intraperitoneal) | No data | No data |
| Dermal LD ₅₀ | Believed to be >2g/kg | 375 mg/kg (rabbit, subcutaneous) | No data | No data |
| Inhalation LC ₅₀ | Believed to be slightly to moderately toxic | No data | No data | No data |
| Irritation | Believed to be an eye and respiratory irritant | Respiratory irritant | Not irritating | Eye irritant |

Precision Brand Brass Shim Stock

ag11 of 12

Material Safety Data Sheet

Precision Brand Products Inc.

MSDS: Brass Shim & Brass Thickness Gage, Product Codes 17 & 76

SUBCHRONIC / CHRONIC TOXICITY: No information for product. Lead has caused blood, kidney and nervous system damage in laboratory animals.

CARCINOGENICITY: This product is not known or reported to be carcinogenic. The International Agency for Research on Cancer (IARC) lists lead as possibly carcinogenic to humans, group 2B.

MUTAGENICITY: This product is not known or reported to be mutagenic. Lead has been shown to be mutagenic in several *in vitro* assays.

REPRODUCTIVE, TERATOGENICITY, OR DEVELOPMENTAL EFFECTS: This product is not known or reported to cause reproductive or developmental effects. Lead has been shown to affect fetal development including birth defects and reduce male function in laboratory animals.

NEUROLOGICAL EFFECTS: This product is not known or reported to cause neurological effects. Lead has caused peripheral and central nervous system damage and behavioral effects in laboratory animals.

INTERACTIONS WITH OTHER CHEMICALS WHICH ENHANCE TOXICITY: None known or reported.

12. ECOLOGICAL INFORMATION

ECOTOXICITY: No data is available on this product. Individual constituents are as follows:

Copper: The toxicity of copper to aquatic organisms varies significantly not only with the species, but also with the physical and chemical characteristics of the water, such as its temperature, hardness, turbidity and carbon dioxide content. Copper concentrations varying from 0.1 to 1.0 mg/l have been found by various investigators to be not toxic for most fish. However, concentrations of 0.015 to 3.0 mg/l have been reported as toxic, particularly in soft water to many kinds of fish, crustaceans, mollusks, insects, and plankton.

Lead: LC₅₀ (48 hrs.) to bluegill (*Lepomis macrochirus*) is reported to be 2-5 mg/l. Lead is toxic to waterfowl.

MOBILITY: Dissolved lead may migrate through soil.

PERSISTENCE/DEGRADABILITY: Lead may persist and accumulate in the environment.

BIOACCUMULATION: No data

13. DISPOSAL CONSIDERATIONS

If this product becomes a waste, it DOES NOT meet the criteria of a hazardous waste as defined under 40 CFR 261, in that it does not exhibit the characteristics of hazardous waste of Subpart C, nor is it listed as a hazardous waste under Subpart D. Care must be taken to prevent environmental contamination from the use of this material. The user of this material has the responsibility to dispose of unused material, residues and containers in compliance with all relevant local, state and federal laws and regulations regarding treatment, storage and disposal for hazardous and non-hazardous wastes. This product may be a candidate for metal reclamation.

14. TRANSPORT INFORMATION

| | U.S. DOT | RID/ADR | IMDG | IATA | IMO | Canada TDG |
|-----------------------|---------------|---------|------|------|-----|------------|
| PROPER SHIPPING NAME: | Not regulated | | | | | |
| HAZARD CLASS: | | | | | | |
| UN NO.: | | | | | | |
| PACKING GROUP: | | | | | | |
| LABEL: | | | | | | |
| REPORTABLE QUANTITY: | | | | | | |

Precision Brand Brass Shim Stock

Page 12 of 12

Material Safety Data Sheet

Precision Brand Products Inc.

MSDS: Brass Shim & Brass Thickness Gage, Product Codes 17 & 76

15. REGULATORY INFORMATION

US FEDERAL

| | | | | | |
|------------------------|--|--------------------------|----------------------|----------------------------|-------------------------------------|
| TSCA | The components of this product are listed on the Toxic Substance Control Act inventory. | | | | |
| CERCLA: | Zinc, R.Q.=1000 lbs.; Copper, R.Q.= 5000 lbs.; Lead, R.Q.= 10 lbs. No reporting is required if diameter of the pieces of metal is equal to or exceeds 100 micrometers (0.004 inches) | | | | |
| SARA 313: | Copper, Zinc (fume or dust), Lead | | | | |
| SARA 313 Hazard Class: | <u>Health:</u> For dust or fume only | Acute-Yes Chronic-Yes | <u>Fire:</u> None | <u>Reactivity:</u> None | <u>Release of Pressure:</u> None |
| SARA 302 EHS List: | None of the components of this product are listed. | | | | |

*RQ - Reportable Quantity

STATE RIGHT-TO-KNOW STATUS

| Component | *CA Prop. 65 | New Jersey | Pennsylvania | Massachusetts | Michigan |
|-----------|--------------|------------|--------------|---------------|----------|
| Copper | Not listed | X | X | X | X |
| Zinc | Not listed | X | Not listed | X | X |
| Lead | X | X | X | X | X |

*"WARNING: This product contains detectable amounts of a chemical(s) known to the State of California to cause cancer and/or birth defects or other reproductive harm."

EUROPEAN REGULATIONS

Because this material may contain lead at > 0.2%, this material is classified as **Xn, Harmful**. However, this material in its massive solid form is not required to be labeled under EC regulations.

German WGK Classification: Unknown

CANADIAN REGULATIONS

DSL LIST: The components of this product are on the DSL or are exempt from reporting under the New Substances Notification Regulations.

IDL: Copper, Lead

WHMIS: This product is considered to be a manufactured article and therefore not subject to WHMIS requirements.

NOTE: The information contained herein is provided in good faith and is believed to be correct as of the date hereof. However, Precision Brand Products, Inc. makes no representation as to the comprehensiveness or accuracy of the information. It is expected that individuals receiving the information will exercise their independent judgment in determining its appropriateness for a particular period. Accordingly, Precision Brand Products, Inc. will not be responsible for damages of any kind resulting from the use of or reliance upon such information. NO REPRESENTATIONS, OR WARRANTIES, EITHER EXPRESSED OR IMPLIED, OF MERCHANTABILITY, FITNESS FOR A PARTICULAR PURPOSE OR ANY OTHER NATURE ARE MADE HEREUNDER TO WHICH THE INFORMATION REFERS. The responsibility to provide a safe workplace remains with the user. The user should consider the health hazards and safety information contained herein as a guide and should take those precautions required in an individual operation to instruct employees and develop work practice procedures for a safe work environment.