

## Autel Introduces The Highest Performance TPMS Tablet Tool

# COMPLETE TPMS & SERVICE TOOL COMBINATION

Industry first combination of complete TPMS and advanced service functions in a 7-inch tablet tool.

**MaxiTPMS TS608**

Complete full service projects faster with TPMS and all systems diagnostics in one mobile tool.

DIAGNOSTICS & PROGRAMMING

**TPMS**  
MX-SENSOR



**NEW**  
MAXI VCI MINI

SMALLER OBDII BLUETOOTH VCI



## THREE TOOLS IN ONE TABLET

COMPLETE TPMS DIAGNOSTICS

### MAXITPMS - TS601



- OBDII Connection To Read & Clear Codes
- Detect & Display TPMS System Faults
- Activate & Relearn All Known Sensors
- Read Sensor ID Info & Battery Power Level
- Sensor Position Relearn Assist Procedure

**4 SENSOR PROGRAM OPTIONS**

- Copy by Activation
- Copy by Manual Input
- Auto Create 1-16 Sensors
- Copy by OBD

ADVANCED SERVICE FEATURES

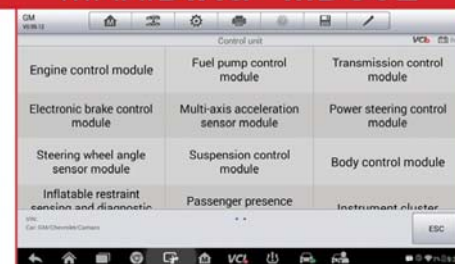
### MAXICHECK PRO



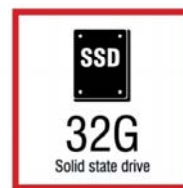
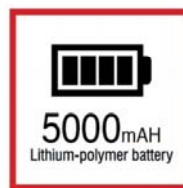
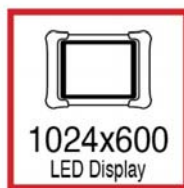
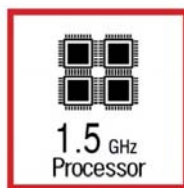
- Read & Clear Codes (Generic & Manufacturer, Pending and Stored)
- Control & Test ABS / SRS / EPB / DPF Groups
- Diesel Particulate Filter Service
- Set Inspection 1 & 2 Service Intervals
- View and Graph Live Freeze Frame Data
- Perform O2 Monitor, On-Board Monitor, I/M Readiness and Component Testing
- Reset Steering Angle Sensors (SAS)

ALL SYSTEMS DIAGNOSTICS

### MAXIDIAG - MD802



- Read & Clear Codes For All Module Systems
- Powertrain, Body, Chassis, Communication
- Supports All 10 OBDII Test Modes - Freeze Frame, Enhanced Mode 6, I/M Readiness, Vehicle Information & Component Tests
- Open & Close EPB Pads For Service
- Diagnose EPB/SBC Caliper Functionality
- Oil & Service Resets / Battery Registration



## HARDWARE SPECIFICATIONS

OPERATING SYSTEM	Android™ 4.4.2 KitKat OS
PROCESSOR	1.5GHz Cortex-A9 Processor
MEMORY	1GB RAM DDR3 / 32GB On-board ROM Memory
DISPLAY	7-inch LED capacitive touch screen with 1024 x 600 resolution
CONNECTIVITY	<ul style="list-style-type: none"> <li>• WiFi (802.11 a/b/g/n)</li> <li>• SD Card (Support up to 32GB)</li> <li>• BT V.2.1 + EDR</li> <li>• USB: 2.0</li> <li>• HDMI</li> </ul>
BATTERY	5000 mAh 3.7 V lithium-polymer battery / 7 hour continuous battery life
POWER	Charging via 5 VDC power supply
AUDIO INPUT/OUTPUT	<ul style="list-style-type: none"> <li>• Microphone</li> <li>• Dual Speakers</li> <li>• 4-Band 3.5 mm stereo/standard headset jack</li> </ul>
SENSORS	Gravity Accelerometer, Ambient Light Sensor (ALS)
INPUT VOLTAGE	5 V (1.5A)
POWER CONSUMPTION	600 mA (LCD on with default brightness, Wi-Fi on) @3.7 V
OPERATING TEMP	-10 to 60°C (14 to 140°F)
STORAGE TEMP	-20 to 70°C (-4 to 158°F)
HOUSING	Strong plastic housing with protective rubber boot
DIMENSIONS	270.8 mm (10") x 176 mm (6.9") x 36 mm (1.4")
NET WEIGHT	885 g (2.31 lb)
PROTOCOLS	ISO9141-2, ISO14230-2, ISO15765, K/L-Line, Flashing Code, SAE-J1850 VPW, SAE-J1850PWM, ISO11898 (Highspeed, Middlespeed, Lowspeed and Singlewire CAN, fault-tolerant CAN), SAE-J2610, GM UART, UART Echo Byte Protocol, Honda Diag-H Protocol, TP2.0, TP1.6

AUTEL.COM UPDATES PROVIDES THE LATEST TPMS COVERAGE AND DIAGNOSTICS

### 1 YEAR WARRANTY / 1 YEAR FREE SOFTWARE UPDATES

REGISTER AND UPDATE TOOLS UPON PURCHASE TO GUARANTEE LATEST VEHICLE COVERAGE



BLUETOOTH VCI CONNECTION



EXTENSIVE VEHICLE COVERAGE



SENSOR ID PROGRAMMING

PART#

DESCRIPTION

TS608 TS608 Head Unit, OBDII Bluetooth VCI, User Manual, Charging Cord, Carry Case, 1-Year Software Updates, 1-Year Warranty