

HAPPY CHRISTMAS NOTE

CUT. COLOUR. FOLD. DELIVER.

1 Print out the template on page 2

2 Cut out the template along the solid black lines

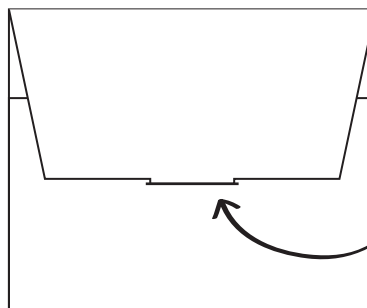
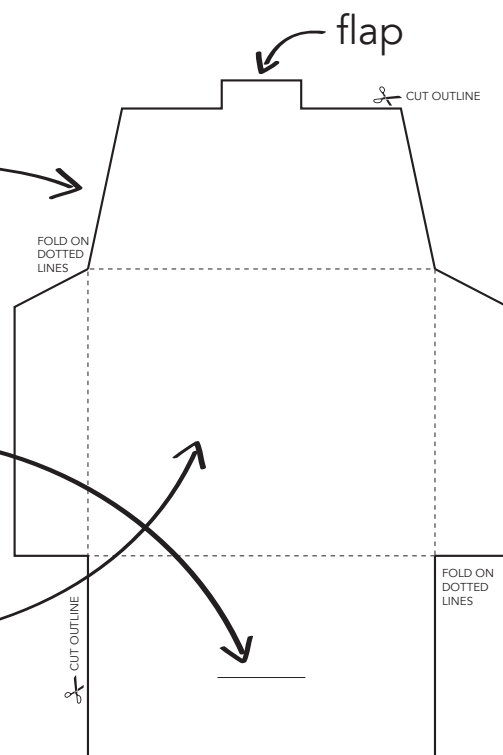
3 Make a slit along the flap insert line

4 Write a special note on the inside of the envelope

5 Decorate the outside of the envelope

6 Create the envelope by folding along the dotted lines

7 Insert the flap and deliver



WRITE YOUR NOTE ON THIS SIDE OF ENVELOPE

 CUT OUTLINE

FOLD ON
DOTTED
LINES

FOLD ON
DOTTED
LINES

 CUT OUTLINE

COLOUR IN THE BACK SIDE OF ENVELOPE