



Jeeo Smart Wi-Fi Plug User Manual

Products



Power Button and Indicator Light Functions

Short press the power button, indicator light on means power on, indicator lights off means power off.

Long press the power button for 5 seconds to reset or clear network settings, flashing indicator means the device is in network discovery mode.

Slow flashing indicator light means poor network connection, please check Wi-Fi router or network configuration.

Technical Parameters

Maximum current: 10A

Rated power: 1250W

Input voltage: AC110-125V

Wireless Type: Wi-Fi 2.4GHz

Operating temperature: 0°C-40°C

Support system: iOS/Android

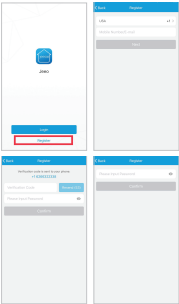
Jeeo App Download

Use your smartphone or mobile device camera to scan the QR code below or search "Jeeo" in application market to download and install the Jeeo Smart Home App.



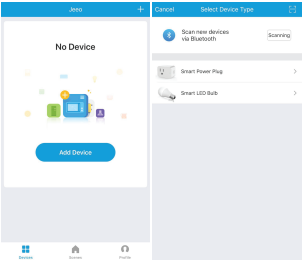
Jeeo Smart Home App Registration

After app installation, open app to register an account with Jeeo by entering location and mobile phone number. Enter verification code sent to mobile phone number via text to register account. Choose and enter password to complete registration.



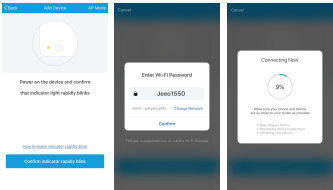
Connect Jeeo Device to App

Confirm your smartphone or mobile device is connected to the same Wi-Fi network. Tap "+" or "Add Device" and choose "Smart Power Plug."



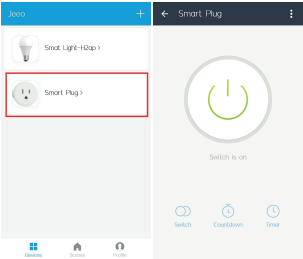
Long press power button for 5 seconds until indicator light flashes. Tap "Confirm indicator rapidly blinks" to connect device.

Enter Wi-Fi password and tap "Confirm" to connect to network.



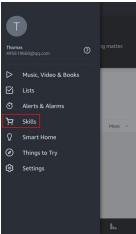
Jeeo Device Configuration

Enter device page to complete configuration. Test connected device using app switch.

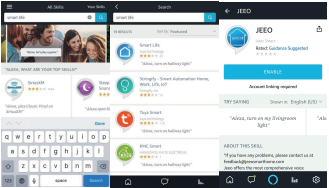


Connecting Jeeo Device to Amazon Alexa

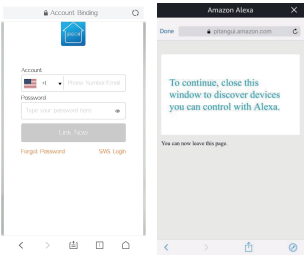
Open Amazon Alexa app, find "Skills" in drop down menu.



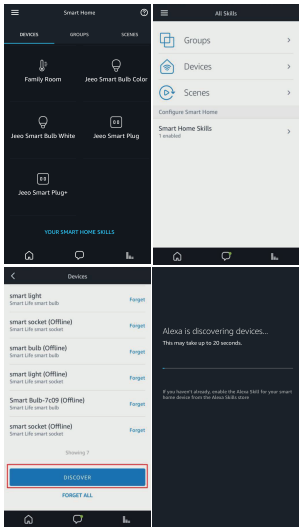
Search for Jeeo Smart Home app and "Enable" in Amazon Alexa app.



Enter your Jeeo account login phone number and password to link Jeeo devices to Amazon Alexa.



Discover Jeeo devices on Amazon Alexa app to complete connection. Go to menu then choose "Smart Home" and "Add Device." Once Jeeo devices are added, you can use Amazon Alex to control via app or voice control.



Notice

Please make sure Jeeo Smart Wi-Fi Plugs are securely plugged into power outlet.

Keep Jeeo Smart Wi-Fi plugs out of reach of children.

Do not disassemble Jeeo Smart Wi-Fi plugs.

Jeeo Smart Wi-Fi plugs are covered by a 1-year limited warranty.

Please visit jeeosmarthome.com/warranty for details or e-mail to warranty@jeeosmarthome.com.



RoHS

