

DRAWING NO.

CV86160JXX

REV

B

REV

DESCRIPTION (ECO)

DATE

APPROVED

A

NEW DRAWING ECN 3074

7/21/04

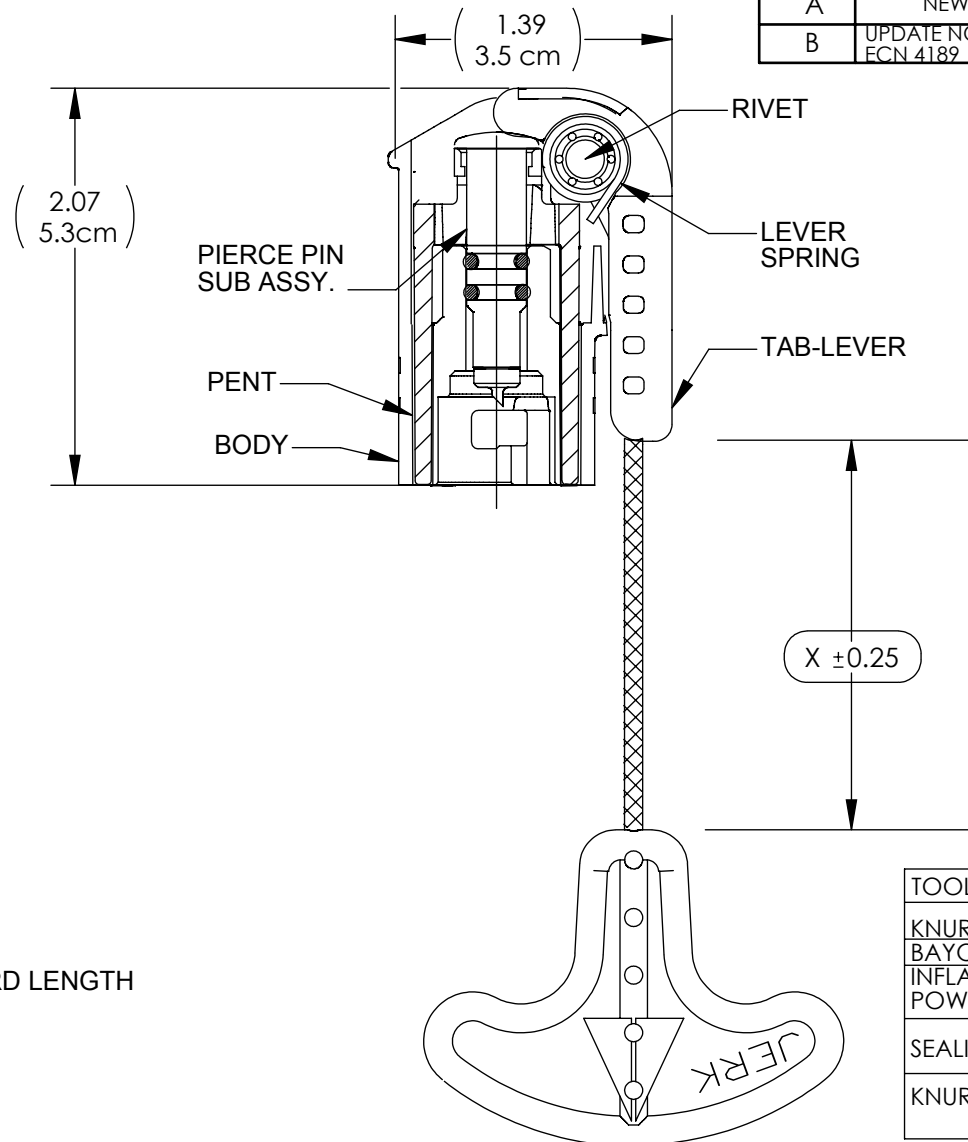
L.F.

B

UPDATE NOTES,ADD METRIC DIM'S  
ECN 4189

9/24/09

AK



## NOTES:

## 1. FIRST SUFFIX INDICATES:

T- TAB ENGLISH

TF - TAB FRENCH - ENGLISH

## 2. SECOND SUFFIX INDICATES CORD LENGTH

SUFFIX	"X" ± 0.25
40	4.0 / (10.2 cm)
60	6.0 / (15.2 cm)

## 3. CRITICAL DIMENSIONS ARE CIRCLED AND SUBJECT TO INSPECTION.

## 4. DIMENSIONS IN PARENTHESES ARE FOR REFERENCE ONLY.

## 5. ALL DIMENSIONS ARE IN INCHES WITH THE NOMINAL DIMENSION IN METRIC BELOW.

TOOLING:	PART NO.	IFU:
KNURL PIN ASSY:	TV86118-1	----
BAYONEY POWERED ASSY:	TV86200	----
INFLATOR ASSY TO MANIFOLD POWERED:	TV86300	----
SEALING DIE:	DV86000	----
KNURL PIN REMOVAL PUNCH:	TV86900R	----

DRAWN BY	DMC	DATE	07/21/04
APPROVED BY		DATE	7/21/04
MATERIAL			
FINISH			
UNLESS OTHERWISE SPECIFIED:	THIRD ANGLE PROJECTION		



Halkey-Roberts

TITLE

BODY W/TAB LEVER

SIZE

A

DRAWING NO.

CV86160JXX

REV

B

SCALE

NTS

DO NOT SCALE DRAWING

SHEET

1 OF 1

GATES, PARTING LINES, AND FLASH PER QUALITY CRITERIA

PROPRIETARY AND CONFIDENTIAL

THE INFORMATION CONTAINED IN THIS DRAWING IS THE SOLE PROPERTY OF HALKEY-ROBERTS CORPORATION, ST. PETERSBURG, FL. ANY REPRODUCTION IN PART OR AS A WHOLE WITHOUT THE WRITTEN PERMISSION OF HALKEY-ROBERTS CORPORATION IS PROHIBITED.