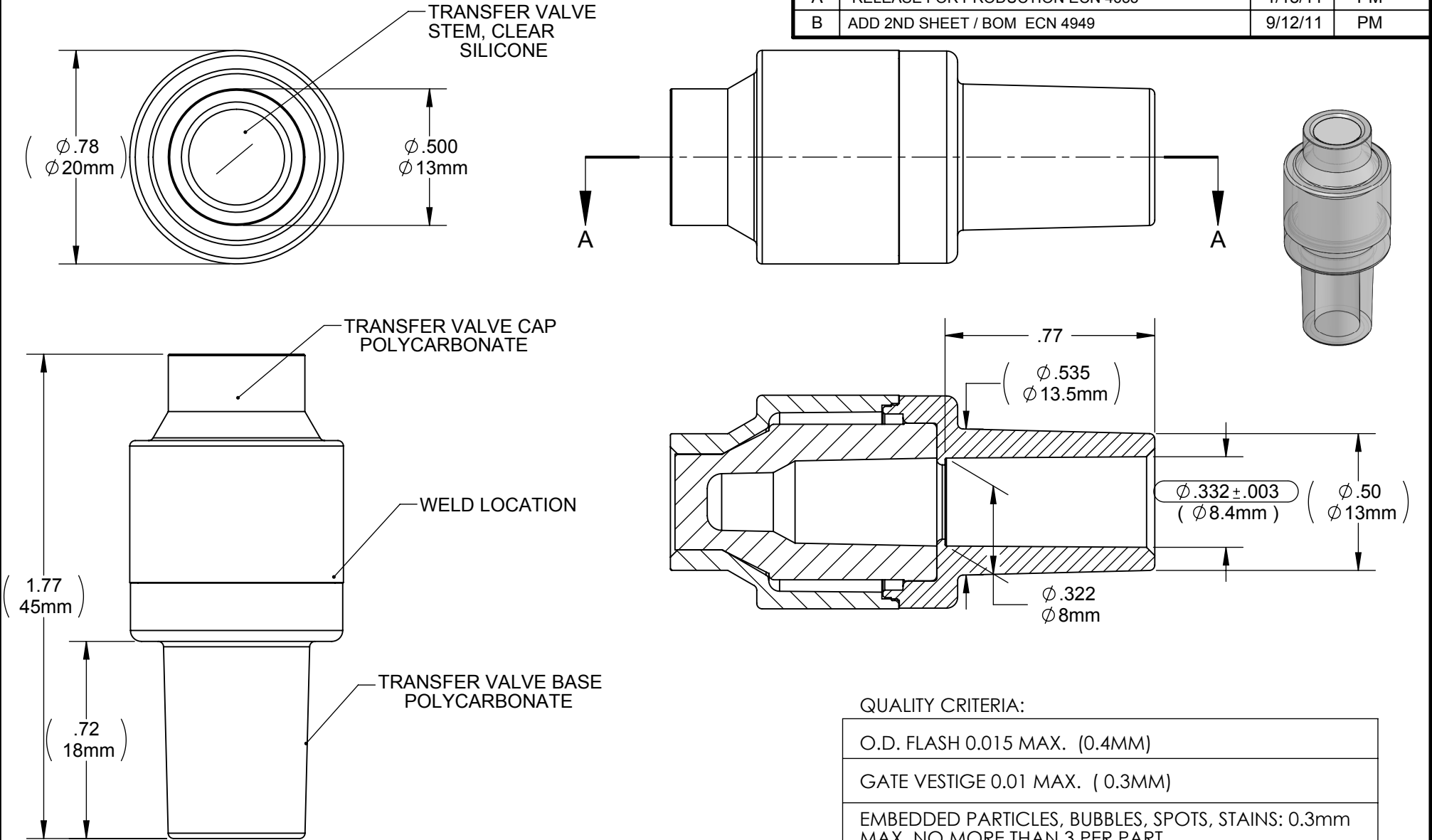


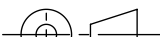
DRAWING NO. <b>C255004024</b>	REV <b>B</b>	<b>Customer Drawing</b>	REVISION HISTORY			
			REV	DESCRIPTION (ECO)	DATE	APPROVED
			A	RELEASE FOR PRODUCTION ECN 4653	1/18/11	PM
			B	ADD 2ND SHEET / BOM ECN 4949	9/12/11	PM



- NOTES:
1. CRITICAL DIMENSIONS ARE CIRCLED AND SUBJECT TO INSPECTION.
  2. DIMENSIONS IN PARENTHESES ARE FOR REFERENCE ONLY.
  3. ALL DIMENSIONS ARE IN INCHES WITH NOMINAL IN METRIC BELOW.

**MOLDED PARTS:**  
GATES, PARTING LINES, AND FLASH PER QUALITY CRITERIA

**PROPRIETARY AND CONFIDENTIAL**  
THE INFORMATION CONTAINED IN THIS DRAWING IS SOLE PROPERTY OF HALKEY-ROBERTS CORPORATION ST. PETERSBURG, FL. ANY REPRODUCTION IN PART OR AS A WHOLE WITHOUT THE WRITTEN PERMISSION OF HALKEY-ROBERTS CORPORATION IS PROHIBITED.

DRAWN BY	DMC	DATE	12/10/09
APPROVED BY		DATE	
MATERIAL	AS NOTED		
FINISH			
UNLESS OTHERWISE SPECIFIED: DIMENSIONS ARE IN INCHES TOLERANCES: ANGULAR: ± 1° TWO PLACE DECIMAL ± .01 THREE PLACE DECIMAL ± .005		THIRD ANGLE PROJECTION	
			

**Halkey-Roberts**

**TRANSFER VALVE**

SIZE	DRAWING NO.	REV
<b>A</b>	<b>C255004024</b>	<b>B</b>
SCALE	DO NOT SCALE DRAWING	
2:1	SHEET 1 OF 2	