

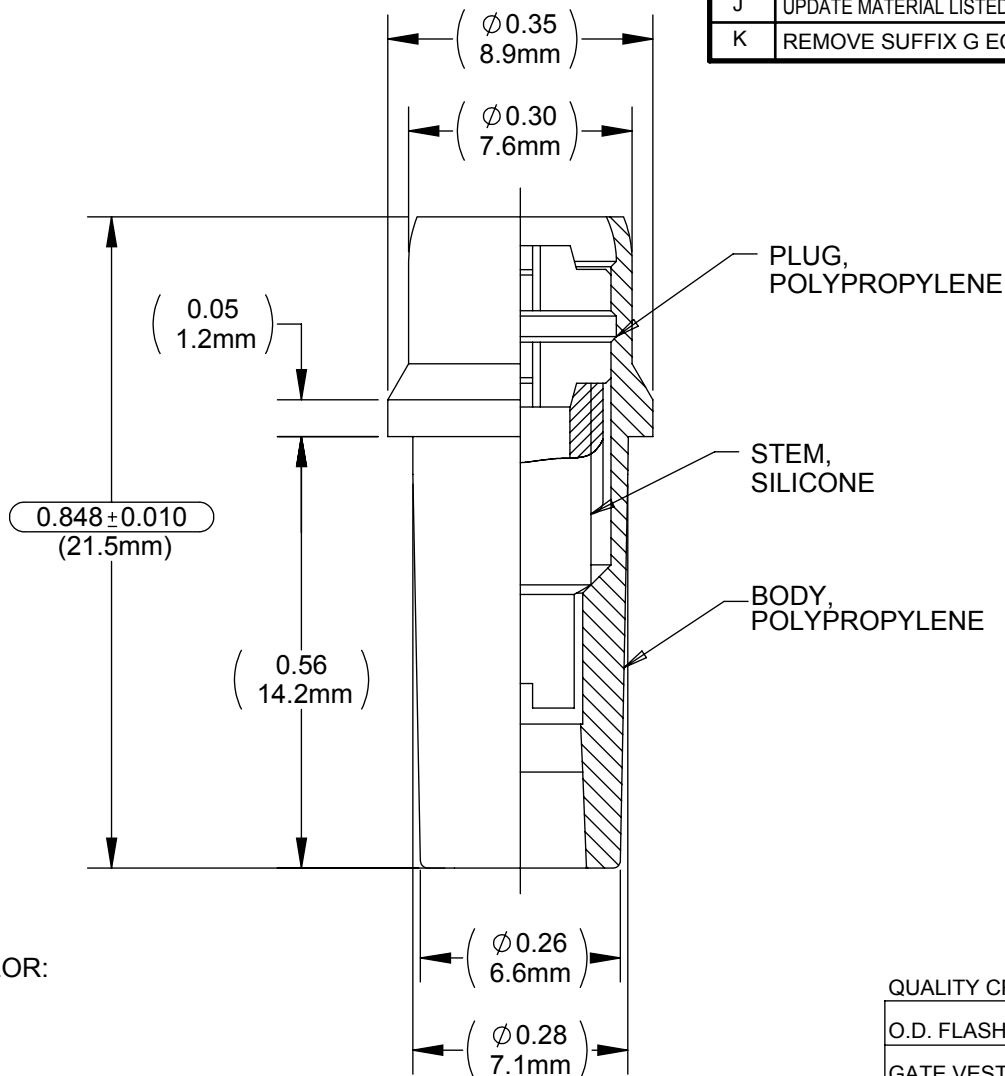
DRAWING NO.  
**CV24200PX**

REV  
**K**

# Customer Drawing

## REVISION HISTORY

REV	DESCRIPTION (ECO)	DATE	APPROVED
J	UPDATE MATERIAL LISTED FOR SUFFIX D SEE SHEET 2. ECO 6148	7/7/14	AK
K	REMOVE SUFFIX G ECO 7316	1/26/17	AK



**NOTES:**

- SUFFIX "X" INDICATES COLOR:  
C - CLEAR  
W - WHITE  
WT - WHITE  
D - GAMMA, WHITE
- CRITICAL DIMENSIONS ARE CIRCLED AND SUBJECT TO INSPECTION.
- DIMENSIONS IN PARENTHESES ARE FOR REFERENCE ONLY.
- ALL DIMENSION ARE IN INCHES WITH NOMINAL DIMENSIONS IN MILLIMETERS BELOW.
- LUER COMPATIBLE WITH ISO594-1

**QUALITY CRITERIA:**

O.D. FLASH: 0.015 MAX (0.4mm)
GATE VESTIGE 0.01 MAX (0.3mm)
EMBEDDED PARTICLES, BUBBLES, SPOTS, STAINS: 0.3MM <sup>2</sup> MAX. NO MORE THAN 3 PER PART.

**MOLDED PARTS:**  
GATES, PARTING LINES, AND FLASH PER QUALITY CRITERIA

**PROPRIETARY AND CONFIDENTIAL**  
THE INFORMATION CONTAINED IN THIS DRAWING IS SOLE PROPERTY OF HALKEY-ROBERTS CORPORATION ST. PETERSBURG, FL. ANY REPRODUCTION IN PART OR AS A WHOLE WITHOUT THE WRITTEN PERMISSION OF HALKEY-ROBERTS CORPORATION IS PROHIBITED.

<b>DRAWN BY</b>	M.S.	<b>DATE</b>	12-09-87
<b>APPROVED BY</b>	J.W.	<b>DATE</b>	
<b>MATERIAL</b>			
<b>FINISH</b>			
<b>UNLESS OTHERWISE SPECIFIED:</b>	<b>THIRD ANGLE PROJECTION</b>		
DIMENSIONS ARE IN INCHES TOLERANCES: ANGULAR: ± 1° TWO PLACE DECIMAL ± .01 THREE PLACE DECIMAL ± .005			

 **Halkey-Roberts**

**TITLE** CATHETER VALVE (16 FLUTES)

<b>SIZE</b>	<b>DRAWING NO.</b>	<b>REV</b>
A	CV24200PX	K
<b>SCALE</b>	<b>DO NOT SCALE DRAWING</b>	<b>SHEET</b>
4:1		1 OF 2