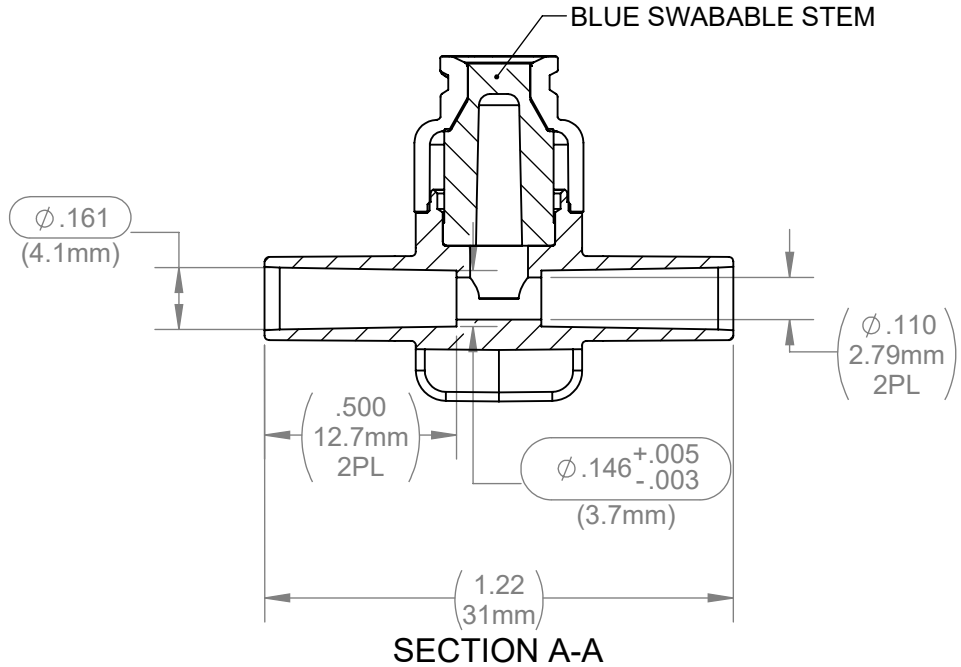
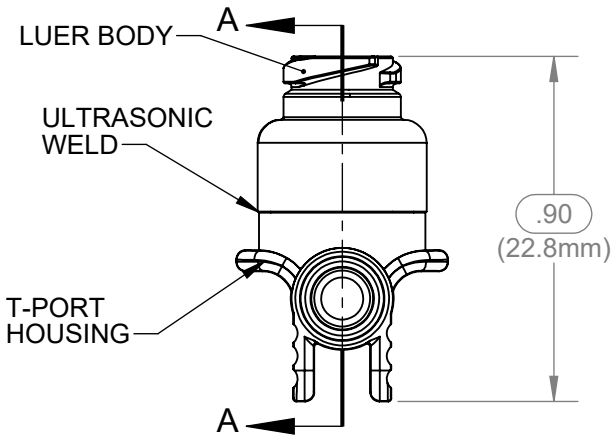


DRAWING NO. C2454540XX	REV D	Customer Drawing	REVISION HISTORY			
			REV	DESCRIPTION (ECO)	DATE	APPROVED
			C	REMOVE FLOW RATE & PRIMING VOLUME NOTES ECO 6445	2/27/15	AK
			D	ADD ISO80369-7 TO NOTES, ECO 8017	04/30/18	AK





- NOTES:
- SUFFIX "XX" INDICATES MATERIAL:
24 - CLEAR POLYCARBONATE
 - CRITICAL DIMENSIONS ARE CIRCLED AND SUBJECT TO INSPECTION.
 - DIMENSIONS IN PARENTHESES ARE FOR REFERENCE ONLY.
 - ALL DIMENSIONS ARE IN INCHES WITH THE NOMINAL DIMENSION IN METRIC BELOW.
 - USAGE: WILL FIT 4.0/4.1 MM (.157"/.161) O.D. TUBING.
 - LUER COMPATIBLE WITH ISO594-2 , AND ISO80369-7.

VALVE SPECIFICATION:

BACK PRESSURE: > 30 PSI, REF. (2.1 BAR). (40 PSI NOMINAL) .
 BIOCOMPATABILITY: PASSES ISO 10993, PART 1.
 MATERIALS: ALL MATERIALS ARE GAMMA RESISTANT, MEET USP CLASS VI;
 DEHP FREE, AND NOT MADE WITH NATURAL RUBBER LATEX.
 POTENTIAL STERILIZATION: ETO; AND GAMMA, BASED ON RAW MATERIAL SPECIFICATIONS.

QUALITY CRITERIA:
O.D. FLASH: 0.015 MAX. (0.4mm)
GATE VESTIGE: 0.01 MAX. (0.3mm)
EMBEDDED PARTICLES, BUBBLES,SPOTS, STAINS: 0.3mm² MAX. NO MORE THAN 3 PER PART.

MOLDED PARTS: GATES, PARTING LINES, AND FLASH PER QUALITY CRITERIA		FINISH		4.0/4.1mm SWABABLE "T" PORT			
PROPRIETARY AND CONFIDENTIAL THE INFORMATION CONTAINED IN THIS DRAWING IS SOLE PROPERTY OF HALKEY-ROBERTS CORPORATION ST. PETERSBURG, FL. ANY REPRODUCTION IN PART OR AS A WHOLE WITHOUT THE WRITTEN PERMISSION OF HALKEY-ROBERTS CORPORATION IS PROHIBITED.		UNLESS OTHERWISE SPECIFIED: DIMENSIONS ARE IN INCHES TOLERANCES: ANGULAR: ± 1° TWO PLACE DECIMAL ± .01 THREE PLACE DECIMAL ± .005					
		THIRD ANGLE PROJECTION 		SIZE	DRAWING NO. C2454540XX		REV
				A	D		
				SCALE	DO NOT SCALE DRAWING		SHEET
				2:1	1 OF 2		

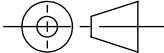
DRAWING NO. C2454540XX	REV D	Customer Drawing	REVISION HISTORY			
			REV	DESCRIPTION (ECO)	DATE	APPROVED
			C	REMOVE FLOW RATE & PRIMING VOLUME NOTES ECO 6445	2/27/15	AK
			D	ADD ISO80369-7 TO NOTES, ECO 8017	04/30/18	AK

BILL OF MATERIAL:

SUFFIX	LUER BODY	T PORT HOUSING	STEM
24	CLEAR POLYCARBONATE MAKROLON RX 1805 451118	CLEAR POLYCARBONATE MAKROLON RX 1805 451118	BLUE SILICONE 40 DUROMETER WACKER LR 3003/40 DT COLOR, K75238

MOLDED PARTS:
GATES, PARTING LINES, AND FLASH PER QUALITY CRITERIA

PROPRIETARY AND CONFIDENTIAL
THE INFORMATION CONTAINED IN THIS DRAWING IS SOLE PROPERTY OF HALKEY-ROBERTS CORPORATION ST. PETERSBURG, FL. ANY REPRODUCTION IN PART OR AS A WHOLE WITHOUT THE WRITTEN PERMISSION OF HALKEY-ROBERTS CORPORATION IS PROHIBITED.

DRAWN BY SJR	DATE 4/2/12	HR® Halkey-Roberts®		
APPROVED BY	DATE			
MATERIAL				
FINISH		TITLE 4.0/4.1mm SWABABLE "T" PORT		
UNLESS OTHERWISE SPECIFIED: DIMENSIONS ARE IN INCHES TOLERANCES: ANGULAR: ± 1° TWO PLACE DECIMAL ± .01 THREE PLACE DECIMAL ± .005		SIZE A	DRAWING NO. C2454540XX	REV D
THIRD ANGLE PROJECTION 		SCALE 2:1	DO NOT SCALE DRAWING	
		SHEET 2 OF 2		