

DRAWING NO.

C840BAMXSEP4

REV

F

## Customer Drawing

## Revision History

REV	DESCRIPTION (ECO)	DATE	APPROVED
E	MOVE DATE AS SHOWN ECN 5090	2/01/12	AK
F	UPDATE NOTE FOR PLATING: ELECTROLESS ZINC, TO ELECTROLESS NICKEL ECO 6087	5/9/14	LF

## SPECIFICATIONS:

CONFORMS TO PERFORMANCE SPECIFICATIONS OF FAA STANDARD TSO-C13f

CYLINDER: 3/8-24 UNF THREAD (840AMS)  
1/2-20 UNF THREAD (840AMLS)

PROOF PRESSURE: HYDROSTATIC - 1500 PSIG  
LEAKAGE - 0 TO 40 PSIG  
0 TO 2 PSIG

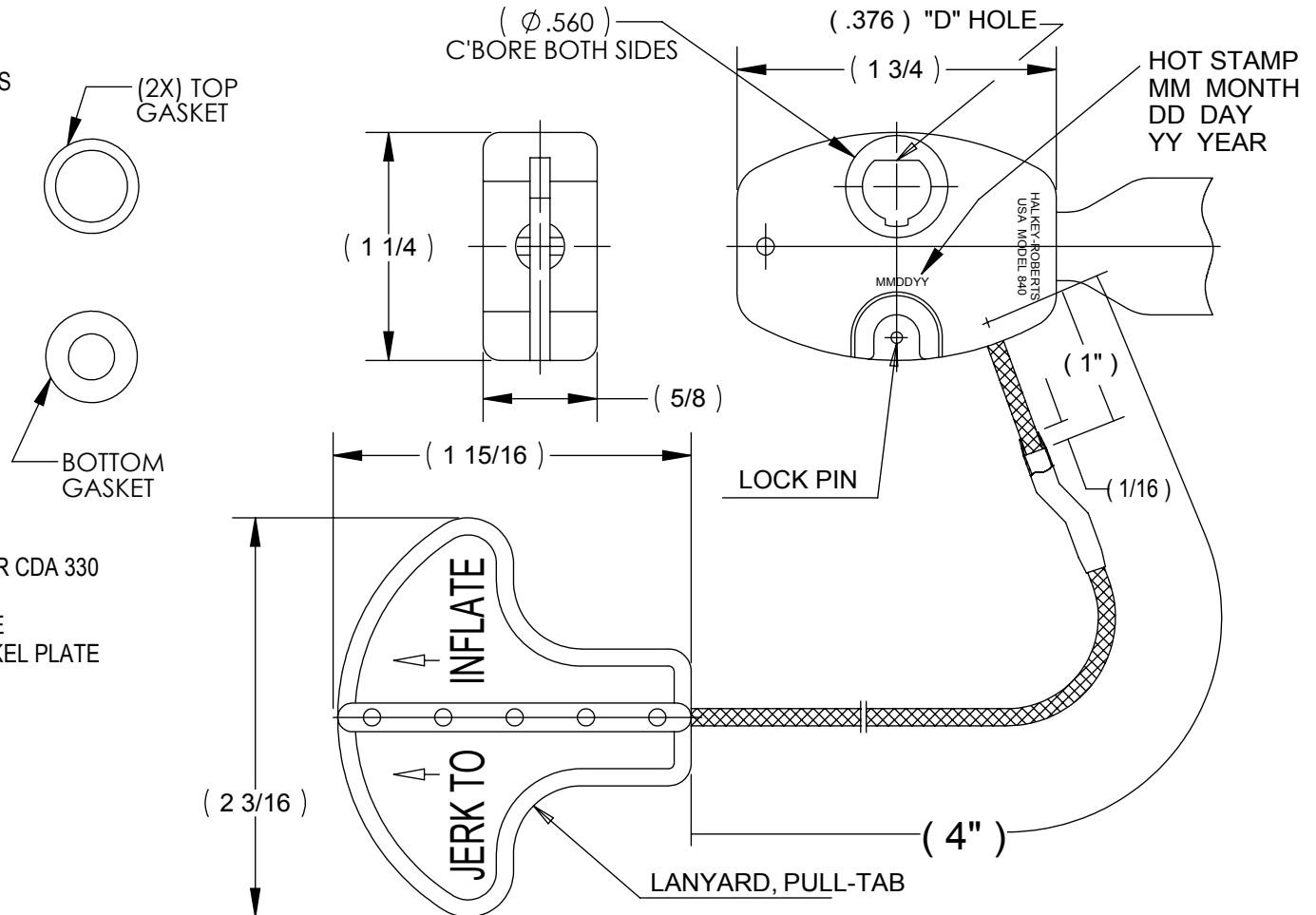
STORAGE TEMP. RANGE: -60°F TO 160°F  
LANYARD EXCEEDS 100 Lb. PULL TEST

## MATERIALS:

BODY: 30% GLASS FILLED POLYESTER  
PIERCE LEVER: ST'L STEEL 304 PASSIVATE  
PIERCE PIN: ST'L STEEL 17-4-PH  
FERRULE: BRASS TUBING COMMERCIAL TEMPER CDA 330 OR CDA 272 1/2 HARD.  
HEAT SHRINKABLE TUBING: POLYOLEFIN, WHITE  
THREADED INSERT: BRASS, ELECTROLESS NICKEL PLATE  
LANYARD: 3/32 DIA. NYLON-DIAMOND BRAID  
O-RING: BUNA N DURO 70 SHORE A  
PULL-TAB: RED ACETAL  
LOCK PIN: RED ACETAL

## NOTES:

- SUFFIX "X" INDICATES:  
NO SUFFIX - 3/8" TH'D  
L - 1/2" TH'D
- FOR BEAUFORD AND LIEFGUARD ONLY.



DRAWN BY	M.S.	DATE	03-04-98
APPROVED BY	J.W.	DATE	03-04-98
MATERIAL			
FINISH			
UNLESS OTHERWISE SPECIFIED:	THIRD ANGLE PROJECTION		
DIMENSIONS ARE IN INCHES			
TOLERANCES:			
ANGULAR: ± 1°			
TWO PLACE DECIMAL ± .01			
THREE PLACE DECIMAL ± .005			

		<b>Halkey-Roberts</b> <b>MANUAL INFLATOR</b> (ST'L STEEL)	
		SIZE <b>A</b>	DRAWING NO. <b>C840BAMXSEP4</b>
SCALE 1:1	DO NOT SCALE DRAWING		SHEET 1 OF 1

MOLDED PARTS:  
GATES, PARTING LINES, AND FLASH PER QUALITY CRITERIA

**PROPRIETARY AND CONFIDENTIAL**

THE INFORMATION CONTAINED IN THIS DRAWING IS THE SOLE PROPERTY OF HALKEY-ROBERTS CORPORATION, ST. PETERSBURG, FL. ANY REPRODUCTION IN PART OR AS A WHOLE WITHOUT THE WRITTEN PERMISSION OF HALKEY-ROBERTS CORPORATION IS PROHIBITED.