

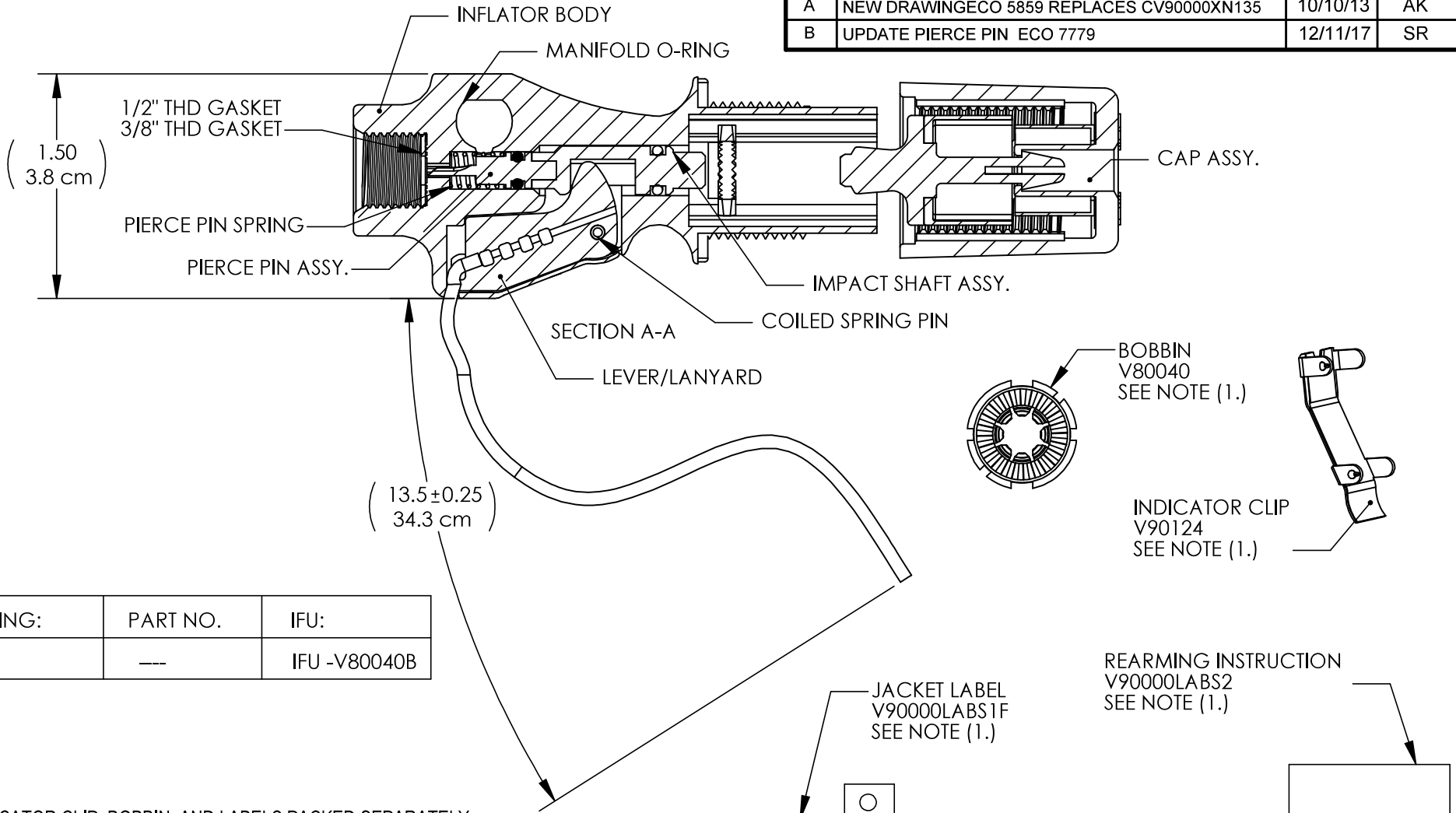
DRAWING NO.
CV90000XN135B

REV
B

Customer Drawing

REVISION HISTORY

REV	DESCRIPTION (ECO)	DATE	APPROVED
A	NEW DRAWING ECO 5859 REPLACES CV90000XN135	10/10/13	AK
B	UPDATE PIERCE PIN ECO 7779	12/11/17	SR



TOOLING:	PART NO.	IFU:
---	---	IFU -V80040B

1. INDICATOR CLIP, BOBBIN, AND LABELS PACKED SEPARATELY.
2. FIRST SUFFIX "X" INDICATES THREAD TYPE:
NONE - 1/2"
S - 3/8"
3. CRITICAL DIMENSIONS ARE CIRCLED AND SUBJECT TO INSPECTION.
4. DIMENSIONS IN PARENTHESES ARE FOR REFERENCE ONLY.
5. ALL DIMENSIONS ARE IN INCHES WITH THE NOMINAL DIMENSION IN METRIC BELOW.

MOLDED PARTS:
GATES, PARTING LINES, AND FLASH PER QUALITY CRITERIA

PROPRIETARY AND CONFIDENTIAL
THE INFORMATION CONTAINED IN THIS DRAWING IS SOLE PROPERTY OF HALKEY-ROBERTS CORPORATION ST. PETERSBURG, FL. ANY REPRODUCTION IN PART OR AS A WHOLE WITHOUT THE WRITTEN PERMISSION OF HALKEY-ROBERTS CORPORATION IS PROHIBITED.

DRAWN BY	DMC	DATE	10/10/13
APPROVED BY		DATE	
MATERIAL			
FINISH			
UNLESS OTHERWISE SPECIFIED:	THIRD ANGLE PROJECTION		
DIMENSIONS ARE IN INCHES			
TOLERANCES:			
ANGULAR: ± 1°			
TWO PLACE DECIMAL ± .01			
THREE PLACE DECIMAL ± .005			

HR® Halkey-Roberts®			
ALPHA INFLATOR			
SIZE	DRAWING NO.	REV	
A	CV90000XN135B	B	
SCALE	DO NOT SCALE DRAWING	SHEET	1 OF 1
1:1			